

*Supplementary Material*

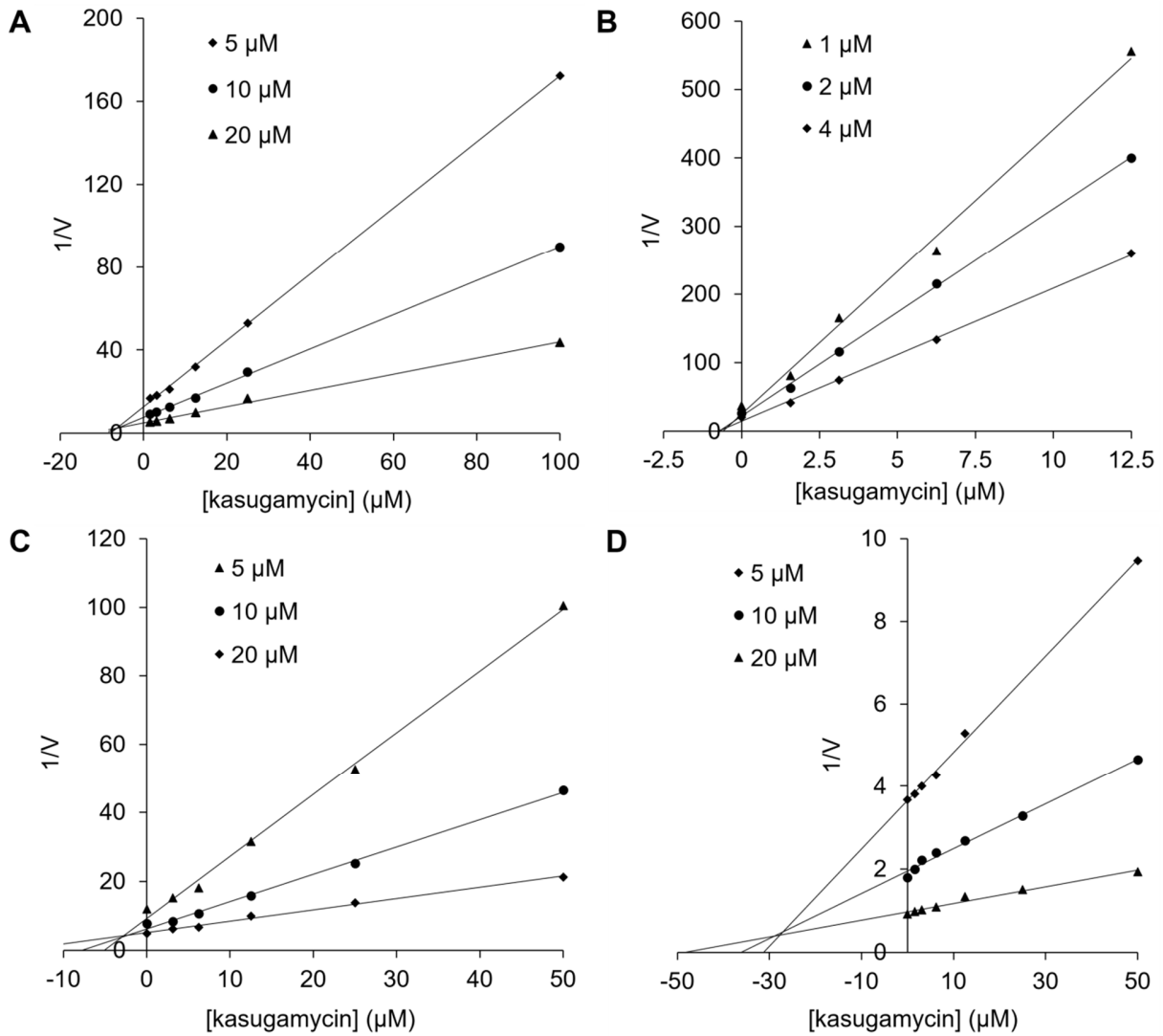


Figure S1. Inhibitory kinetics of kasugamycin against AMCCase (A), *OfChtI* (B), *OfChi-h* (C) and *SmChiA* (D).

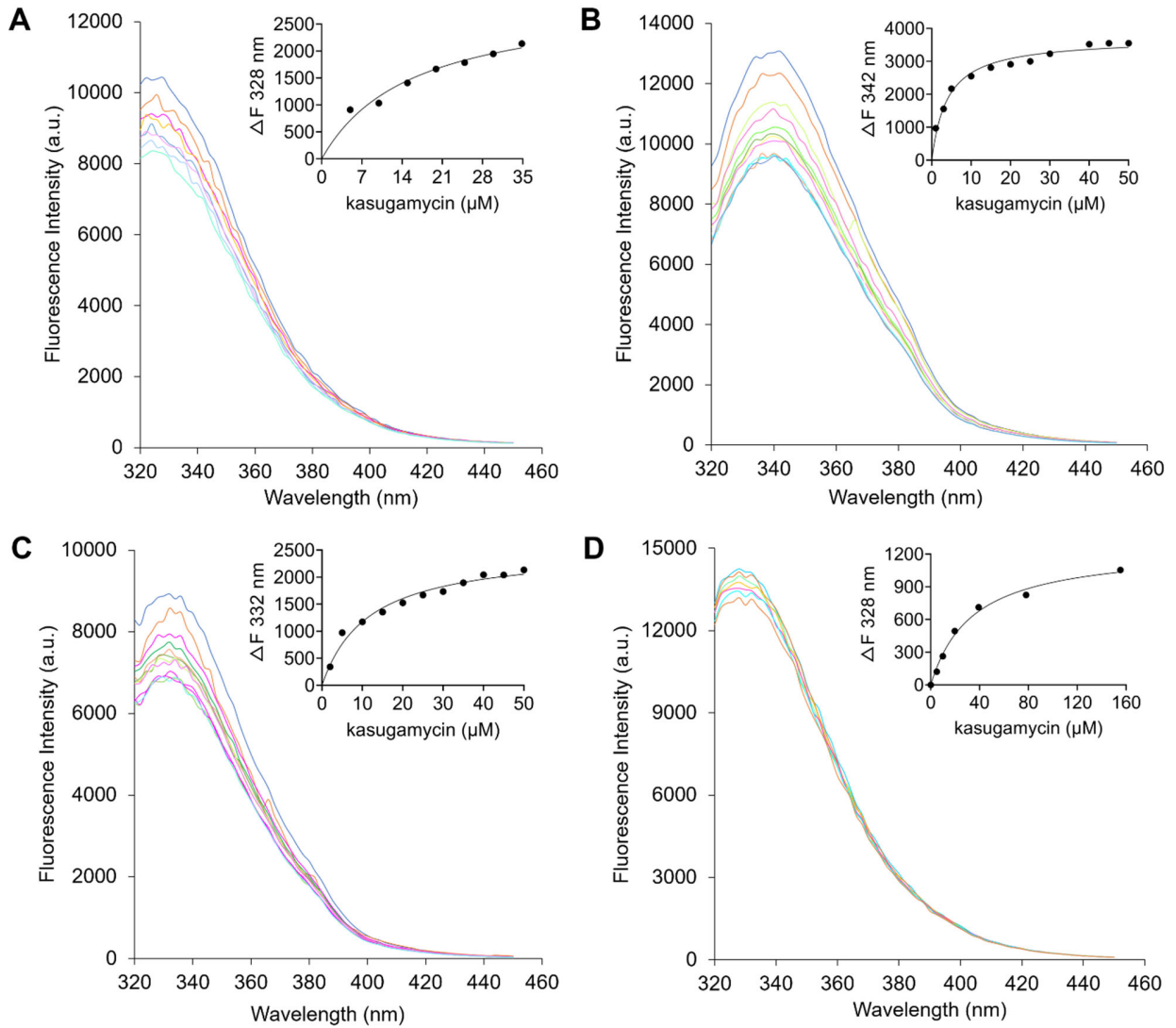


Figure S2. Binding affinities of kasugamycin to AMCase (A), *OfChI* (B), *OfChi-h* (C) and *SmChiA* (D).

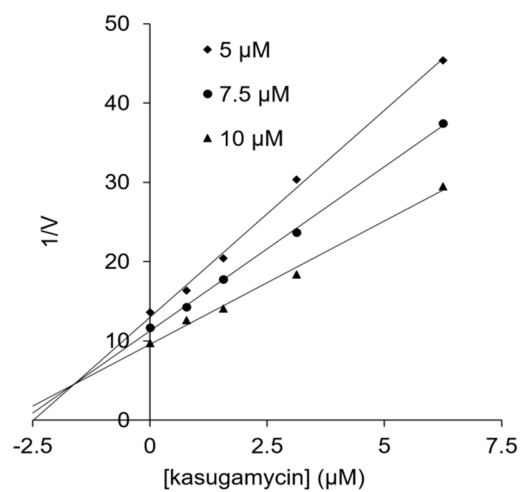


Figure S3. Inhibitory kinetic of kasugamycin against *HsCht* in buffer with 1.0 M NaCl.

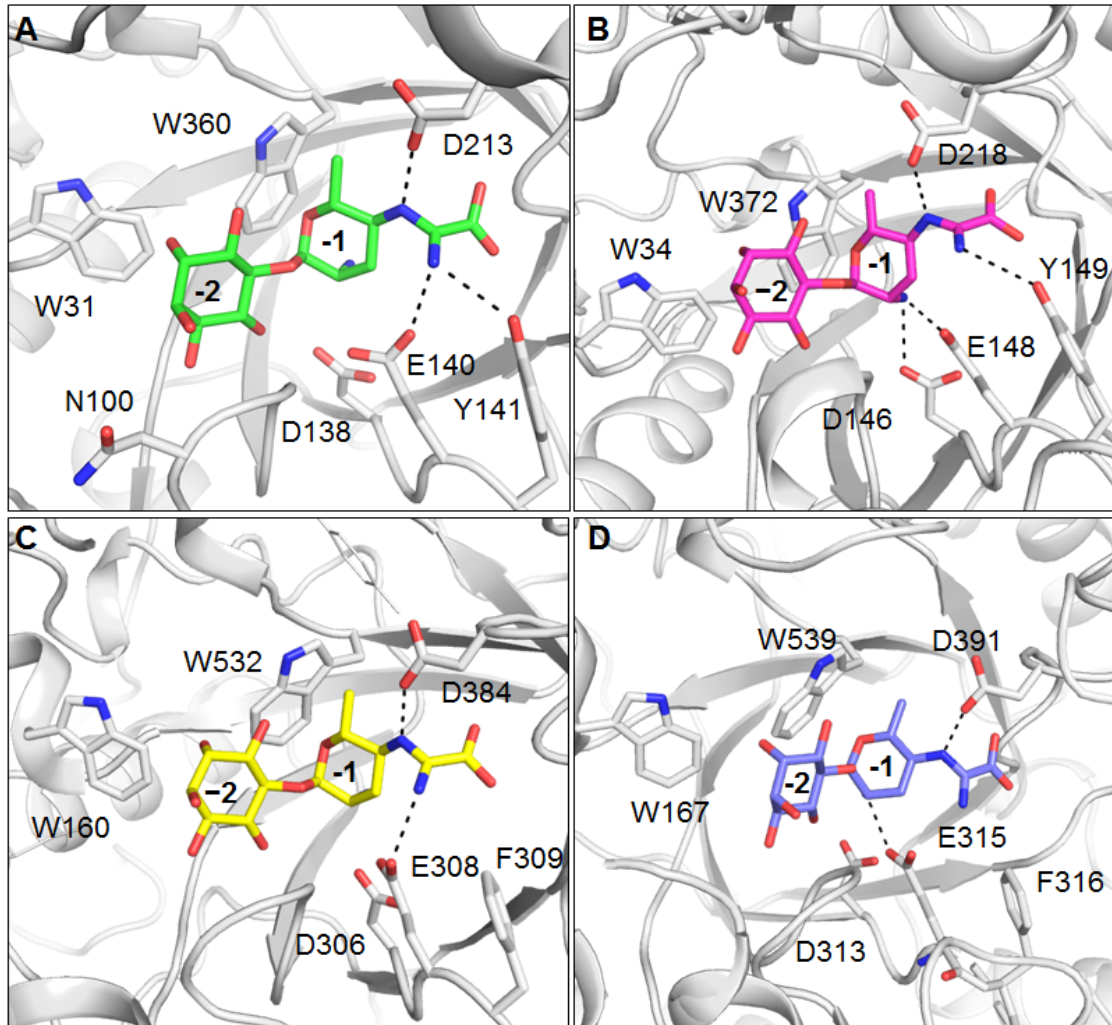


Figure S4. Modeled binding modes of kasugamycin to AMCase (A), *OfChtI* (B), *OfChi-h* (C) and *SmChiA* (D).