

Supporting Material

Activity-dependent conformational transitions of the insulin receptor-related receptor

Oleg V. Batishchev^{1*#}, Natalia V. Kuzmina^{1#}, Andrey A. Mozhaev^{2,3}, Alexander S. Goryashchenko², Ekaterina D. Mileshina², Alexander N. Orsa², Eduard V. Bocharov^{2,4}, Igor E. Deyev², Alexander G. Petrenko²

¹ A.N. Frumkin Institute of Physical Chemistry and Electrochemistry, Russian Academy of Sciences, Moscow, Russia;

² Shemyakin–Ovchinnikov Institute of Bioorganic Chemistry, Russian Academy of Sciences, Moscow, Russia

³ Shubnikov Institute of Crystallography of Federal Scientific Research Centre “Crystallography and Photonics”, Russian Academy of Sciences, Moscow, Russia

⁴ Moscow Institute of Physics and Technology, Dolgoprudniy, Moscow Region, Russia

* Correspondence: olegbati@gmail.com; Tel.: +7-495-955-4585

These authors contributed equally to the work

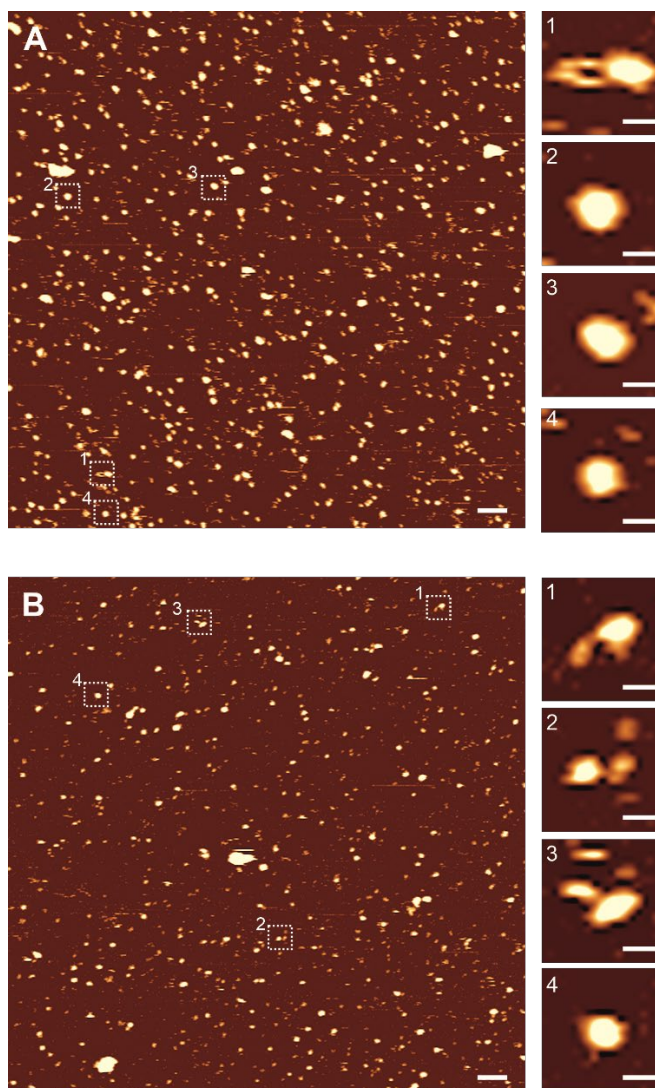


Figure S1. Examples of large-scale AFM images of the full-length IRR in micelles used for selection of typical conformations. **A** – pH 7.0, **B** – pH 9.0. A 2-4 and B 4 represent empty micelles. Scale bars are 100 nm for the main images and 20 nm for zoom-ins. Z-scale is 4 nm.