

Supplementary Figures

Mechanistic and therapeutic distinctions between cardiosphere-derived cell and mesenchymal stem cell extracellular vesicle non-coding RNA

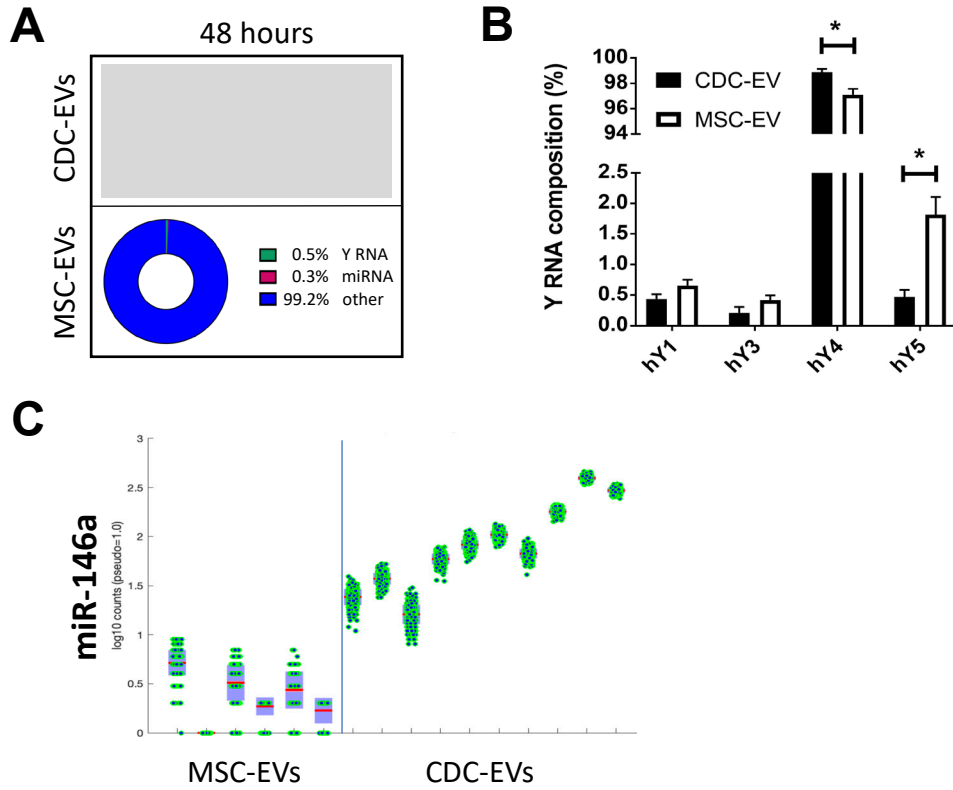
Ann-Sophie Walravens¹, Sasha Smolgovsky¹, Liang Li¹, Lauren Kelly¹, Travis Antes¹, Kiel Peck¹, Tanner Quon¹, Ahmed Ibrahim², Eduardo Marbán², Benjamin Berman³, Linda Marbán^{1*}, Luis R.-Borlado¹, Geoffrey de Couto^{1,2*}

¹ Capricor Therapeutics, Inc., Beverly Hills, CA 90211, USA.

² Smidt Heart Institute, Cedars-Sinai Medical Center, Los Angeles, CA 90048, USA.

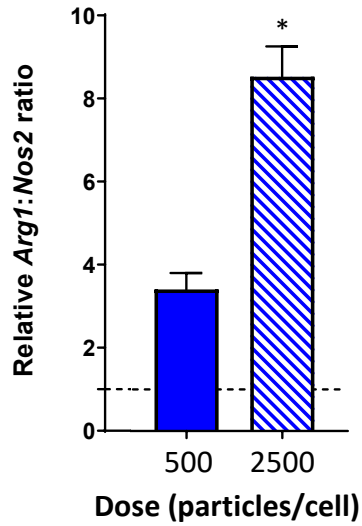
³ Center for Bioinformatics and Functional Genomics, Cedars-Sinai Medical Center, Los Angeles, CA 90048, USA

Supplemental Figure 1



Supplemental Figure 1. ncRNA composition in EVs. **A**, Relative proportion of Y RNA fragments with sequence homology to its parent Y RNA. **B**, Number of miR-146a reads in MSC-EVs and CDC-EVs. * $P < 0.05$.

Supplemental Figure 2



Supplemental Figure 2. Dose-dependent relative gene expression of Arg1 and Nos2 following CDC-EV treatment. Two EV doses were tested: 500 and 2500 particles/cell. Untreated control macrophages are depicted by the dashed line. *P<0.05