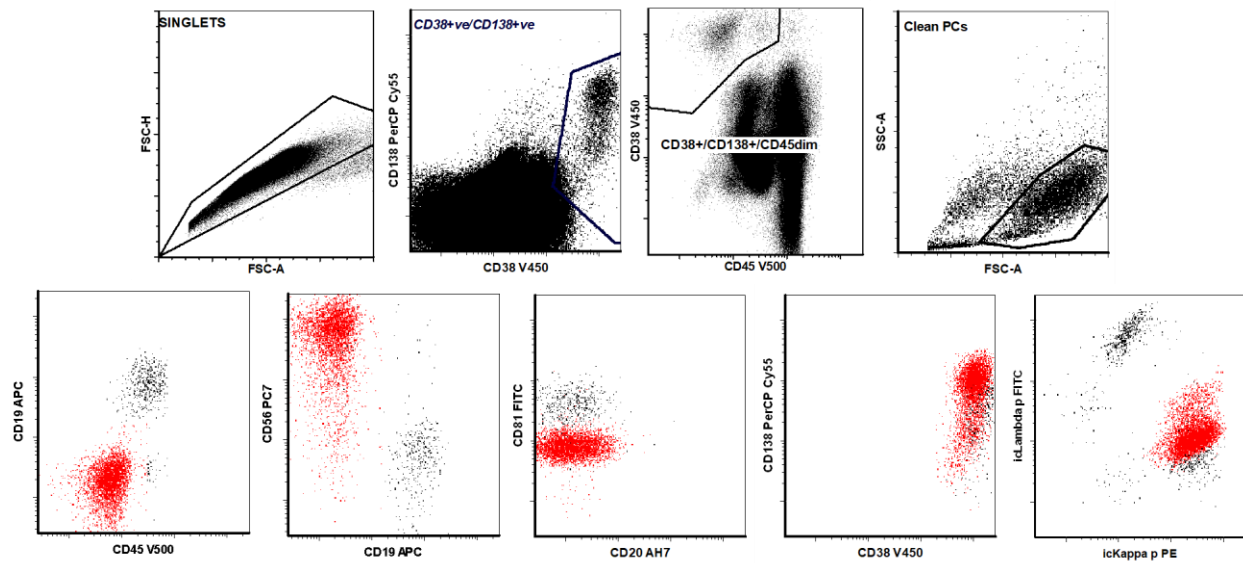
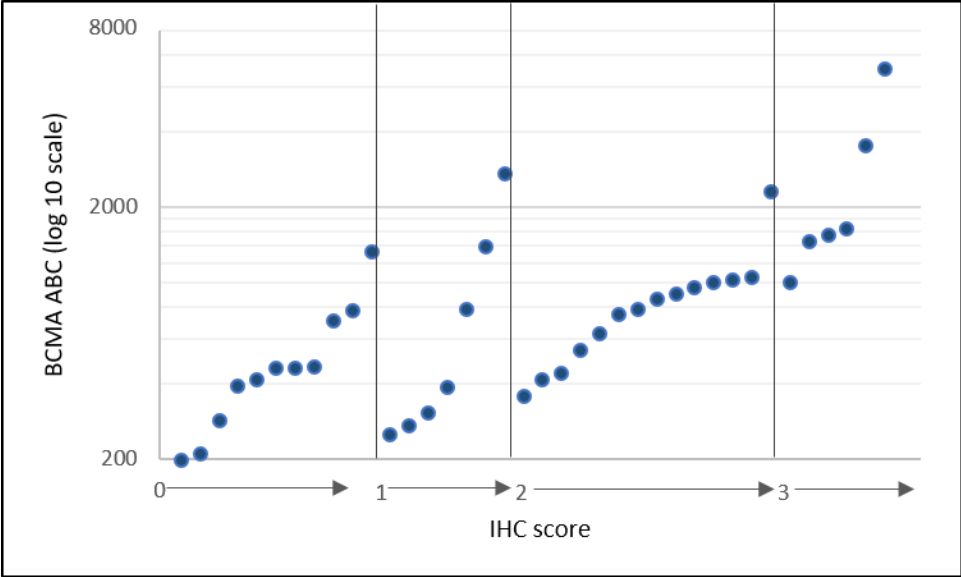


Supplementary Figure 1: Controls for BCMA staining A. Bone marrow biopsy stained with isotypic control. B. Cell line RPMI8226 with moderate/low BCMA expression (BCMA ABC=1553) C. Cell line BCMA- K562 with high BCMA expression (BCMA ABC=8,432).



Supplementary Figure 2: Gating strategy of plasma cell analysis: Under the “singlets” gate, we gate the “CD38+ve/CD138+ve” cells, followed by gating the CD45 dim to negative. Debris are excluded in “Clean PCs” gate , based on FSC/SSC properties. Abnormal plasma cells are differentiated from normal plasma cells by their phenotype (dim to negative CD19, dim to negative CD45, positive for CD56, dim for CD81). The aberrant phenotype may vary from case to another, and “abnormal plasma gate” is determined accordingly.



Supplementary Figure 3: Correlation between BCMA quantitation using flowcytometry and the proposed IHC scoring system.