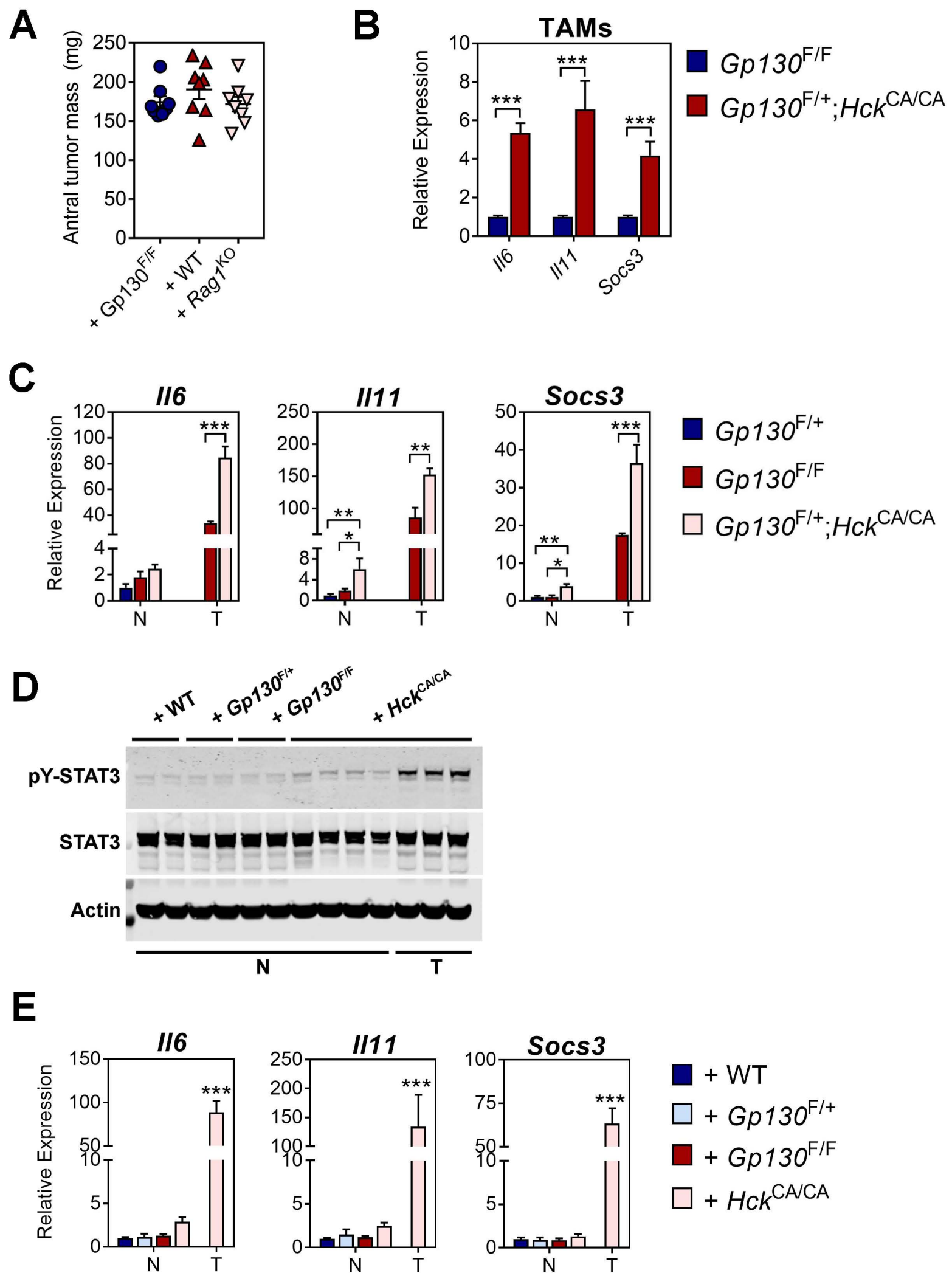


# Supplementary Figure 1



**Supplementary Figure 1. Constitutive HCK activity in bone marrow-derived cells enhances STAT3 activation in tumors and tumor-associated macrophages.**

*This figure relates to Figure 1.*

**(A)** Total antral tumor mass of  $Gp130^{F/F}$  bone marrow chimeras reconstituted with either  $Gp130^{F/F}$ , WT or  $Rag1^{KO}$  bone marrow at 8-weeks of age and analyzed 12-weeks after reconstitution. Each symbol represents an individual mouse.

**(B)** qRT-PCR analysis for *Il6*, *Il11* and *Socs3* expression in TAMs isolated from 1-year-old  $Gp130^{F/F}$  and  $Gp130^{F/+};Hck^{CA/CA}$  mice. n=4 mice per cohort.

**(C)** qRT-PCR analysis for *Il6*, *Il11* and *Socs3* expression in normal stomach (N) and tumor cell (T) lysates prepared from 1-year-old  $Gp130^{F/+}$ ,  $Gp130^{F/F}$  and  $Gp130^{F/+};Hck^{CA/CA}$  mice. n=8 mice per cohort.

**(D)** Western blot analysis for phosphorylated and total STAT3 protein isoforms performed on normal stomach (N) and tumor cell (T) lysates from bone marrow chimeras analyzed in Figure 1C. Actin was used as a loading control. Each lane represents an individual mouse.

**(E)** qRT-PCR analysis for *Il6*, *Il11* and *Socs3* expression in normal stomach (N) and tumor cell (T) lysates of  $Gp130^{F/+}$  bone marrow chimeras analyzed in Figure 1C. n=6 mice per cohort.

Data represents mean  $\pm$  SEM, p-values from unpaired Student's T-test \*p<0.05,

\*\*p<0.01, \*\*\*p<0.001