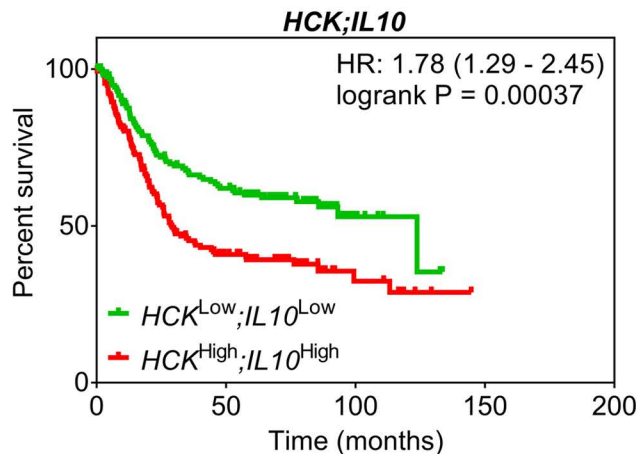
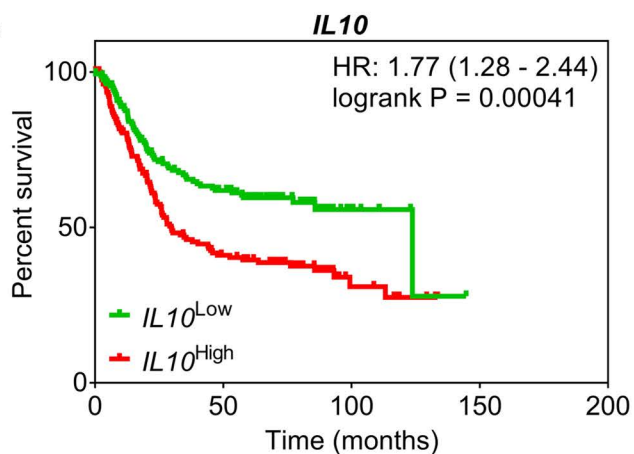
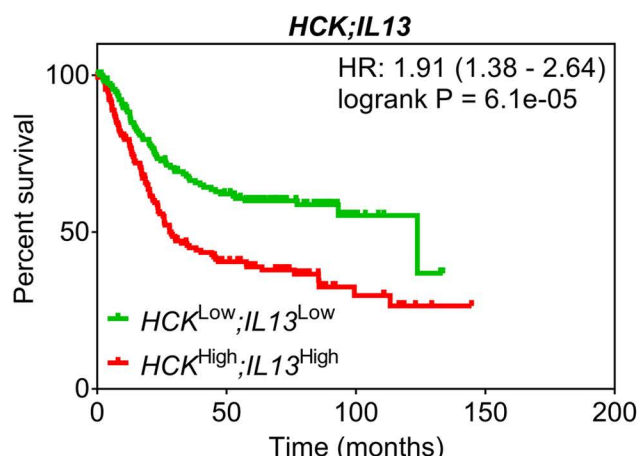
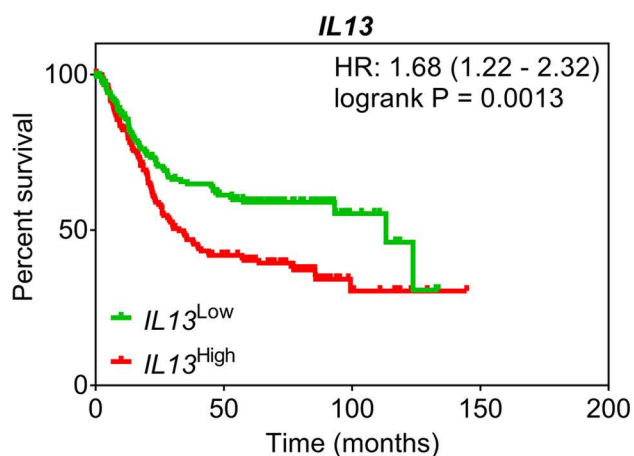
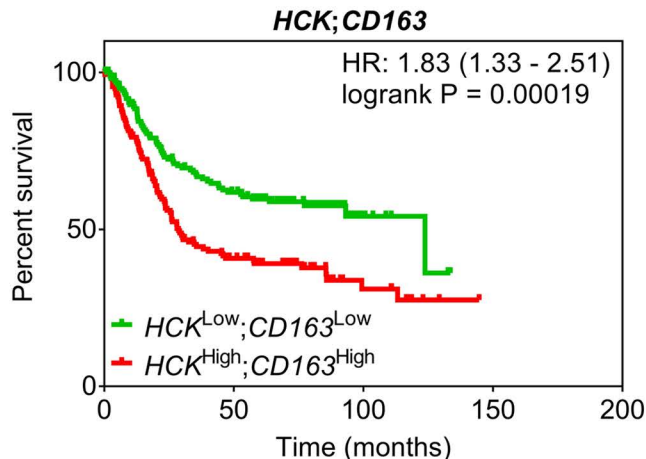
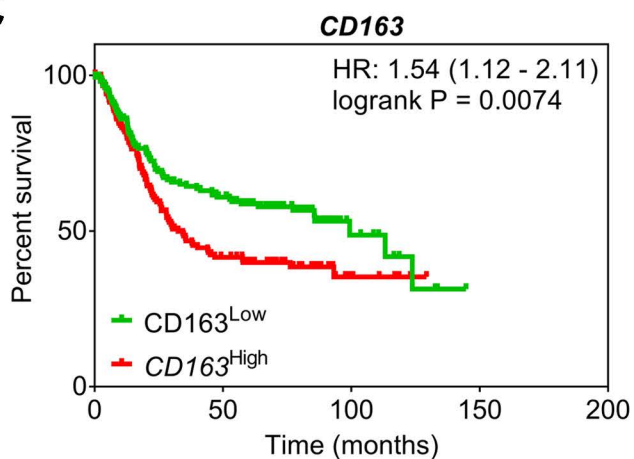
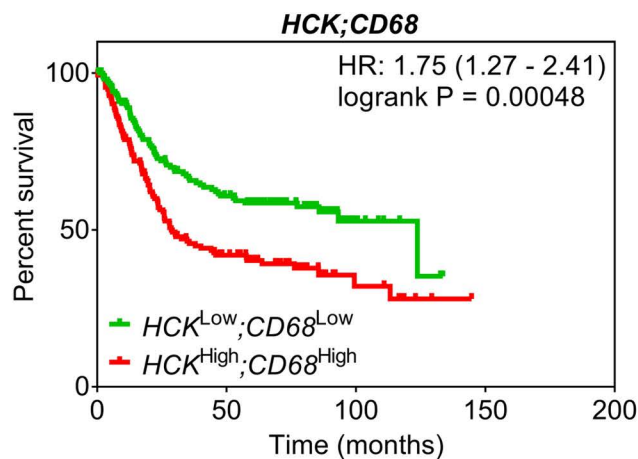
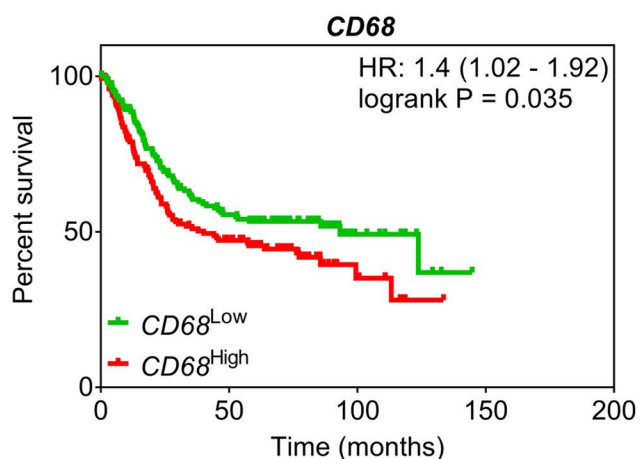


Supplementary Figure 3

A**B****C****D**

Supplementary Figure 3. Increased expression of genes associated with alternative macrophage polarization confers a poorer overall survival in human intestinal-type gastric cancer patients.

This figure relates to Figure 3.

Overall survival analysis of **(A)** *IL10* and *HCK;IL10*, **(B)** *IL13* and *HCK;IL13*, **(C)** *CD163* and *HCK;CD163* and **(D)** *CD68* and *HCK;CD68* high vs. low-expressing intestinal-type gastric cancer patients (n=320) stratified at the median level of gene expression from the manually curated KM-plot database [17].