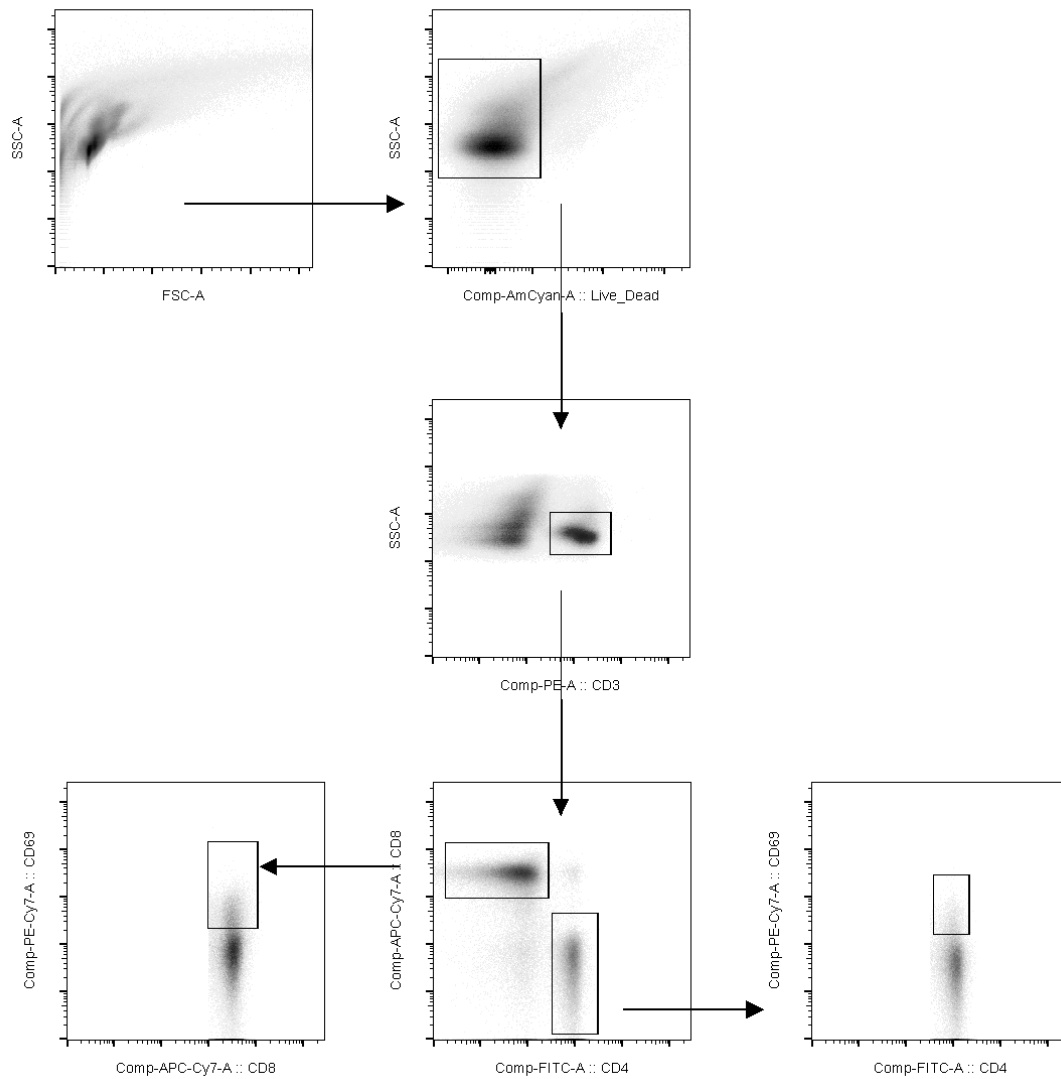


Supplemental Figure 1. Analysis of CD4 and CD8 T lymphocytes in lung parenchyma. After exclusion of dead cells, the CD3⁺ cells were analyzed for CD4 or CD8 expression and the frequency of CD69-expressing cells was determined within these populations.



Supplemental Figure 2. Analysis of GR-1⁺CD11b⁺ subsets in lung parenchyma. After exclusion of dead cells, the GR-1⁺ cells, within the CD11b⁺ subset, were analyzed according to SSC size (high or low). Next both subsets were analyzed for MHC-II and CD11b expression.

