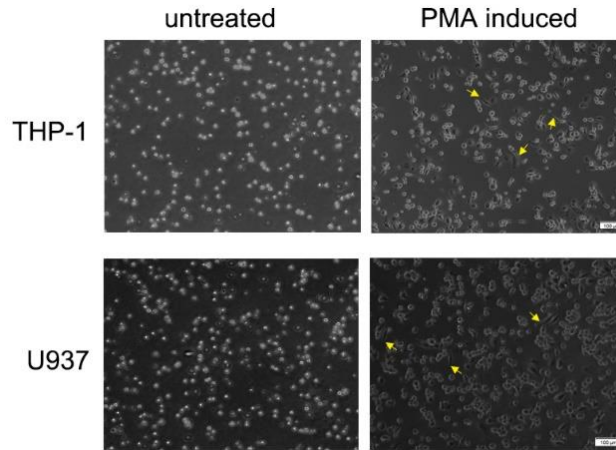


1 **Supplementary Fig. 1 Morphological changes in THP-1 and U937 cells**
2 **macrophages differentiation.**

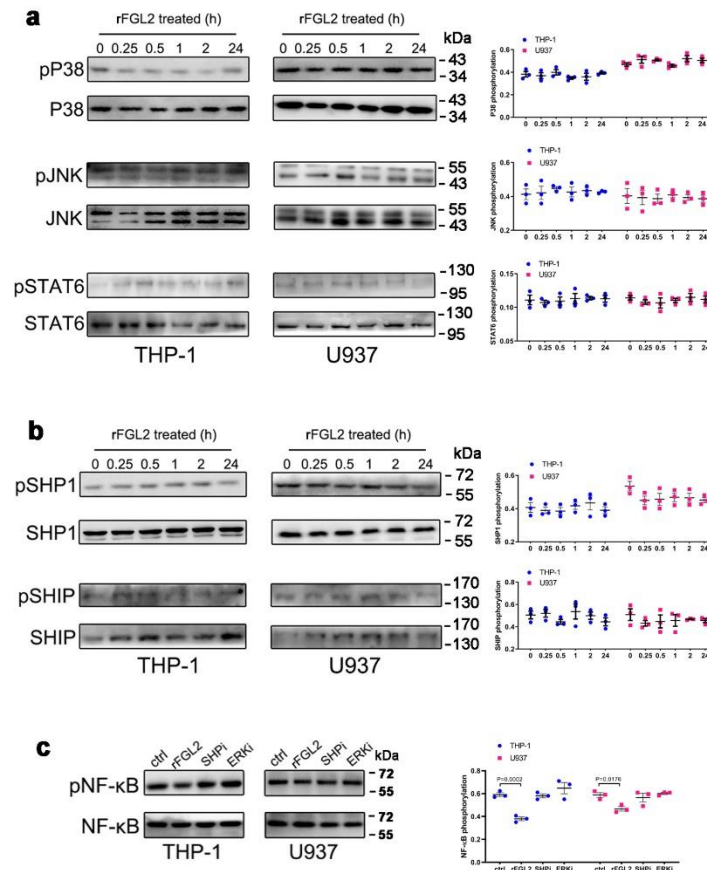


3
4 Representative images of untreated THP-1 and U937 cells and cells in the
5 presence of 100 ng per ml PMA for 48 h. Yellow arrows denote
6 pseudopodia.

7
8
9
10
11
12
13
14
15
16
17

18

19 **Supplemental Fig. 2 FGL2 had no effect on P38, JNK and STAT6**
20 **phosphorylation in THP-1 and U937 cells.**



21

22 The phosphorylation of P38, JNK, STAT6, SHP1, SHIP and NF-κB was
23 detected by western blot. Data represent the mean value ± SEM of three
24 individual experiments (n=3).

25

26

27

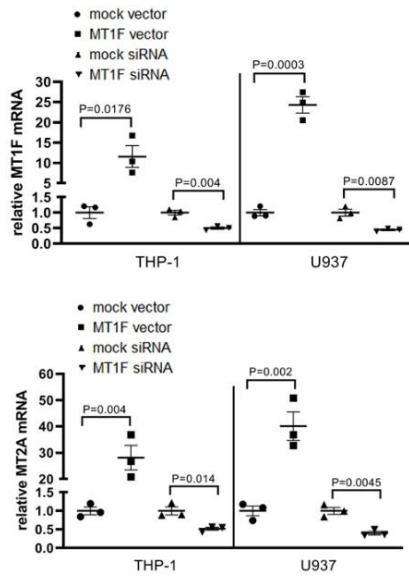
28

29

30

31 **Supplemental Fig. 3 Cell transfection efficiency in THP-1 and U937**

32 **cells.**



33

34 The transfection efficiency of MT1F and MT2A in THP-1 and U937 cells

35 was analyzed by qRT-PCR. Data represent the mean value \pm SEM of three

36 individual experiments (n=3).

37

38

39

40

41

42

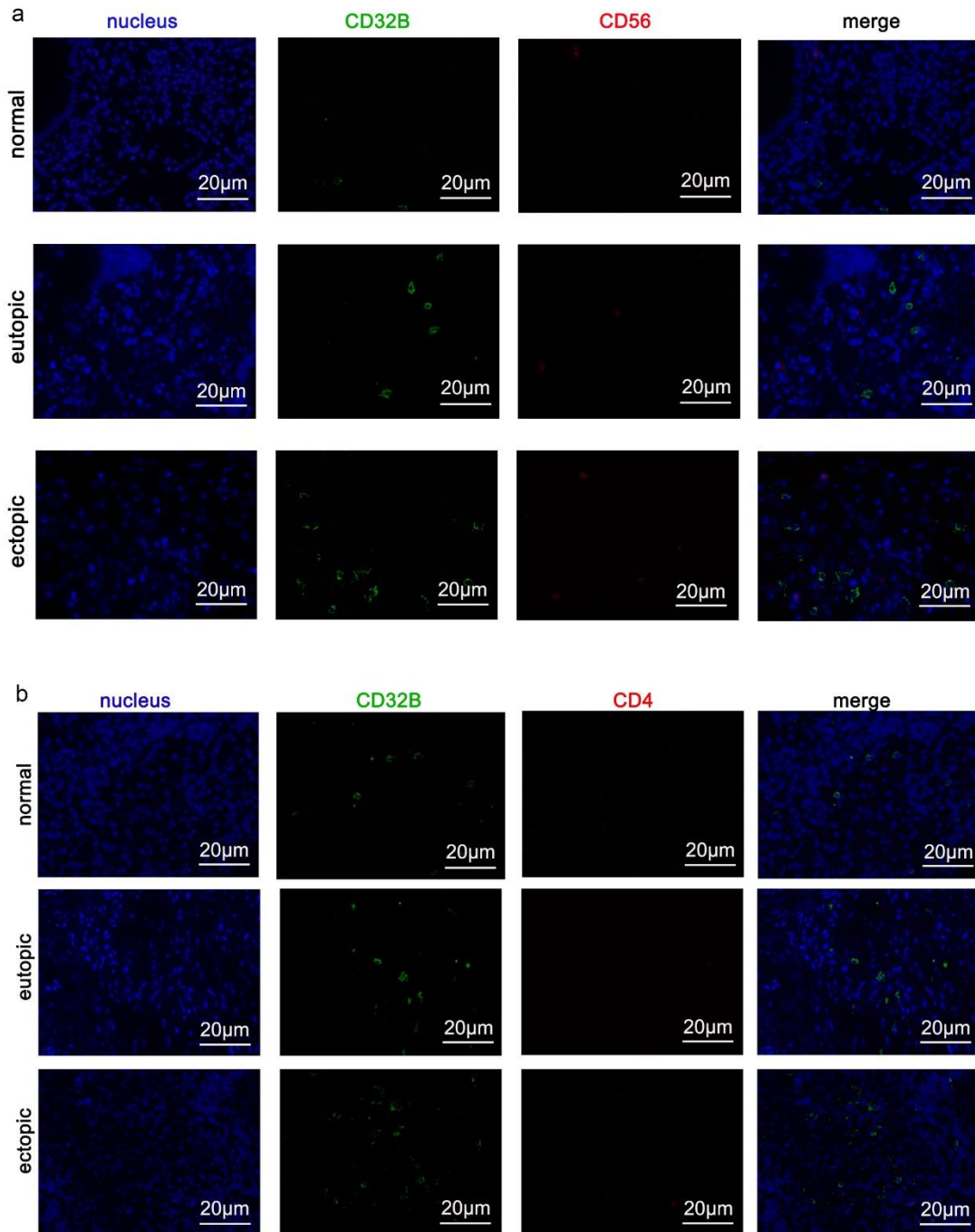
43

44

45

46

47 **Supplemental Fig. 4 The expression of CD32B on NK and T cells in**
48 **tissues.**



49

50 **(a)** Confocal microscopic analysis of nucleus (blue), CD32B (green),
51 NCAM1 (CD56, RNL-1, red), expression in normal endometrium, eutopic

52 endometrium and ectopic lesions. **(b)** Confocal microscopic analysis of
 53 nucleus (blue), CD32B (green), CD4 (red), expression in normal
 54 endometrium, eutopic endometrium and ectopic lesions. A few CD32B
 55 positive cells were NK and T cells.

56

57

58

59 **Supplementary Table 1. Key resources table.**

REAGENT RESOURCE	SOURCE	IDENTIFIER
Antibodies		
APC-Anti-human CD86	Biologend	Cat# 374208
Percp cy5.5-Anti-human HLA-DR	Biologend	Cat# 307630
PE-Anti-human IL-6	Biologend	Cat# 501107
647-Anti-human CD163	Biologend	Cat# 326508
FITC-Anti-human CD206	Biologend	Cat# 321104
APC-Anti-human TGF- β	Biologend	Cat# 349608
FITC-donkey anti-rabbit IgG	Biologend	Cat# 406403
Rabbit anti-human FGL2	Abcam	Cat# ab198029
Rabbit anti-human CD32B	Abcam	Cat# ab45143
Goat anti-human CD32B	Abcam	Cat# 110076
Mouse anti-CD68 antibody	Abcam	Cat# ab955
Mouse anti-human NCAM1 (RNL-1, CD56)	Abcam	Cat# ab9018
Mouse anti-CD4 antibody	R&D	Cat# MAB379
donkey anti-goat IgG (Alexa Fluor 488)	Abcam	Cat# 150129
donkey anti-mouse IgG (Alexa Fluor 647)	Abcam	Cat# 150107
Goat anti-rabbit IgG (Alexa Fluor 488)	Abcam	Cat# ab181448
Goat anti-mouse IgG (Alexa Fluor 647)	Abcam	Cat# ab150119
Anti-human pNF- κ B	Cell Signaling	Cat# 3033
Anti-human NF- κ B	Cell Signaling	Cat# 8242
Anti-human pERK1/2	Cell Signaling	Cat# 4370
Anti-human ERK1/2	Cell Signaling	Cat# 4695
Anti-human pSTAT3	Cell Signaling	Cat# 9138
Anti-human STAT3	Cell Signaling	Cat# 9139
Anti-human pSHP2	Cell Signaling	Cat# 3751
Anti-human SHP2	Cell Signaling	Cat# 3397
Anti-human pSHIP	Cell Signaling	Cat# 2725

Anti-human SHIP	Cell Signaling	Cat# 3941
Anti-human pSHP1	Bioworld	Cat# BS94059
Anti-human SHP1	Bioworld	Cat# BS91238
anti-Mouse second antibodies	Bioworld	Cat# BS12478
anti-Rabbit second antibodies	Bioworld	Cat# BS10043

Chemicals, Peptides, and Recombinant Proteins

Recombinant Human M-CSF	Peprotech	Cat# AF-300-25
Recombinant Human IFN- γ	Peprotech	Cat# AF-300-02
Recombinant Human IL-4	Peprotech	Cat# AF-200-04
Recombinant Human FGL2	Abnova	Cat# H00010875-P01
SHP2 inhibitor	Millipore	Cat# 565851
ERK inhibitor	Selleck	Cat# SCH772984
STAT3 inhibitor	Selleck	Cat# S3I-201
Ficoll	Sigma-Aldrich	Cat# F2637
PBS	GIBCO	Cat# 20012-068
Fetal bovine serum	HyClone	Cat# SH30406.05
DMEM/F12	HyClone	Cat# SH30023.01
RPMI 1640 Medium	GIBCO	Cat# 21875034
type IV collagenase	Sigma	Cat# M9445
LPS	Sigma	Cat# L2630
DAPI	Cell Signaling	Cat# 4083
PMA	Sigma	Cat# P8139
ionomycin	Sigma	Cat# I3909
Monensin	BD Biosciences	Cat# M5273
Lipofectamine 2000	Invitrogen	Cat# 11668-019
ECL	Millipore	Cat# WBKLS01 00

Critical Commercial Assays

Human Gene Expression Array	Affymetrix	Cat# GSE133867
Mo cell Isolation Kit	Miltenyi Biotec	Cat# 130-050-201
Treg cell Isolation Kit	Miltenyi Biotec	Cat# 130-091-301
Tregs expansion kit	Miltenyi Biotec	Cat# 130-095-353
NK cell Isolation Kit	Miltenyi Biotec	Cat# 130-092-657
naïve CD4+ T cell isolation kit	Miltenyi Biotec	Cat# 130-094-131
qPCR Mix Kit	Takara	Cat# RR037A
human FGL2 ELISA kits	BioLegend	Cat# 436907
human IL-10 ELISA kits	R&D	Cat# D1000B
human IL-12p70 ELISA kits	R&D	Cat# D1200
Fix & Perm cell permeabilization kit	BioLegend	Cat# 421401
BCA protein assay	Beyotime	Cat# P0010

Deposited Data

Experimental Models: Cell Lines

THP-1	ATCC	Cat# ATCC® TIB-202™
U937	ATCC	Cat# ATCC® CRL-1593.2™

Oligonucleotides

Primer:	T-bet	(FWD):	This paper	N/A
	TGGAGGTGTCGGGGAAACT (5'-3')			
Primer:	T-bet (REV):		This paper	N/A
	TGGGAACATCCGCCGT (5'-3')			
Primer:	GATA3	(FWD):	This paper	N/A
	TGTGCTCGGAGGGTTTCTTG (5'-3')			
Primer:	GATA3	(REV):	This paper	N/A
	GCACGCTGGTAGCTCATAACA (5'-3')			
Primer:	RORC	(FWD):	This paper	N/A
	CTGAGAAGGACAGGGAGCCA (5'-3')			
Primer:	RORC	(REV):	This paper	N/A
	CGTAGTGGATCCCAGACGAC (5'-3')			
Primer:	FOXP3	(FWD):	This paper	N/A
	TCCCAGAGTTCCTCCACAAC (5'-3')			
Primer:	FOXP3	(REV):	This paper	N/A
	ATTGAGTGTCCGCTGCTTCT (5'-3')			
Primer:	FGL2	(FWD):	This paper	N/A
	TCCCAGAGTTCCTCCACAAC (5'-3')			
Primer:	FGL2	(REV):	This paper	N/A
	GGTGAAGTTGGTGCTCCCAT (5'-3')			
Primer:	NF-κB	(FWD):	This paper	N/A
	TTTGGGAAGGCCTGAACAAATG (5'-3')			
Primer:	NF-κB	(REV):	This paper	N/A
	GGTATGGGCCATCTGCTGTT (5'-3')			
Primer:	STAT1	(FWD):	This paper	N/A
	GTTATGGGACCGCACCTTCA (5'-3')			
Primer:	STAT1	(REV):	This paper	N/A
	CAGTGAAGTGGACCCCTGTC (5'-3')			
Primer:	C/EBPα	(FWD):	This paper	N/A
	GGTGGACAAGAAGCAACGA (5'-3')			
Primer:	C/EBPα	(REV):	This paper	N/A
	GTCATTGTCACTGGTCAGCTC (5'-3')			
Primer:	MT1E	(FWD):	This paper	N/A
	ATGGACCCCAACTGCTCTT (5'-3')			
Primer:	MT1E	(REV):	This paper	N/A
	CTTCTCCGATGCCCTTT (5'-3')			
Primer:	MT1F	(FWD):	This paper	N/A
	ATGGACCCCAACTGCTCCT (5'-3')			
Primer:	MT1F	(REV):	This paper	N/A
	ACTTCTCTGACGCCCTTTG (5'-3')			
Primer:	MT1G	(FWD):	This paper	N/A
	ATGGACCCCAACTGCTCCT (5'-3')			
Primer:	MT1G	(REV):	This paper	N/A
	ACTTCTCCGATGCCCTTT (5'-3')			

Primer: MT1M GCAAGTGCAAAGAGTGCAA (5'-3')	(FWD): This paper	N/A
Primer: MT1M CAGTTCTCCAACGTCCCTTT (5'-3')	(REV): This paper	N/A
Primer: MT2A ATGGATCCCAACTGCTCCT (5'-3')	(FWD): This paper	N/A
Primer: MT2A GCAGCAGCTTTTCTTGCAG (5'-3')	(REV): This paper	N/A
Primer: NOS2 ATTCAGCTCAGCTGTGCATCG (5'-3')	(FWD): This paper	N/A
Primer: NOS2 TCAGGTGGGATTTCTGAAGAG (5'-3')	(REV): This paper	N/A
Primer: Arg1 CTCAAGCAGACCAGCCTTTC (5'-3')	(FWD): This paper	N/A
Primer: Arg1 GCCAAGTCCAGAACCATAGG (5'-3')	(REV): This paper	N/A

Negative control siRNA: sense (5'-3'): UUC UCC GAA CGU GUC ACG UTT antisense (5'-3'): ACG UGA CAC GUU CGG AGA ATT	GenePharma	N/A
---	------------	-----

MT1F siRNA: Sense (5'-3'): GAC AUG UAC AAA CCU GGA UTT Antisense (5'-3'): AUC CAG GUU UGU ACA UGU CTT	GenePharma	N/A
---	------------	-----

MT2A siRNA: Sense (5'-3'): CGC UCC CAG AUG UAA AGA ATT Antisense (5'-3'): UUC UUU ACA UCU GGG AGC GTT	GenePharma	N/A
---	------------	-----

Software and Algorithms

Prism v.8.0	GraphPad	http://www.graphpad.com
-------------	----------	---

60

61