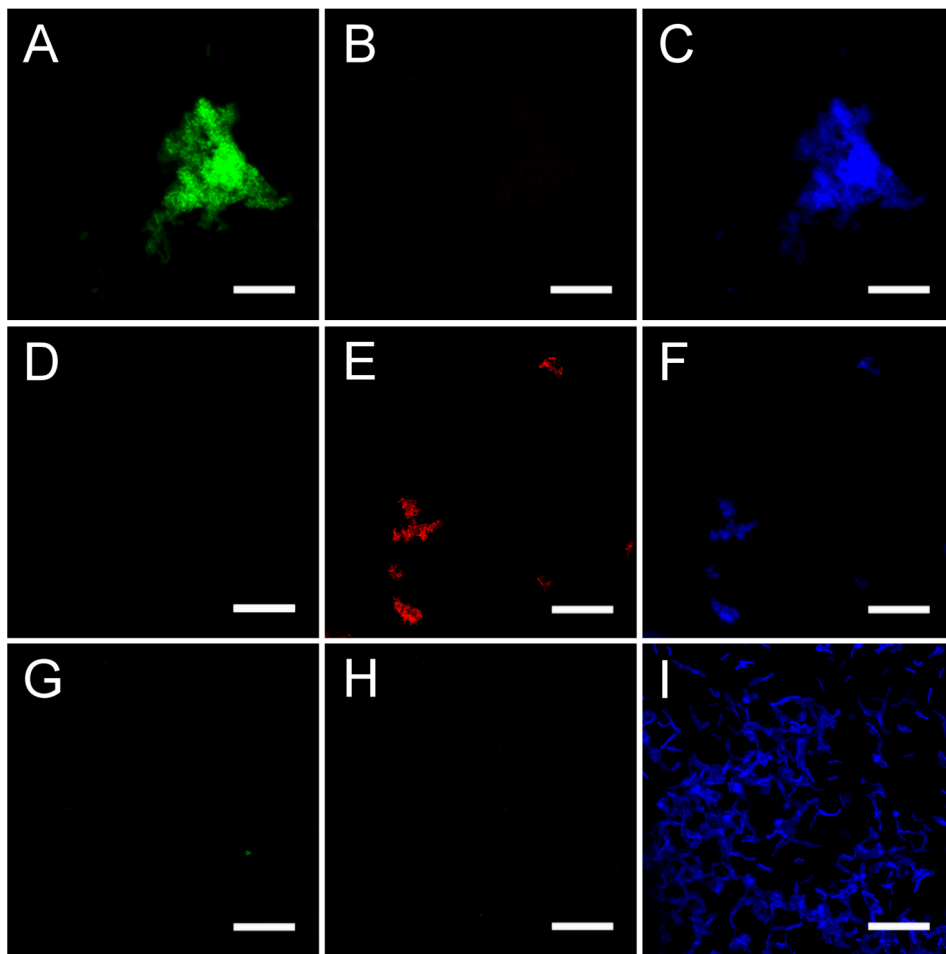


## Supplementary



**Figure S1. Assessment of probe specificity.** Fluorescence in situ hybridization was performed with the probes STR405 (shown in green), targeting Streptococci, ACT476 (red), targeting *Actinomyces* spp. and EUB338 (blue), targeting all bacteria in the biofilms. Fixed cells of *Streptococcus mitis*, AN and LR served as positive and negative controls for the three probes. *S. mitis* was stained by STR405 (A) and EUB338 (C), but not by ACT476 (B). AN was not detected by STR405 (D), but stained by ACT476 (E) and EUB338 (F). LR was not visualized by any of the genus-specific probes (G and H), but by EUB338 (I). Bars = 20  $\mu\text{m}$ .