

Figure S1: HR MALDI-TOF mass-spectrum of erbium (3) bis-tetrakis-4-[3-(3,4-dicyanophenoxy)phenoxy]phthalocyaninato (CHCA as matrix)

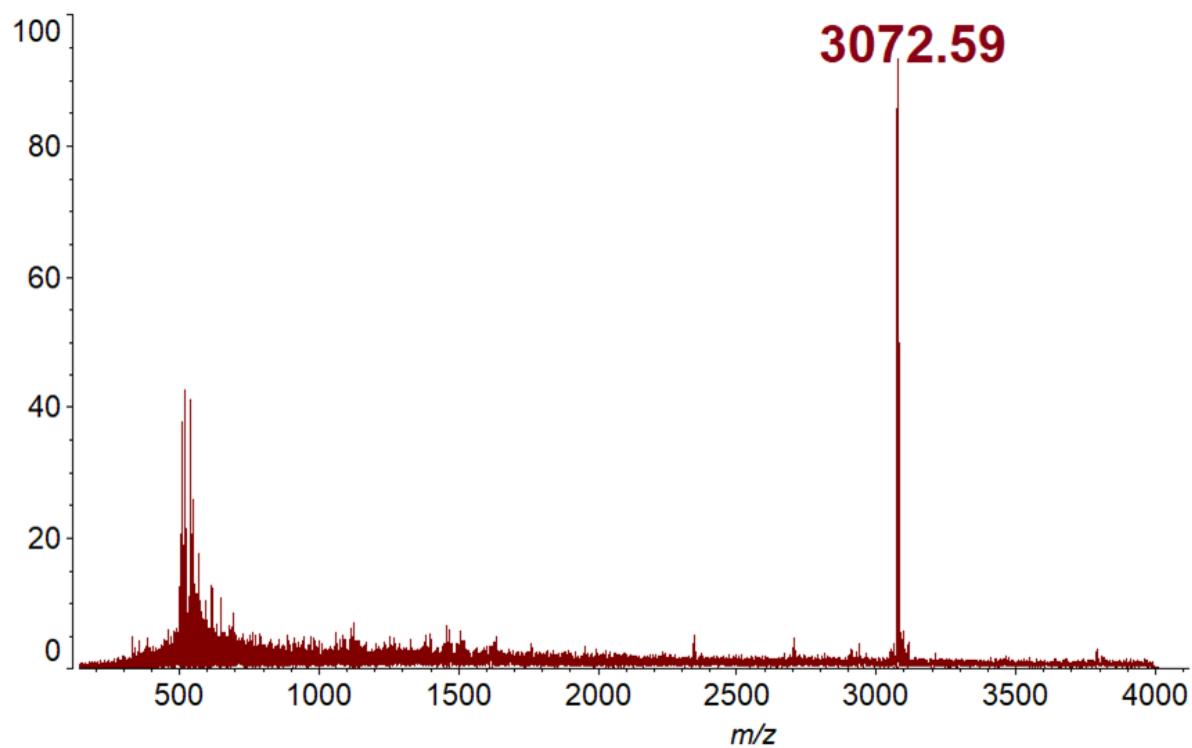


Figure S2: HR MALDI-TOF mass-spectrum of ytterbium (5) bis-tetrakis-4-[3-(3,4-dicyanophenoxy)phenoxy]phthalocyaninato (CHCA as matrix).

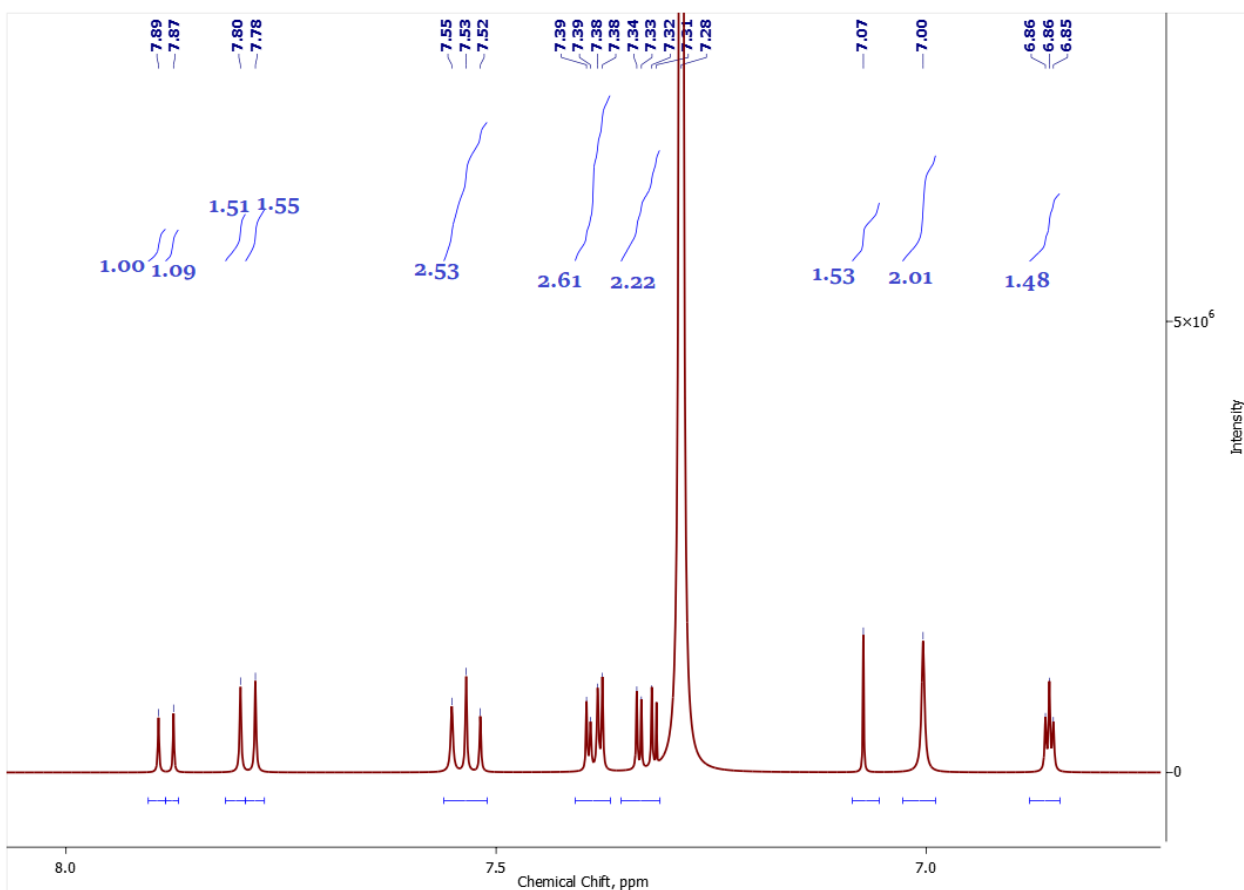


Figure S3. ^1H NMR spectrum of lutetium (4) bis(tetrakis-4-[3-(3,4-dicyanophenoxy)phenoxy]phthalocyaninato) in CDCl_3 ,

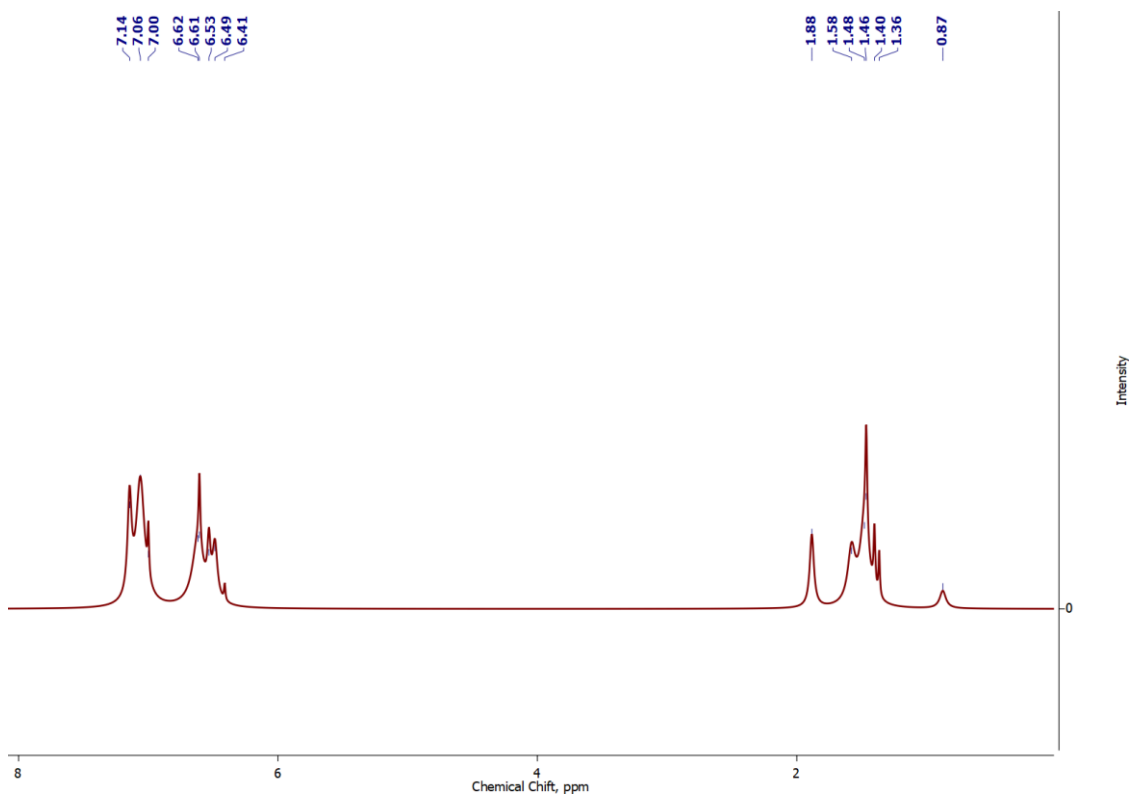


Figure S4. ^1H NMR spectrum of ytterbium (5) bis(tetrakis-4-[3-(3,4-dicyanophenoxy)phenoxy]phthalocyaninato) in CDCl_3 .