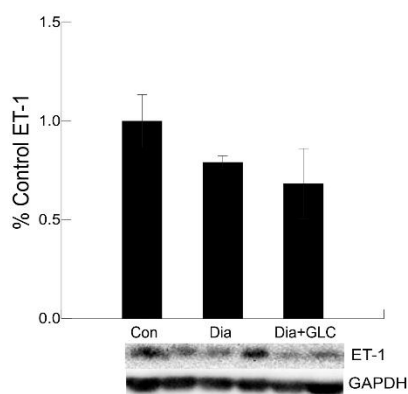
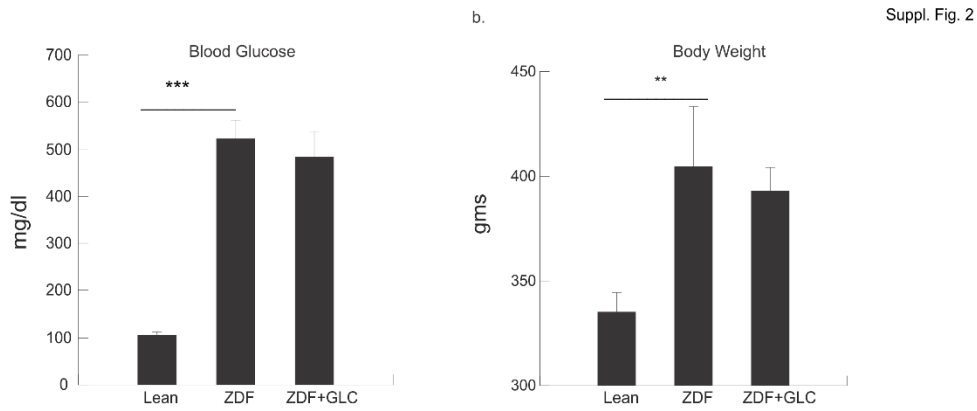


Supplementary Materials:

Suppl. Fig. 1

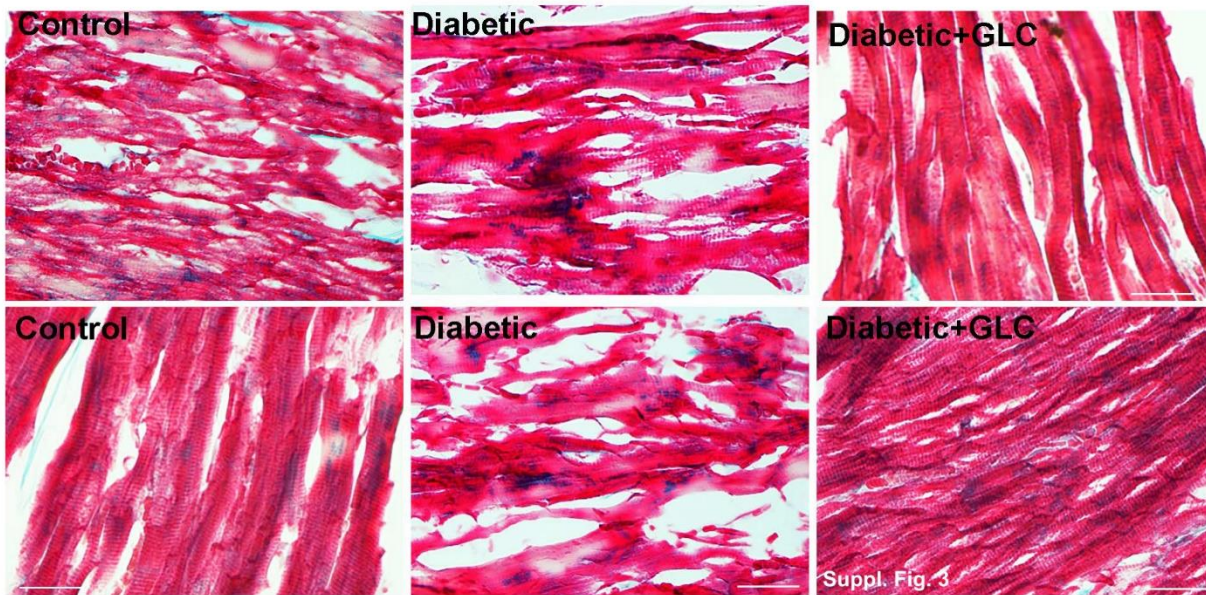


Suppl. Fig. 1. No significant change in endothelin 1 expression in diabetic heart tissues as well as its expression in the GLC-treated animals.



Original supplemental figure from <https://doi.org/10.3390/ijms21030881>

Suppl. Fig. 2. No significant change in blood glucose levels and body weight in diabetic GLC-treated animals as shown earlier (Fig S4; <https://doi.org/10.3390/ijms21030881>).



Suppl. Fig. 3. Images showing changes in collagen deposition (in blue) in ZDF type 2 diabetic, diabetic with GLC treatment and lean control rats.