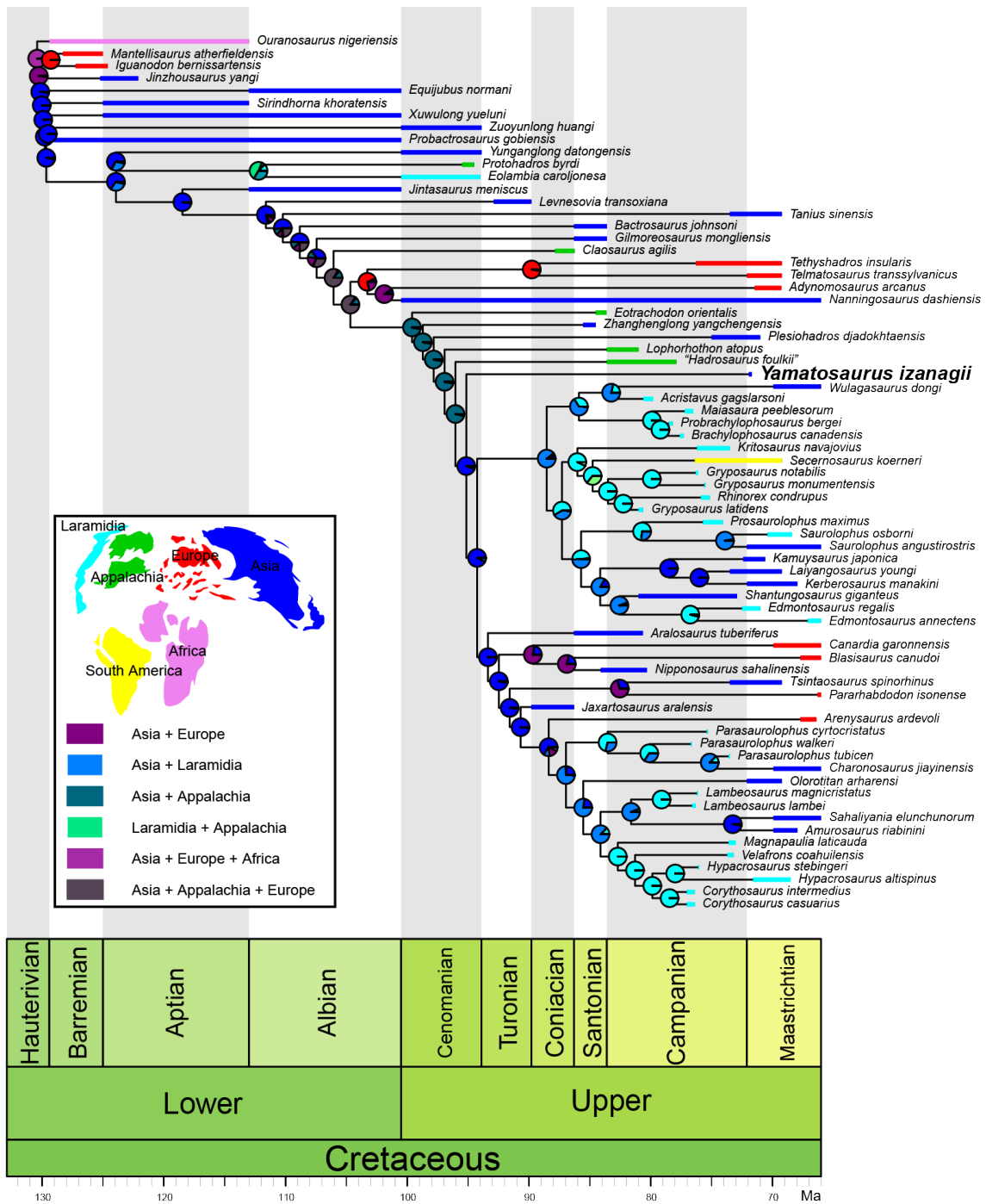
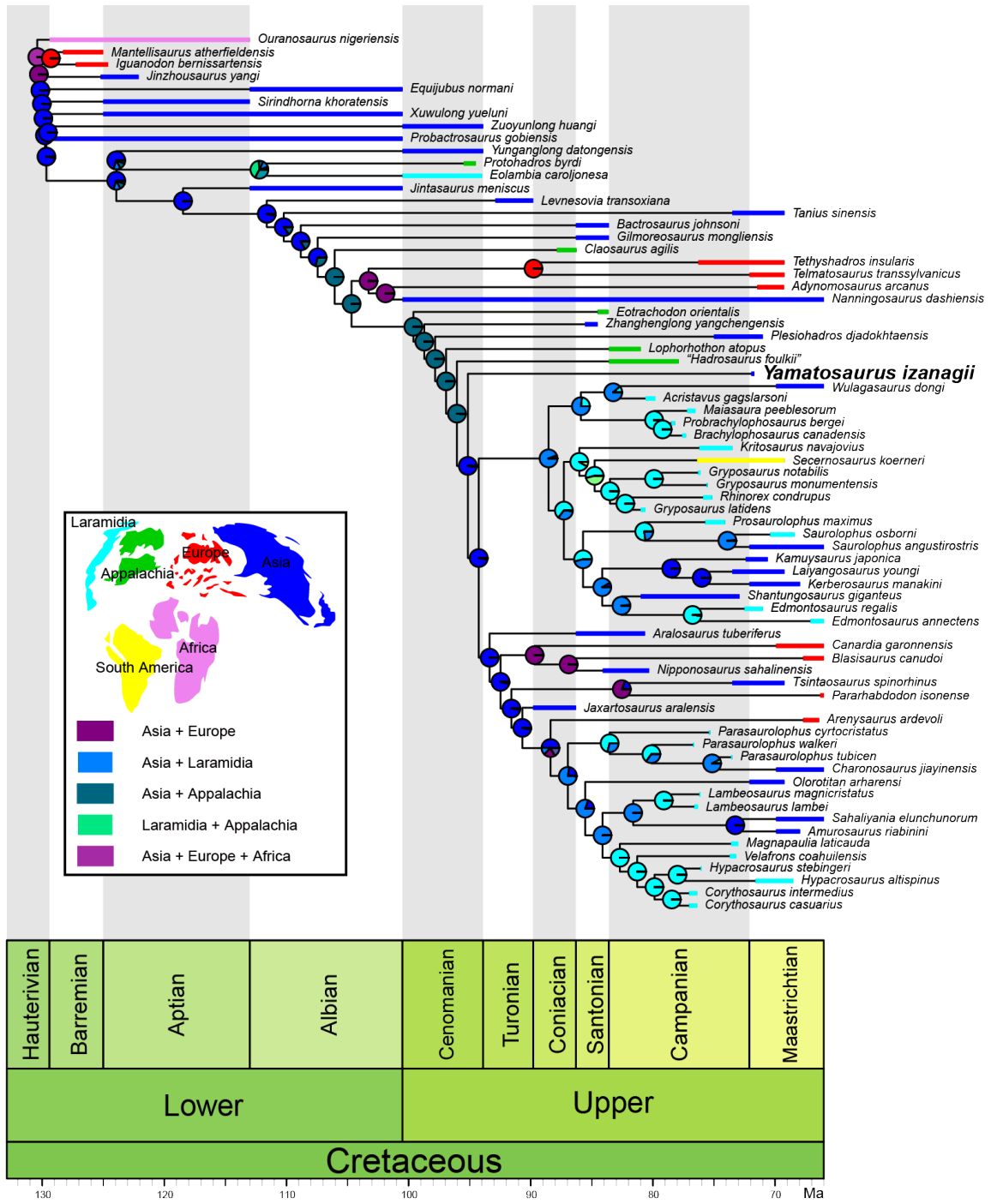


Supplementary Figure S1. Forelimb evolutionary rates on each branch based on the present phylogenetic hypothesis without *Yamatosaurus izanagii*.



Supplementary Figure S2. Result of the biogeographic analysis using the “relaxed” dispersal multiplier matrix.



Supplementary Figure S3. Result of the biogeographic analysis using the “harsh” dispersal multiplier matrix.