

ONLINE SUPPLEMENTAL MATERIAL

SUPPLEMENTAL FIGURE LEGENDS

Supplemental figure 1. Surface area of fibroblasts was decreased after glyoxal addition

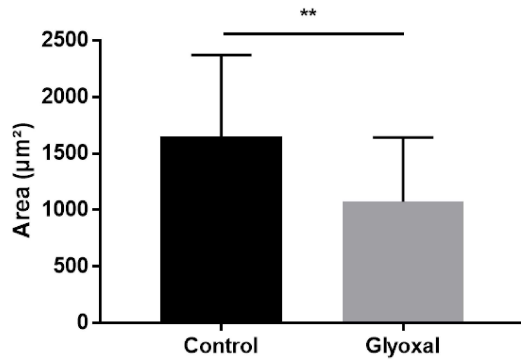
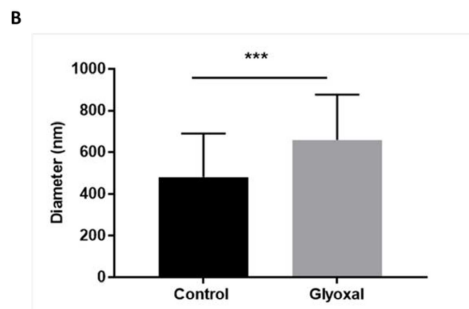
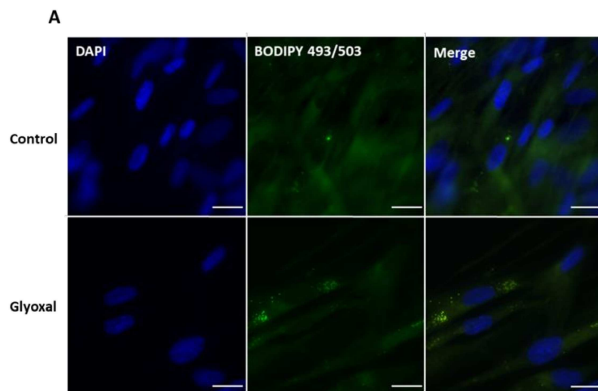
Assay was made on 5 fibroblasts on 3 different wells from 1 donor. Measure of cellular area in μm^2 . Mann-Whitney test control versus glyoxal is indicated ** $p < 0.01$. Data represent the mean \pm SD.

Supplemental figure 2. Post confluent fibroblasts accumulated larger lipid vesicles

Assays were made on 8 days post confluence fibroblasts from three different donors. Control: untreated cells; Glyoxal: (0,6 mM). **A/** Immunofluorescence of BODIPY 493/503 in green, and DAPI for nucleus in blue (Scale bare, 20 μm). **B/** Quantification of lipid droplets diameter (nm). Mann-Whitney test control versus glyoxal is indicated *** $p < 0.001$. Data represent the mean \pm SD.

Supplemental figure 3. AICAR 1mM induced an important phosphorylation of AMPk

Assays were made on fibroblasts from three different donors. Control: untreated cells; Glyoxal: (0,6 mM); AICAR (1 mM); Glyoxal+AICAR: (0.6 mM glyoxal+1 mM AICAR). **A/** Western-blot analysis of AMPk α and P-AMPk α . **B/** Quantification of P-AMPk α / AMPk α ratio. Multiple t test is indicated ** $p < 0.01$; ns = non-significant. Data represent the mean \pm SD.

SUPPLEMENTAL FIGURES**Supplementary figure 1.****Supplementary figure 2.**

Supplemental figure 3.

