

Supplementary Data

FIGURE

Sample Table of Predictive Probability Values (PPV) for a Learner

Subcompetency	Threshold	Yr1, Mid-Year	Yr1, Year-End	Yr2, Mid-Year	Yr2, Year-End	Yr3, Mid-Year	Yr3, Year-End	Yr4, Mid-Year
PC01	≤ Level 5.0							
	≤ Level 4.5							
	≤ Level 4.0							4.5
	≤ Level 3.5							9.2
	≤ Level 3.0					4.8	7.5	42.8
	≤ Level 2.5				4.6	9.0	27.5	63.6
	≤ Level 2.0			4.8	5.9	28.1	46.0	
	≤ Level 1.5			5.7	24.8			
	≤ Level 1.0	4.3	4.3	21.4	49.4			
	PC02	≤ Level 5.0						
≤ Level 4.5								
≤ Level 4.0								
≤ Level 3.5					5.2			12.4
≤ Level 3.0					5.3	6.0	9.8	46.7
≤ Level 2.5					5.9	11.4	34.6	65.6
≤ Level 2.0				5.8	7.8	36.3	50.8	
≤ Level 1.5				7.8	29.3	69.3		
≤ Level 1.0		5.5	5.7	21.4	74.2			

Predictive probability values (PPVs) are estimates that Milestone ratings will fall below Level 4 (the recommended graduation target) by time of graduation, based on national longitudinal milestone ratings. The above table highlights PPVs listed in columns that correspond to each six-month milestone reporting period. The values within the table (PPVs) indicate the percent probability that a learner rated at a certain level with not reach Level 4 in that subcompetency by graduation. For example, in the PC01 subcompetency above, if a learner is rated at a Level of 2.0 in the middle of the 3rd post-graduate year, the value of 28.0 indicates a 28% probability that the resident will not achieve Level 4 in this subcompetency by the time of graduation.

Additional Resources

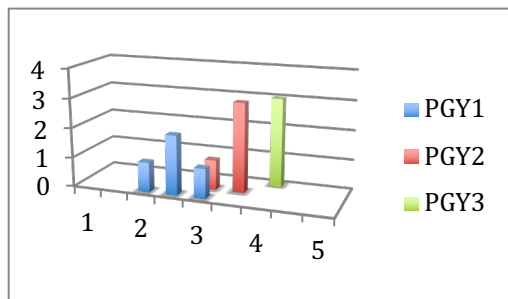
1. Accreditation Council for Graduate Medical Education. Milestones National Report 2019. <https://www.acgme.org/Portals/0/PDFs/Milestones/2019MilestonesNationalReportFinal.pdf?ver=2019-09-30-110837-587>. Accessed April 5, 2021.
2. Accreditation Council for Graduate Medical Education. Clinical Competency Committees: A Guidebook for Programs. <https://www.acgme.org/Portals/0/ACGMEClinicalCompetencyCommitteeGuidebook.pdf>. Accessed April 5, 2021.

Program Milestones Distribution by Subcompetency and PGY Year

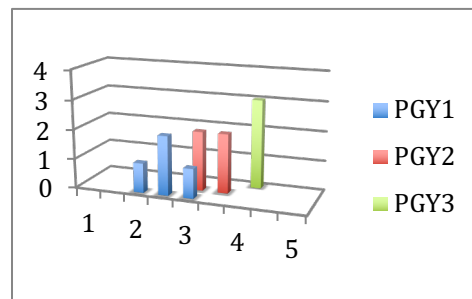
Cardiovascular Medicine End of Year Milestones

Vertical Axis – Number of residents assigned the milestone level
 Horizontal Axis - Milestone level assigned

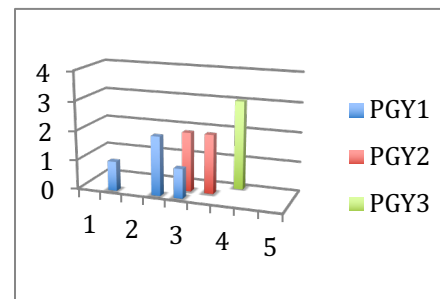
PC-1



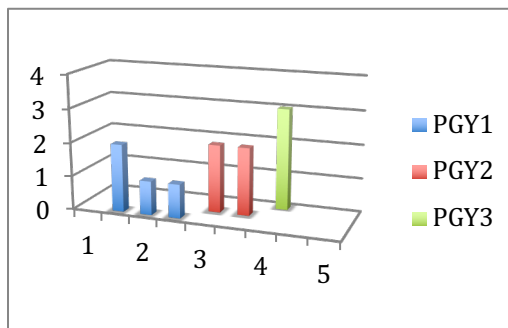
PC-2



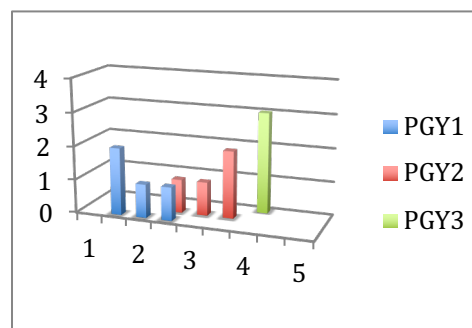
PC-3



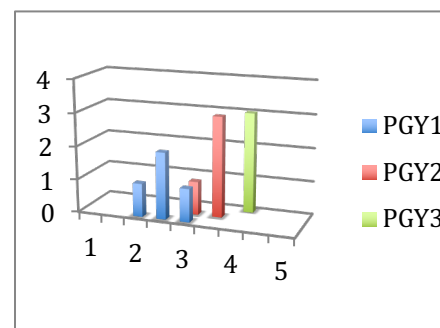
PC-4



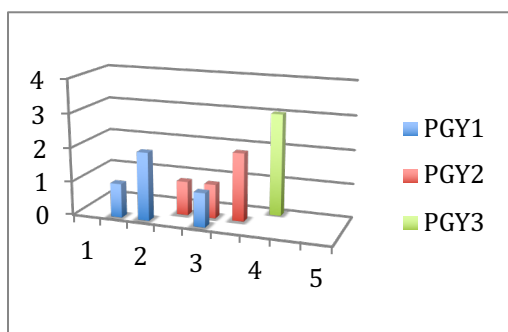
PC-5



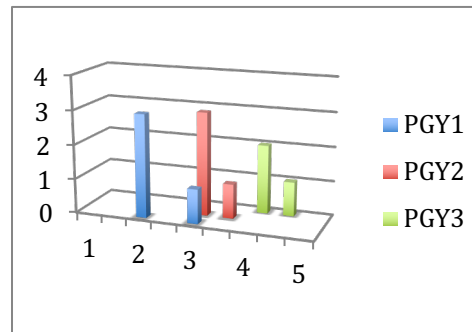
PC-6



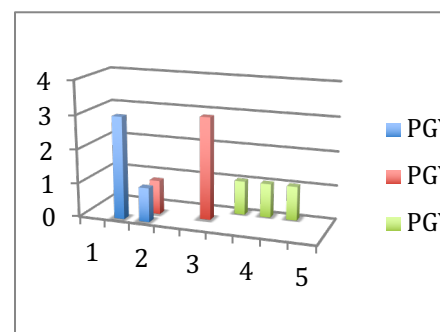
MK-1



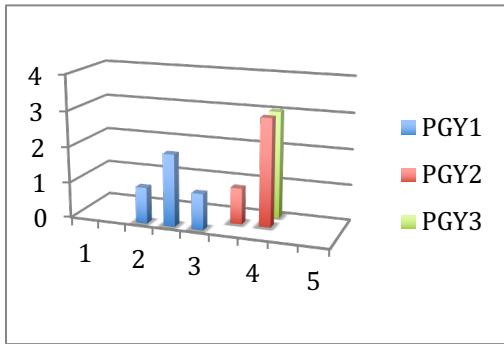
MK-2



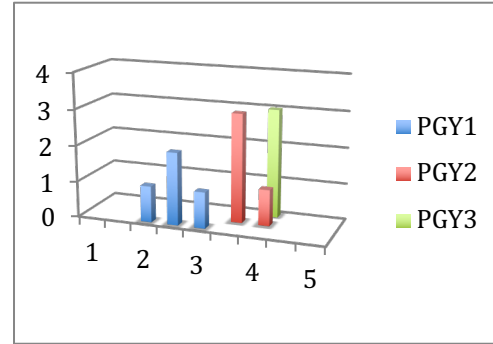
MK-3



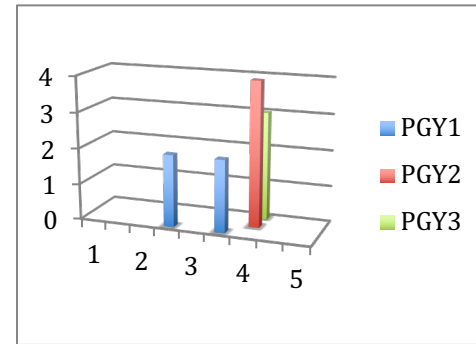
PR-2



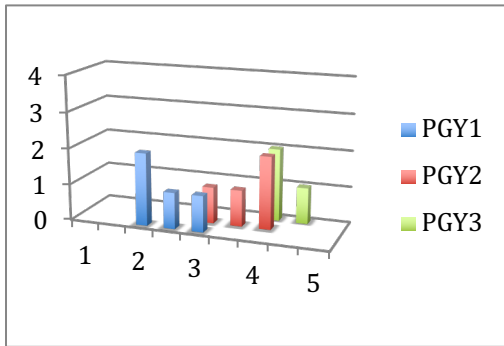
PR-3



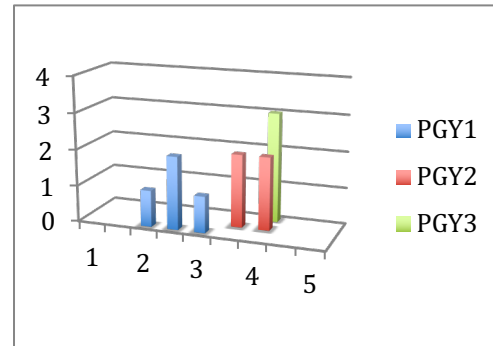
PR-4



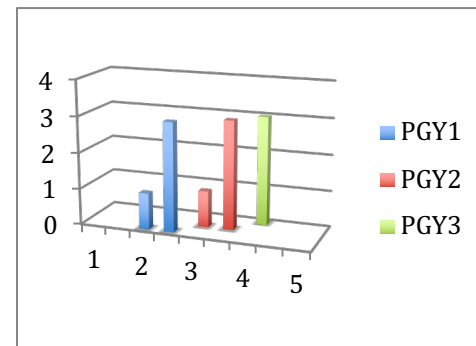
ICS-1



ICS-2



ICS-3



One-Year Program Milestones Mid- and End-of-Year Distribution by Subcompetency

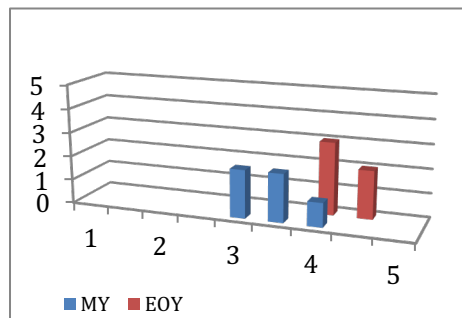
Geriatrics: Mid-Year and End-of-Year Milestones

Vertical Axis - Number of residents assigned the milestone level

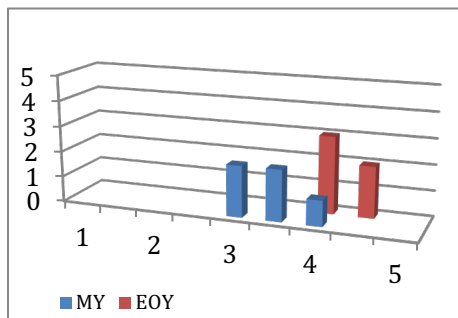
Horizontal Axis - Milestone level assigned

Abbreviations: MY, mid-year; EOY, end-of year

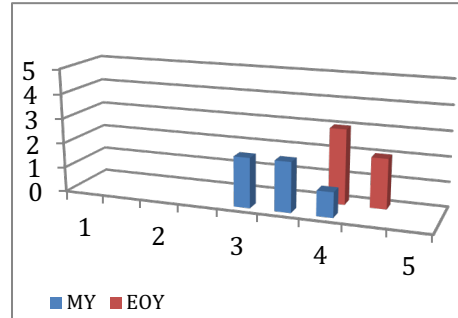
PC-1



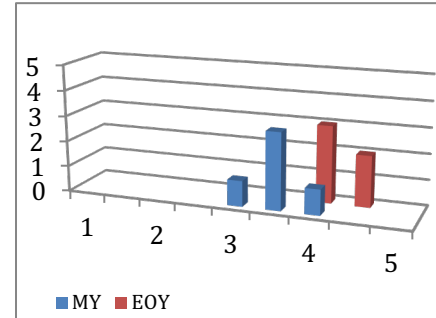
PC-2



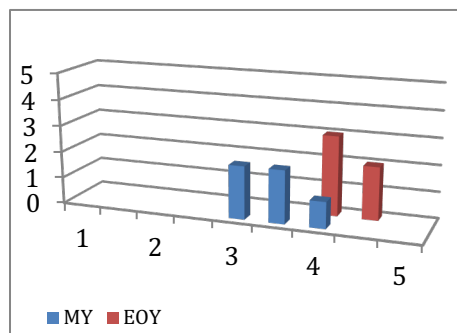
PC-3



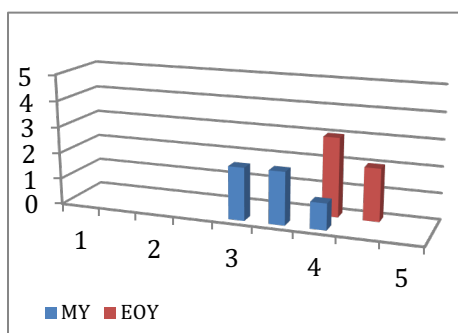
PC-5



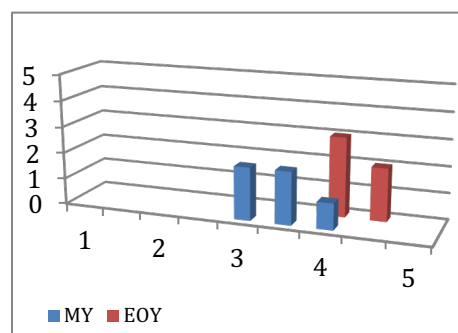
PC-6



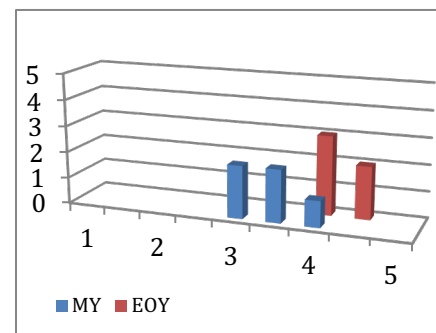
MK-1



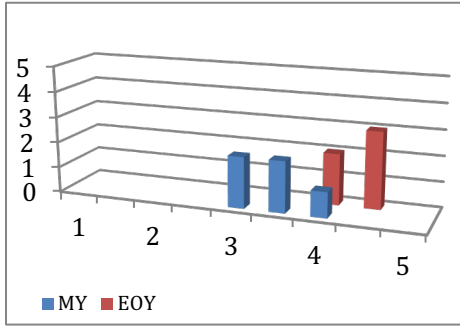
MK-2



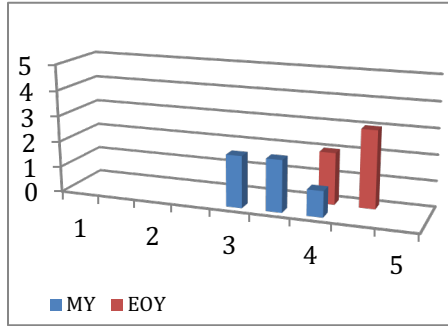
MK-3



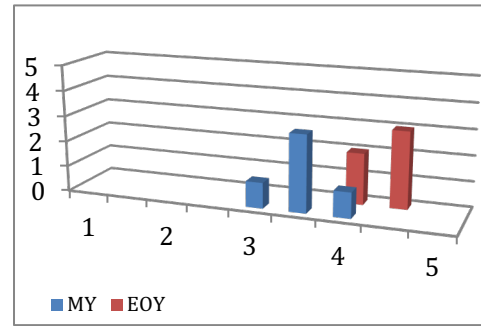
ICS-1



ICS-2



ICS-3



Creating a Program Milestones Trend Chart

Subcompetency	Resident Level	Milestone Level Assigned
PC1	1	1.5
PC1	1	2
PC1	1	2.5
PC1	2	2
PC1	2	3
PC1	2	3.5
PC1	3	4
PC1	3	4
PC1	3	4.5
ICS2	1	2
ICS2	1	2
ICS2	1	2.5
ICS2	2	2.5
ICS2	2	3
ICS2	2	3.5
ICS2	3	3
ICS2	3	4
ICS2	3	4
SBP1	1	2
SBP1	1	2.5
SBP1	1	2.5
SBP1	2	2.5
SBP1	2	3
SBP1	2	3
SBP1	3	3
SBP1	3	3
SBP1	3	3

1. Pull individual resident milestone levels for each subcompetency from the ACGME data file (or your own data)
2. Create a table with the number of residents at each PGY level assigned each milestone level
3. Create a 3-D Column Chart by highlighting the data in your chart
4. Create axis labels

PC1	1	1.5	2	2.5	3	3.5	4	4.5	5
PGY1		1	1	1					
PGY2			1		1	1			
PGY3							2	1	

ICS2	1	1.5	2	2.5	3	3.5	4	4.5	5
PGY1			2	1					
PGY2				1	1	1			
PGY3					1		1	1	

SBP1	1	1.5	2	2.5	3	3.5	4	4.5	5
PGY1			1	2					
PGY2				1	2				
PGY3					3				

