

# Valuation of SF-6Dv2 Health States in China Using Time Trade-off and Discrete Choice Experiment

with Duration

## Electronic Supplementary Material

Jing Wu, PhD<sup>1,2,\*</sup>, Shitong Xie, PhD<sup>1,2</sup>, Xiaoning He, PhD<sup>1,2</sup>, Gang Chen, PhD<sup>3</sup>, Gengliang Bai, MSc<sup>4</sup>, Da Feng, PhD<sup>5</sup>, Ming Hu, PhD<sup>6</sup>, Jie Jiang, PhD<sup>7</sup>, Xiaohui Wang, PhD<sup>8</sup>, Hongyan Wu, PhD<sup>9</sup>, Qunhong Wu, PhD<sup>10,11</sup>, John E. Brazier, PhD<sup>12</sup>

<sup>1</sup> School of Pharmaceutical Science and Technology, Tianjin University, Tianjin, China

<sup>2</sup> Center for Social Science Survey and Data, Tianjin University, Tianjin, China

<sup>3</sup> Centre for Health Economics, Monash Business School, Monash University, Melbourne, Victoria, Australia

<sup>4</sup> School of Health Economics and Management, Nanjing University of Chinese Medicine, Nanjing, China

<sup>5</sup> School of Pharmacy, Huazhong University of Science and Technology, Wuhan, China

<sup>6</sup> West China School of Pharmacy, Sichuan University, Chengdu, China

<sup>7</sup> College of Pharmacy, Jinan University, Guangzhou, China

<sup>8</sup> School of Public Health, Lanzhou University, Lanzhou, China

<sup>9</sup> School of Medicine and Health Management, Guizhou Medical University, Guiyang, China

<sup>10</sup> Department of Health Policy, Health Management College, Harbin Medical University, Harbin, China

<sup>11</sup> Department of Social Medicine, School of Public Health, Harbin Medical University, Harbin, China

<sup>12</sup> School of Health and Related Research, University of Sheffield, Sheffield, UK

**\*Corresponding author:** Jing Wu, Ph.D., Professor, Room 209, 24th building, Tianjin University, 92th Weijin Road,

Nankai District, Tianjin, China, 300072. E-mail: [jingwu@tju.edu.cn](mailto:jingwu@tju.edu.cn).

**Appendix Table 1 The Characteristics of respondents among eight cities**

| Characteristics                   | Cities (N [%])                   |                                   |                                   |                                   |                                 |                                   |                                   |                                     | P-value <sup>a</sup> |
|-----------------------------------|----------------------------------|-----------------------------------|-----------------------------------|-----------------------------------|---------------------------------|-----------------------------------|-----------------------------------|-------------------------------------|----------------------|
|                                   | Harbin<br>(N <sub>1</sub> = 398) | Tianjin<br>(N <sub>2</sub> = 416) | Lanzhou<br>(N <sub>3</sub> = 427) | Chengdu<br>(N <sub>4</sub> = 405) | Wuhan<br>(N <sub>5</sub> = 432) | Nanjing<br>(N <sub>6</sub> = 434) | Guiyang<br>(N <sub>7</sub> = 402) | Guangzhou<br>(N <sub>8</sub> = 406) |                      |
| <b>Gender <sup>b</sup></b>        |                                  |                                   |                                   |                                   |                                 |                                   |                                   |                                     | 0.962                |
| Male                              | 203 (51.0%)                      | 198 (47.6%)                       | 219 (51.3%)                       | 208 (51.4%)                       | 213 (49.3%)                     | 219 (50.5%)                       | 206 (51.2%)                       | 204 (50.2%)                         |                      |
| Female                            | 195 (49.0%)                      | 218 (52.4%)                       | 208 (48.7%)                       | 197 (48.6%)                       | 219 (50.7%)                     | 215 (49.5%)                       | 196 (48.8%)                       | 202 (49.8%)                         |                      |
| <b>Age (mean [SD])</b>            | 44.3 (16.2)                      | 45.6 (16.8)                       | 44.3 (16.6)                       | 44.4 (16.1)                       | 44.2 (15.8)                     | 45.2 (15.3)                       | 44.0 (16.5)                       | 44.5 (15.9)                         | 0.676                |
| <b>Age group (y) <sup>b</sup></b> |                                  |                                   |                                   |                                   |                                 |                                   |                                   |                                     | 0.993                |
| 18-29                             | 86 (21.6%)                       | 89 (21.4%)                        | 95 (22.2%)                        | 85 (21.0%)                        | 95 (22.0%)                      | 86 (19.8%)                        | 87 (21.6%)                        | 85 (20.9%)                          |                      |
| 30-39                             | 75 (18.8%)                       | 73 (17.5%)                        | 83 (19.4%)                        | 77 (19.0%)                        | 76 (17.6%)                      | 78 (18.0%)                        | 76 (18.9%)                        | 75 (18.5%)                          |                      |
| 40-49                             | 84 (21.1%)                       | 77 (18.5%)                        | 85 (19.9%)                        | 85 (21.0%)                        | 83 (19.2%)                      | 84 (19.4%)                        | 84 (20.9%)                        | 88 (21.7%)                          |                      |
| 50-59                             | 67 (16.8%)                       | 78 (18.8%)                        | 72 (16.9%)                        | 69 (17.0%)                        | 94 (21.8%)                      | 95 (21.9%)                        | 68 (16.9%)                        | 71 (17.5%)                          |                      |
| ≥ 60                              | 86 (21.6%)                       | 99 (23.8%)                        | 92 (21.5%)                        | 89 (22.0%)                        | 84 (19.4%)                      | 91 (21.0%)                        | 87 (21.6%)                        | 87 (21.4%)                          |                      |
| <b>Education <sup>b</sup></b>     |                                  |                                   |                                   |                                   |                                 |                                   |                                   |                                     | 0.860                |
| Primary or lower                  | 104 (26.1%)                      | 87 (20.9%)                        | 102 (23.9%)                       | 105 (25.9%)                       | 106 (24.5%)                     | 106 (24.4%)                       | 105 (26.1%)                       | 105 (25.9%)                         |                      |
| Junior high school                | 159 (39.9%)                      | 161 (38.7%)                       | 166 (38.9%)                       | 162 (40.0%)                       | 160 (37.0%)                     | 160 (36.9%)                       | 160 (39.8%)                       | 160 (39.4%)                         |                      |
| Senior high school                | 69 (17.3%)                       | 75 (18.0%)                        | 86 (20.1%)                        | 70 (17.3%)                        | 82 (19.0%)                      | 78 (18.0%)                        | 69 (17.2%)                        | 72 (17.7%)                          |                      |
| College or higher                 | 66 (16.6%)                       | 93 (22.4%)                        | 73 (17.1%)                        | 68 (16.8%)                        | 84 (19.4%)                      | 90 (20.7%)                        | 68 (16.9%)                        | 69 (17.0%)                          |                      |
| <b>Region <sup>b</sup></b>        |                                  |                                   |                                   |                                   |                                 |                                   |                                   |                                     | 0.700                |
| Urban                             | 239 (60.1%)                      | 258 (62.0%)                       | 252 (59.0%)                       | 244 (60.2%)                       | 264 (61.1%)                     | 241 (55.5%)                       | 242 (60.2%)                       | 240 (59.1%)                         |                      |
| Rural                             | 159 (39.9%)                      | 158 (38.0%)                       | 175 (41.0%)                       | 161 (39.8%)                       | 168 (38.9%)                     | 193 (44.5%)                       | 160 (39.8%)                       | 166 (40.9%)                         |                      |
| <b>Marital status</b>             |                                  |                                   |                                   |                                   |                                 |                                   |                                   |                                     | <b>0.001</b>         |
| Unmarried                         | 88 (22.1%)                       | 90 (21.6%)                        | 79 (18.5%)                        | 84 (20.7%)                        | 109 (25.2%)                     | 75 (17.3%)                        | 94 (23.4%)                        | 90 (22.2%)                          |                      |
| Married                           | 285 (71.6%)                      | 304 (73.1%)                       | 333 (78.0%)                       | 297 (73.3%)                       | 289 (66.9%)                     | 345 (79.5%)                       | 279 (69.4%)                       | 302 (74.4%)                         |                      |
| Divorced                          | 8 (2.0%)                         | 8 (1.9%)                          | 3 (0.7%)                          | 16 (4.0%)                         | 15 (3.5%)                       | 5 (1.2%)                          | 14 (3.5%)                         | 4 (1.0%)                            |                      |
| Widowed                           | 17 (4.3%)                        | 14 (3.4%)                         | 12 (2.8%)                         | 8 (2.0%)                          | 19 (4.4%)                       | 9 (2.1%)                          | 15 (3.7%)                         | 10 (2.5%)                           |                      |
| <b>Health insurance</b>           |                                  |                                   |                                   |                                   |                                 |                                   |                                   |                                     |                      |
| Urban employee                    | 200 (50.3%)                      | 246 (59.1%)                       | 157 (36.8%)                       | 224 (55.3%)                       | 203 (47.0%)                     | 212 (48.8%)                       | 141 (35.1%)                       | 193 (47.5%)                         | <b>&lt;0.001</b>     |
| Urban and rural resident          | 139 (34.9%)                      | 131 (31.5%)                       | 264 (61.8%)                       | 170 (42.0%)                       | 194 (44.9%)                     | 183 (42.2%)                       | 227 (56.5%)                       | 168 (41.4%)                         | <b>&lt;0.001</b>     |

|  |             |             |             |             |             |             |             |             |        |
|--|-------------|-------------|-------------|-------------|-------------|-------------|-------------|-------------|--------|
| Commercial                                       | 88 (22.1%)  | 69 (16.6%)  | 57 (13.3%)  | 64 (15.8%)  | 50 (11.6%)  | 63 (14.5%)  | 21 (5.2%)   | 37 (9.1%)   | <0.001 |
| Other  | 15 (3.8%)   | 10 (2.4%)   | 3 (0.7%)    | 10 (2.5%)   | 10 (2.3%)   | 7 (1.6%)    | 10 (2.5%)   | 9 (2.2%)    | 0.191  |
| No   | 28 (7.0%)   | 26 (6.3%)   | 5 (1.2%)    | 11 (2.7%)   | 30 (6.9%)   | 22 (5.1%)   | 21 (5.2%)   | 45 (11.1%)  | <0.001 |
| <b>Employment status</b>                         |             |             |             |             |             |             |             |             | <0.001 |
| Employed   | 180 (45.2%) | 236 (56.7%) | 246 (57.6%) | 268 (66.2%) | 316 (73.1%) | 296 (68.2%) | 220 (54.7%) | 281 (69.2%) |        |
| Retired  | 78 (19.6%)  | 121 (29.1%) | 77 (18.0%)  | 65 (16.0%)  | 62 (14.4%)  | 72 (16.6%)  | 63 (15.7%)  | 66 (16.3%)  |        |
| Student  | 38 (9.5%)   | 30 (7.2%)   | 18 (4.2%)   | 21 (5.2%)   | 34 (7.9%)   | 27 (6.2%)   | 32 (8.0%)   | 29 (7.1%)   |        |
| Unemployed                                       | 102 (25.6%) | 29 (7.0%)   | 86 (20.1%)  | 51 (12.6%)  | 20 (4.6%)   | 39 (9.0%)   | 87 (21.6%)  | 30 (7.4%)   |        |
| <b>Monthly income (RMB)</b>                      |             |             |             |             |             |             |             |             | <0.001 |
| < 2000   | 145 (36.4%) | 73 (17.5%)  | 166 (38.9%) | 103 (25.4%) | 82 (19.0%)  | 89 (20.5%)  | 127 (31.6%) | 73 (18.0%)  |        |
| 2000-5000  | 178 (44.7%) | 278 (66.8%) | 210 (49.2%) | 206 (50.9%) | 275 (63.7%) | 224 (51.6%) | 217 (54.0%) | 243 (59.9%) |        |
| 5000-10000                                       | 56 (14.1%)  | 52 (12.5%)  | 40 (9.4%)   | 65 (16.0%)  | 59 (13.7%)  | 91 (21.0%)  | 45 (11.2%)  | 73 (18.0%)  |        |
| >10000   | 19 (4.8%)   | 13 (3.1%)   | 11 (2.6%)   | 31 (7.7%)   | 16 (3.7%)   | 30 (6.9%)   | 13 (3.2%)   | 17 (4.2%)   |        |
| <b>Number of chronic conditions <sup>c</sup></b> |             |             |             |             |             |             |             |             | <0.001 |
| 0  | 213 (53.5%) | 258 (62.0%) | 273 (63.9%) | 224 (55.3%) | 287 (66.4%) | 280 (64.5%) | 243 (60.4%) | 285 (70.2%) |        |
| 1  | 100 (25.1%) | 94 (22.6%)  | 107 (25.1%) | 120 (29.6%) | 112 (25.9%) | 112 (25.8%) | 107 (26.6%) | 79 (19.5%)  |        |
| 2  | 40 (10.1%)  | 35 (8.4%)   | 26 (6.1%)   | 36 (8.9%)   | 27 (6.3%)   | 28 (6.5%)   | 39 (9.7%)   | 34 (8.4%)   |        |
| 3  | 21 (5.3%)   | 22 (5.3%)   | 8 (1.9%)    | 12 (3.0%)   | 5 (1.2%)    | 11 (2.5%)   | 8 (2.0%)    | 6 (1.5%)    |        |
| ≥ 4  | 24 (6.0%)   | 7 (1.7%)    | 13 (3.0%)   | 13 (3.2%)   | 1 (0.2%)    | 3 (0.7%)    | 5 (1.2%)    | 2 (0.5%)    |        |

<sup>a</sup> The comparison of characteristics distributions among respondents in eight cities were conducted by using t-test or chi-square test, as appropriate.

<sup>b</sup> The quota sampling was used in this study, which four quotas, i.e., gender, age, education status, and the region were pre-defined on the basis of their distribution in the Chinese general population.

<sup>c</sup> The chronic conditions include hypertension, dyslipidemia, diabetes or high blood sugar, cancer or malignant tumor, chronic lung disease, liver disease, heart disease, stroke, kidney disease, stomach or other digestive disease, emotional or psychiatric problems, memory-related disease, arthritis or rheumatism, asthma, or other respondent-reported chronic conditions.

**Appendix Table 2 Estimated interaction terms coefficients of the preferred model on TTO data**

|                      | <b>M2: RE model</b>     |       |         |                     |       |         |                    |              |                  |                              |       |         |                     |       |         |                  |    |         |
|----------------------|-------------------------|-------|---------|---------------------|-------|---------|--------------------|--------------|------------------|------------------------------|-------|---------|---------------------|-------|---------|------------------|----|---------|
|                      | <b>Main effect only</b> |       |         | <b>+ LEAST term</b> |       |         | <b>+ MOST term</b> |              |                  | <b>+ LEAST and MOST term</b> |       |         | <b>+ MOSTn term</b> |       |         | <b>+ D1 term</b> |    |         |
|                      | Coef.                   | SE    | p-value | Coef.               | SE    | p-value | Coef.              | SE           | p-value          | Coef.                        | SE    | p-value | Coef.               | SE    | p-value | Coef.            | SE | p-value |
| Intercept            | 0.130                   | 0.005 | <0.001  | 0.058               | 0.009 | <0.001  | 0.128              | 0.005        | <0.001           | 0.063                        | 0.010 | <0.001  | 0.128               | 0.005 | <0.001  |                  |    |         |
| Physical functioning |                         |       |         |                     |       |         |                    |              |                  |                              |       |         |                     |       |         |                  |    |         |
| PF2                  | 0.033                   | 0.007 | <0.001  | 0.045               | 0.007 | <0.001  | 0.032              | 0.007        | <0.001           | 0.044                        | 0.007 | <0.001  | 0.032               | 0.007 | <0.001  |                  |    |         |
| PF3                  | 0.069                   | 0.008 | <0.001  | 0.073               | 0.008 | <0.001  | 0.067              | 0.008        | <0.001           | 0.072                        | 0.008 | <0.001  | 0.067               | 0.008 | <0.001  |                  |    |         |
| PF4                  | 0.122                   | 0.008 | <0.001  | 0.130               | 0.008 | <0.001  | 0.120              | 0.008        | <0.001           | 0.128                        | 0.008 | <0.001  | 0.120               | 0.008 | <0.001  |                  |    |         |
| PF5                  | 0.344                   | 0.010 | <0.001  | 0.353               | 0.010 | <0.001  | 0.339              | 0.010        | <0.001           | 0.350                        | 0.010 | <0.001  | 0.365               | 0.012 | <0.001  |                  |    |         |
| Role limitation      |                         |       |         |                     |       |         |                    |              |                  |                              |       |         |                     |       |         |                  |    |         |
| RL2                  | 0.044                   | 0.007 | <0.001  | 0.053               | 0.007 | <0.001  | 0.040              | 0.007        | <0.001           | 0.050                        | 0.008 | <0.001  | 0.040               | 0.007 | <0.001  |                  |    |         |
| RL3                  | 0.052                   | 0.009 | <0.001  | 0.056               | 0.009 | <0.001  | 0.046              | 0.009        | <0.001           | 0.053                        | 0.009 | <0.001  | 0.046               | 0.009 | <0.001  |                  |    |         |
| RL4                  | 0.083                   | 0.008 | <0.001  | 0.093               | 0.008 | <0.001  | <b>0.079</b>       | <b>0.008</b> | <b>&lt;0.001</b> | 0.091                        | 0.008 | <0.001  | 0.079               | 0.008 | <0.001  |                  |    |         |
| RL5                  | 0.084                   | 0.008 | <0.001  | 0.096               | 0.008 | <0.001  | <b>0.077</b>       | <b>0.008</b> | <b>&lt;0.001</b> | 0.092                        | 0.008 | <0.001  | 0.104               | 0.009 | <0.001  |                  |    |         |
| Social functioning   |                         |       |         |                     |       |         |                    |              |                  |                              |       |         |                     |       |         |                  |    |         |
| SF2                  | 0.041                   | 0.008 | <0.001  | 0.048               | 0.008 | <0.001  | 0.038              | 0.008        | <0.001           | 0.046                        | 0.008 | <0.001  | 0.038               | 0.008 | <0.001  |                  |    |         |
| SF3                  | 0.052                   | 0.008 | <0.001  | 0.062               | 0.008 | <0.001  | 0.050              | 0.008        | <0.001           | 0.060                        | 0.008 | <0.001  | 0.050               | 0.008 | <0.001  |                  |    |         |
| SF4                  | 0.081                   | 0.008 | <0.001  | 0.085               | 0.008 | <0.001  | 0.081              | 0.008        | <0.001           | 0.085                        | 0.008 | <0.001  | 0.081               | 0.008 | <0.001  |                  |    |         |
| SF5                  | 0.094                   | 0.008 | <0.001  | 0.106               | 0.008 | <0.001  | 0.089              | 0.008        | <0.001           | 0.103                        | 0.009 | <0.001  | 0.115               | 0.009 | <0.001  |                  |    |         |
| Pain                 |                         |       |         |                     |       |         |                    |              |                  |                              |       |         |                     |       |         |                  |    |         |
| PN2                  | 0.041                   | 0.008 | <0.001  | 0.047               | 0.008 | <0.001  | 0.039              | 0.008        | <0.001           | 0.046                        | 0.008 | <0.001  | 0.039               | 0.008 | <0.001  |                  |    |         |
| PN3                  | 0.072                   | 0.009 | <0.001  | 0.081               | 0.009 | <0.001  | 0.067              | 0.009        | <0.001           | 0.079                        | 0.009 | <0.001  | 0.067               | 0.009 | <0.001  |                  |    |         |
| PN4                  | 0.134                   | 0.009 | <0.001  | 0.135               | 0.009 | <0.001  | 0.131              | 0.009        | <0.001           | 0.134                        | 0.009 | <0.001  | 0.131               | 0.009 | <0.001  |                  |    |         |
| PN5                  | 0.338                   | 0.010 | <0.001  | 0.341               | 0.010 | <0.001  | 0.335              | 0.010        | <0.001           | 0.339                        | 0.010 | <0.001  | 0.335               | 0.010 | <0.001  |                  |    |         |
| PN6                  | 0.372                   | 0.010 | <0.001  | 0.382               | 0.010 | <0.001  | 0.367              | 0.010        | <0.001           | 0.379                        | 0.010 | <0.001  | 0.393               | 0.012 | <0.001  |                  |    |         |
| Mental health        |                         |       |         |                     |       |         |                    |              |                  |                              |       |         |                     |       |         |                  |    |         |
| MH2                  | 0.028                   | 0.008 | <0.001  | 0.037               | 0.008 | <0.001  | 0.027              | 0.008        | <0.001           | 0.035                        | 0.008 | <0.001  | 0.027               | 0.008 | <0.001  |                  |    |         |
| MH3                  | 0.043                   | 0.009 | <0.001  | 0.050               | 0.009 | <0.001  | 0.041              | 0.009        | <0.001           | 0.049                        | 0.009 | <0.001  | 0.041               | 0.009 | <0.001  |                  |    |         |
| MH4                  | 0.115                   | 0.008 | <0.001  | 0.121               | 0.009 | <0.001  | <b>0.115</b>       | <b>0.008</b> | <b>&lt;0.001</b> | 0.120                        | 0.008 | <0.001  | 0.115               | 0.008 | <0.001  |                  |    |         |

Omitted

|          |          |       |        |              |              |                  |              |              |                  |              |              |                  |          |       |        |    |
|----------|----------|-------|--------|--------------|--------------|------------------|--------------|--------------|------------------|--------------|--------------|------------------|----------|-------|--------|----|
| MH5      | 0.116    | 0.009 | <0.001 | 0.129        | 0.008        | <0.001           | <b>0.111</b> | <b>0.008</b> | <b>&lt;0.001</b> | 0.126        | 0.008        | <0.001           | 0.137    | 0.010 | <0.001 |    |
| Vitality |          |       |        |              |              |                  |              |              |                  |              |              |                  |          |       |        |    |
| VT2      | 0.025    | 0.007 | <0.001 | 0.033        | 0.007        | <0.001           | 0.025        | 0.007        | <0.001           | 0.032        | 0.007        | <0.001           | 0.025    | 0.007 | <0.001 |    |
| VT3      | 0.053    | 0.008 | <0.001 | 0.061        | 0.008        | <0.001           | 0.050        | 0.008        | <0.001           | 0.059        | 0.008        | <0.001           | 0.050    | 0.008 | <0.001 |    |
| VT4      | 0.094    | 0.008 | <0.001 | 0.099        | 0.008        | <0.001           | 0.092        | 0.008        | <0.001           | 0.098        | 0.008        | <0.001           | 0.092    | 0.008 | <0.001 |    |
| VT5      | 0.101    | 0.008 | <0.001 | 0.111        | 0.008        | <0.001           | 0.096        | 0.008        | <0.001           | 0.108        | 0.008        | <0.001           | 0.122    | 0.010 | <0.001 |    |
| LEAST    | --       | --    | --     | <b>0.051</b> | <b>0.007</b> | <b>&lt;0.001</b> | --           | --           | --               | <b>0.047</b> | <b>0.007</b> | <b>&lt;0.001</b> | --       | --    | --     |    |
| MOST     | --       | --    | --     | --           | --           | --               | 0.026        | 0.007        | <0.001           | <b>0.011</b> | <b>0.007</b> | <b>0.157</b>     | --       | --    | --     |    |
| MOSTn    | --       | --    | --     | --           | --           | --               | --           | --           | --               | --           | --           | --               | -0.026   | 0.007 | <0.001 |    |
| D1       | --       | --    | --     | --           | --           | --               | --           | --           | --               | --           | --           | --               | --       | --    | --     |    |
| AIC      | 29479.69 |       |        | 29433.79     |              |                  | 29487.51     |              |                  | 29433.76     |              |                  | 29467.51 |       |        | -- |
| BIC      | 29708.93 |       |        | 29671.21     |              |                  | 29714.94     |              |                  | 29679.37     |              |                  | 29704.94 |       |        | -- |
| MAD      | 0.0616   |       |        | 0.0598       |              |                  | 0.0618       |              |                  | 0.0593       |              |                  | 0.0604   |       |        | -- |
| MSD      | 0.0063   |       |        | 0.0061       |              |                  | 0.0064       |              |                  | 0.0060       |              |                  | 0.0062   |       |        | -- |
| ICC      | 0.9307   |       |        | 0.9332       |              |                  | 0.9308       |              |                  | 0.9339       |              |                  | 0.9328   |       |        | -- |

Abbr: RE, random-effects; LEAST term, represents the dummy variable which take a value of 1 if any dimension in the health state is at the least severe level, and 0 otherwise; MOST term, represents the dummy variable which take a value of 1 if any dimension in the health state is at the most severe level, and 0 otherwise; MOSTn term, represents the count variable represent the number of dimensions at the most severe level beyond the first, value ranges from 0 to 5; D1 term, represents the number of domains isn't at the least severe level beyond the first, value ranges from 0 to 5; AIC, akaike information criterion; BIC, bayesian information criterion; MAD, mean absolute difference; MSE, mean squared difference; ICC, intraclass correlation coefficient.

D1 term was omitted due to the multicollinearity. The coefficients marked with red color represented the non-monotonicity.

**Appendix Table 3 Estimated interaction terms coefficients of the preferred model on DCE<sub>TO</sub> data**

|                           | Conditional logit model |              |              |              |              |              |               |              |                  |                       |              |              |              |              |              |           |    |                |
|---------------------------|-------------------------|--------------|--------------|--------------|--------------|--------------|---------------|--------------|------------------|-----------------------|--------------|--------------|--------------|--------------|--------------|-----------|----|----------------|
|                           | Main effects only       |              |              | + LEAST term |              |              | + MOST term   |              |                  | + LEAST and MOST term |              |              | + MOSTn term |              |              | + D1 term |    |                |
|                           | Coef.                   | SE           | p-value      | Coef.        | SE           | p-value      | Coef.         | SE           | p-value          | Coef.                 | SE           | p-value      | Coef.        | SE           | p-value      | Coef.     | SE | p-value        |
| Year                      | 0.365                   | 0.009        | <0.001       | 0.332        | 0.011        | <0.001       | 0.398         | 0.010        | <0.001           | 0.352                 | 0.016        | <0.001       | 0.370        | 0.009        | <0.001       |           |    |                |
| Physical functioning*Year |                         |              |              |              |              |              |               |              |                  |                       |              |              |              |              |              |           |    |                |
| PF2                       | -0.009                  | 0.005        | 0.052        | <b>0.002</b> | <b>0.005</b> | <b>0.649</b> | -0.012        | 0.005        | 0.019            | -0.004                | 0.005        | 0.420        | -0.010       | 0.005        | 0.051        |           |    |                |
| PF3                       | -0.018                  | 0.005        | <0.001       | -0.012       | 0.005        | 0.007        | -0.017        | 0.005        | <0.001           | -0.011                | 0.005        | 0.021        | -0.019       | 0.005        | <0.001       |           |    |                |
| PF4                       | -0.054                  | 0.005        | <0.001       | -0.047       | 0.005        | <0.001       | -0.054        | 0.005        | <0.001           | -0.047                | 0.005        | <0.001       | -0.054       | 0.005        | <0.001       |           |    |                |
| PF5                       | -0.150                  | 0.005        | <0.001       | -0.143       | 0.005        | <0.001       | -0.128        | 0.005        | <0.001           | -0.122                | 0.006        | <0.001       | -0.157       | 0.006        | <0.001       |           |    |                |
| Role functioning*Year     |                         |              |              |              |              |              |               |              |                  |                       |              |              |              |              |              |           |    |                |
| RL2                       | -0.011                  | 0.004        | 0.010        | -0.005       | 0.004        | 0.262        | -0.014        | 0.004        | 0.001            | -0.008                | 0.004        | 0.076        | -0.012       | 0.004        | 0.007        |           |    |                |
| RL3                       | -0.011                  | 0.005        | 0.017        | -0.005       | 0.005        | 0.266        | <b>0.004</b>  | <b>0.005</b> | <b>0.381</b>     | <b>0.010</b>          | <b>0.005</b> | <b>0.038</b> | -0.013       | 0.005        | 0.008        |           |    |                |
| RL4                       | -0.030                  | 0.004        | <0.001       | -0.024       | 0.004        | <0.001       | -0.034        | 0.004        | <0.001           | -0.028                | 0.005        | <0.001       | -0.031       | 0.004        | <0.001       |           |    |                |
| RL5                       | -0.041                  | 0.005        | <0.001       | -0.033       | 0.005        | <0.001       | -0.044        | 0.005        | <0.001           | -0.037                | 0.005        | <0.001       | -0.050       | 0.006        | <0.001       |           |    |                |
| Social functioning*Year   |                         |              |              |              |              |              |               |              |                  |                       |              |              |              |              |              |           |    |                |
| SF2                       | -0.013                  | 0.005        | 0.004        | -0.007       | 0.005        | 0.158        | -0.017        | 0.005        | <0.001           | -0.010                | 0.005        | 0.041        | -0.014       | 0.005        | 0.003        |           |    |                |
| SF3                       | -0.014                  | 0.004        | 0.001        | -0.008       | 0.005        | 0.086        | -0.022        | 0.005        | <0.001           | -0.016                | 0.005        | 0.001        | -0.014       | 0.004        | 0.001        |           |    | <b>Omitted</b> |
| SF4                       | -0.039                  | 0.004        | <0.001       | -0.033       | 0.005        | <0.001       | -0.046        | 0.004        | <0.001           | -0.040                | 0.005        | <0.001       | -0.039       | 0.004        | <0.001       |           |    |                |
| SF5                       | -0.042                  | 0.004        | <0.001       | -0.036       | 0.004        | <0.001       | <b>-0.027</b> | <b>0.004</b> | <b>&lt;0.001</b> | -0.020                | 0.005        | <0.001       | -0.050       | 0.005        | <0.001       |           |    |                |
| Pain*Year                 |                         |              |              |              |              |              |               |              |                  |                       |              |              |              |              |              |           |    |                |
| PN2                       | -0.027                  | 0.005        | <0.001       | -0.019       | 0.006        | 0.001        | -0.024        | 0.005        | <0.001           | -0.017                | 0.006        | 0.003        | -0.026       | 0.005        | <0.001       |           |    |                |
| PN3                       | -0.029                  | 0.005        | <0.001       | -0.022       | 0.005        | <0.001       | -0.029        | 0.005        | <0.001           | -0.021                | 0.006        | <0.001       | -0.029       | 0.005        | <0.001       |           |    |                |
| PN4                       | -0.057                  | 0.005        | <0.001       | -0.050       | 0.005        | <0.001       | -0.057        | 0.005        | <0.001           | -0.049                | 0.005        | <0.001       | -0.058       | 0.005        | <0.001       |           |    |                |
| PN5                       | -0.173                  | 0.006        | <0.001       | -0.166       | 0.006        | <0.001       | -0.169        | 0.006        | <0.001           | -0.162                | 0.006        | <0.001       | -0.173       | 0.006        | <0.001       |           |    |                |
| PN6                       | -0.200                  | 0.005        | <0.001       | -0.194       | 0.006        | <0.001       | -0.179        | 0.006        | <0.001           | -0.173                | 0.006        | <0.001       | -0.208       | 0.006        | <0.001       |           |    |                |
| Mental health*Year        |                         |              |              |              |              |              |               |              |                  |                       |              |              |              |              |              |           |    |                |
| MH2                       | <b>0.002</b>            | <b>0.004</b> | <b>0.686</b> | <b>0.010</b> | <b>0.005</b> | <b>0.028</b> | -0.001        | 0.004        | 0.910            | <b>0.009</b>          | <b>0.005</b> | <b>0.091</b> | <b>0.002</b> | <b>0.004</b> | <b>0.696</b> |           |    |                |
| MH3                       | -0.003                  | 0.004        | 0.568        | <b>0.005</b> | <b>0.005</b> | <b>0.313</b> | -0.005        | 0.005        | 0.240            | <b>0.003</b>          | <b>0.005</b> | <b>0.530</b> | -0.003       | 0.004        | 0.498        |           |    |                |
| MH4                       | -0.053                  | 0.005        | <0.001       | -0.046       | 0.005        | <0.001       | -0.058        | 0.005        | <0.001           | -0.050                | 0.005        | <0.001       | -0.053       | 0.005        | <0.001       |           |    |                |

|                |              |              |              |              |              |              |               |              |                  |               |              |                  |              |              |              |    |
|----------------|--------------|--------------|--------------|--------------|--------------|--------------|---------------|--------------|------------------|---------------|--------------|------------------|--------------|--------------|--------------|----|
| MH5            | -0.072       | 0.005        | <0.001       | -0.064       | 0.005        | <0.001       | -0.058        | 0.005        | <0.001           | -0.051        | 0.005        | <0.001           | -0.080       | 0.006        | <0.001       |    |
| Vitality*Year  |              |              |              |              |              |              |               |              |                  |               |              |                  |              |              |              |    |
| VT2            | <b>0.007</b> | <b>0.005</b> | <b>0.145</b> | <b>0.013</b> | <b>0.005</b> | <b>0.010</b> | <b>0.008</b>  | <b>0.005</b> | <b>0.098</b>     | <b>0.014</b>  | <b>0.005</b> | <b>0.007</b>     | <b>0.007</b> | <b>0.005</b> | <b>0.125</b> |    |
| VT3            | -0.027       | 0.005        | <0.001       | -0.021       | 0.005        | <0.001       | <b>-0.025</b> | <b>0.005</b> | <b>&lt;0.001</b> | -0.019        | 0.005        | <0.001           | -0.027       | 0.005        | <0.001       |    |
| VT4            | -0.029       | 0.005        | <0.001       | -0.023       | 0.005        | <0.001       | <b>-0.024</b> | <b>0.005</b> | <b>&lt;0.001</b> | <b>-0.019</b> | <b>0.005</b> | <b>&lt;0.001</b> | -0.029       | 0.005        | <0.001       |    |
| VT5            | -0.058       | 0.005        | <0.001       | -0.051       | 0.005        | <0.001       | -0.037        | 0.005        | <0.001           | -0.030        | 0.006        | <0.001           | -0.066       | 0.006        | <0.001       |    |
| LEAST*Year     | --           | --           | --           | 0.122        | 0.023        | <0.001       | --            | --           | --               | 0.017         | 0.005        | <0.001           | --           | --           | --           |    |
| MOST*Year      | --           | --           | --           | --           | --           | --           | -0.062        | 0.005        | <0.001           | -0.062        | 0.005        | <0.001           | --           | --           | --           |    |
| MOSTn*Year     | --           | --           | --           | --           | --           | --           | --            | --           | --               | --            | --           | --               | 0.012        | 0.005        | 0.012        |    |
| D1*Year        | --           | --           | --           | --           | --           | --           | --            | --           | --               | --            | --           | --               | --           | --           | --           |    |
| Log likelihood | -35563.72    |              |              | -35551.69    |              |              | -35479.79     |              |                  | -35473.41     |              |                  | -35560.76    |              |              | -- |
| AIC            | 71179.45     |              |              | 71157.38     |              |              | 71013.57      |              |                  | 71002.83      |              |                  | 71175.52     |              |              | -- |
| BIC            | 71416.13     |              |              | 71403.17     |              |              | 71259.36      |              |                  | 71257.72      |              |                  | 71421.32     |              |              | -- |

Abbr: LEAST term, represents the dummy variable which take a value of 1 if any dimension in the health state is at the least severe level, and 0 otherwise; MOST term, represents the dummy variable which take a value of 1 if any dimension in the health state is at the most severe level, and 0 otherwise; MOSTn term, represents the count variable represent the number of dimensions at the most severe level beyond the first, value ranges from 0 to 5; D1 term, represents the number of domains isn't at the least severe level beyond the first, value ranges from 0 to 5; AIC, akaike information criterion; BIC, bayesian information criterion.

D1 term was omitted due to the multicollinearity. The coefficients marked with red color represented the non-monotonicity.

**Appendix Table 4 The TTO cross-validation results of excluding the data of each one of the eight cities**

|                      | dropped data<br>from city 1<br>(Harbin) |         | dropped data<br>from city 2<br>(Tianjin) |         | dropped data<br>from city 3<br>(Lanzhou) |         | dropped data<br>from city 4<br>(Chengdu) |         | dropped data<br>from city 5<br>(Wuhan) |         | dropped data<br>from city 6<br>(Nanjing) |         | dropped data<br>from city 7<br>(Guiyang) |         | dropped data<br>from city 8<br>(Guangzhou) |         |
|----------------------|---|---------|--|---------|--|---------|--|---------|--|---------|--|---------|--|---------|--|---------|
|                      | Coef.                                   | p-value | Coef.                                    | p-value | Coef.                                    | p-value | Coef.                                    | p-value | Coef.                                  | p-value | Coef.                                    | p-value | Coef.                                    | p-value | Coef.                                      | p-value |
|                      | Intercept                               | -0.134  | <0.001                                   | -0.131  | <0.001                                   | -0.123  | <0.001                                   | -0.131  | <0.001                                 | -0.131  | <0.001                                   | -0.132  | <0.001                                   | -0.132  | <0.001                                     | -0.124  |
| Physical functioning |   |         |  |         |  |         |  |         |  |         |  |         |  |         |  |         |
| PF2                  | -0.031                                  | <0.001  | -0.035                                   | <0.001  | -0.031                                   | <0.001  | -0.036                                   | <0.001  | -0.034                                 | <0.001  | -0.032                                   | <0.001  | -0.033                                   | <0.001  | -0.035                                     | <0.001  |
| PF3                  | -0.063                                  | <0.001  | -0.068                                   | <0.001  | -0.065                                   | <0.001  | -0.073                                   | <0.001  | -0.071                                 | <0.001  | -0.066                                   | <0.001  | -0.073                                   | <0.001  | -0.074                                     | <0.001  |
| PF4                  | -0.116                                  | <0.001  | -0.124                                   | <0.001  | -0.120                                   | <0.001  | -0.132                                   | <0.001  | -0.121                                 | <0.001  | -0.119                                   | <0.001  | -0.127                                   | <0.001  | -0.119                                     | <0.001  |
| PF5                  | -0.333                                  | <0.001  | -0.338                                   | <0.001  | -0.347                                   | <0.001  | -0.353                                   | <0.001  | -0.345                                 | <0.001  | -0.335                                   | <0.001  | -0.355                                   | <0.001  | -0.344                                     | <0.001  |
| Role limitation      |   |         |  |         |  |         |  |         |  |         |  |         |  |         |  |         |
| RL2                  | -0.041                                  | <0.001  | -0.045                                   | <0.001  | -0.044                                   | <0.001  | -0.038                                   | <0.001  | -0.041                                 | <0.001  | -0.044                                   | <0.001  | -0.048                                   | <0.001  | -0.048                                     | <0.001  |
| RL3                  | -0.053                                  | <0.001  | -0.058                                   | <0.001  | -0.052                                   | <0.001  | -0.051                                   | <0.001  | -0.054                                 | <0.001  | -0.046                                   | <0.001  | -0.051                                   | <0.001  | -0.048                                     | <0.001  |
| RL4                  | -0.082                                  | <0.001  | -0.087                                   | <0.001  | -0.081                                   | <0.001  | -0.080                                   | <0.001  | -0.086                                 | <0.001  | -0.081                                   | <0.001  | -0.086                                   | <0.001  | -0.085                                     | <0.001  |
| RL5                  | -0.085                                  | <0.001  | -0.081                                   | <0.001  | -0.092                                   | <0.001  | -0.081                                   | <0.001  | -0.087                                 | <0.001  | -0.087                                   | <0.001  | -0.077                                   | <0.001  | -0.085                                     | <0.001  |
| Social functioning   |   |         |  |         |  |         |  |         |  |         |  |         |  |         |  |         |
| SF2                  | -0.041                                  | <0.001  | -0.045                                   | <0.001  | -0.034                                   | <0.001  | -0.043                                   | <0.001  | -0.043                                 | <0.001  | -0.041                                   | <0.001  | -0.040                                   | <0.001  | -0.041                                     | <0.001  |
| SF3                  | -0.054                                  | <0.001  | -0.052                                   | <0.001  | -0.051                                   | <0.001  | -0.053                                   | <0.001  | -0.055                                 | <0.001  | -0.052                                   | <0.001  | -0.051                                   | <0.001  | -0.051                                     | <0.001  |
| SF4                  | -0.079                                  | <0.001  | -0.084                                   | <0.001  | -0.077                                   | <0.001  | -0.081                                   | <0.001  | -0.087                                 | <0.001  | -0.077                                   | <0.001  | -0.083                                   | <0.001  | -0.082                                     | <0.001  |
| SF5                  | -0.093                                  | <0.001  | -0.096                                   | <0.001  | -0.088                                   | <0.001  | -0.096                                   | <0.001  | -0.099                                 | <0.001  | -0.092                                   | <0.001  | -0.092                                   | <0.001  | -0.096                                     | <0.001  |
| Pain                 |   |         |  |         |  |         |  |         |  |         |  |         |  |         |  |         |
| PN2                  | -0.035                                  | <0.001  | -0.039                                   | <0.001  | -0.041                                   | <0.001  | -0.041                                   | <0.001  | -0.042                                 | <0.001  | -0.044                                   | <0.001  | -0.044                                   | <0.001  | -0.043                                     | <0.001  |
| PN3                  | -0.069                                  | <0.001  | -0.066                                   | <0.001  | -0.071                                   | <0.001  | -0.071                                   | <0.001  | -0.068                                 | <0.001  | -0.083                                   | <0.001  | -0.078                                   | <0.001  | -0.071                                     | <0.001  |
| PN4                  | -0.133                                  | <0.001  | -0.131                                   | <0.001  | -0.136                                   | <0.001  | -0.136                                   | <0.001  | -0.131                                 | <0.001  | -0.130                                   | <0.001  | -0.144                                   | <0.001  | -0.133                                     | <0.001  |
| PN5                  | -0.337                                  | <0.001  | -0.335                                   | <0.001  | -0.339                                   | <0.001  | -0.327                                   | <0.001  | -0.343                                 | <0.001  | -0.338                                   | <0.001  | -0.353                                   | <0.001  | -0.330                                     | <0.001  |



|  |        |        |        |        |        |        |        |        |        |        |        |        |        |        |        |        |
|--|--------|--------|--------|--------|--------|--------|--------|--------|--------|--------|--------|--------|--------|--------|--------|--------|
| PN6  | -0.374 | <0.001 | -0.381 | <0.001 | -0.366 | <0.001 | -0.361 | <0.001 | -0.379 | <0.001 | -0.376 | <0.001 | -0.375 | <0.001 | -0.363 | <0.001 |
| Mental health  |        |        |        |        |        |        |        |        |        |        |        |        |        |        |        |        |
| MH2  | -0.026 | 0.001  | -0.026 | 0.001  | -0.030 | <0.001 | -0.026 | 0.001  | -0.032 | <0.001 | -0.027 | 0.001  | -0.026 | 0.002  | -0.033 | <0.001 |
| MH3  | -0.038 | <0.001 | -0.038 | <0.001 | -0.051 | <0.001 | -0.042 | <0.001 | -0.043 | <0.001 | -0.043 | <0.001 | -0.045 | <0.001 | -0.048 | <0.001 |
| MH4  | -0.117 | <0.001 | -0.118 | <0.001 | -0.120 | <0.001 | -0.113 | <0.001 | -0.112 | <0.001 | -0.112 | <0.001 | -0.115 | <0.001 | -0.120 | <0.001 |
| MH5  | -0.115 | <0.001 | -0.113 | <0.001 | -0.121 | <0.001 | -0.107 | <0.001 | -0.114 | <0.001 | -0.116 | <0.001 | -0.116 | <0.001 | -0.120 | <0.001 |
| Vitality   |        |        |        |        |        |        |        |        |        |        |        |        |        |        |        |        |
| VT2  | -0.027 | <0.001 | -0.025 | 0.001  | -0.023 | 0.002  | -0.025 | 0.001  | -0.028 | <0.001 | -0.027 | <0.001 | -0.025 | 0.001  | -0.024 | 0.001  |
| VT3  | -0.054 | <0.001 | -0.052 | <0.001 | -0.047 | <0.001 | -0.055 | <0.001 | -0.055 | <0.001 | -0.053 | <0.001 | -0.056 | <0.001 | -0.048 | <0.001 |
| VT4  | -0.090 | <0.001 | -0.089 | <0.001 | -0.093 | <0.001 | -0.094 | <0.001 | -0.096 | <0.001 | -0.100 | <0.001 | -0.095 | <0.001 | -0.094 | <0.001 |
| VT5  | -0.098 | <0.001 | -0.104 | <0.001 | -0.098 | <0.001 | -0.099 | <0.001 | -0.106 | <0.001 | -0.104 | <0.001 | -0.101 | <0.001 | -0.099 | <0.001 |
| Mean absolute difference of coefficients between the cross-validation model and the whole sample model |        |        |        |        |        |        |        |        |        |        |        |        |        |        |        |        |
|  | 0.0024 |        | 0.0025 |        | 0.0028 |        | 0.0029 |        | 0.0023 |        | 0.0023 |        | 0.0027 |        | 0.0024 |        |

**Appendix Table 5 The DCE<sub>TO</sub> cross-validation results of excluding the data of each one of the eight cities**

|                           | dropped data<br>from city 1<br>(Harbin) |         | dropped data<br>from city 2<br>(Tianjin) |         | dropped data<br>from city 3<br>(Lanzhou) |         | dropped data<br>from city 4<br>(Chengdu) |         | dropped data<br>from city 5<br>(Wuhan) |         | dropped data<br>from city 6<br>(Nanjing) |         | dropped data<br>from city 7<br>(Guiyang) |         | dropped data<br>from city 8<br>(Guangzhou) |         |
|---------------------------|---|---------|--|---------|--|---------|--|---------|--|---------|--|---------|--|---------|--|---------|
|                           | Coef.                                   | p-value | Coef.                                    | p-value | Coef.                                    | p-value | Coef.                                    | p-value | Coef.                                  | p-value | Coef.                                    | p-value | Coef.                                    | p-value | Coef.                                      | p-value |
|                           | Year                                    | 0.358   | 0.000                                    | 0.370   | 0.000                                    | 0.374   | 0.000                                    | 0.358   | 0.000                                  | 0.373   | 0.000                                    | 0.368   | 0.000                                    | 0.357   | 0.000                                      | 0.365   |
| Physical functioning*Year |   |         |  |         |  |         |  |         |  |         |  |         |  |         |  |         |
| PF2                       | -0.008                                  | 0.119   | -0.011                                   | 0.034   | -0.007                                   | 0.168   | -0.010                                   | 0.060   | -0.012                                 | 0.018   | -0.010                                   | 0.053   | -0.008                                   | 0.108   | -0.009                                     | 0.087   |
| PF3                       | -0.017                                  | <0.001  | -0.018                                   | 0.000   | -0.015                                   | 0.002   | -0.018                                   | 0.000   | -0.020                                 | 0.000   | -0.019                                   | 0.000   | -0.019                                   | 0.000   | -0.019                                     | 0.000   |
| PF4                       | -0.049                                  | <0.001  | -0.053                                   | 0.000   | -0.054                                   | 0.000   | -0.053                                   | 0.000   | -0.058                                 | 0.000   | -0.054                                   | 0.000   | -0.055                                   | 0.000   | -0.053                                     | 0.000   |
| PF5                       | -0.144                                  | <0.001  | -0.147                                   | 0.000   | -0.150                                   | 0.000   | -0.149                                   | 0.000   | -0.153                                 | 0.000   | -0.152                                   | 0.000   | -0.152                                   | 0.000   | -0.152                                     | 0.000   |
| Role limitation*Year      |   |         |  |         |  |         |  |         |  |         |  |         |  |         |  |         |
| RL2                       | -0.012                                  | 0.008   | -0.009                                   | 0.061   | -0.013                                   | 0.004   | -0.012                                   | 0.007   | -0.012                                 | 0.012   | -0.010                                   | 0.028   | -0.009                                   | 0.050   | -0.011                                     | 0.017   |
| RL3                       | -0.011                                  | 0.026   | -0.010                                   | 0.049   | -0.013                                   | 0.015   | -0.014                                   | 0.006   | -0.011                                 | 0.031   | -0.014                                   | 0.007   | -0.009                                   | 0.068   | -0.009                                     | 0.081   |
| RL4                       | -0.031                                  | <0.001  | -0.030                                   | <0.001  | -0.031                                   | <0.001  | -0.033                                   | <0.001  | -0.029                                 | <0.001  | -0.030                                   | <0.001  | -0.028                                   | <0.001  | -0.028                                     | <0.001  |
| RL5                       | -0.042                                  | <0.001  | -0.043                                   | <0.001  | -0.041                                   | <0.001  | -0.040                                   | <0.001  | -0.041                                 | <0.001  | -0.042                                   | <0.001  | -0.039                                   | <0.001  | -0.039                                     | <0.001  |
| Social functioning*Year   |   |         |  |         |  |         |  |         |  |         |  |         |  |         |  |         |
| SF2                       | -0.012                                  | 0.015   | -0.015                                   | 0.002   | -0.012                                   | 0.016   | -0.013                                   | 0.007   | -0.013                                 | 0.009   | -0.014                                   | 0.005   | -0.013                                   | 0.007   | -0.015                                     | 0.002   |
| SF3                       | -0.013                                  | 0.006   | -0.016                                   | 0.001   | -0.015                                   | 0.002   | -0.012                                   | 0.011   | -0.013                                 | 0.009   | -0.013                                   | 0.006   | -0.016                                   | 0.001   | -0.016                                     | 0.001   |
| SF4                       | -0.040                                  | <0.001  | -0.038                                   | <0.001  | -0.035                                   | <0.001  | -0.039                                   | <0.001  | -0.040                                 | <0.001  | -0.040                                   | <0.001  | -0.040                                   | <0.001  | -0.040                                     | <0.001  |
| SF5                       | -0.041                                  | <0.001  | -0.042                                   | <0.001  | -0.040                                   | <0.001  | -0.041                                   | <0.001  | -0.044                                 | <0.001  | -0.042                                   | <0.001  | -0.043                                   | <0.001  | -0.044                                     | <0.001  |
| Pain*Year                 |   |         |  |         |  |         |  |         |  |         |  |         |  |         |  |         |
| PN2                       | -0.026                                  | <0.001  | -0.026                                   | <0.001  | -0.031                                   | <0.001  | -0.027                                   | <0.001  | -0.026                                 | <0.001  | -0.026                                   | <0.001  | -0.026                                   | <0.001  | -0.024                                     | <0.001  |
| PN3                       | -0.027                                  | <0.001  | -0.030                                   | <0.001  | -0.031                                   | <0.001  | -0.030                                   | <0.001  | -0.030                                 | <0.001  | -0.030                                   | <0.001  | -0.027                                   | <0.001  | -0.030                                     | <0.001  |
| PN4                       | -0.060                                  | <0.001  | -0.055                                   | <0.001  | -0.059                                   | <0.001  | -0.057                                   | <0.001  | -0.061                                 | <0.001  | -0.057                                   | <0.001  | -0.056                                   | <0.001  | -0.054                                     | <0.001  |
| PN5                       | -0.176                                  | <0.001  | -0.175                                   | <0.001  | -0.174                                   | <0.001  | -0.170                                   | <0.001  | -0.174                                 | <0.001  | -0.173                                   | <0.001  | -0.175                                   | <0.001  | -0.168                                     | <0.001  |

|                            |        |        |        |        |        |        |        |        |        |        |        |        |        |        |        |        |
|----------------------------|--------|--------|--------|--------|--------|--------|--------|--------|--------|--------|--------|--------|--------|--------|--------|--------|
| PN6                        | -0.200 | <0.001 | -0.203 | <0.001 | -0.201 | <0.001 | -0.195 | <0.001 | -0.203 | <0.001 | -0.202 | <0.001 | -0.198 | <0.001 | -0.199 | <0.001 |
| Mental health*Year         |        |        |        |        |        |        |        |        |        |        |        |        |        |        |        |        |
| MH2                        | 0.004  | 0.391  | 0.002  | 0.609  | 0.002  | 0.669  | -0.002 | 0.693  | 0.003  | 0.534  | 0.002  | 0.673  | 0.003  | 0.505  | 0.000  | 0.926  |
| MH3                        | 0.000  | 0.980  | -0.005 | 0.341  | -0.005 | 0.263  | 0.000  | 0.927  | -0.001 | 0.833  | -0.003 | 0.590  | -0.001 | 0.758  | -0.005 | 0.268  |
| MH4                        | -0.049 | <0.001 | -0.053 | <0.001 | -0.054 | <0.001 | -0.050 | <0.001 | -0.054 | <0.001 | -0.055 | <0.001 | -0.054 | <0.001 | -0.056 | <0.001 |
| MH5                        | -0.072 | <0.001 | -0.070 | <0.001 | -0.072 | <0.001 | -0.068 | <0.001 | -0.072 | <0.001 | -0.075 | <0.001 | -0.073 | <0.001 | -0.073 | <0.001 |
| Vitality*Year              |        |        |        |        |        |        |        |        |        |        |        |        |        |        |        |        |
| VT2                        | 0.009  | 0.096  | 0.007  | 0.195  | 0.006  | 0.257  | 0.008  | 0.111  | 0.006  | 0.266  | 0.005  | 0.351  | 0.011  | 0.035  | 0.006  | 0.273  |
| VT3                        | -0.023 | <0.001 | -0.025 | <0.001 | -0.032 | <0.001 | -0.027 | <0.001 | -0.027 | <0.001 | -0.030 | <0.001 | -0.022 | <0.001 | -0.027 | <0.001 |
| VT4                        | -0.028 | <0.001 | -0.030 | <0.001 | -0.031 | <0.001 | -0.027 | <0.001 | -0.031 | <0.001 | -0.032 | <0.001 | -0.025 | <0.001 | -0.027 | <0.001 |
| VT5                        | -0.059 | <0.001 | -0.056 | <0.001 | -0.060 | <0.001 | -0.057 | <0.001 | -0.058 | <0.001 | -0.059 | <0.001 | -0.054 | <0.001 | -0.062 | <0.001 |
| Mean absolute difference   |        |        |        |        |        |        |        |        |        |        |        |        |        |        |        |        |
| of coefficients between    |        |        |        |        |        |        |        |        |        |        |        |        |        |        |        |        |
| the cross-validation model |        |        |        |        |        |        |        |        |        |        |        |        |        |        |        |        |
|                            | 0.0016 |        | 0.0012 |        | 0.0016 |        | 0.0015 |        | 0.0013 |        | 0.0010 |        | 0.0017 |        | 0.0014 |        |
| and the whole sample       |        |        |        |        |        |        |        |        |        |        |        |        |        |        |        |        |
| model                      |        |        |        |        |        |        |        |        |        |        |        |        |        |        |        |        |

Which health state is better, state A or state B?

State A: Full health

1y 2y 2y 3y 4y 5y 6y 7y 8y 9y 10y

State B:

- Limited in vigorous activities a little;
- Accomplish less than you would like (at work or during other regular daily activities as a result of your physical health or emotional problems) some of the time;
- Social activities are limited some of the time;
- Very mild pain;
- Depressed or nervous none of the time;
- Tired a little of the time.

Appendix Fig 1a Example of time trade-off (TTO) task

Which health state is better, state A or state B?

|   |   |  |
|---|---|--|
| <p><b>Physical functioning</b></p> <p><b>Role limitation</b></p> <p><b>Social functioning</b></p> <p><b>Pain</b></p> <p><b>Mental health</b></p> <p><b>Vitality</b></p> <p><b>Life duration</b></p> | <ul style="list-style-type: none"> <li>• Limited a little in moderate activities;</li> <li>• Accomplish less than you would like (at work or during other regular daily activities as a result of your physical health or emotional problems) most of the time;</li> <li>• Social activities are limited most of the time;</li> <li>• Very mild pain;</li> <li>• Depressed or nervous none of the time;</li> <li>• Tired a little of the time;</li> <li>• Live for 4 years, then die.</li> </ul> <p style="text-align: center;"><b>Choose</b></p> | <ul style="list-style-type: none"> <li>• Limited a lot in bathing and dressing;</li> <li>• Accomplish less than you would like (at work or during other regular daily activities as a result of your physical health or emotional problems) none of the time;</li> <li>• Social activities are limited some of the time;</li> <li>• No pain;</li> <li>• Depressed or nervous most of the time;</li> <li>• Tired all of the time;</li> <li>• Live for 10 years, then die.</li> </ul> <p style="text-align: center;"><b>Choose</b></p> |
|---|---|--|

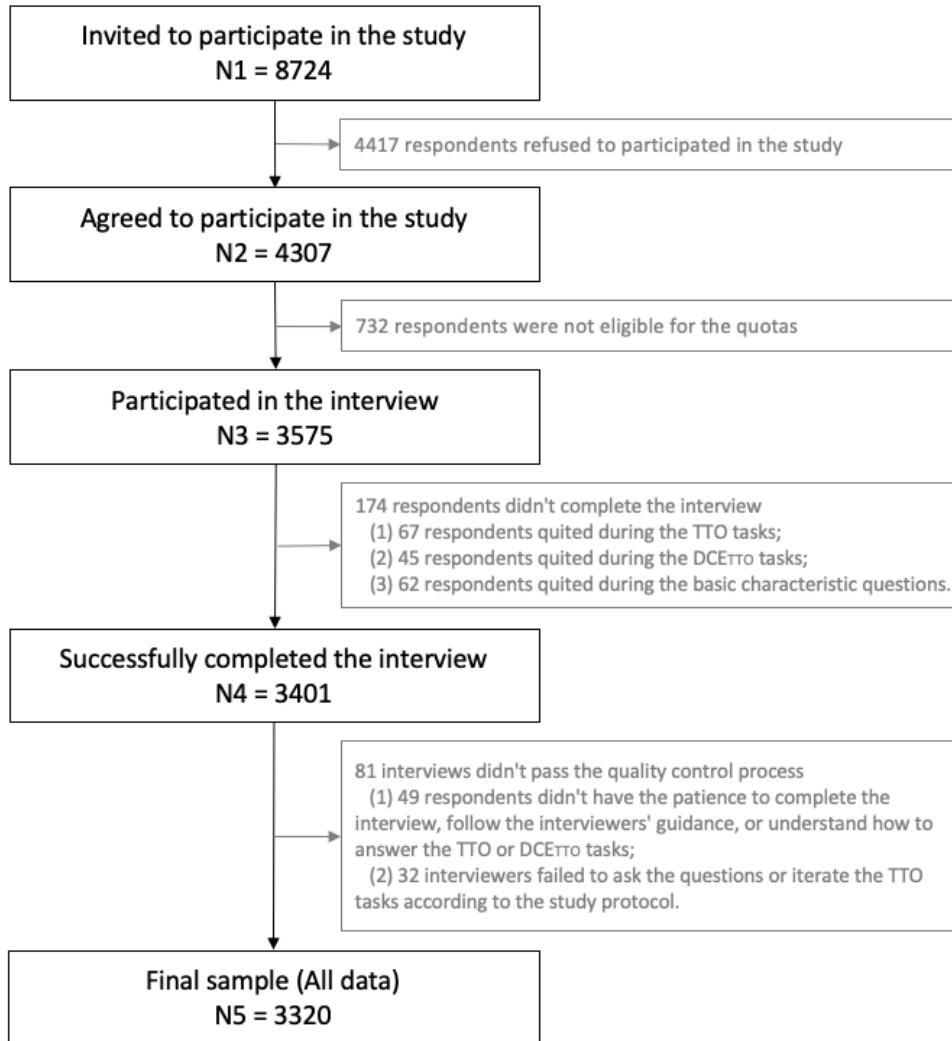
Appendix Fig 1b Example of discrete choice experiment with life duration (DCE<sub>TTO</sub>) task



**Appendix Fig 2a** The distribution of the cities for recruiting respondents in China

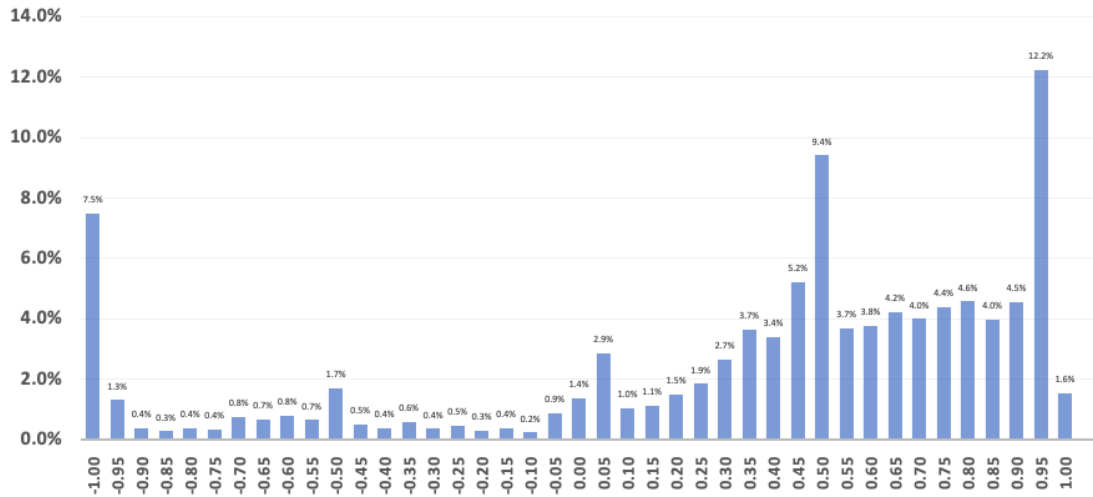


**Appendix Fig 2b** The distribution of respondents recruited in eight cities of China

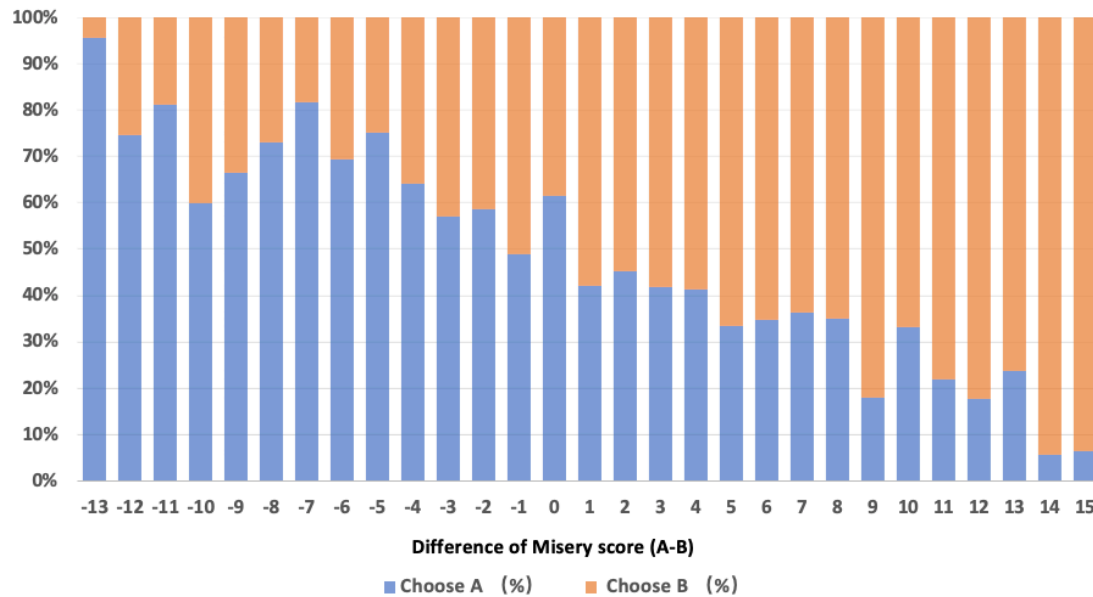


**Appendix Fig 3 The flow chart of the sample inclusion**

Abbr: TTO, time trade-off; DCE<sub>TTO</sub>, discrete choice experiment with life duration.

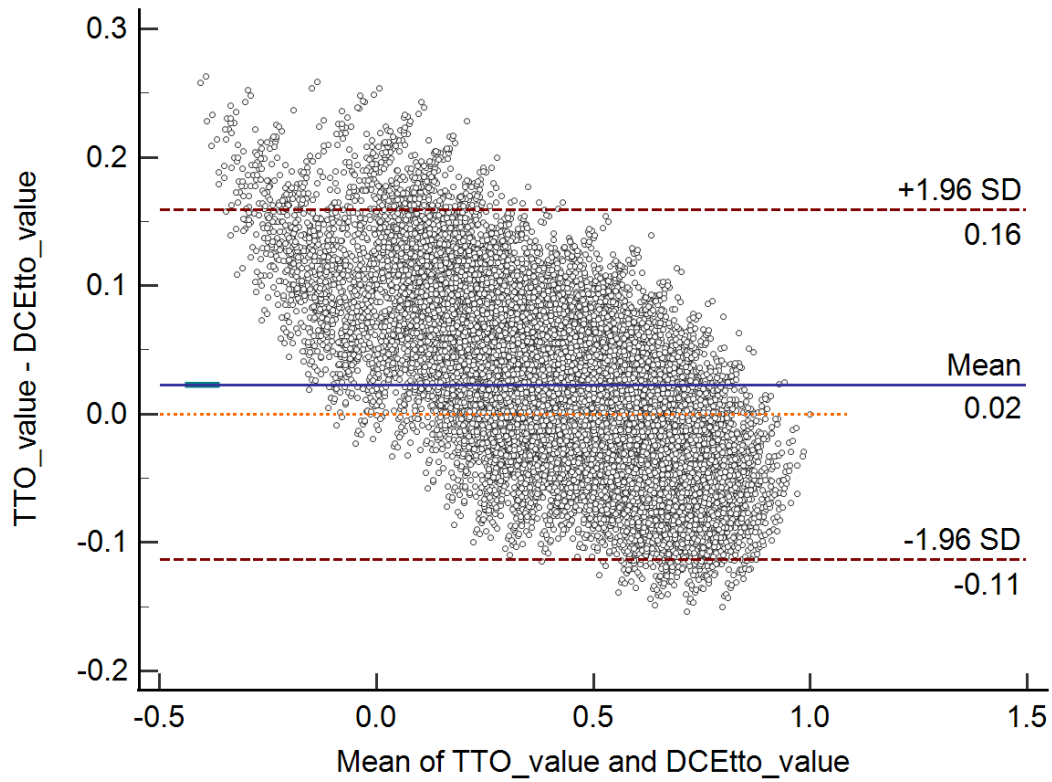


**Appendix Fig 4 The distribution of the observed TTO values for 295 states**



**Appendix Fig 5 Relative preference for health state A versus B by difference in misery score for discrete choice experiment tasks**

Misery score was calculated by summing the severity-levels across all six dimensions. For example, the misery score for health state 121122 would be 9 (1+2+1+1+2+2=9).



**Appendix Fig 6 Bland-Altman plot of difference in predicted utility values between TTO and DCE<sub>TTO</sub>**

X-axis represents the means of TTO values and DCE<sub>TTO</sub> values of all 18,750 health states in SF-6Dv2. Y-axis represents the difference between TTO values and DCE<sub>TTO</sub> values of all 18,750 health states.