

Title

The role of HER2 and HER3 in HER2-amplified cancers beyond breast cancers

Authors

Avishek Majumder¹, Manbir Sandhu², Debarko Banerji³, Veronica Steri⁴, Adam Olshen^{4,5}, Mark M. Moasser^{1,4}

Supplementary Materials

Supplementary Table 1

Supplementary Full gel figures

Supplementary Table 1

Sources of the cell lines

	Source	Location	comments
T47D	ATCC	Manassas, Virginia	
MDA-231	ATCC	Manassas, Virginia	
MCF-7	ATCC	Manassas, Virginia	authenticated June 2019; Genetica Cell Line te
SkBr3	ATCC	Manassas, Virginia	authenticated June 2019; Genetica Cell Line te
BT474	ATCC	Manassas, Virginia	authenticated June 2019; Genetica Cell Line te
MDA-361	ATCC	Manassas, Virginia	
MDA-453	ATCC	Manassas, Virginia	
HCC1569	ATCC	Manassas, Virginia	authenticated June 2019; Genetica Cell Line te
HCC1954	ATCC	Manassas, Virginia	
HCC1419	ATCC	Manassas, Virginia	
UACC732	ATCC	Manassas, Virginia	
SUM190	Asterand	Detroit, MI	
T24	ATCC	Manassas, Virginia	
CLS-439	Cell Line Service	Eppelheim, Germany	within 6 months of purchase
HCT116	gift of Michael Korn	UCSF	
HT29	ATCC	Manassas, Virginia	within 6 months of purchase
M090	gift of Livio Trusolini	Univ of Turin	(converted from PDX, not a published cell line)
AGS	ATCC	Manassas, Virginia	within 6 months of purchase
KatoIII	ATCC	Manassas, Virginia	within 6 months of purchase
SNU-1	ATCC	Manassas, Virginia	within 6 months of purchase
SNU-5	ATCC	Manassas, Virginia	within 6 months of purchase
SNU-16	ATCC	Manassas, Virginia	within 6 months of purchase
MKN7	JCRB Cell Bank	Osaka, Japan	within 6 months of purchase
N87	ATCC	Manassas, Virginia	within 6 months of purchase
OE19	gift of Michael Korn	UCSF	
TE-7	gift of Michael Korn	UCSF	
OE-21	gift of Michael Korn	UCSF	
BIC-1	gift of Michael Korn	UCSF	
SEG-1	gift of Michael Korn	UCSF	
TE-4	Riken BRC	Ibaraki, Japan	within 6 months of purchase
OE-33	gift of Michael Korn	UCSF	
KYSE-410	SigmaAldrich	St. Louis, MO	within 6 months of purchase
H460	gift of David Jablons	UCSF	
H1703	gift of David Jablons	UCSF	
H838	gift of David Jablons	UCSF	
VMRCLCP	JCRB Cell Bank	Osaka, Japan	within 6 months of purchase
H2170	ATCC	Manassas, Virginia	within 6 months of purchase
Calu3	gift of Trever Bivona	UCSF	
Cal27	ATCC	Manassas, Virginia	within 6 months of purchase
BICR-16	SigmaAldrich	St. Louis, MO	within 6 months of purchase
TEN	Riken BRC, Ibaraki, Japan		within 6 months of purchase
USPC-ARK1	gift of Allesandro Santin	Yale	
USPC-ARK2	gift of Allesandro Santin	Yale	
USPC-ARK4	gift of Allesandro Santin	Yale	
USPC-ARK7	gift of Allesandro Santin	Yale	
Hec1A	gift of Linda Guidice	UCSF	

ATCC = American Type Culture Collection

JCRB = Japanese Collection of Research Bioresources

Riken BRC = Riken Bioresource Center

Supplementary information

(Full Western blot images for main figures in the paper)

Full-blot for Figure 5

Fig.5: SUM190 cells

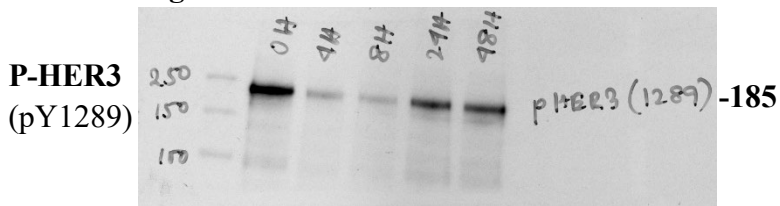


Fig.5: HCC1419 cells

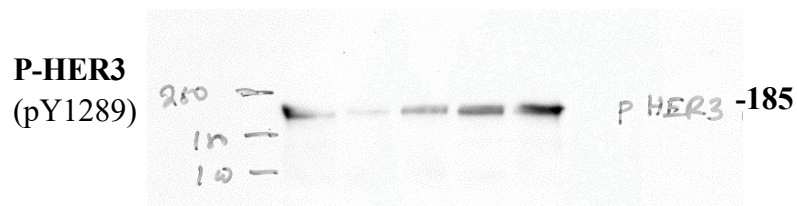


Fig.5: SUM190 cells

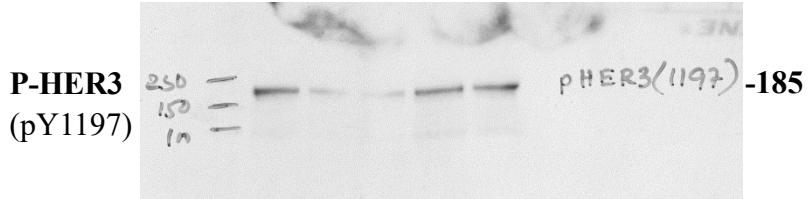


Fig.5: HCC1419 cells

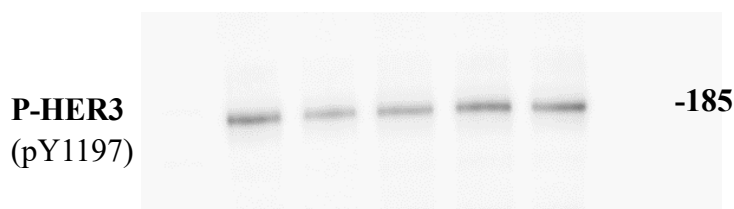


Fig.5: SUM190 cells



Fig.5: HCC1419 cells



Fig.5: SUM190 cells

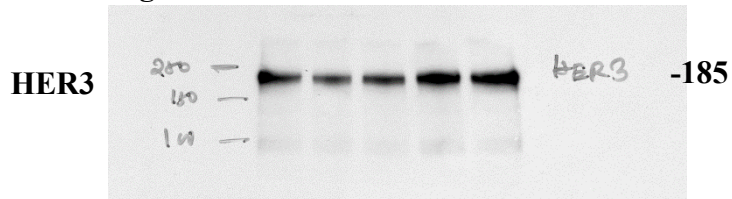


Fig.5: HCC1419 cells

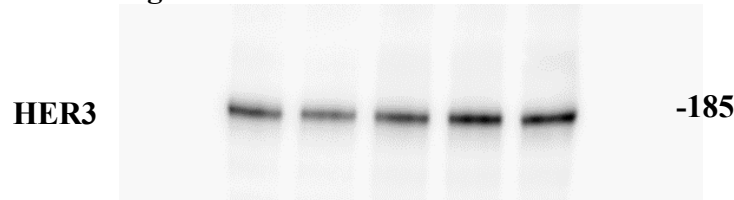


Fig.5: SUM190 cells

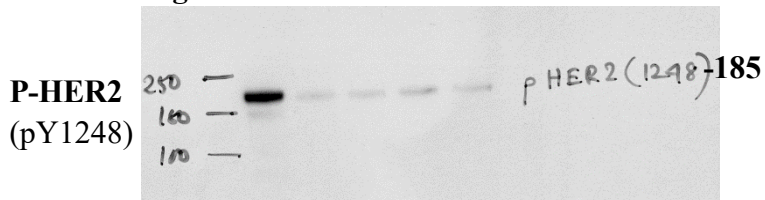


Fig.5: HCC1419 cells

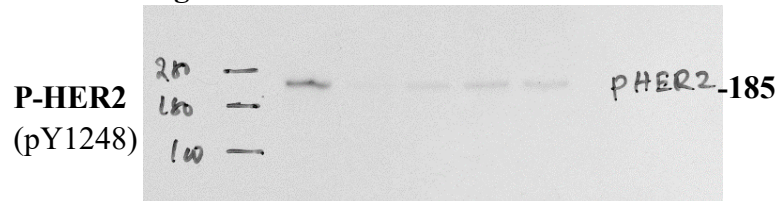


Fig.5: SUM190 cells

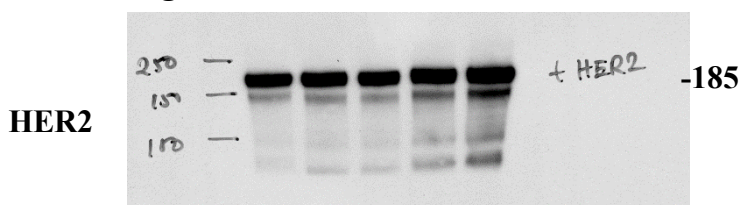


Fig.5: HCC1419 cells

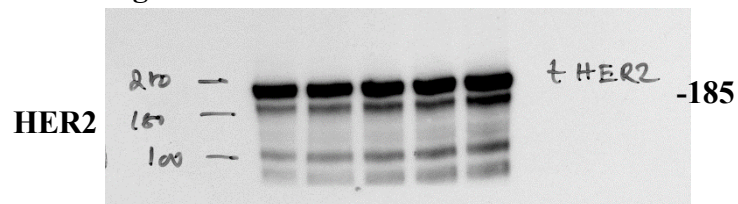


Fig.5: SUM190 cells

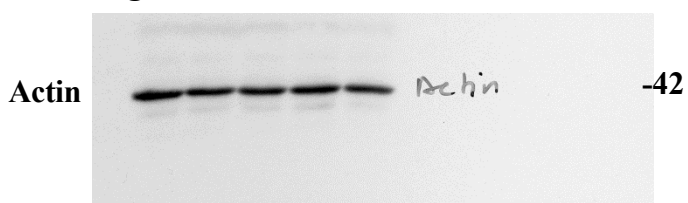
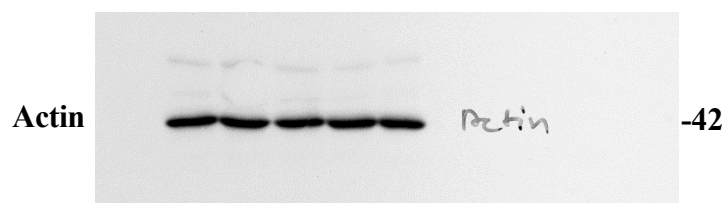


Fig.5: HCC1419 cells



Full-blot for Figure 5

Fig.5: HCC1954 cells



Fig.5: HCC1569 cells

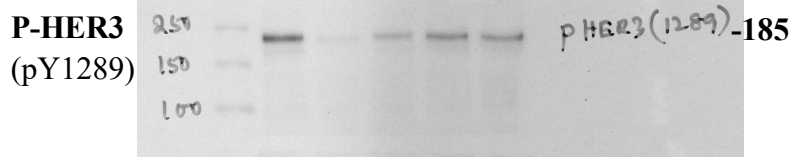


Fig.5: HCC1954 cells



Fig.5: HCC1569 cells



Fig.5: HCC1954 cells



Fig.5: HCC1569 cells



Fig.5: HCC1954 cells

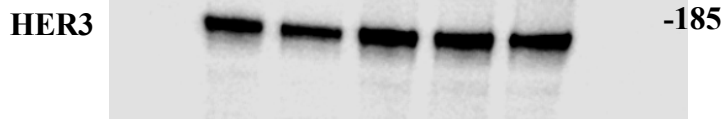


Fig.5: HCC1569 cells

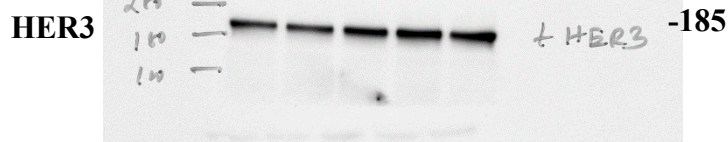


Fig.5: HCC1954 cells

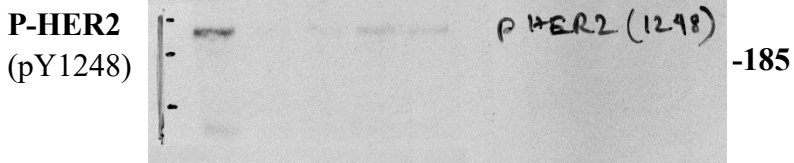


Fig.5: HCC1569 cells

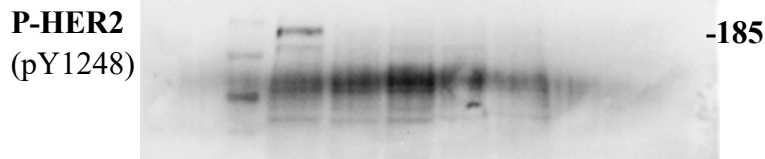


Fig.5: HCC1954 cells

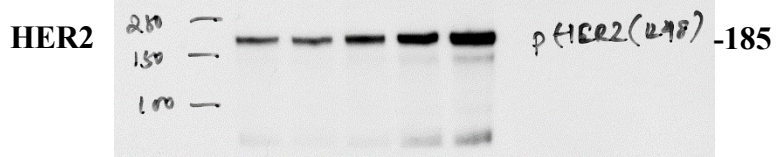


Fig.5: HCC1569 cells

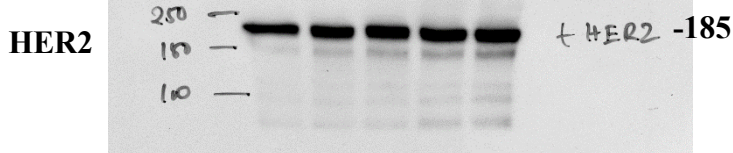


Fig.5: HCC1954 cells

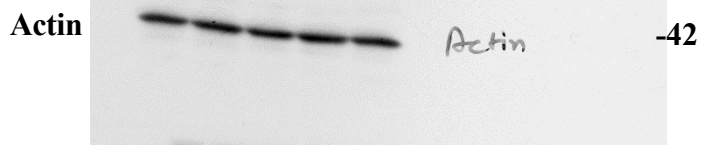
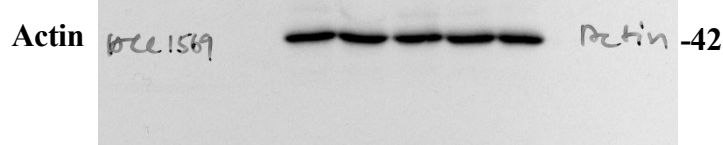


Fig.5: HCC1569 cells



Full-blot for Figure 5

Fig.5: UACC732 cells



Fig.5: CLS-439 cells

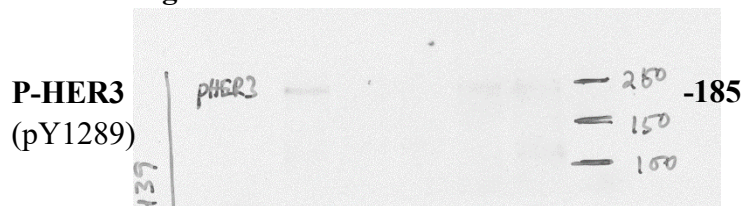


Fig.5: UACC732 cells

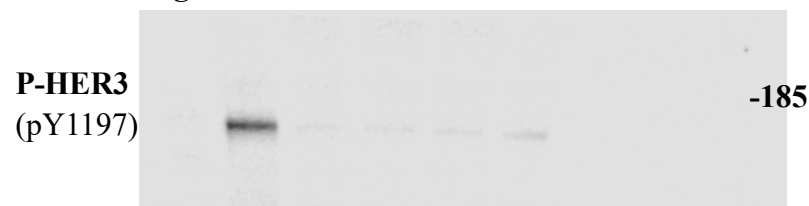


Fig.5: CLS-439 cells

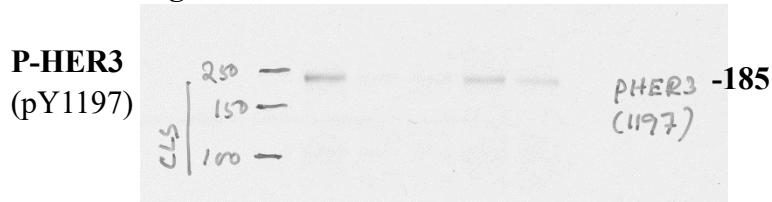


Fig.5: UACC732 cells



Fig.5: CLS-439 cells

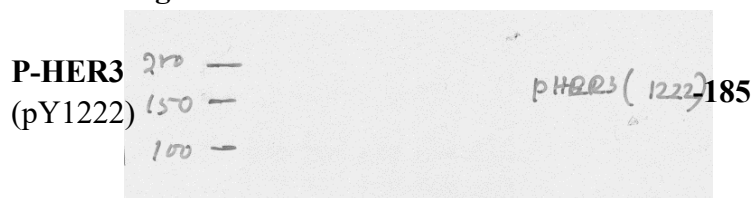


Fig.5: UACC732 cells

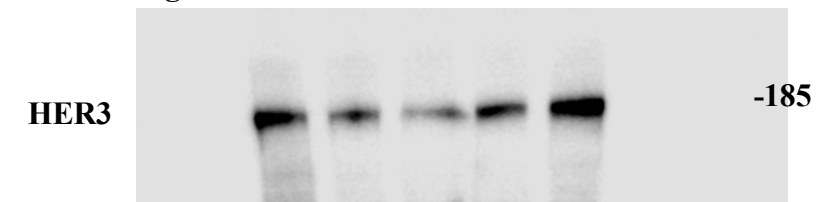


Fig.5: CLS-439 cells

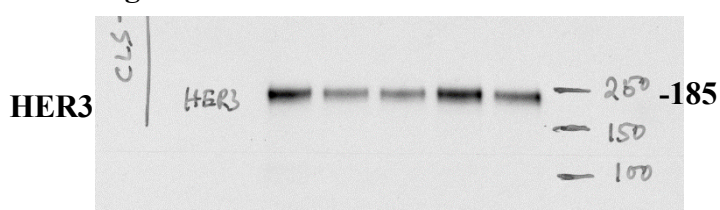


Fig.5: UACC732 cells

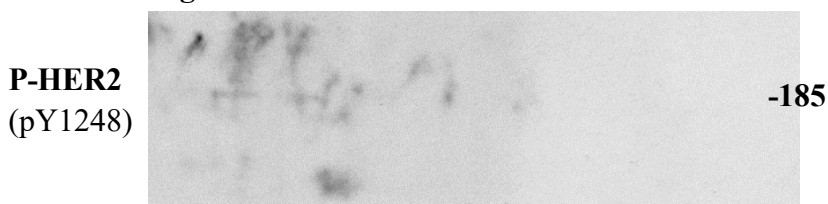


Fig.5: CLS-439 cells

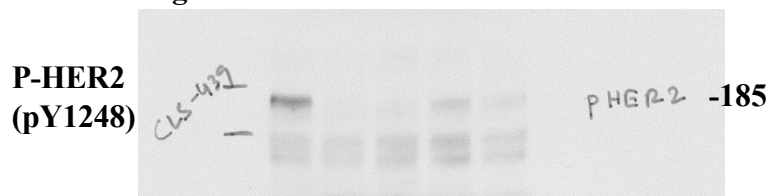


Fig.5: UACC732 cells

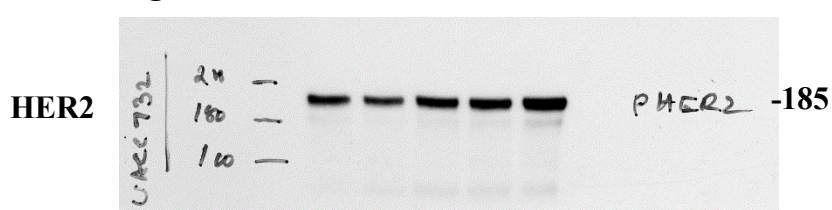


Fig.5: CLS-439 cells



Fig.5: UACC732 cells

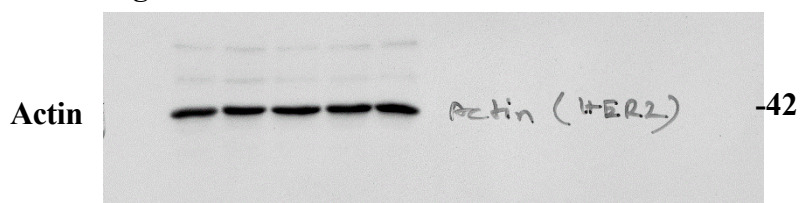
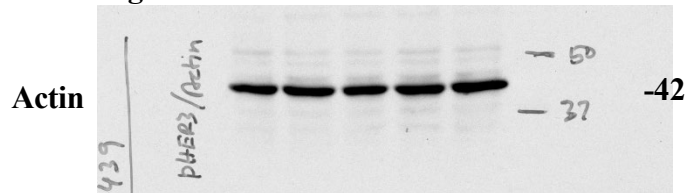


Fig.5: CLS-439 cells



Full-blot for Figure 5

Fig.5: M090 cells

P-HER3 (pY1289) -185



Fig.5: MKN-7 cells

P-HER3 (pY1289)



Fig.5: M090 cells

P-HER3 (pY1197) -185

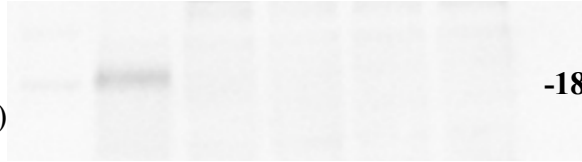


Fig.5: MKN-7 cells

P-HER3 (pY1197)

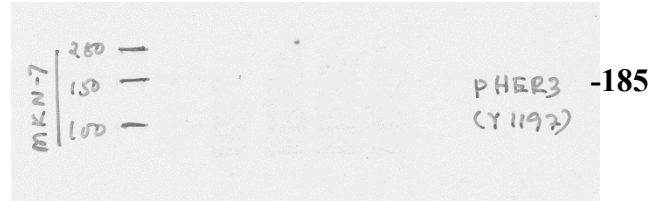


Fig.5: M090 cells

P-HER3 (pY1222) -185



Fig.5: MKN-7 cells

P-HER3 (pY1222)



Fig.5: M090 cells

HER3 -185

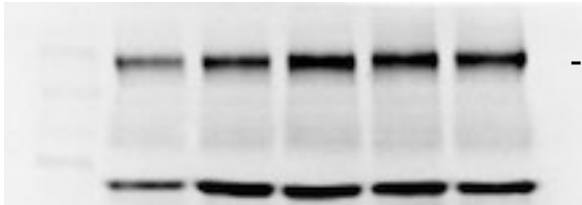


Fig.5: MKN-7 cells

HER3



Fig.5: M090 cells

P-HER2 (pY1248) -185



Fig.5: MKN-7 cells

P-HER2 (pY1248)

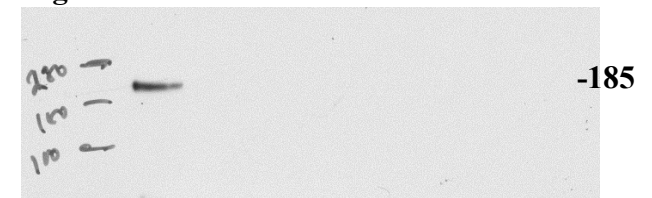


Fig.5: M090 cells

HER2 -185

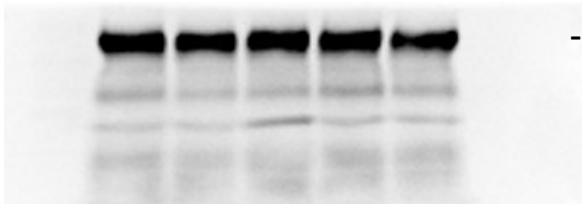


Fig.5: MKN-7 cells

HER2

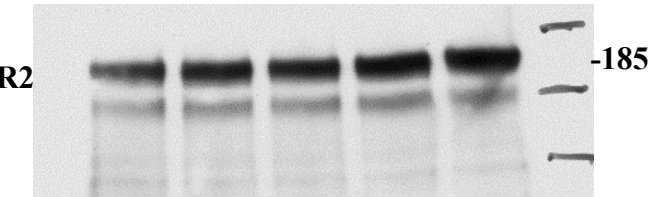


Fig.5: M090 cells

Actin -42

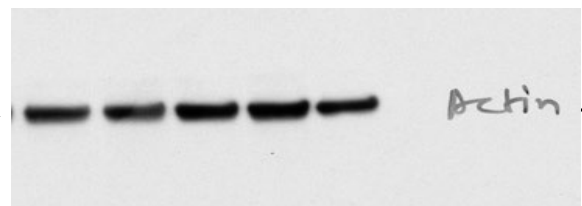
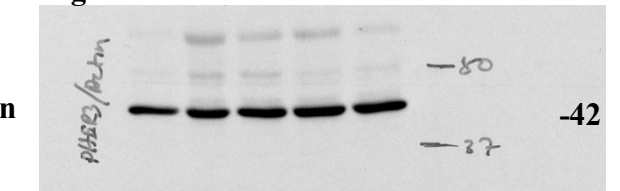


Fig.5: MKN-7 cells

Actin



Full-blot for Figure 5

Fig.5: N87 cells

P-HER3
(pY1289)

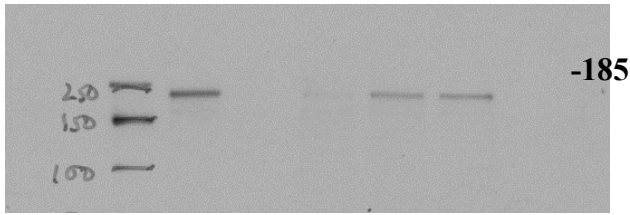


Fig.5: OE19 cells

P-HER3
(pY1289)

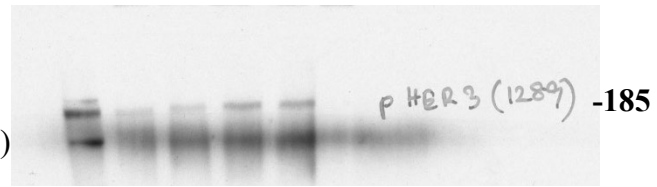


Fig.5: N87 cells

P-HER3
(pY1197)

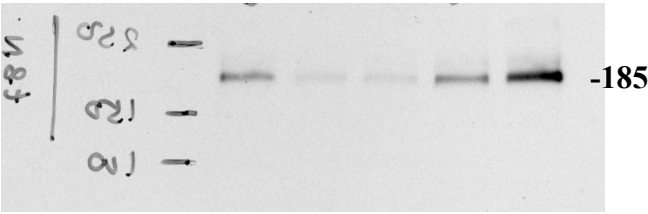


Fig.5: OE19 cells

P-HER3
(pY1297)

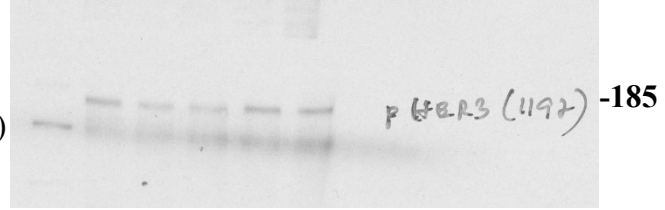


Fig.5: N87 cells

P-HER3
(pY1222)



Fig.5: OE19 cells

P-HER3
(pY1222)

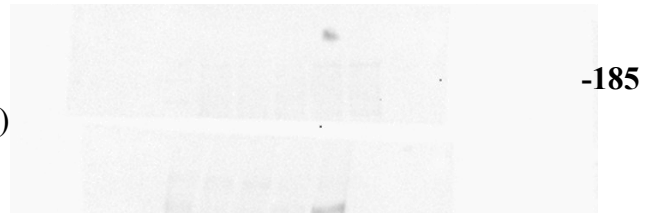


Fig.5: N87 cells

HER3

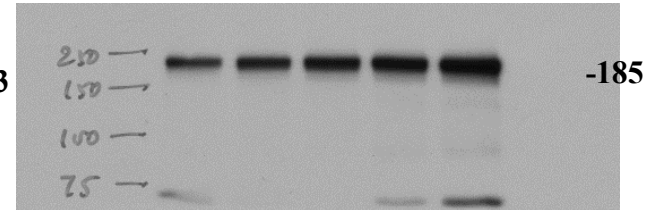


Fig.5: OE19 cells

HER3

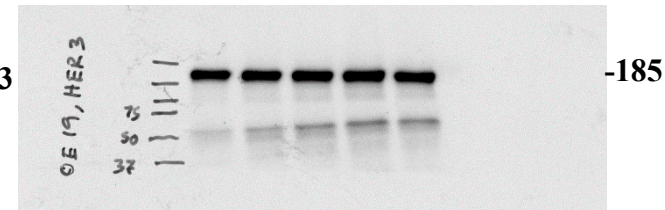


Fig.5: N87 cells

P-HER2
(pY1248)

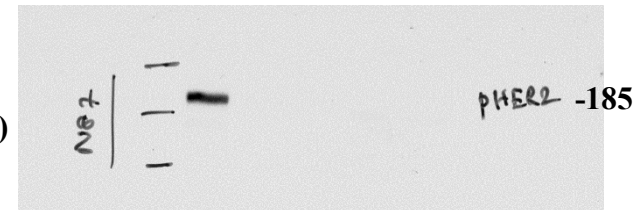


Fig.5: OE19 cells

P-HER2
(pY1248)

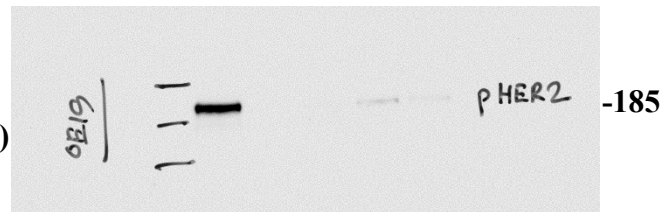


Fig.5: N87 cells

HER2

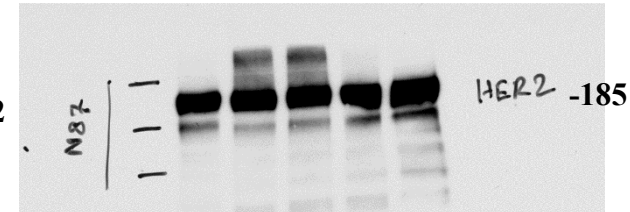
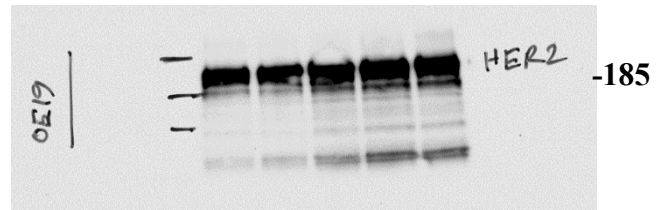
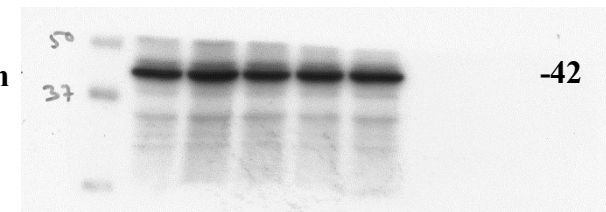


Fig.5: OE19 cells

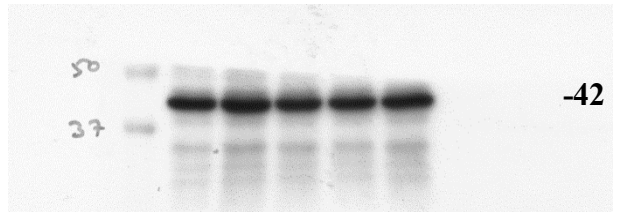
HER2



Actin



Actin



Full-blot for Figure 5

Fig.5: TE-4 cells

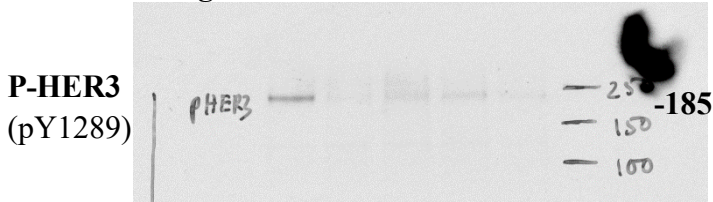


Fig.5: OE33 cells

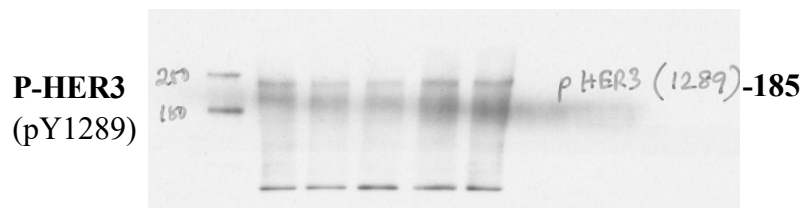


Fig.5: TE-4 cells

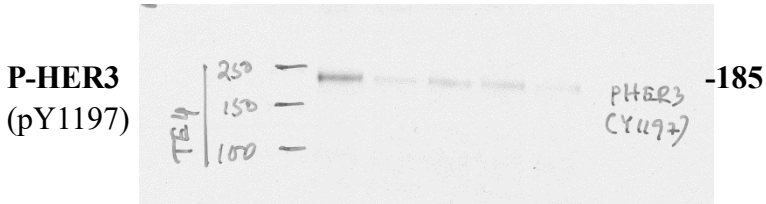


Fig.5: OE33 cells

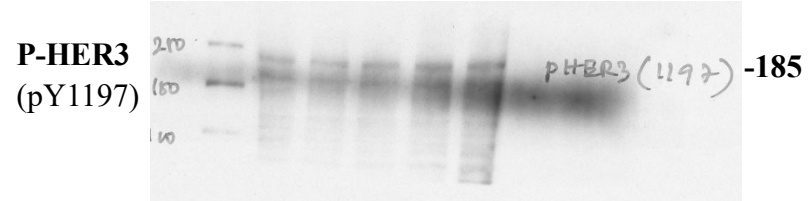


Fig.5: TE-4 cells

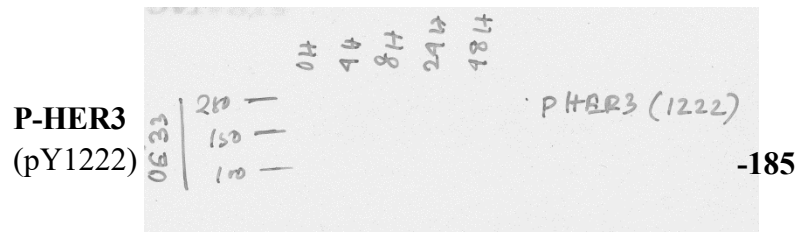
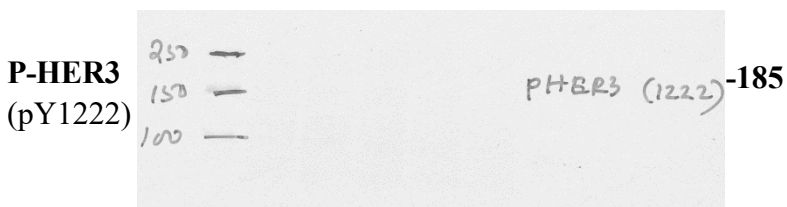


Fig.5: TE-4 cells

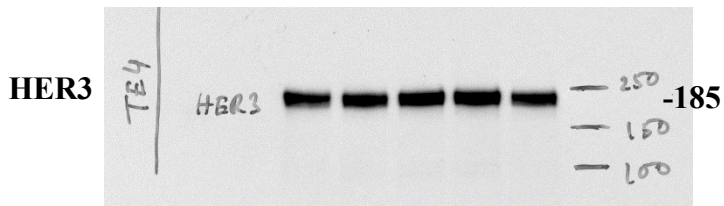


Fig.5: OE33 cells

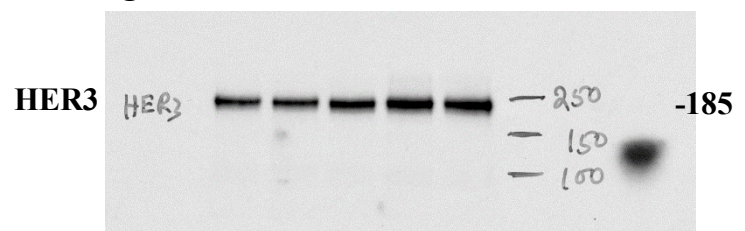


Fig.5: TE-4 cells

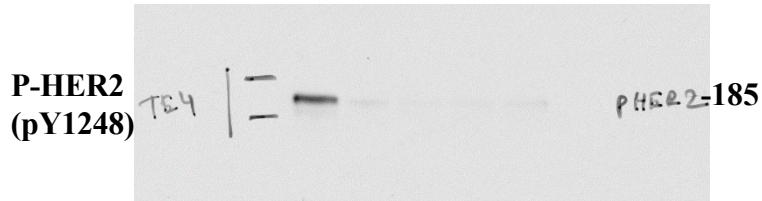


Fig.5: OE33 cells

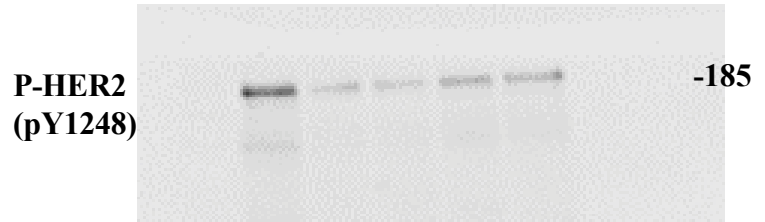


Fig.5: TE-4 cells

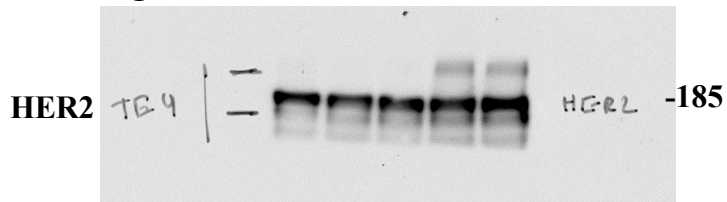


Fig.5: OE33 cells

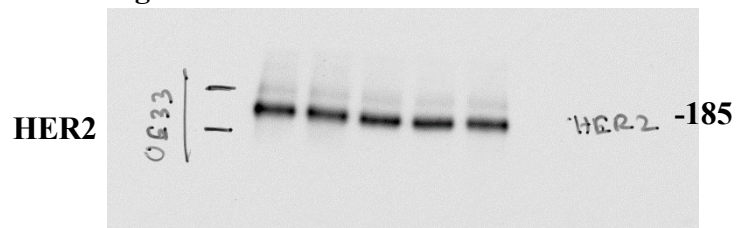


Fig.5: TE-4 cells

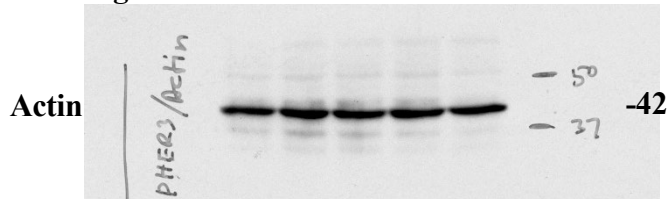
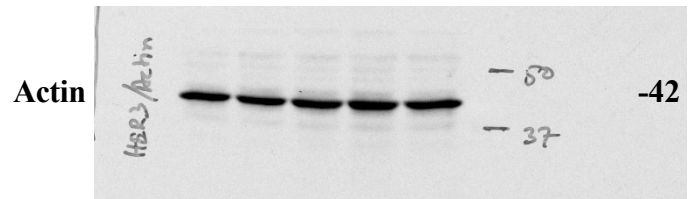


Fig.5: OE33 cells



Full-blot for Figure 5

Fig.5: KYSE-410 cells

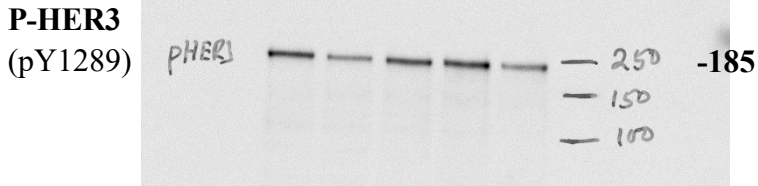


Fig.5: OE21 cells

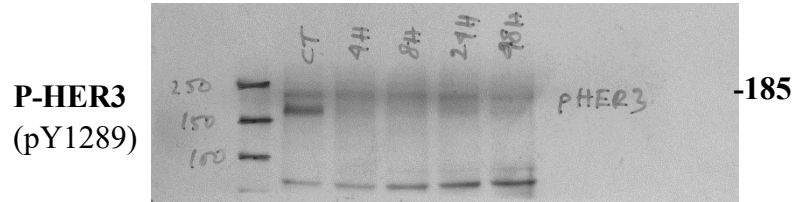


Fig.5: KYSE-410 cells

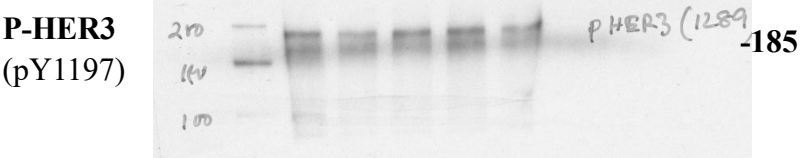


Fig.5: OE21 cells

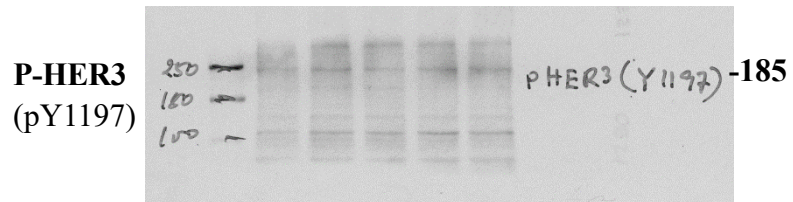


Fig.5: KYSE-410 cells



Fig.5: OE21 cells



Fig.5: KYSE-410 cells



Fig.5: OE21 cells

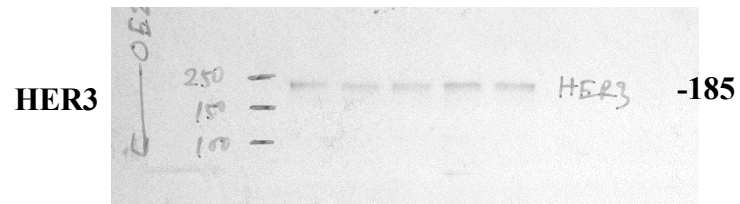


Fig.5: KYSE-410 cells



Fig.5: OE21 cells



Fig.5: KYSE-410 cells

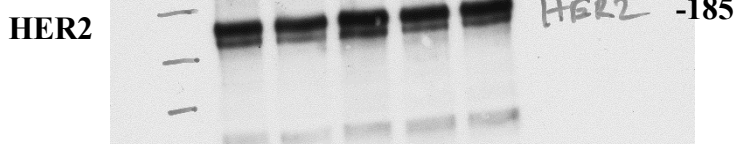


Fig.5: OE21 cells

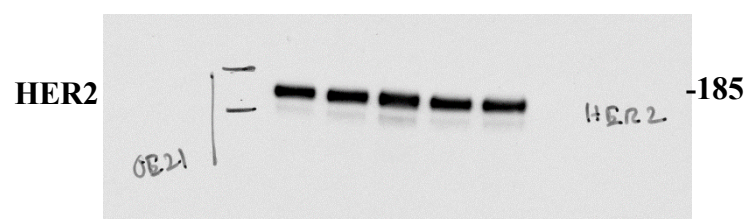


Fig.5: KYSE-410 cells

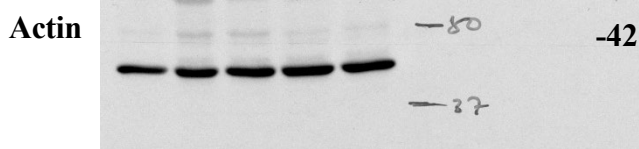
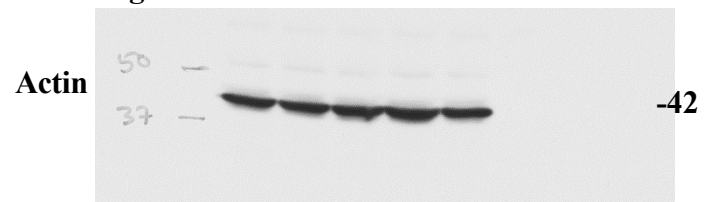


Fig.5: OE21 cells



Full-blot for Figure 5

Fig.5: TE7 cells

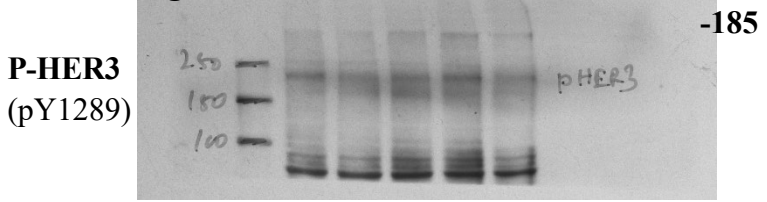


Fig.5: Calu 3 cells

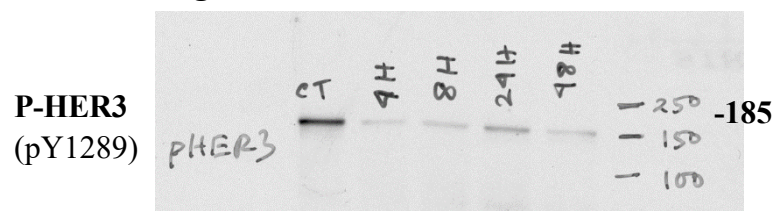


Fig.5: TE7 cells

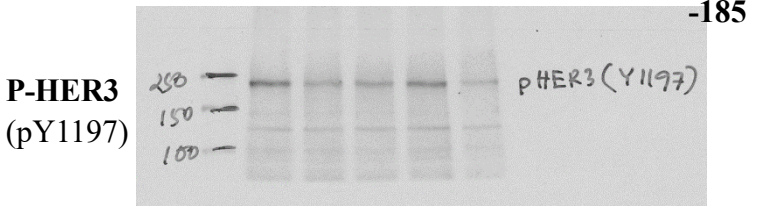


Fig.5: Calu 3 cells

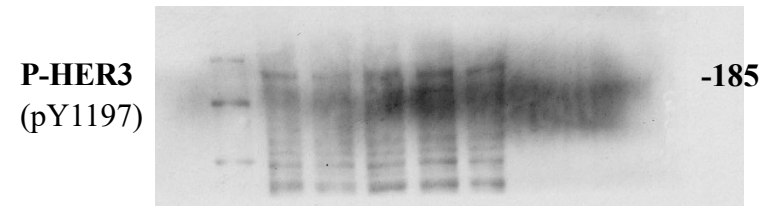


Fig.5: TE7 cells



Fig.5: Calu 3 cells



Fig.5: TE7 cells

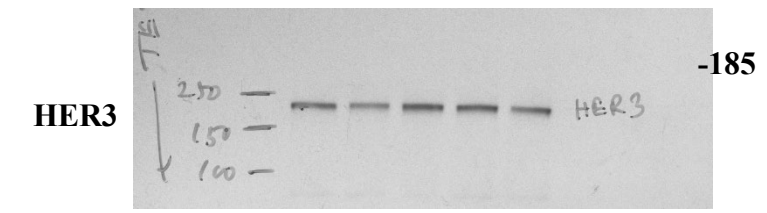


Fig.5: Calu 3 cells

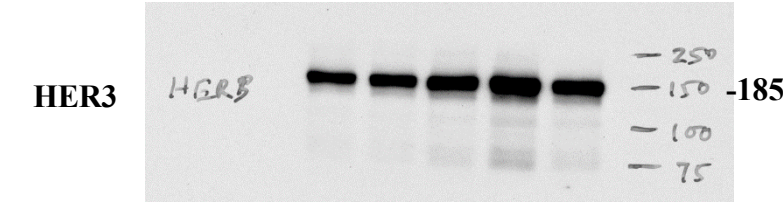


Fig.5: TE7 cells

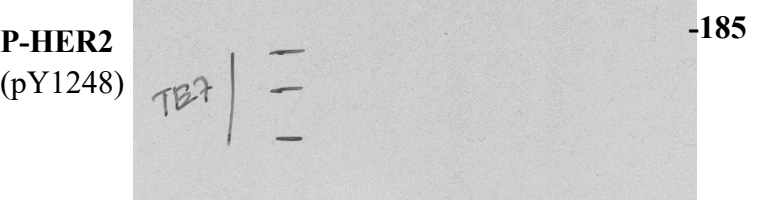


Fig.5: Calu 3 cells

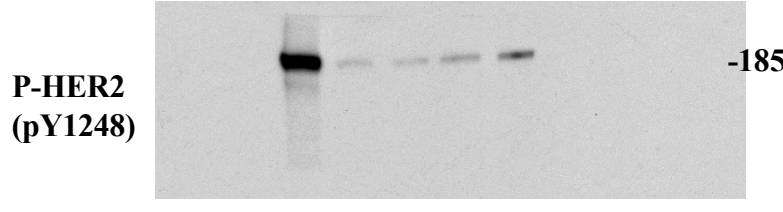


Fig.5: TE7 cells

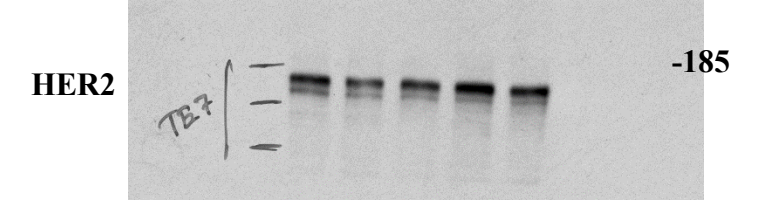


Fig.5: Calu 3 cells

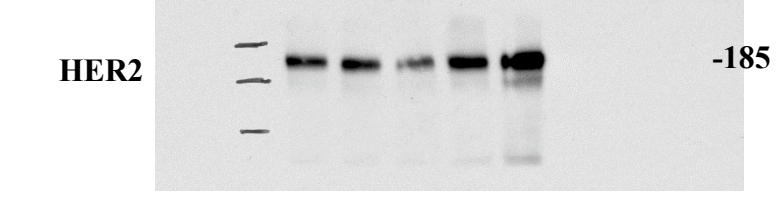


Fig.5: TE7 cells

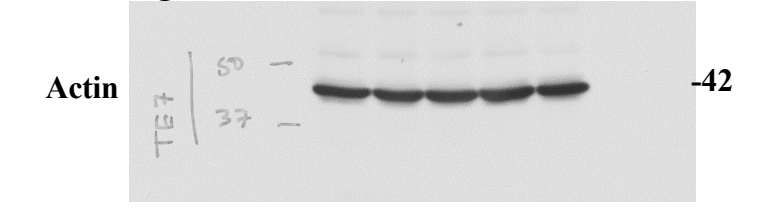
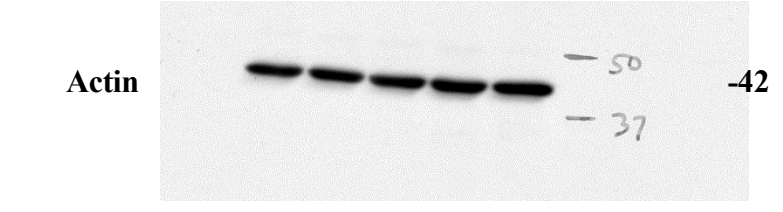


Fig.5: Calu 3 cells



Full-blot for Figure 5

Fig.5: VMRCLCP cells

P-HER3 (pY1289) *pHER3* -185

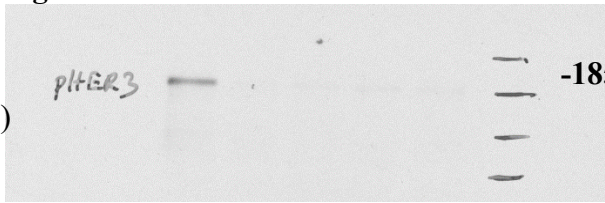


Fig.5: H2170 cells

P-HER3 (pY1289) -185



Fig.5: VMRCLCP cells

P-HER3 (pY1197) 250 — 150 — 100 — *pHER3 (1197)* -185

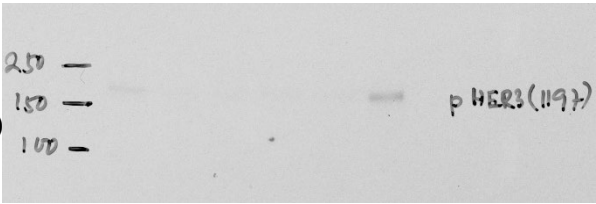


Fig.5: H2170 cells

P-HER3 (pY1197) -185



Fig.5: VMRCLCP cells

P-HER3 (pY1222) 250 — 150 — 100 — *pHER3 (1222)* -185

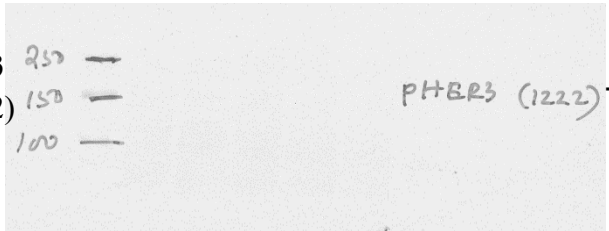


Fig.5: H2170 cells

P-HER3 (pY1222) 250 — 150 — 100 — -185



Fig.5: VMRCLCP cells

HER3 *HER3* -185

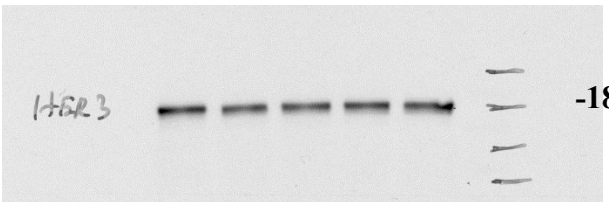


Fig.5: H2170 cells

HER3 -185

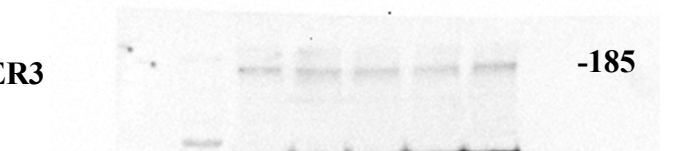


Fig.5: VMRCLCP cells

P-HER2 (pY1248) -185

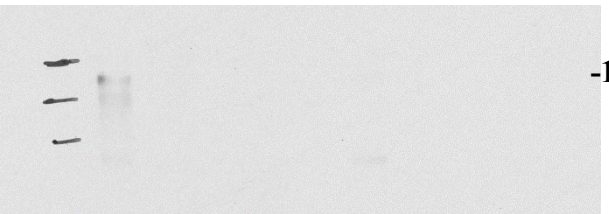


Fig.5: H2170 cells

P-HER2 (pY1248) -185



Fig.5: VMRCLCP cells

HER2 *VMR* -185

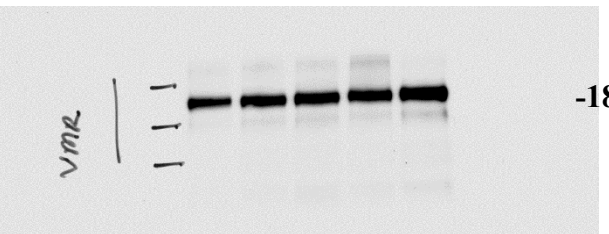


Fig.5: H2170 cells

HER2 -185

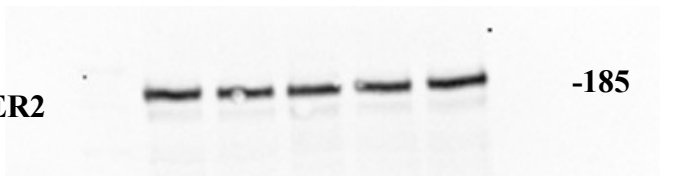


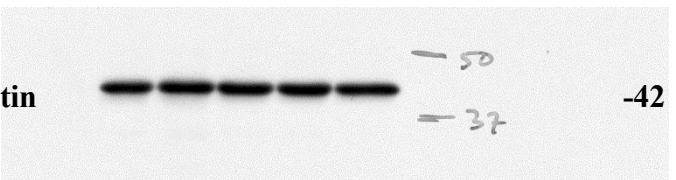
Fig.5: VMRCLCP cells

Actin 50 — 37 — -42



Fig.5: H2170 cells

Actin 50 — 37 — -42



Full-blot for Figure 5

Fig.5: BICR16 cells

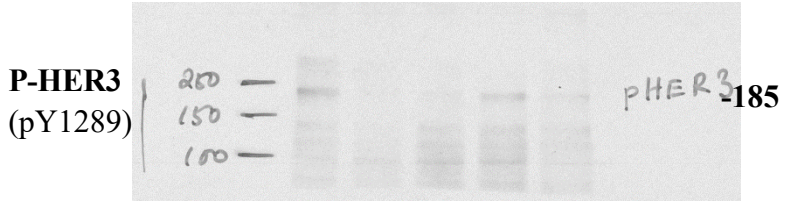


Fig.5: Cal27 cells

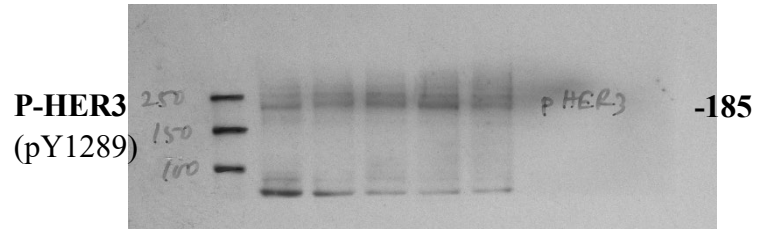


Fig.5: BICR16 cells



Fig.5: Cal27 cells

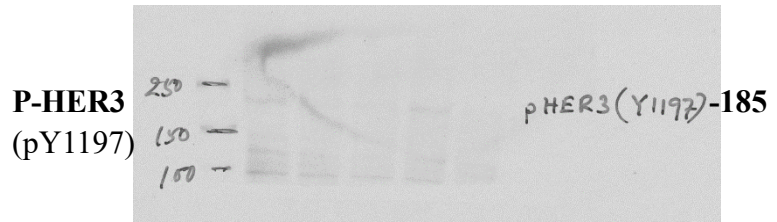


Fig.5: BICR16 cells

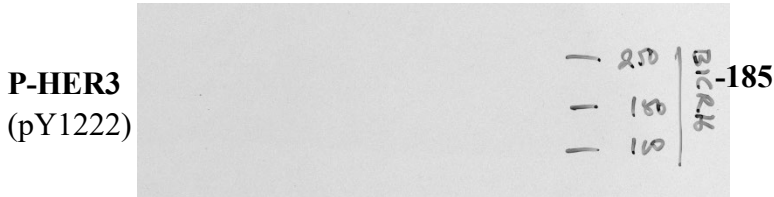


Fig.5: Cal27 cells

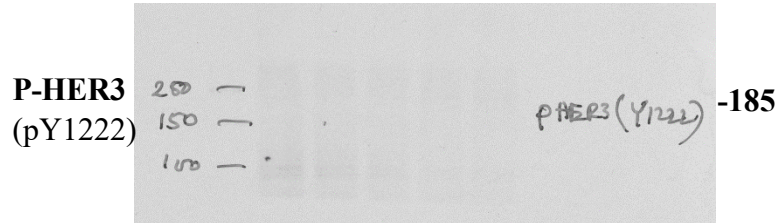


Fig.5: BICR16 cells

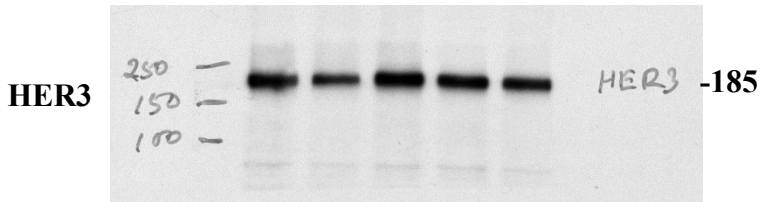


Fig.5: Cal27 cells

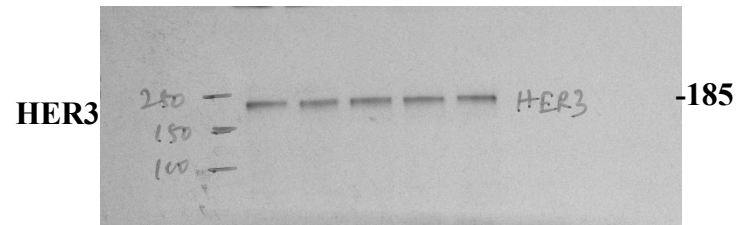


Fig.5: BICR16 cells

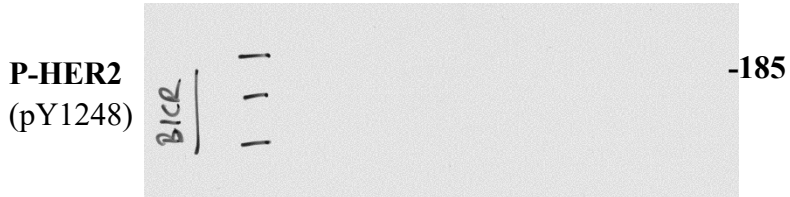


Fig.5: Cal27 cells



Fig.5: BICR16 cells

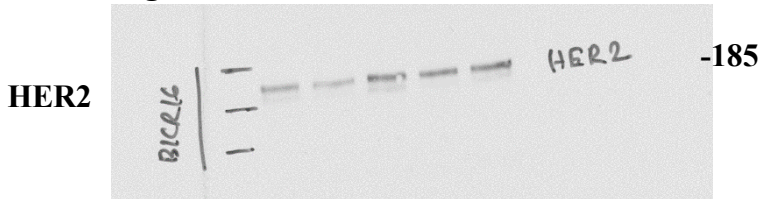


Fig.5: Cal27 cells

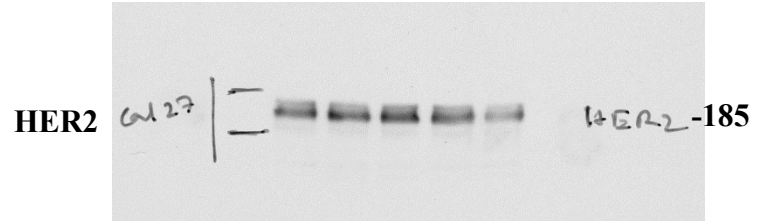


Fig.5: BICR16 cells

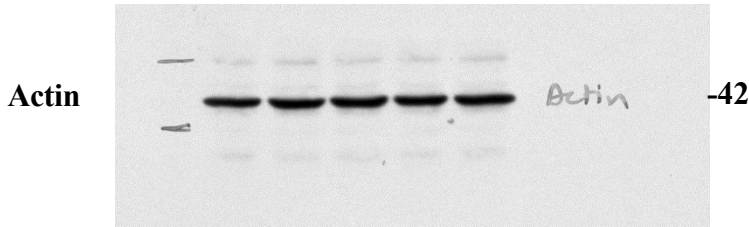
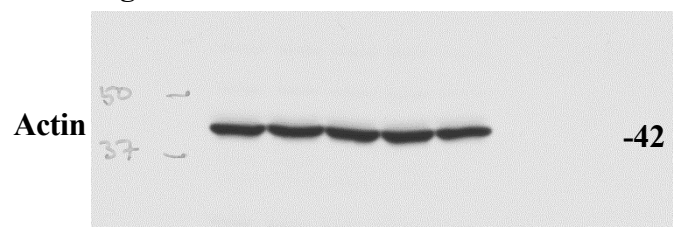


Fig.5: Cal27 cells



Full-blot for Figure 5

Fig.5: TEN cells

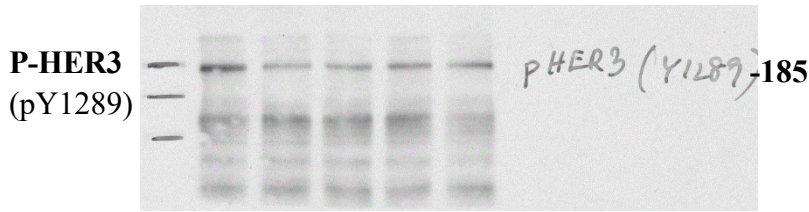


Fig.5: USPC-ARC1 cells

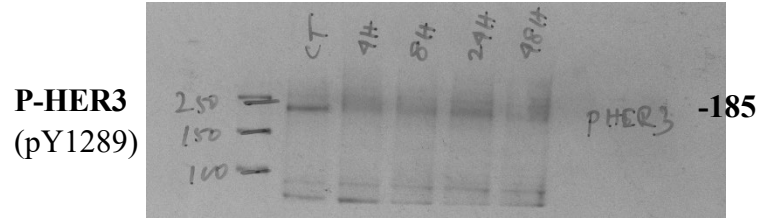


Fig.5: TEN cells

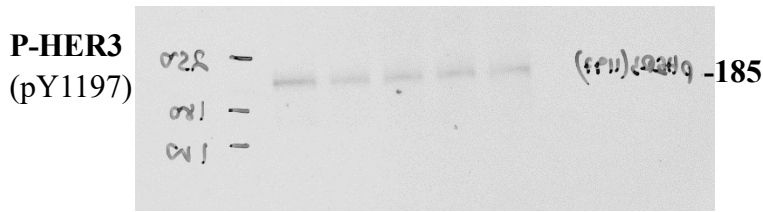


Fig.5: USPC-ARC1 cells

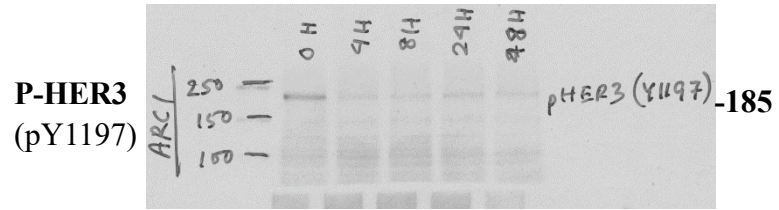


Fig.5: TEN cells



Fig.5: USPC-ARC1 cells

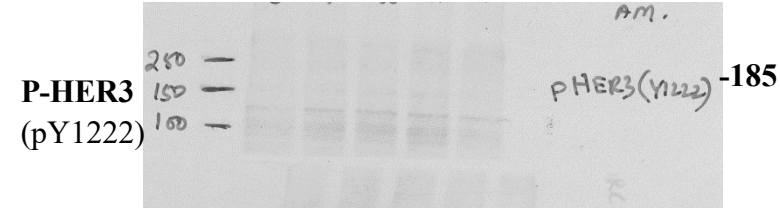


Fig.5: TEN cells

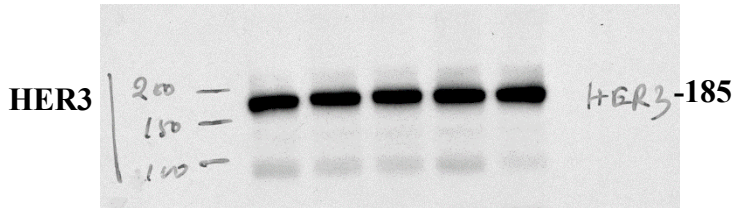


Fig.5: USPC-ARC1 cells

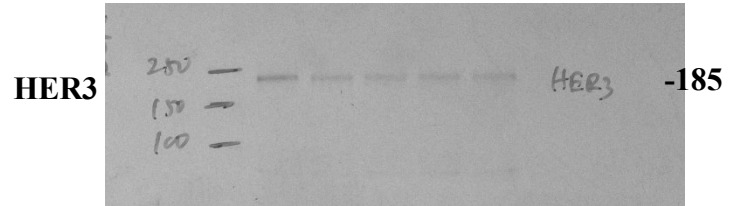


Fig.5: TEN cells

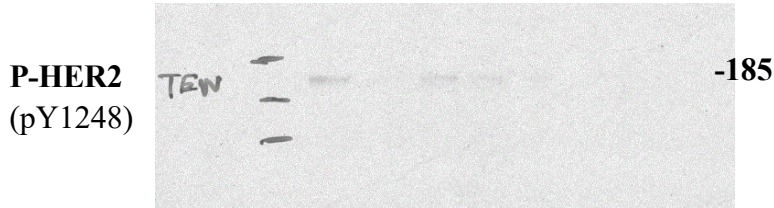


Fig.5: USPC-ARC1 cells

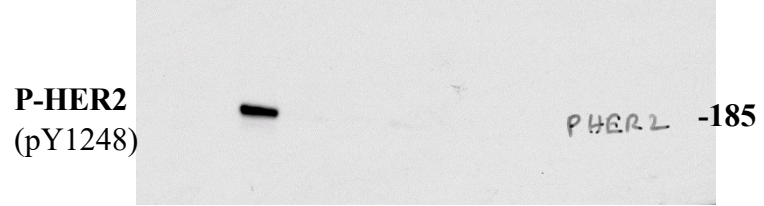


Fig.5: TEN cells

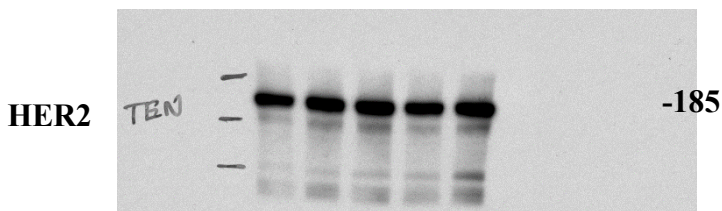


Fig.5: USPC-ARC1 cells

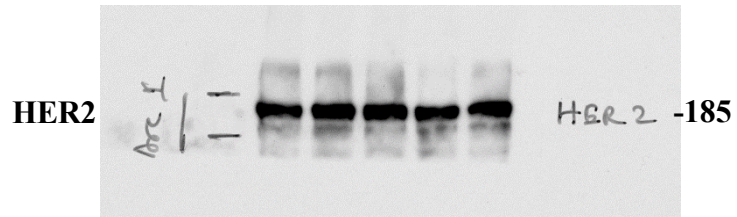


Fig.5: TEN cells

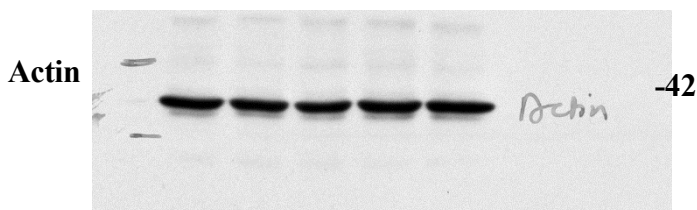
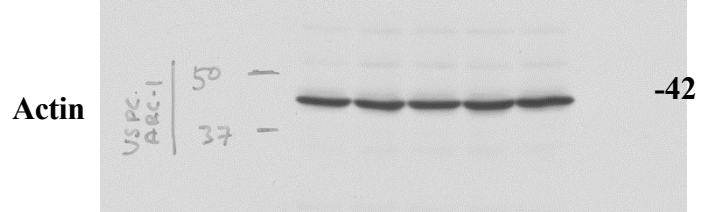


Fig.5: USPC-ARC1 cells



Full-blot for Figure 5

Fig.5: USPC-ARC2 cells

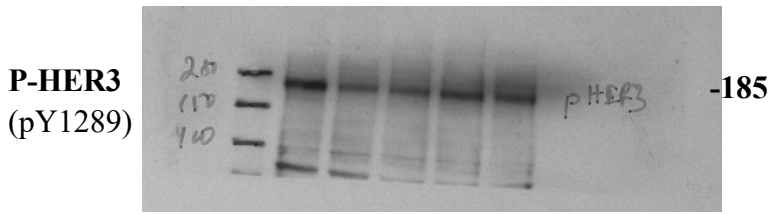


Fig.5: USPC-ARC4 cells

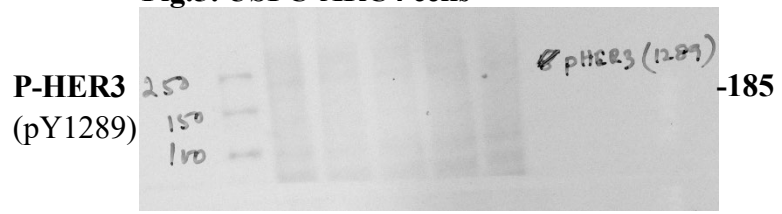


Fig.5: USPC-ARC2 cells

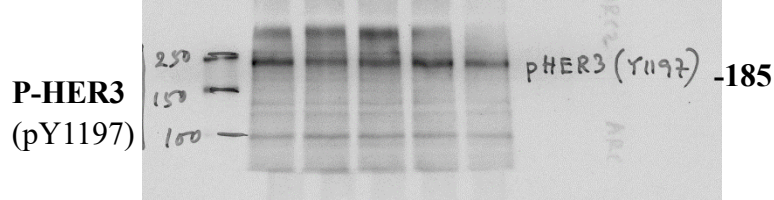


Fig.5: USPC-ARC4 cells

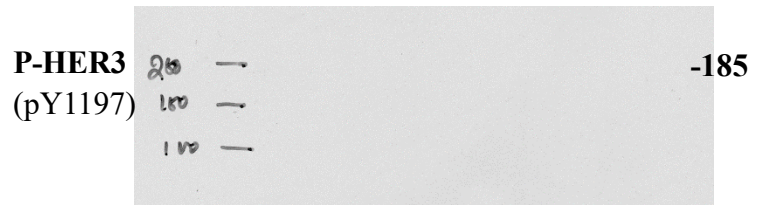


Fig.5: USPC-ARC2 cells

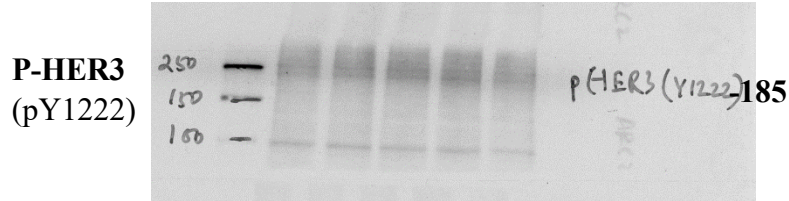


Fig.5: USPC-ARC4 cells



Fig.5: USPC-ARC2 cells

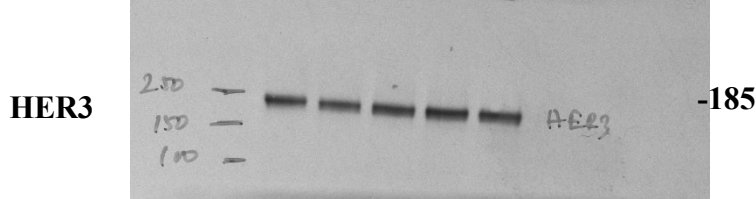


Fig.5: USPC-ARC4 cells

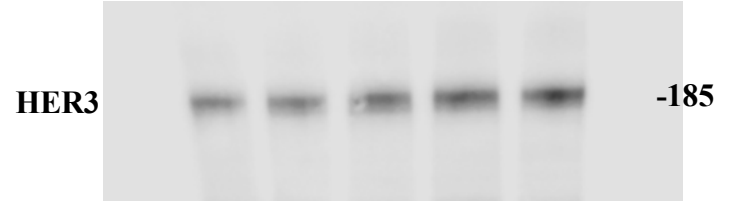


Fig.5: USPC-ARC2 cells

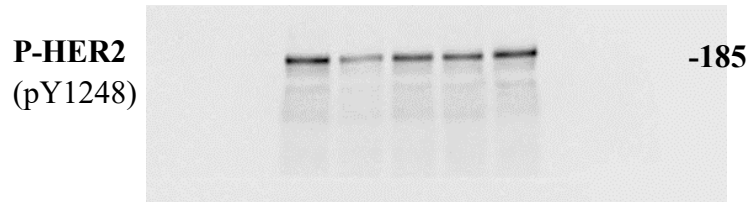


Fig.5: USPC-ARC4 cells



Fig.5: USPC-ARC2 cells

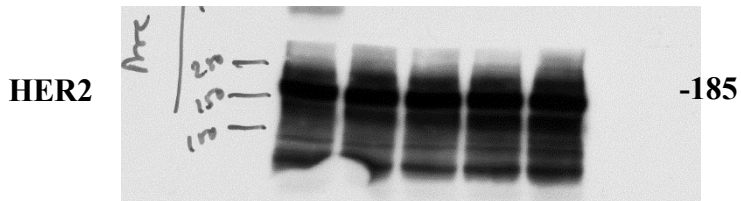


Fig.5: USPC-ARC4 cells

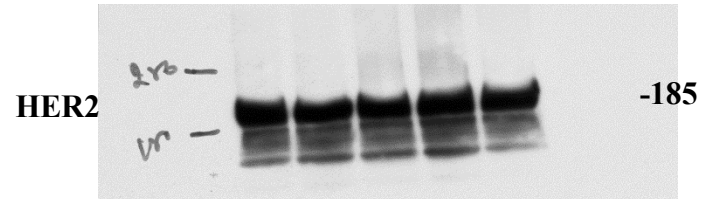


Fig.5: USPC-ARC2 cells

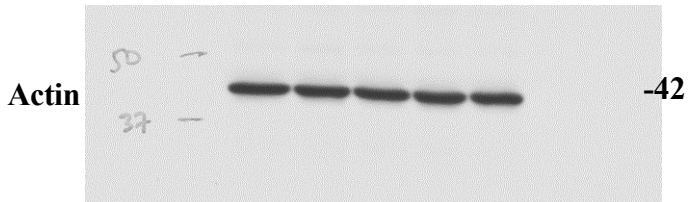
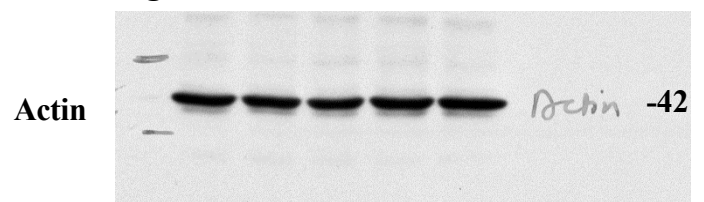


Fig.5: USPC-ARC4 cells



Full blots for Figure 6

Fig. 6A: HER3

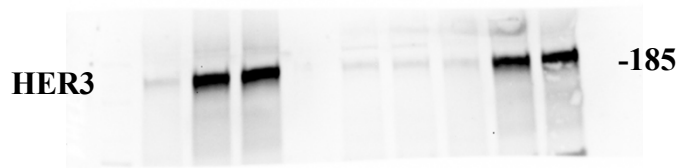


Fig. 6A: Actin

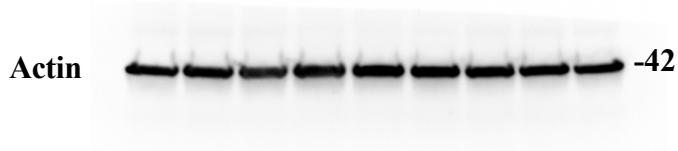


Fig. 6E: OE19 Tumors, HER3 blot

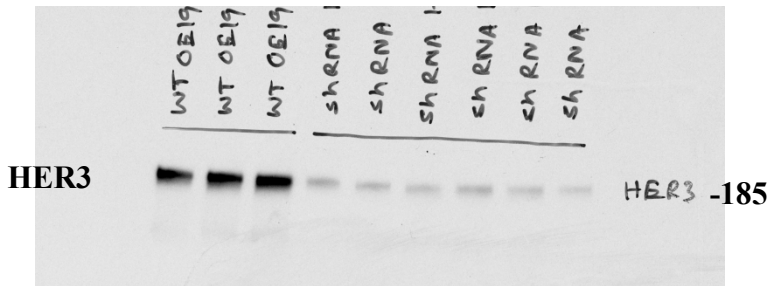


Fig. 6E: OE Tumors, Actin blot

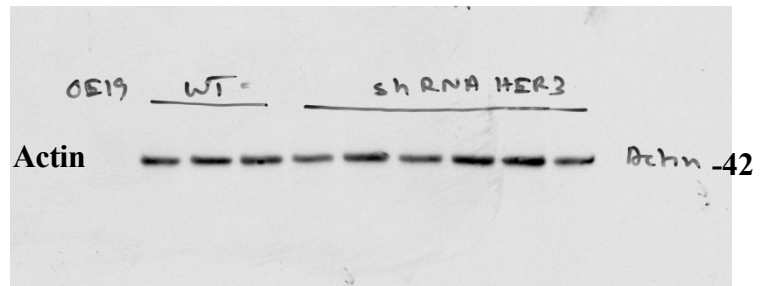


Fig. 6E: H2170 Tumors, HER3 blot

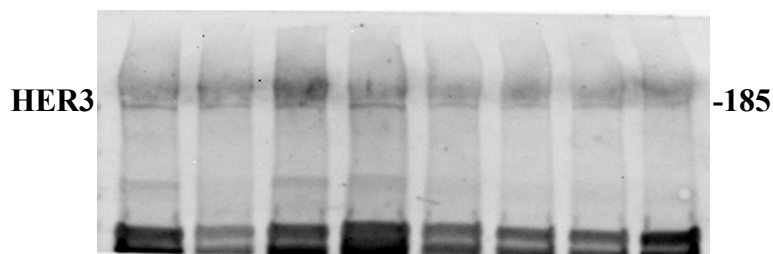


Fig. 6E: H2170 Tumors, Actin blot

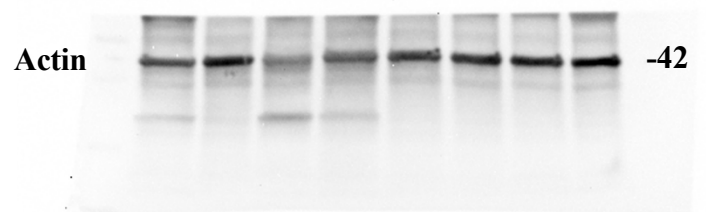


Fig. 6E: N87 Tumors, HER3 blot

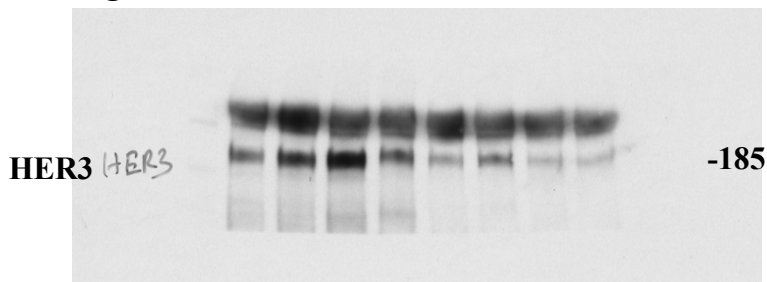


Fig. 6E: N87 Tumors, Actin blot

