

# Supplementary Figure 1. Uncropped gel images with size marker indications

Figure 3g

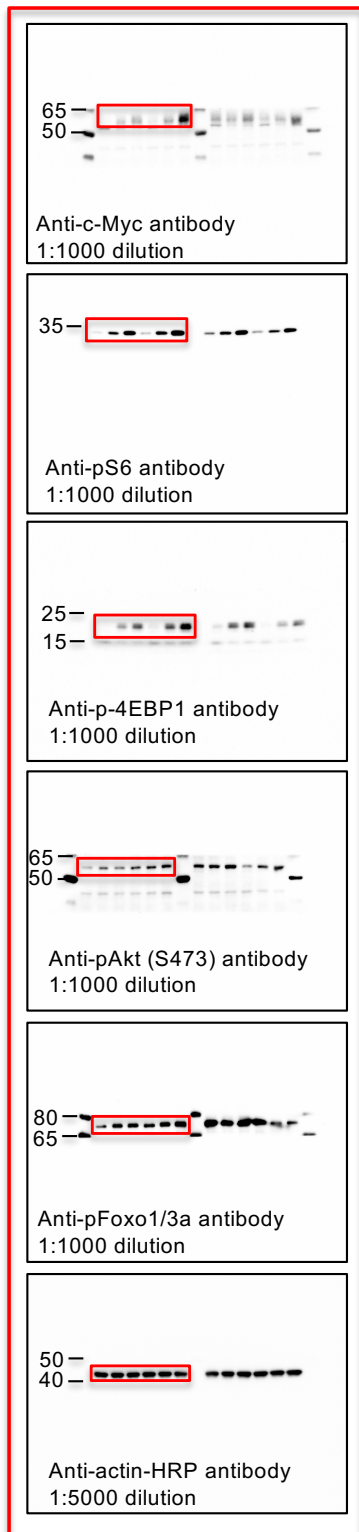


Figure 3h

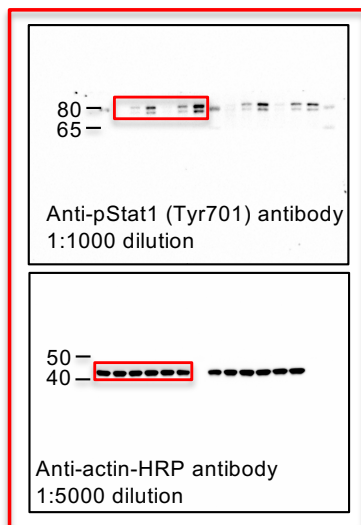
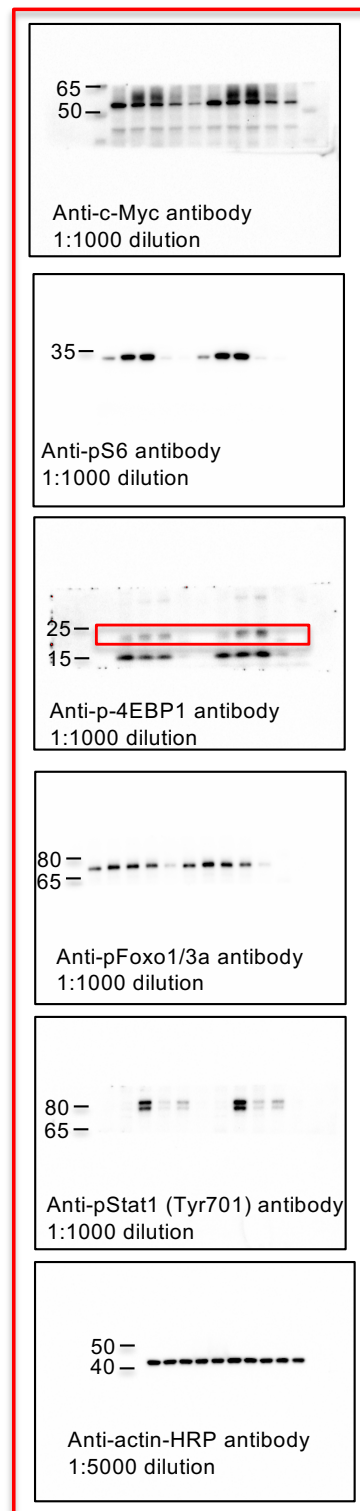


Figure 3i



Supplementary Figure 1. Uncropped gel images with size marker indications (continued)

Figure 4h

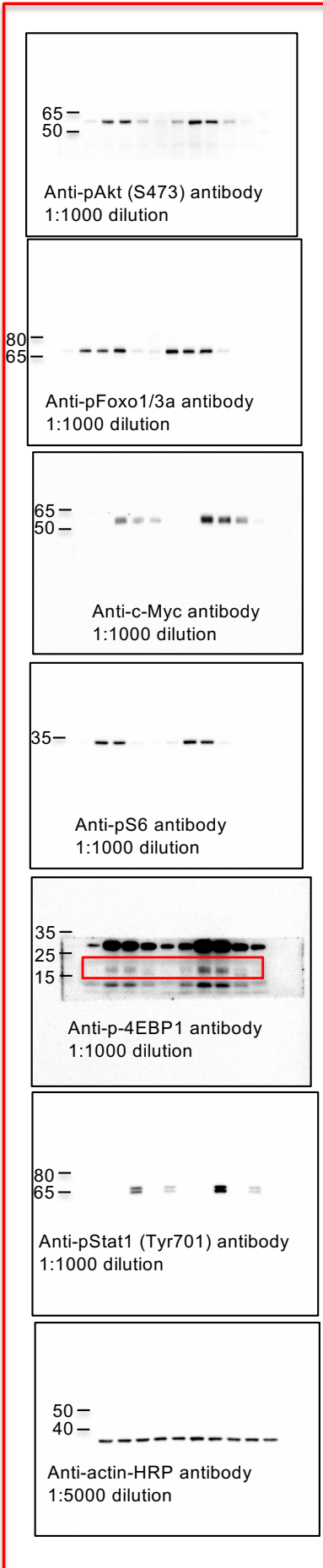


Figure 4j

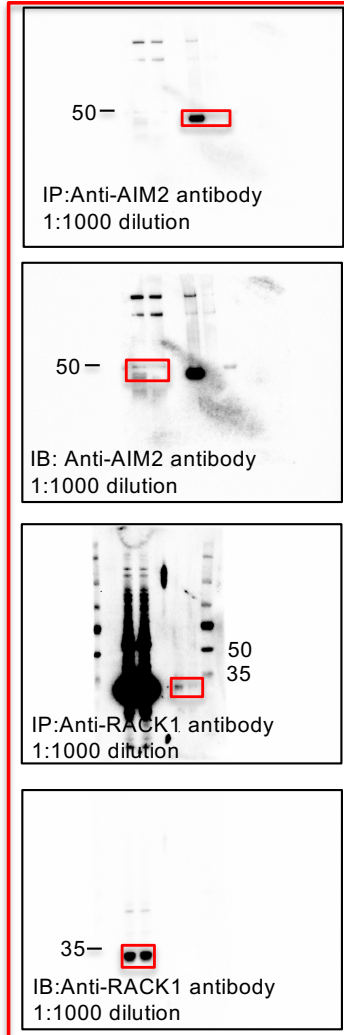
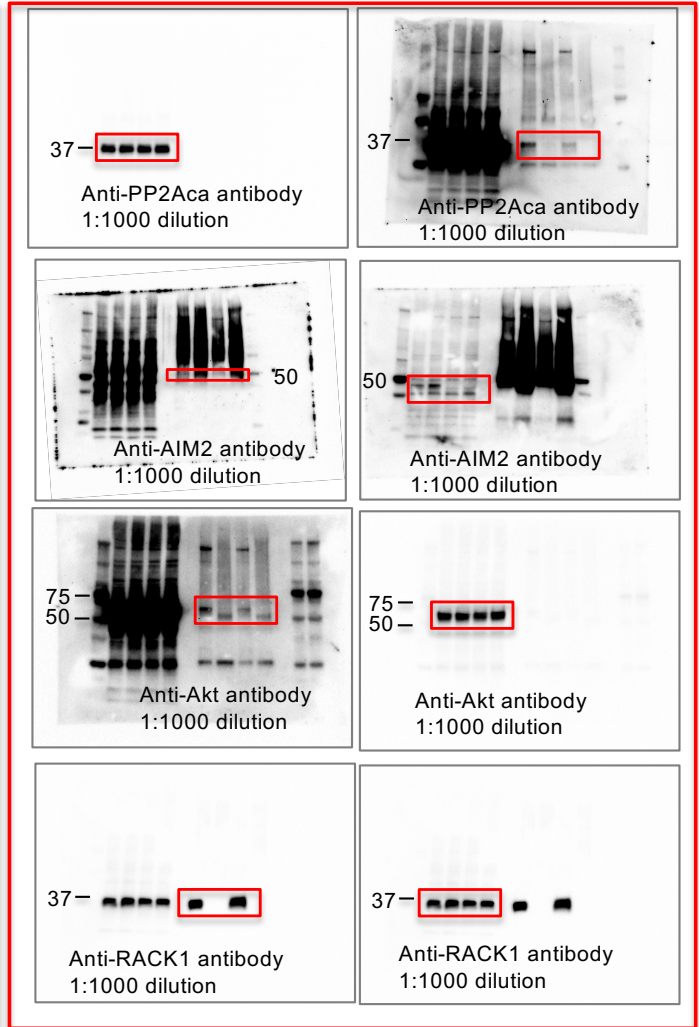
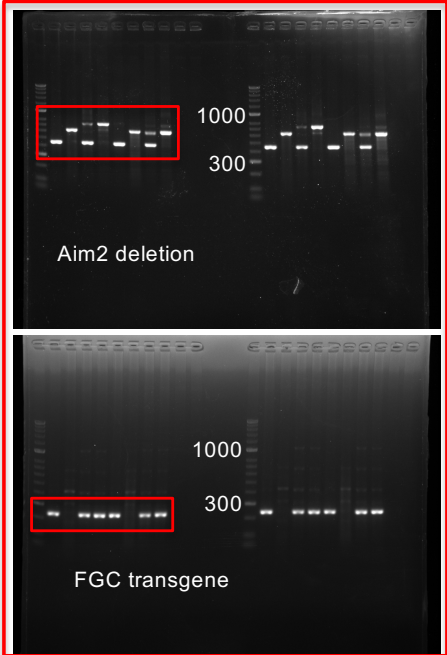


Figure 4k

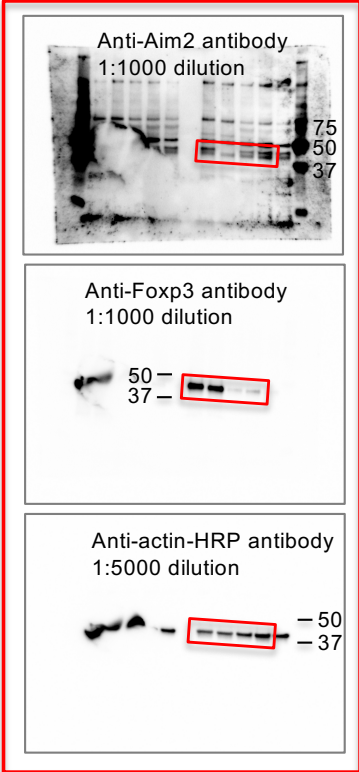


Supplementary Figure 1. Uncropped gel images with size marker indications (continued)

Extended Data Figure 5a

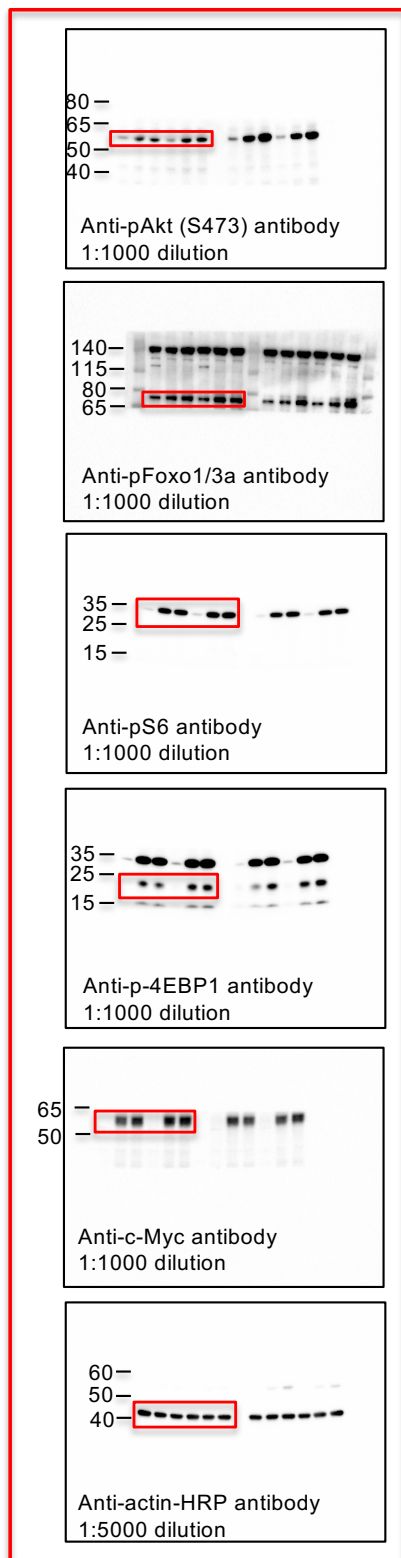


Extended Data Figure 5b

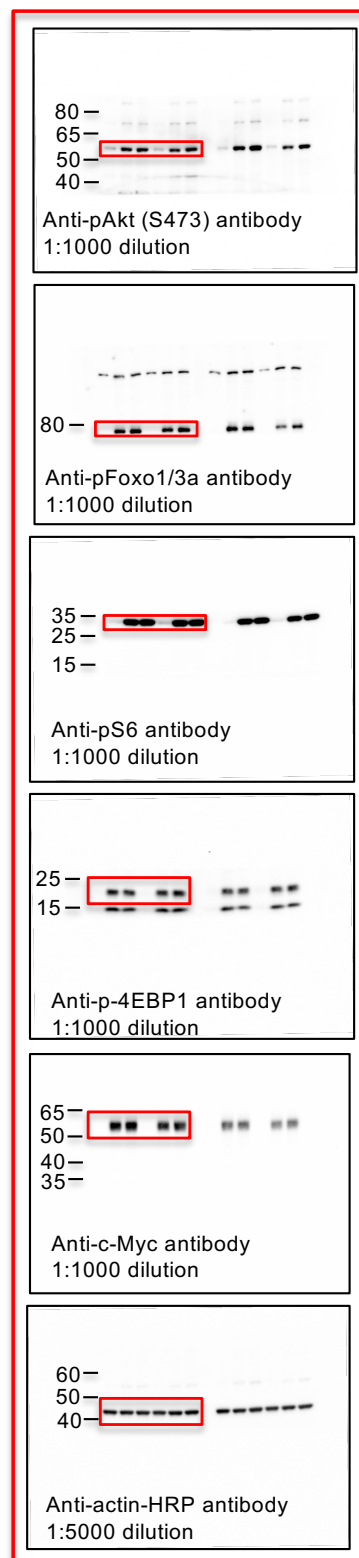


# Supplementary Figure 1. Uncropped gel images with size marker indications (continued)

## Extended Data Figure 9a

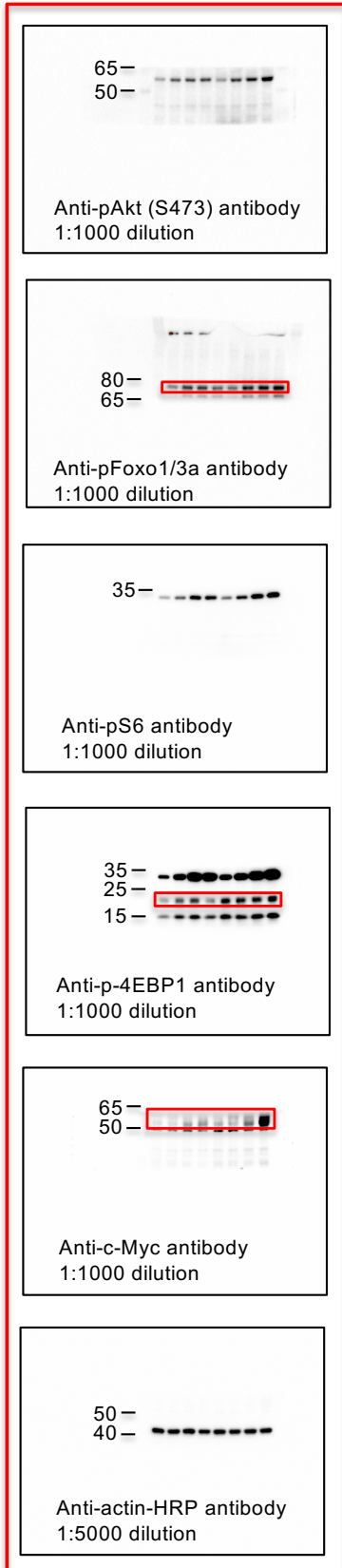


## Extended Data Figure 9b

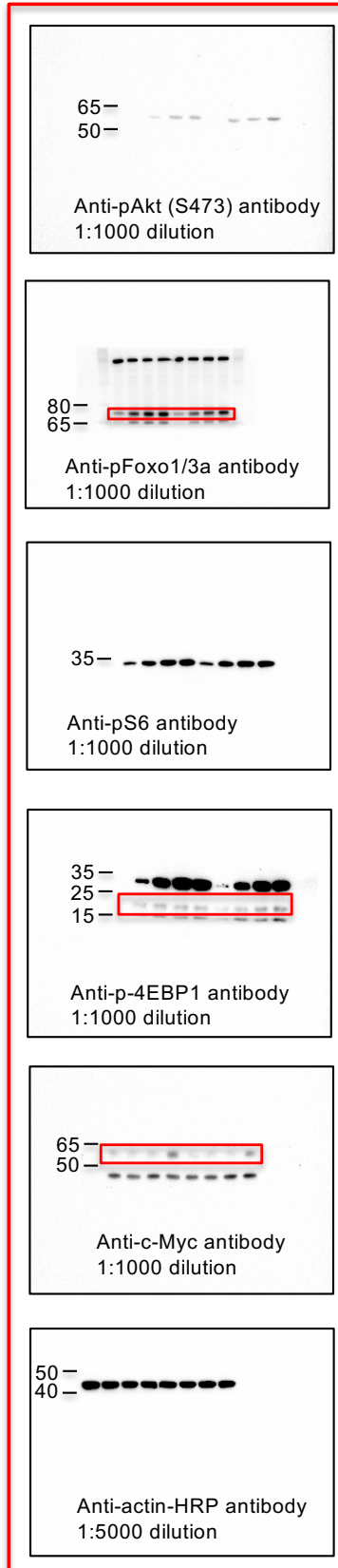


Supplementary Figure 1. Uncropped gel images with size marker indications (continued)

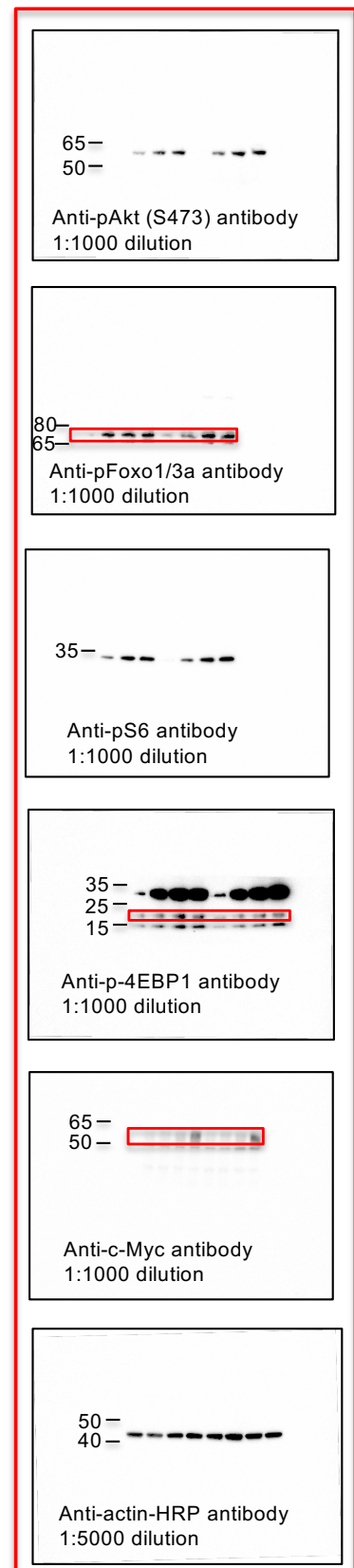
Extended Data Figure 9c



Extended Data Figure 9d

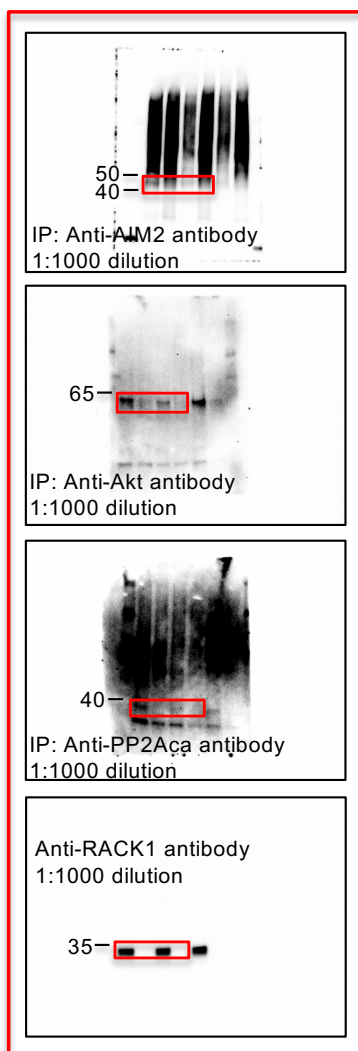
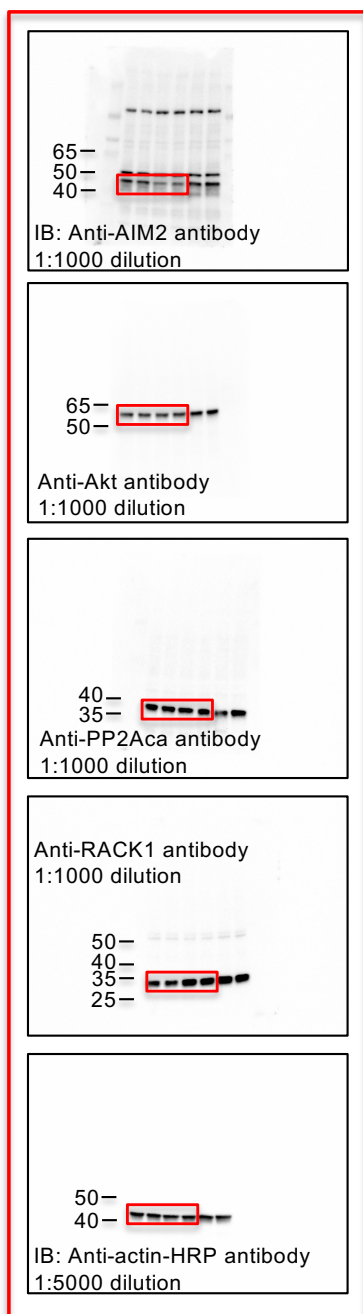


Extended Data Figure 9e



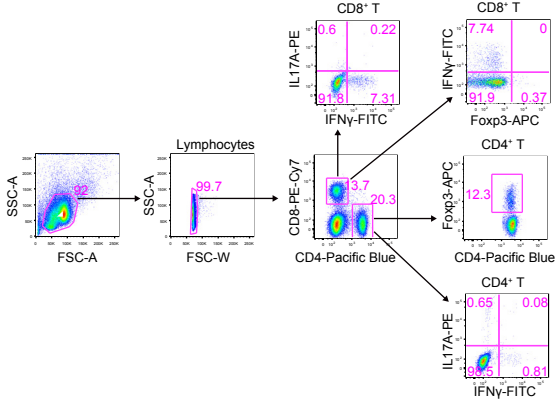
# Supplementary Figure 1. Uncropped gel images with size marker indications (continued)

Extended Data Figure 10c

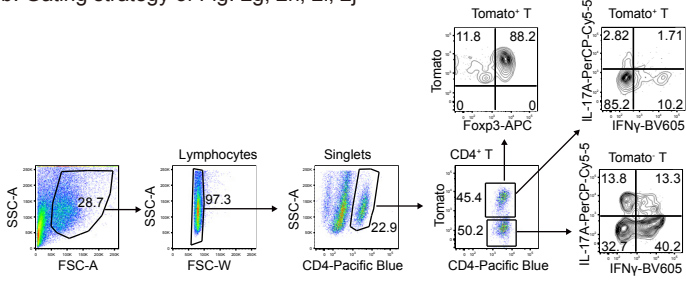


# Supplementary Figure 2. Gating strategies for flow cytometry analysis

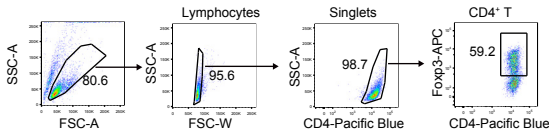
a. Gating strategy of Fig. 1f, 1g, 1i and Extended Data Fig. 1a, 1b, 2h, 2i 2j



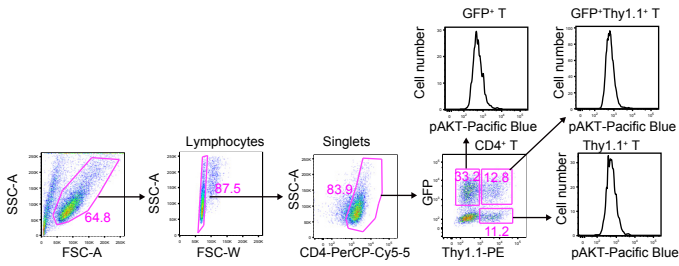
b. Gating strategy of Fig. 2g, 2h, 2i, 2j



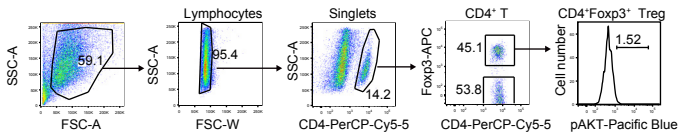
c. Gating strategy of Fig. 4b, Extended Data Fig. 10a



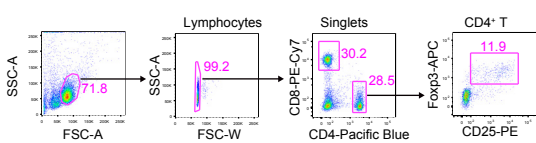
d. Gating strategy of Fig. 4l and Extended Data Fig. 10d, e



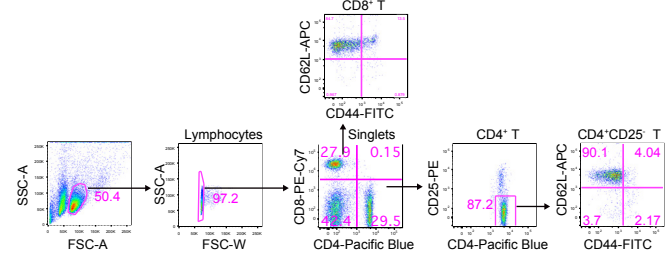
e. Gating strategy of Fig. 4m



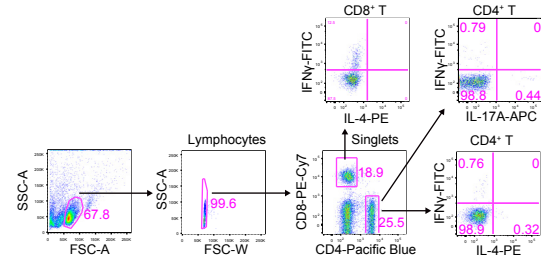
f. Gating strategy of Extended Data Fig. 1c



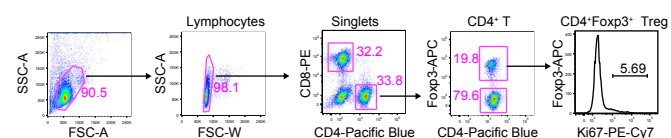
g. Gating strategy of Extended Data Fig. 1e, 1f



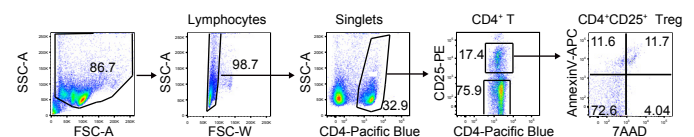
h. Gating strategy of Extended Data Fig. 1g, 1h



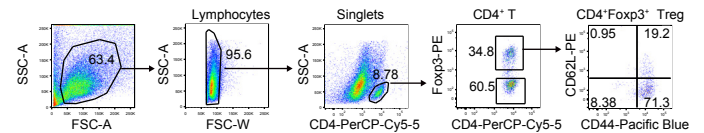
i. Gating strategy of Extended Data Fig. 2a, 2c, 5l, 5n



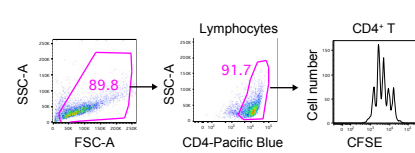
j. Gating strategy of Extended Data Fig. 2b, 2d, 5m, 5o



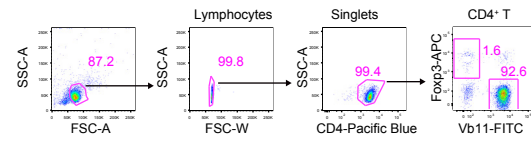
k. Gating strategy of Extended Data Fig. 2e



l. Gating strategy of Extended Data Fig. 2f, 2g

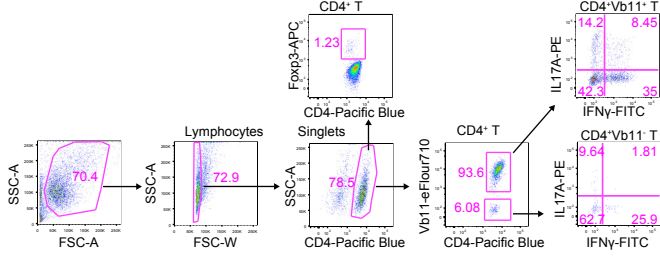


m. Gating strategy of Extended Data Fig. 4g

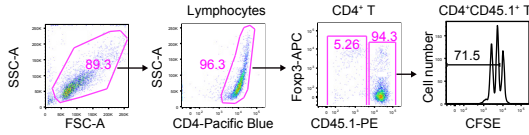


# Supplementary Figure 2. Gating strategies for flow cytometry analysis (continued)

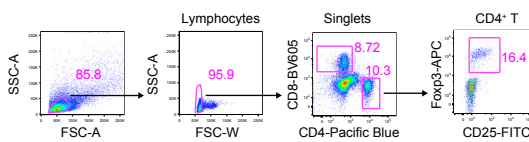
n. Gating strategy of Extended Data Fig. 4i, j, k



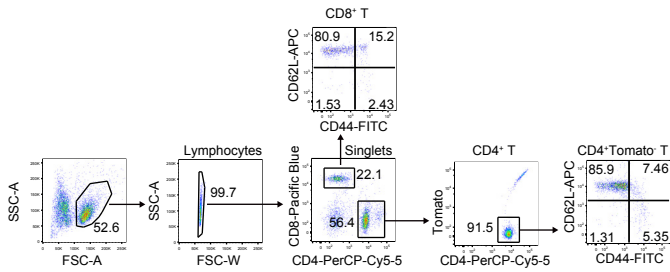
o. Gating strategy of Extended Data Fig. 4l



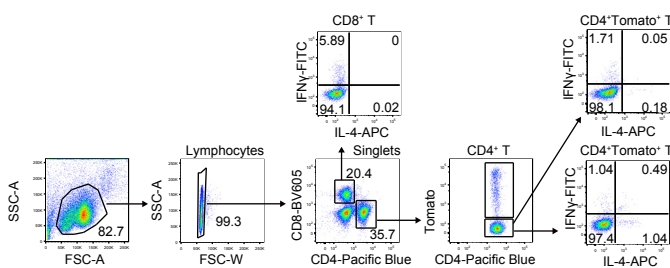
p. Gating strategy of Extended Data Fig. 5d



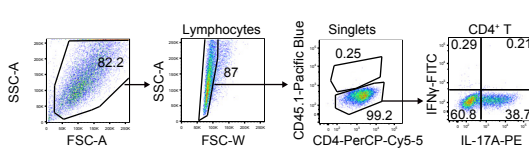
q. Gating strategy of Extended Data Fig. 5e, 5f, 5g



r. Gating strategy of Extended Data Fig. 5h, 5i

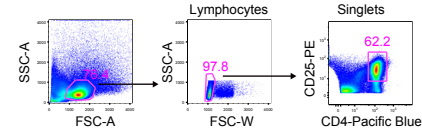


s. Gating strategy of Extended Data Fig. 7a

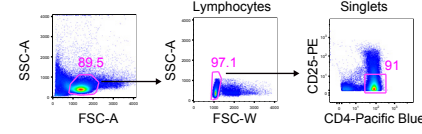


t. Gating strategy of FACS sorting of CD4+CD25+ Treg, CD4+ 2D2 T, and CD4+CD25-CD45RB<sup>hi</sup> naive T clls

For CD4+CD25+ Tregs



For CD4+CD25- 2D2 T cells



For CD4+CD25-CD45RB<sup>hi</sup> naive T cells

