

FIGURE S3A-S3I | MS-MS of major phytoconstituents identified from the plant extract.

Compound 5.67_187.0634n (trans-3-Indoleacrylic acid)

Help

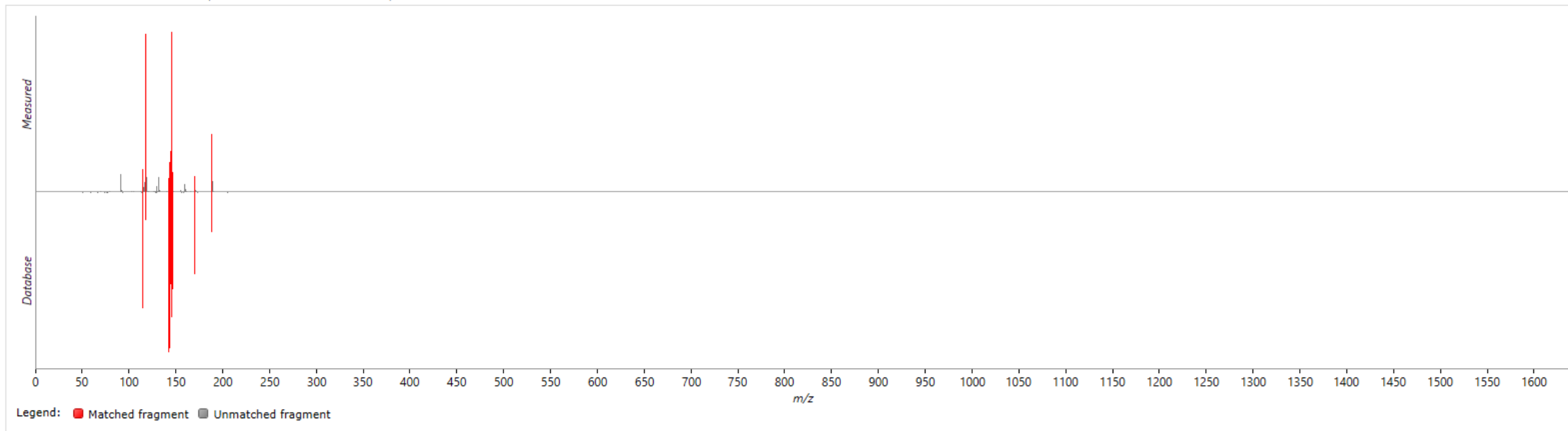


FIGURE S3A | MS-MS of trans-3-Indoleacrylic acid.

Compound 4.61_165.0791n (L-phenylalanine)

Help ▾

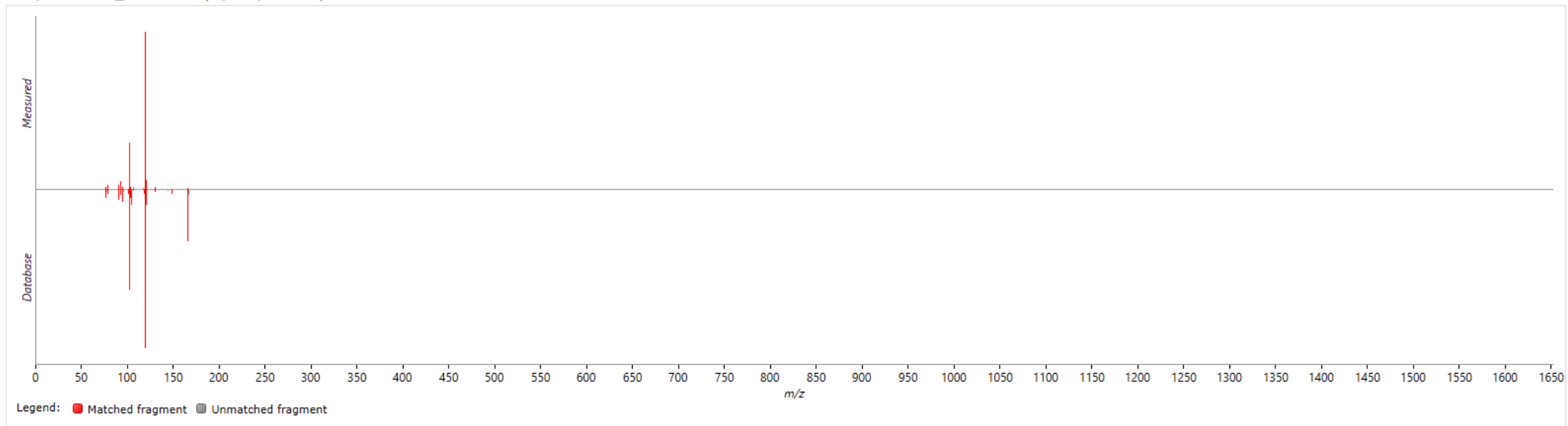


FIGURE S3B | MS-MS of L-phenylalanine.

Compound 0.72_133.0740n (N-Methylthreonine)

Help

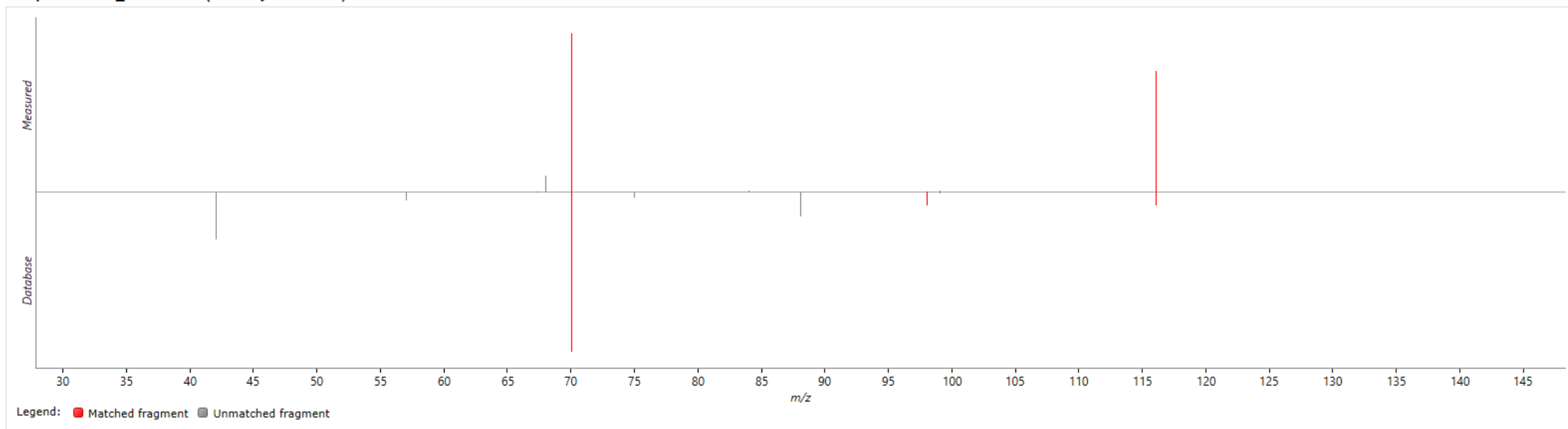


FIGURE S3C | MS-MS of N-Methylthreonine.

Compound 9.80_316.2848m/z Dehydrophytosphingosine

Help

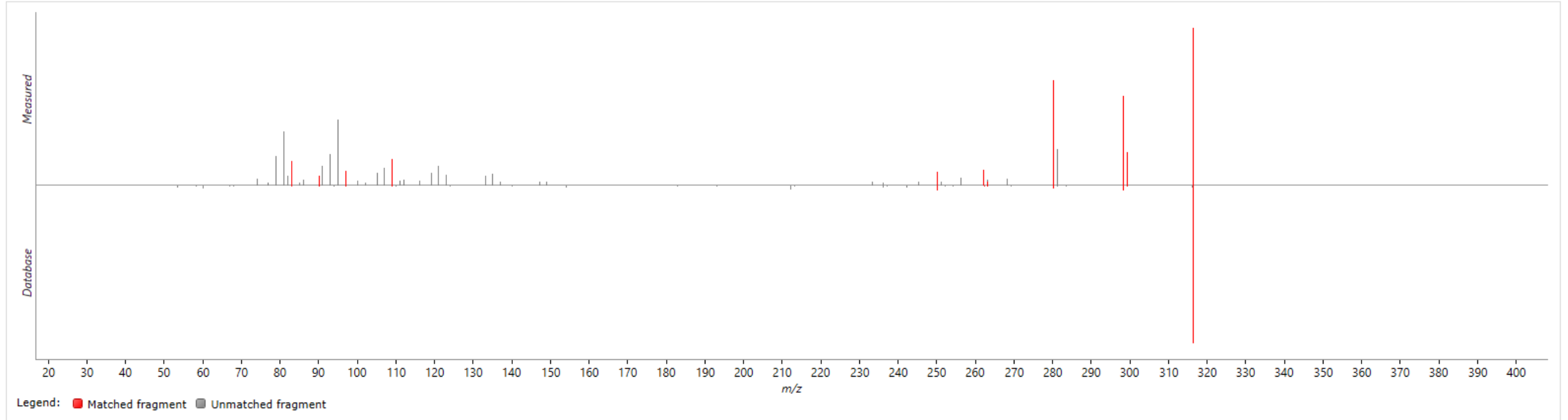


FIGURE S3D | MS-MS of Dehydrophytosphingosine.

Compound 11.57_309.1721m/z ((2S)-2-[(1S)-1-carboxyundecyl]-5-oxotetrahydrofuran-2-carboxylic acid)

Help

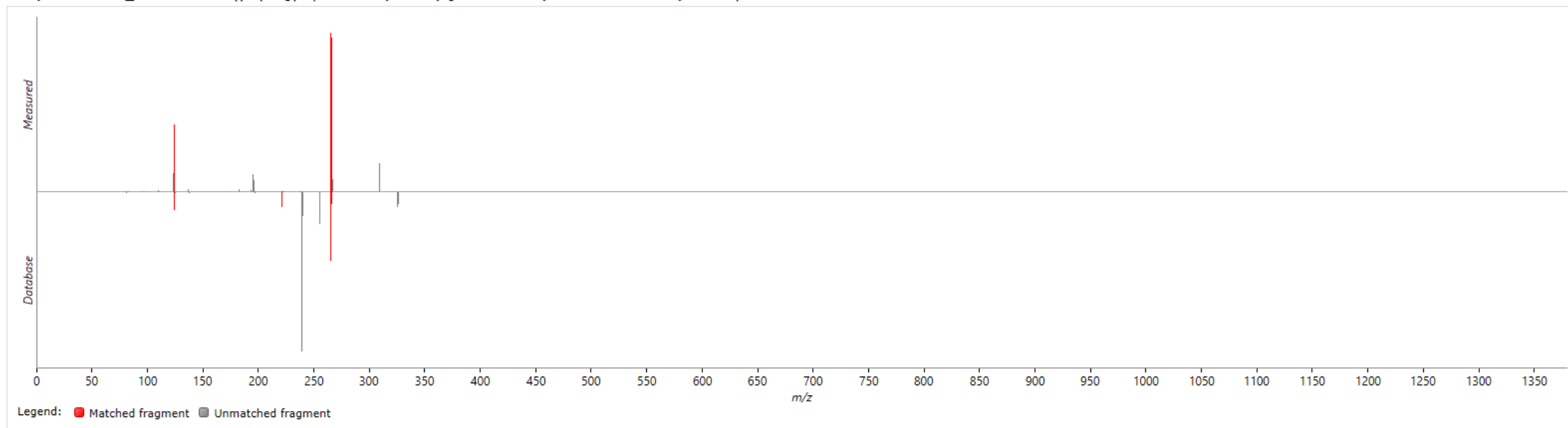


FIGURE S3E | MS-MS of ((2S)-2-[(1S)-1-carboxyundecyl]-5-oxotetrahydrofuran-2-carboxylic acid).

Compound 7.72_166.0631n (3-phenyllactic acid)

Help

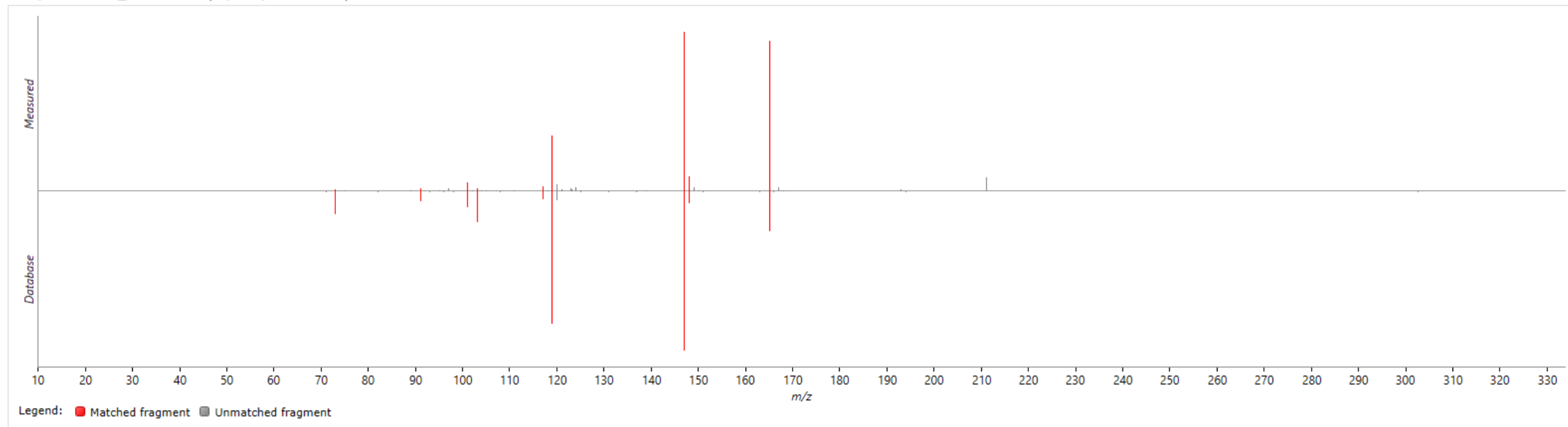


FIGURE S3F | MS-MS of 3-phenyllactic acid.

Compound 8.50_188.1051n (AZELATE)

Help

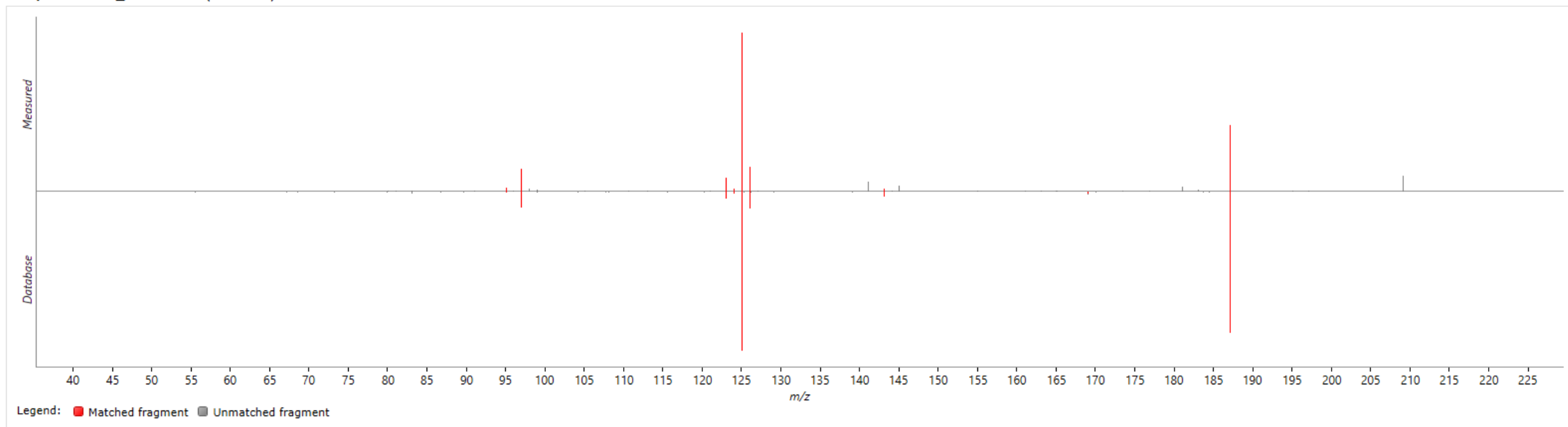


FIGURE S3G | MS-MS of AZELATE.

Compound 8.21_208.0739n (3,5-Dimethoxycinnamic acid)

Help

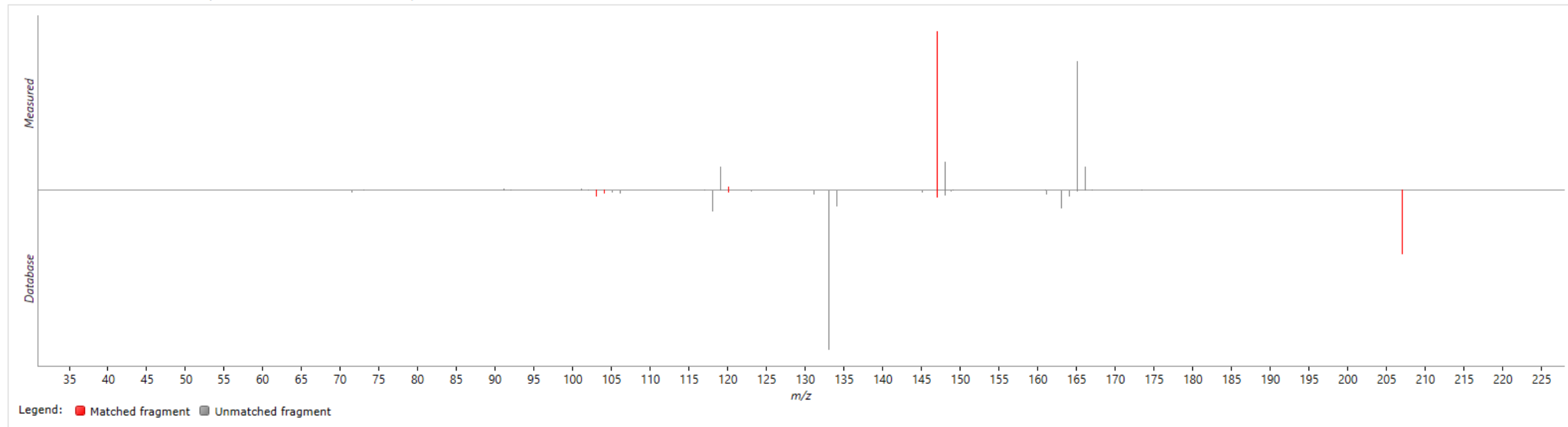


FIGURE S3H | MS-MS of 3,5-Dimethoxycinnamic acid.

Compound 8.21_147.0452m/z (Cinnamic acid)

[Help](#)

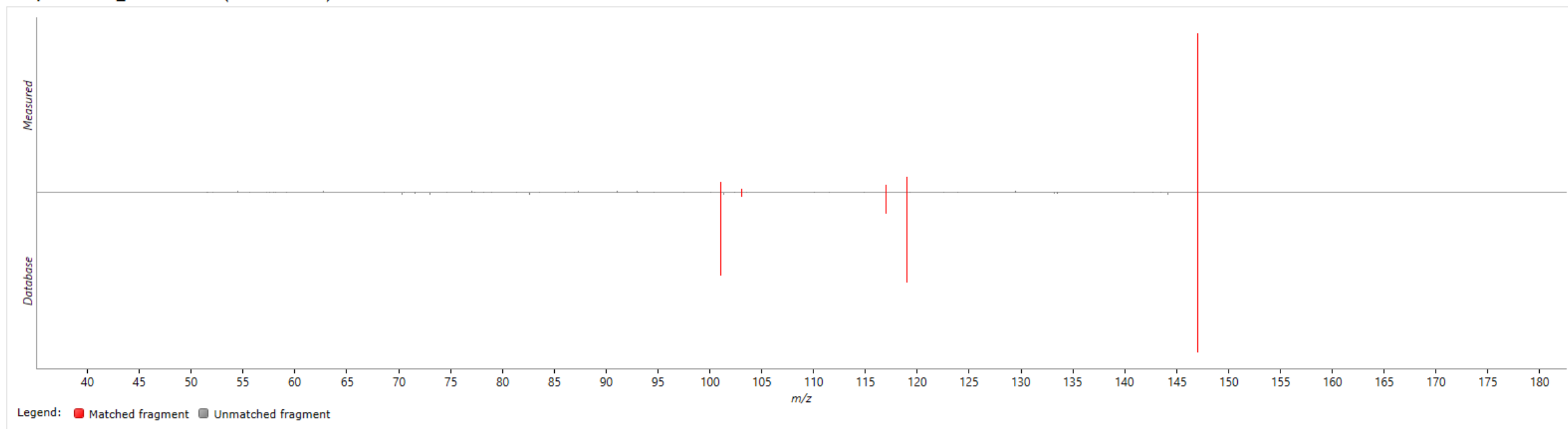


FIGURE S3I | MS-MS of Cinnamic acid.