

# C3 cleavage

Mw [kDa]

180-

107-

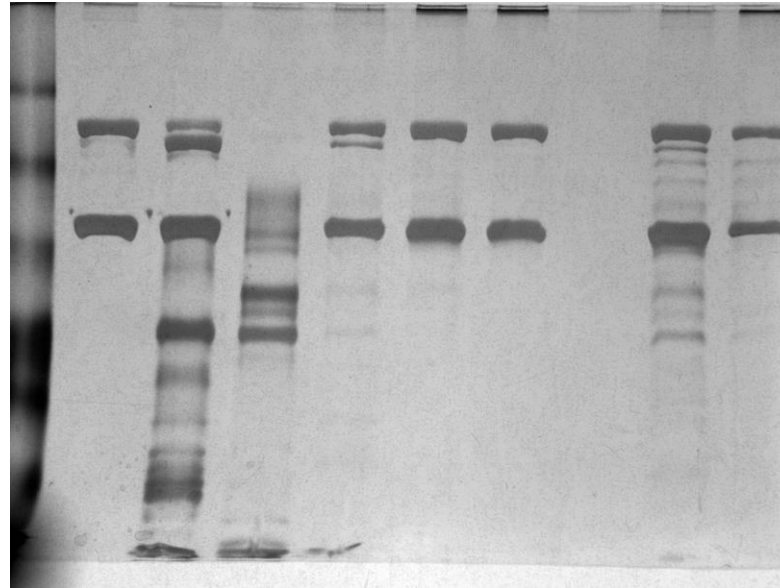
64-

49-

37-

26-

19-



1

2

3

4

5

6

7

-

8

9

## Samples

1- Molecular weight

2- C3 + vehicle (saline)

3- C3 + BjV

4- NaV

5- C3 + NaV

6- C3 + NaV + 1,10 Phe

7- C3 + 1,10 Phe

8- C3 + NaV + PMSF

9- C3 + PMSF

- Without sample

# C4 cleavage

Mw [kDa]

180-

107-

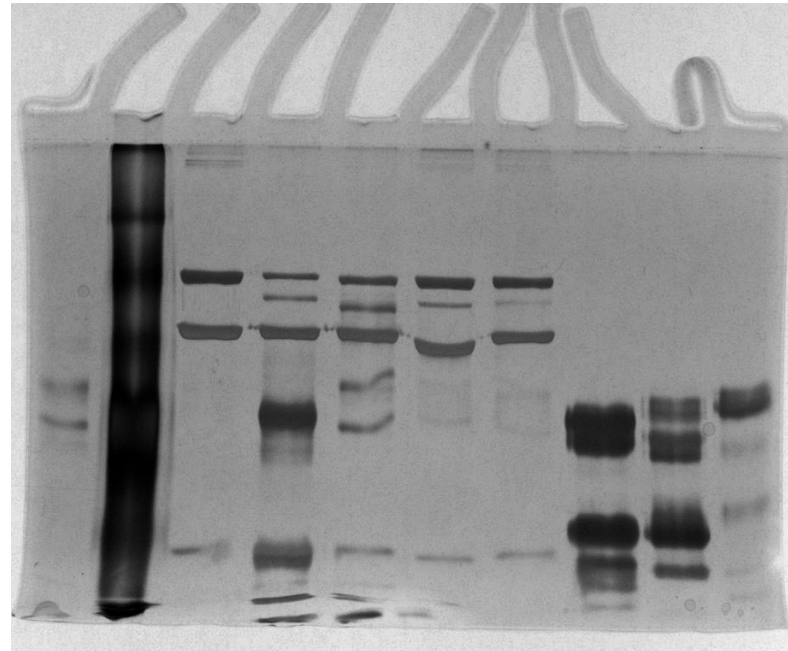
64-

49-

37-

26-

19-



1

2

3

4

5

6

7

-

-

-

**Samples**

**1- NaV**

**2- Molecular weight**

**3- C4 + vehicle**

**4- C4 + BjV**

**5- C4 + NaV**

**6- C4 + NaV + 1,10 Phe**

**7- C4 + NaV + PMSF**

**- Nonrelated samples**

# C5 cleavage

Mw [kDa]

180-

115-

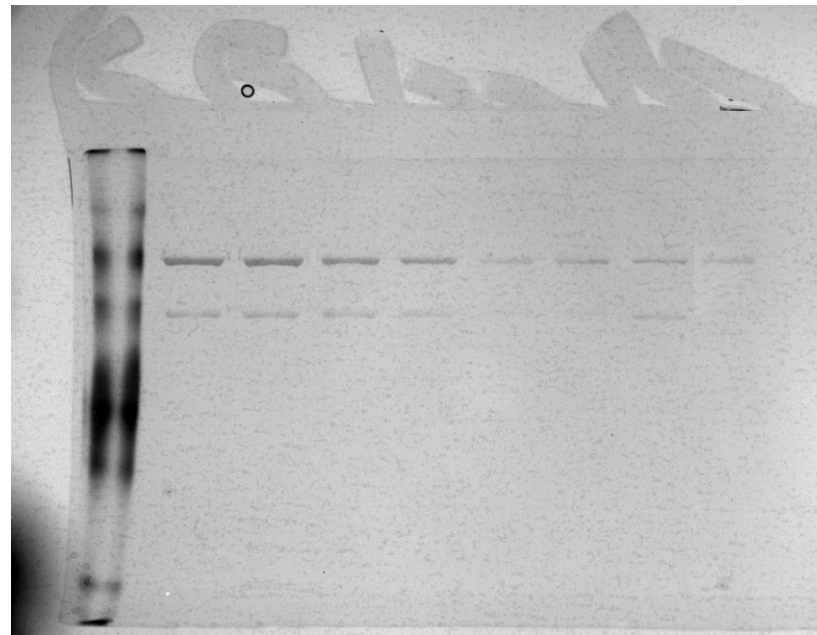
64-

49-

37-

26-

19-



1

2

3

4

5

6

7

8

9

10

Samples

1- Molecular weight

2- C5 + vehicle (saline)

3- C5 + vehicle (ethanol)

4- C5 + NaV

5- C5 + NaV + vehicle (ethanol)

6- C5 + NaV + 1,10 Phe

7- C5 + NaV + 1,10 Phe

8- C5 + NaV + PMSF

9- C5 + NaV + PMSF