

1
2
3
4
5
6
7
8
9
10
11
12
13
14
15
16
17
18
19
20
21
22

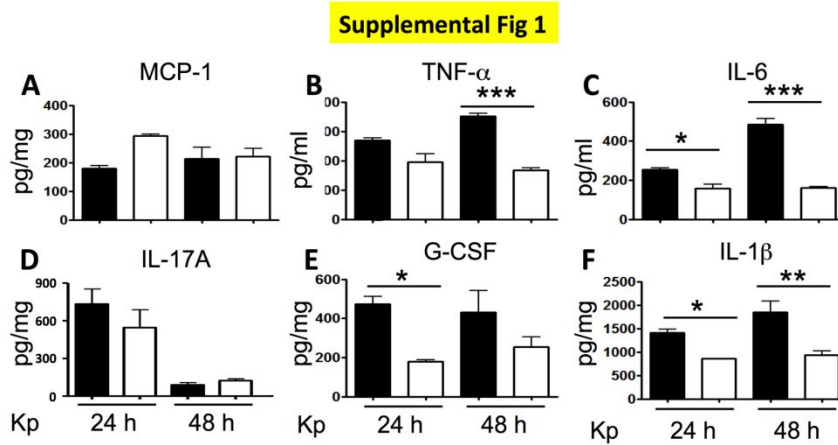
Supplementary Information for

NLRP6 Modulates Neutrophil Homeostasis in Bacterial Pneumonia-Derived Sepsis

Cai et al.,

Corresponding author: Samithamby Jeyaseelan (jey@lsu.edu)

23
 24
 25
 26
 27
 28
 29
 30
 31
 32
 33
 34
 35
 36
 37
 38
 39
 40
 41
 42
 43
 44
 45



Supplemental Figure 1. NLRP6 regulates the production of cytokines/chemokines in Kp-pneumonia-induced sepsis. (A-F) *Nlrp6*^{-/-} and WT mice were infected with Kp (10^3 CFUs/mouse) and BALF and lungs were harvested at 24 and 48 h post-infection. Levels of MCP1 (A), TNF- α (B), IL-6 (C), IL-17A (D), G-CSF (E), and IL-1 β (F) in BALF or lung homogenates were measured. ($n = 4-6$ mice/infection group, $n = 3$ mice/control group) Statistical significance was determined by unpaired *t*-test. *, $p < 0.05$; **, $p < 0.01$; ***, $p < 0.001$. Error bars represent SEM.

46

47

48

49

50

51

52

53 **Supplemental Figure 2. Level of CXCL1 in Kp-infected *Nlrp6*^{-/-} and WT mice. (A-B) *Nlrp6*^{-/-}**54 **^{-/-} and WT mice were infected with Kp (10³ CFUs/mouse). CXCL1 were measured in serum and**55 **lung homogenates. (*n* = 4–6 mice/infection group, *n* = 3 mice/control group) Statistical**56 **significance was determined by unpaired *t*-test. **, *p* < 0.01. Error bars represent SEM.**

57

58

59

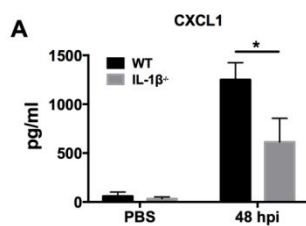
Supplemental Fig 3

60

61

62

63

64 **Supplemental Figure 3. Abundance of CXCL1 in Kp-infected *IL-1β*^{-/-} and WT mice. (A) *IL-***65 ***1β*^{-/-} and WT mice were infected with Kp (10³ CFUs/mouse) and CXCL1 were measured in the**66 **BALF. (*n* = 4–6 mice/infection group, *n* = 3 mice/control group) Statistical significance obtained**67 **by unpaired *t*-test. *, *p* < 0.05. Error bars represent SEM.**

68

69

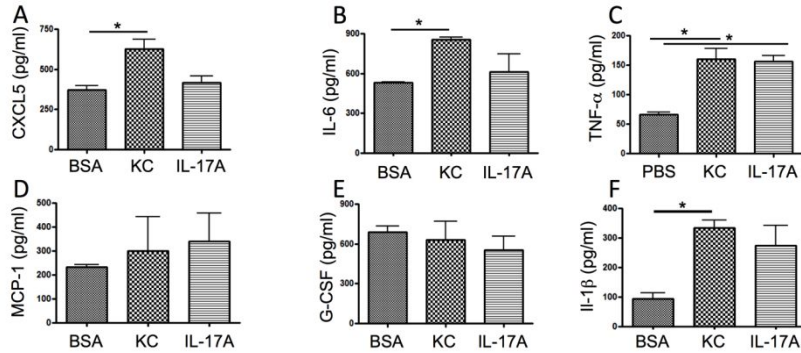
70

71

72

73

Supplemental Fig 4

74 **Supplemental Figure 4. Production of cytokines/chemokines in Kp-pneumonia-induced**75 **sepsis in mice receiving rIL-17A or rCXCL1. (A-F) *Nlrp6*^{-/-} mice were infected with Kp (10³**76 **CFU/mouse) with or without administration of rCXCL1 or rIL-17A or BSA at the time of**77 **infection. Levels of CXCL5 (A), IL-6 (B), TNF- α (C), MCP-1 (D), G-CSF (E), and IL-1 β (F) in**78 **BALF were measured. (*n* = 4–6 mice/group) Statistical significance was determined by ANOVA**79 **(followed by Tukey's multiple comparison). *, *p* < 0.05. Error bars represent SEM.**

80

81

82

83

84