

SUPPLEMENTARY FIGURES

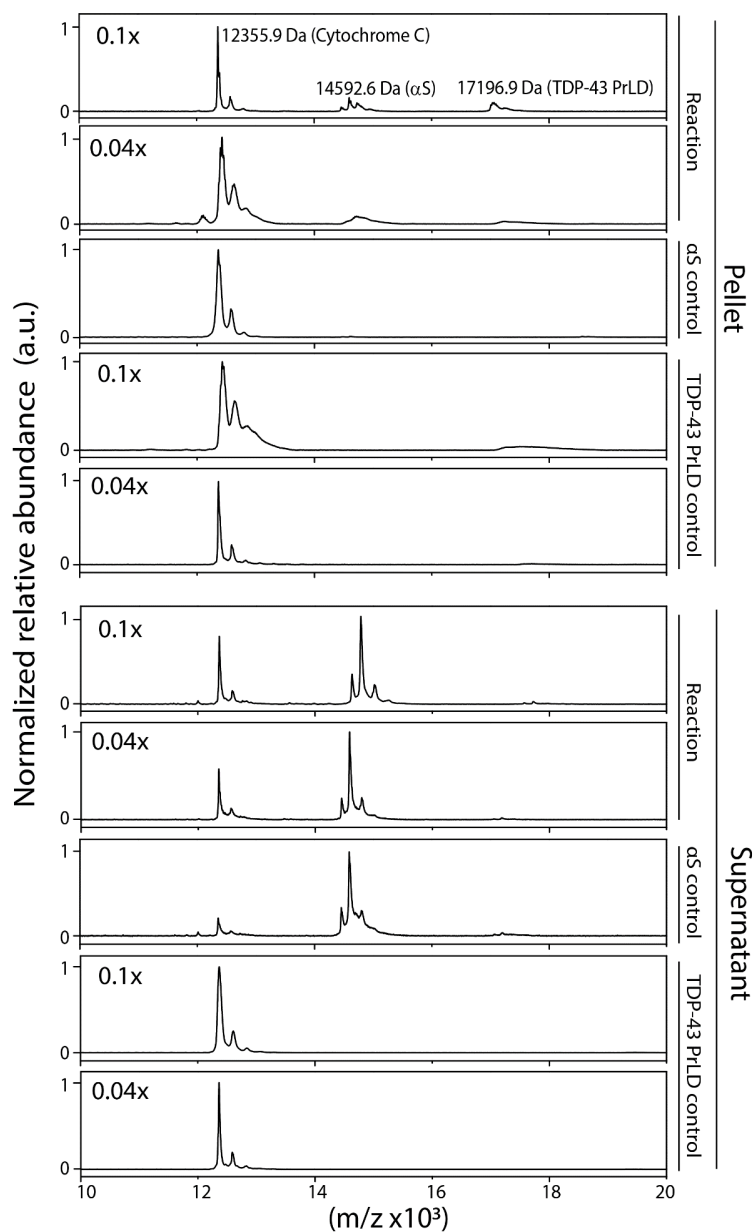


Figure S1. Quantification of α S and TDP-43 PrLD in the supernatant and pellet of reactions in Figure 3 (d,e) by MALDI-ToF. Spectra were obtained after 72 hours, the reaction samples were centrifuged at 18,000 $\times g$ for 20 minutes and analyzed with reference to cytochrome-C as an external standard. (experimental details in materials and methods)

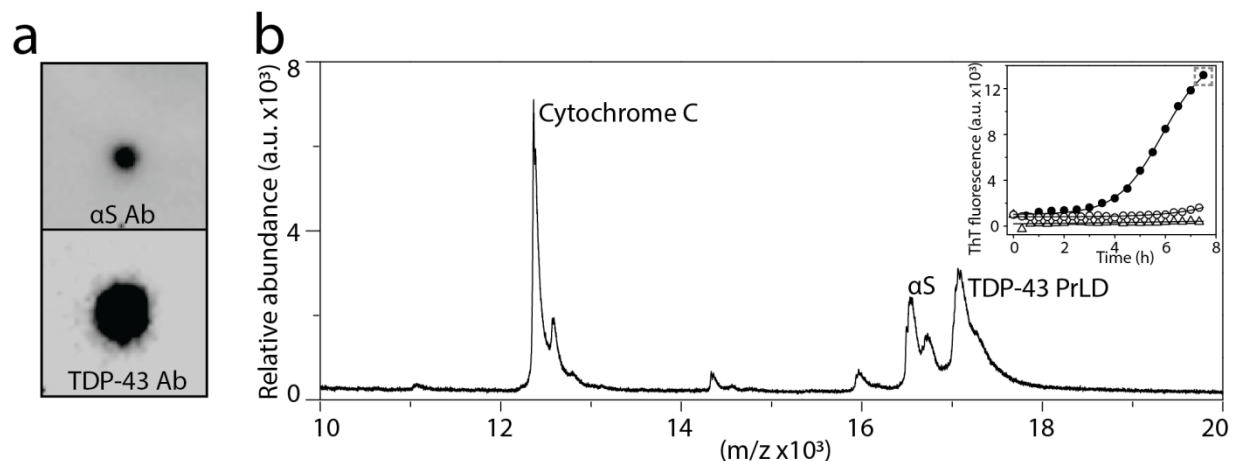


Figure S2. Detection and quantification of hybrid aggregates. a) Dot blot analysis of the pellet of reaction containing 20 μM TDP-43 and 2 μM αS in 20 mM MES buffer pH 6.0. Reactions were incubated at 37 $^{\circ}\text{C}$ for 24 hours, centrifuged at 18,000 $\times g$ for 20 minutes and analyzed using both αS monoclonal antibody and TDP-43 polyclonal antibody (LifeSpan BioSciences, inc.). b) MALDI-ToF of the fibrils from ThT reaction (inset) containing 1:1 ratio of 20 μM TDP-43 PrLD and αS (●) in 20 mM MES buffer pH 6.0 analyzed at 7.5 hours at 37 $^{\circ}\text{C}$, along with αS (Δ) and TDP-43 PrLD (\circ) controls. Reaction was centrifuged at 20,000 $\times g$ for 20 minutes, pellet was washed, and resuspended in MES buffer and analysed in the presence of cytochrome C as an external standard (experimental details in Materials and Methods).