

Pinin promotes prostate cancer progression

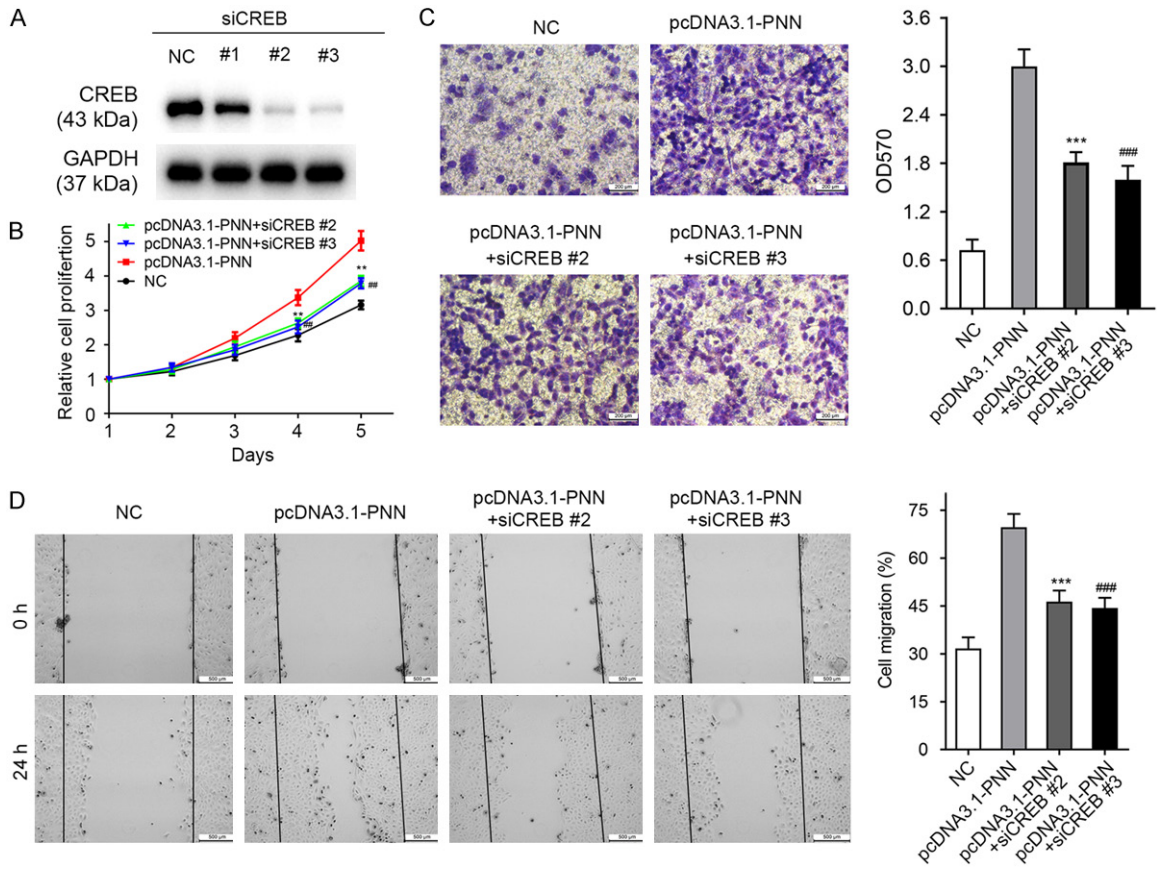


Figure S1. PNN regulates prostate cancer cell proliferation and migration via CREB. A. The protein level of CREB was determined after cells were transfected with siCREB. siCREB #2 and siCREB #3 could knockdown CREB efficiently. B-D. CREB involved in PNN-mediated cell proliferation, invasion and migration. The MTS, transwell, and wound healing assays demonstrated that the PNN overexpression-caused cell phenotype changes could be reversed by CREB knockdown. The scale bar = 200 μ m (C), 500 μ m (D). *** P < 0.001, ### P < 0.001.