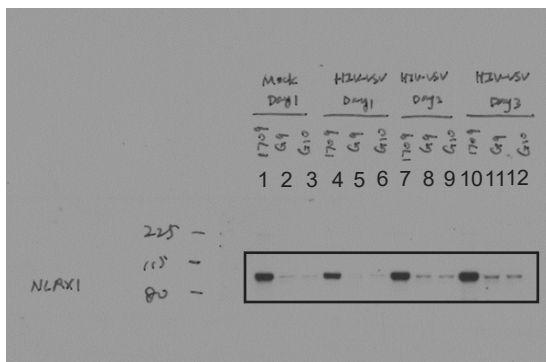
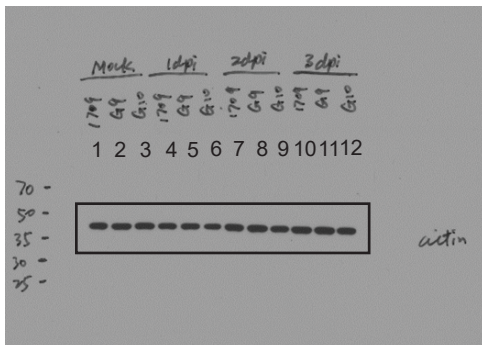


Gag

1. sh-Ctr Mock
2. sh-NLRX1#1 Mock
3. sh-NLRX1#2 Mock
4. sh-Ctr VSV-G-NL4-3-Luc 1 dpi
5. sh-NLRX1#1 VSV-G-NL4-3-Luc 1 dpi
6. sh-NLRX1#2 VSV-G-NL4-3-Luc 1 dpi
7. sh-Ctr VSV-G-NL4-3-Luc 2 dpi
8. sh-NLRX1#1 VSV-G-NL4-3-Luc 2 dpi
9. sh-NLRX1#2 VSV-G-NL4-3-Luc 2 dpi
10. sh-Ctr VSV-G-NL4-3-Luc 3 dpi
11. sh-NLRX1#1 VSV-G-NL4-3-Luc 3 dpi
12. sh-NLRX1#2 VSV-G-NL4-3-Luc 3 dpi



NLRX1



β -actin