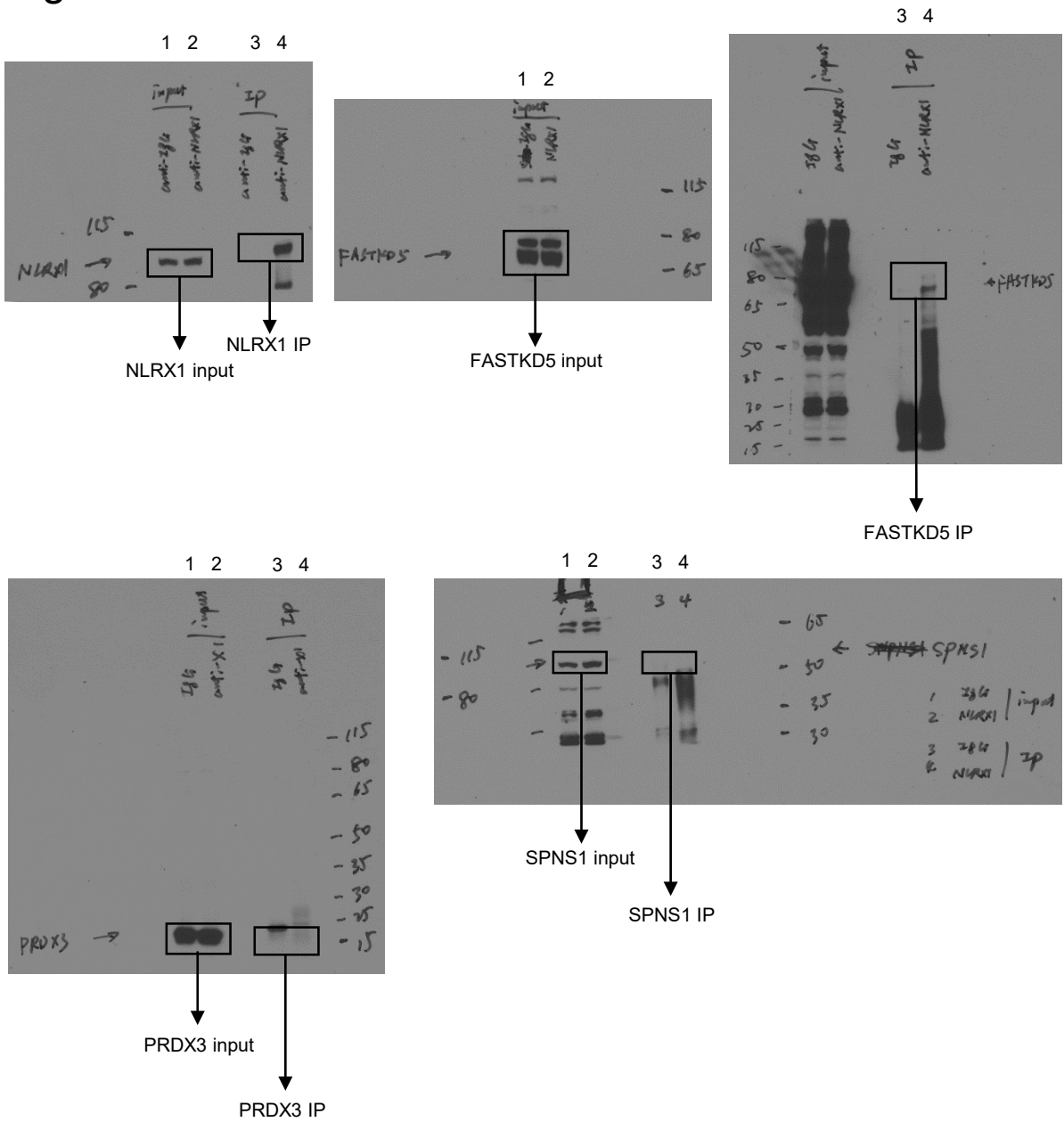
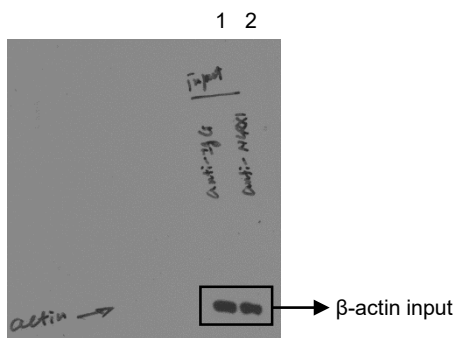
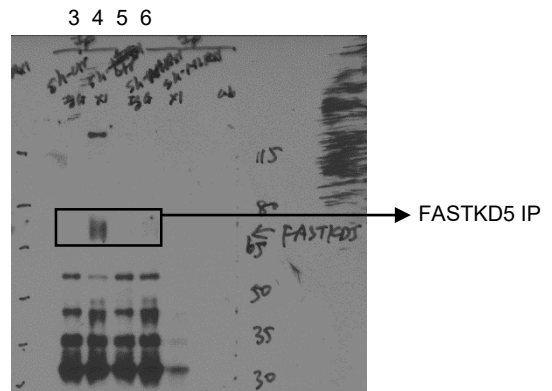
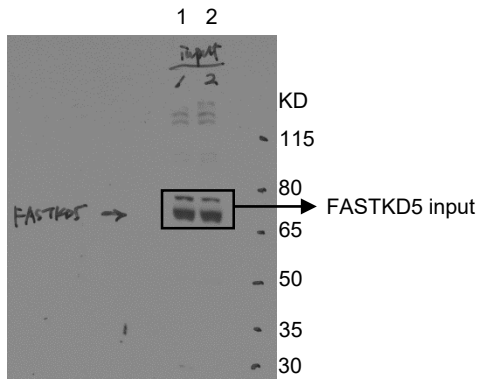
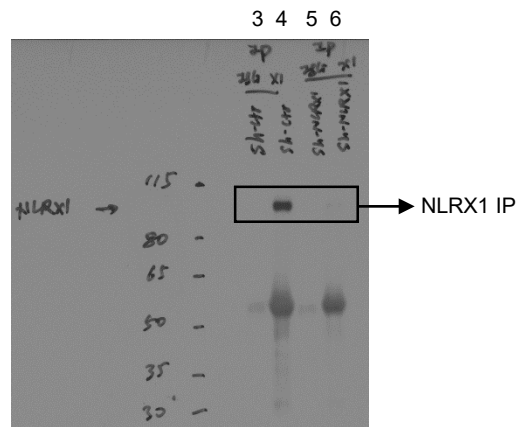
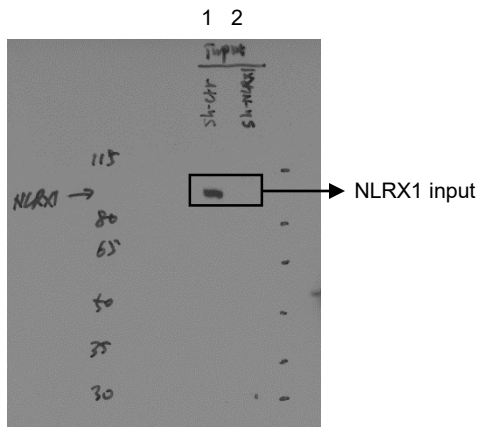


Fig. 6a



1. Input IgG control
2. Input anti-NLRX1
3. IP IgG control
4. IP anti-NLRX1

Fig. 6b



1. Input sh-Ctr
2. Input sh-NLRX1
3. IP sh-Ctr IgG control
4. IP sh-Ctr anti-NLRX1
5. IP sh-NLRX1 IgG control
6. IP sh-NLRX1 anti-NLRX1

Fig. 6c

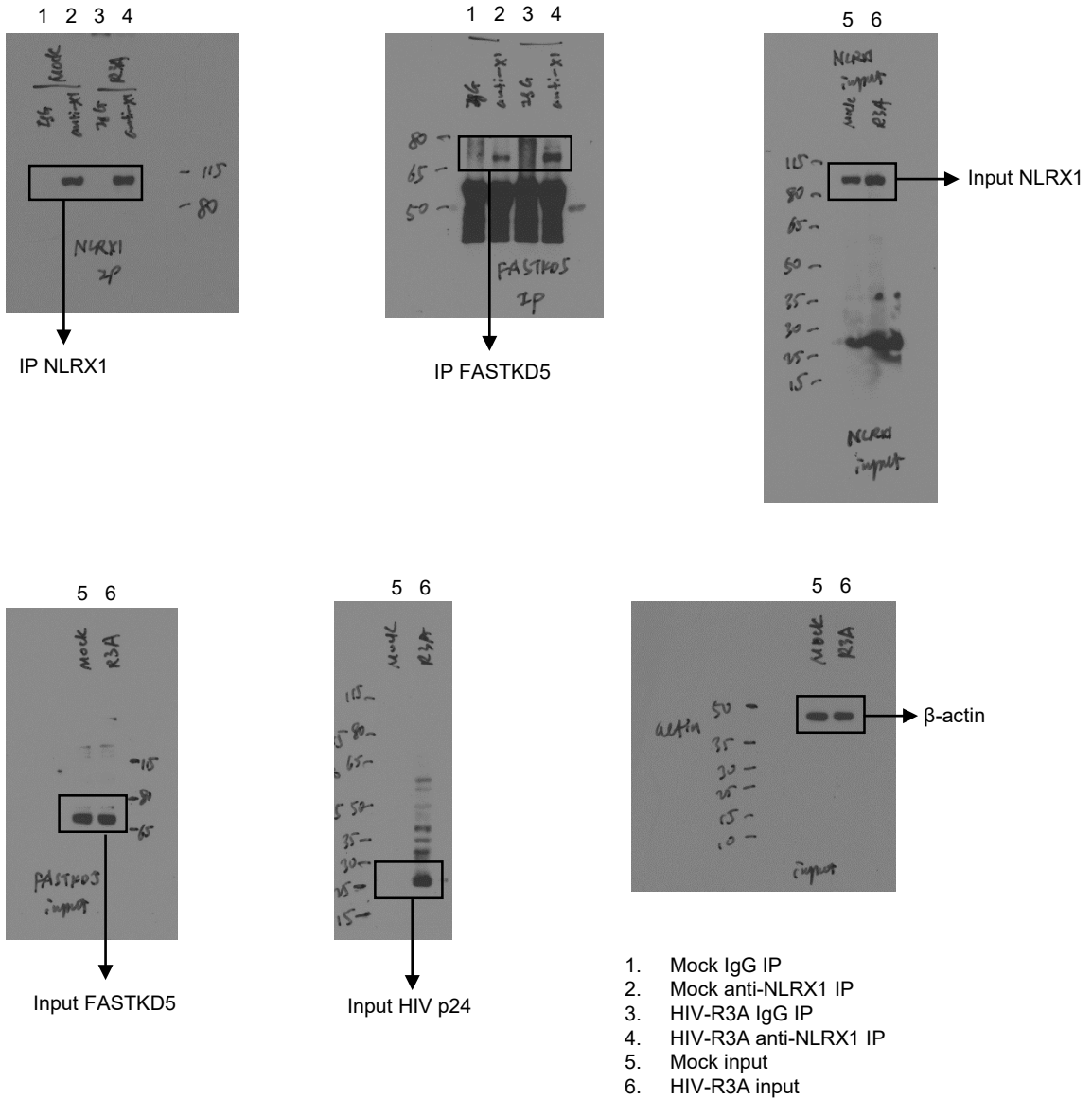
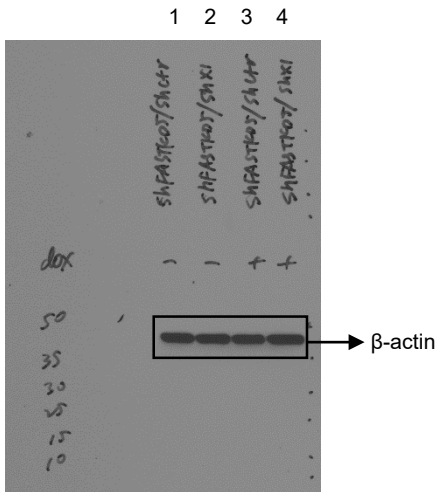
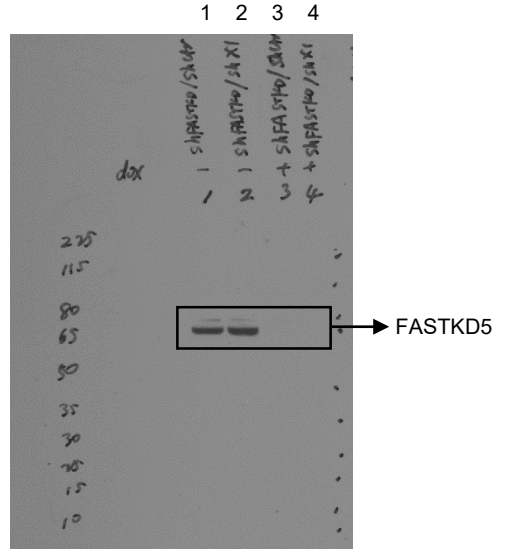
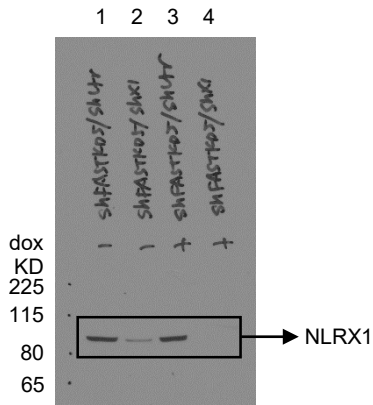


Fig. 6e



1. sh-Ctr + sh-FASTKD5
2. sh-NLRX1 + sh-FASTKD5
3. sh-Ctr + sh-FASTKD5 + doxycycline
4. sh-NLRX1 + sh-FASTKD5 + doxycycline