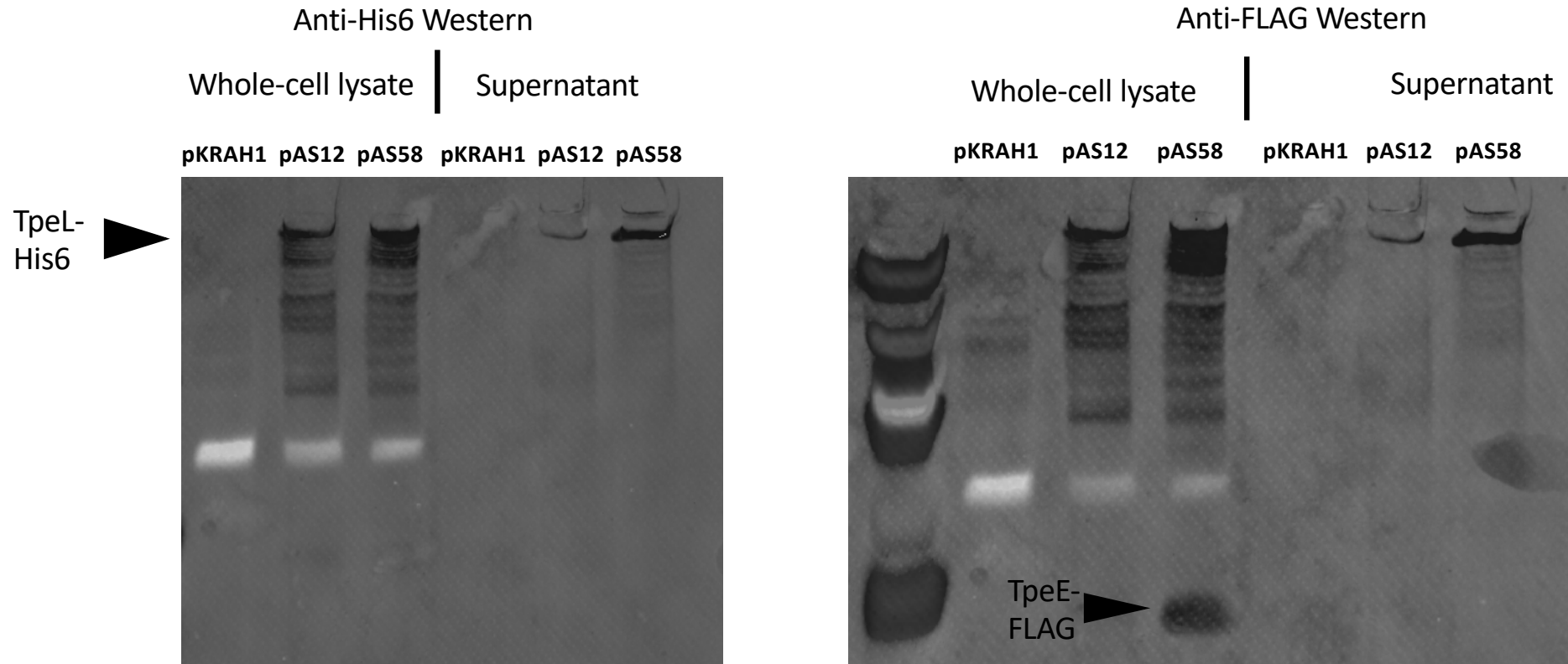


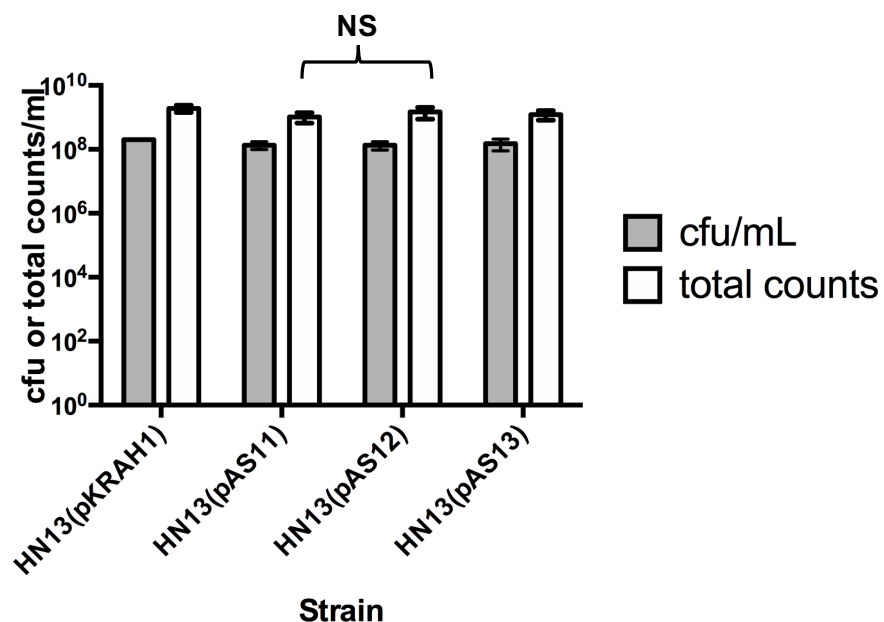
Supplementary Figure 1



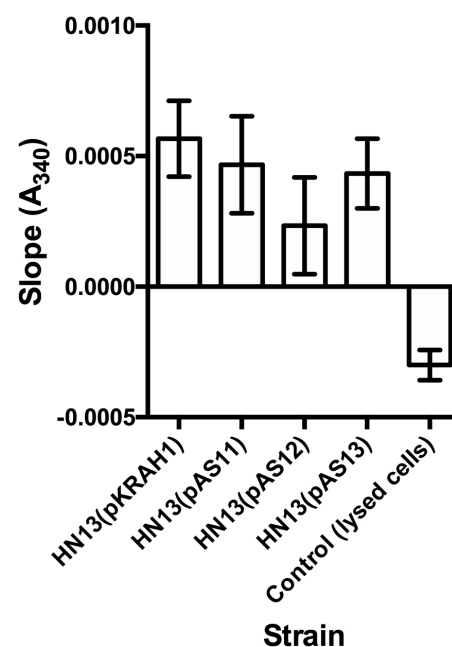
Supplementary Figure 1. The presence of a FLAG tag on TpeE does not affect secretion of TpeL. A strain carrying the pKRAH1 vector with *tpeE-FLAG-tpeL-His₆* (pAS58) secreted as much TpeL-His₆ as did the strain with *tpeE-tpeL-His₆* (pAS12). Left panel, anti-His6 western blot showing the location of TpeL-His₆. Right panel, the same blot was washed and reprobbed with antibodies to the FLAG tag, to identify the presence of TpeE-FLAG in the whole cell lysate.

Supplementary Figure 2

A. Total cell counts & CFU/mL

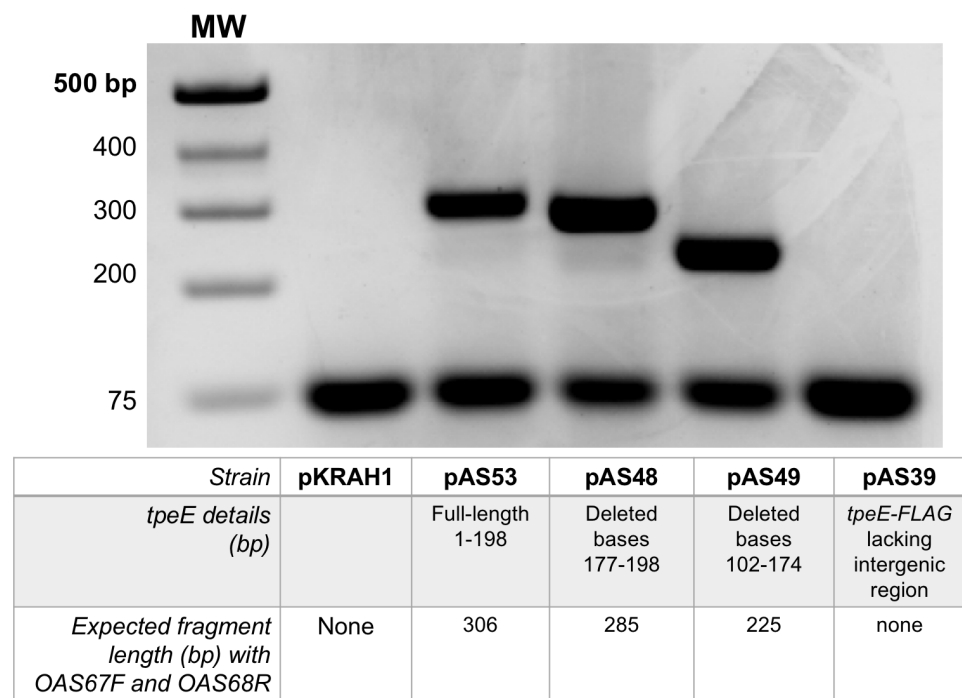


B. Lactate dehydrogenase assay



Supplementary Figure 2. TpeL detected in culture supernatants is not due to significant levels cell lysis. . **A.** Total cell counts/ml and cfu/ml were measured four hours post-induction. Shown are the means and SEM of three independent experiments.. No significant difference in cfu/ml were detected between any strains. Strains carrying the toxin and toxin and holin genes (pAS11 and pAS12, respectively) had lower numbers of total cell counts than the vector only strain (pKRAH1), consistent with the OD600 values seen in the growth curves (Fig. 4A). However, no significant difference in total cell counts was detected between the strain carrying *tpeL* alone (pAS11) and the strain carrying both the toxin and *tpeE* (pAS12), despite the strain carrying pAS12 showing significantly higher levels of secreted TpeL (Fig. 3A). **B.** Cell lysis was quantified by measuring LDH activity (a cytoplasmic enzyme) as a loss in NADH absorbance at 340 nm (NADH to NAD⁺) in supernatant samples. No LDH activity was detected in any of the experimental strains but statistically significant LDH activity was detected in the control samples which contained 20 μ l of lysed cell extract.:

Supplementary Figure 3



Supplementary Figure 3. PCR products using the same primers that were used for RT-PCR. Total DNA was isolated from strain HN13 carrying the indicated plasmid. Note the PCR product sizes match those observed with RT-PCR (Fig. 5B).