

Fig. S1

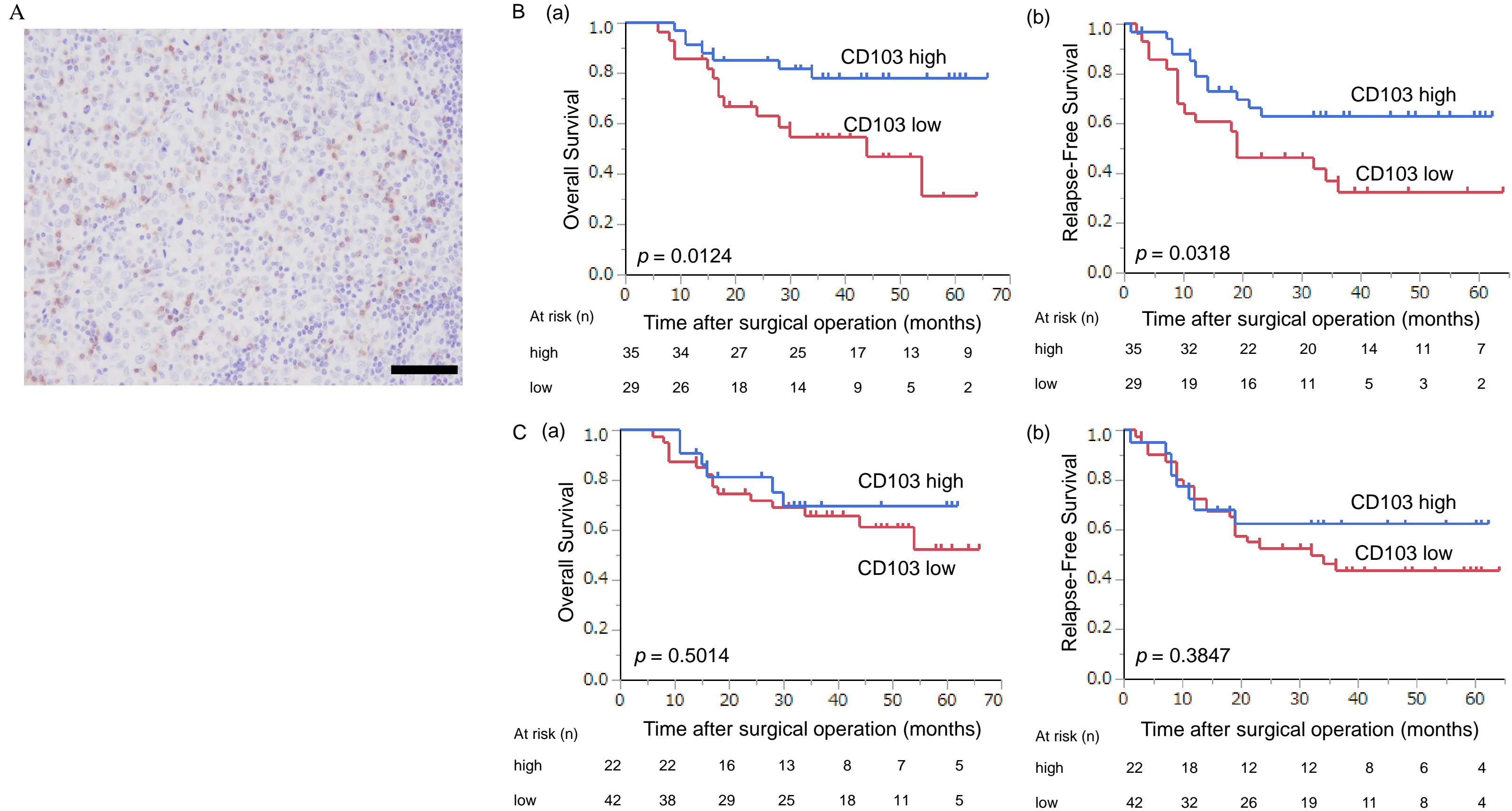


Figure S1 Comparison of the prognostic impact of CD103<sup>+</sup> T cells in the primary tumor and metastatic lymph nodes in patients with pathological N2 or higher (A) Representative image of CD103 staining of metastatic lymph nodes is shown. Scale bar; 50  $\mu$ m. (B) Kaplan-Meier plots using the log-rank test for OS and RFS according to the number of CD103<sup>+</sup> T cells in primary tumors and (C) metastatic lymph nodes. In the primary tumor, patients with CD103 high had a better prognosis than those with CD103 low (a: OS;  $p = 0.0124$ , b: RFS;  $p = 0.0318$ ). On the other hand, in metastatic lymph nodes, no significant difference was present.