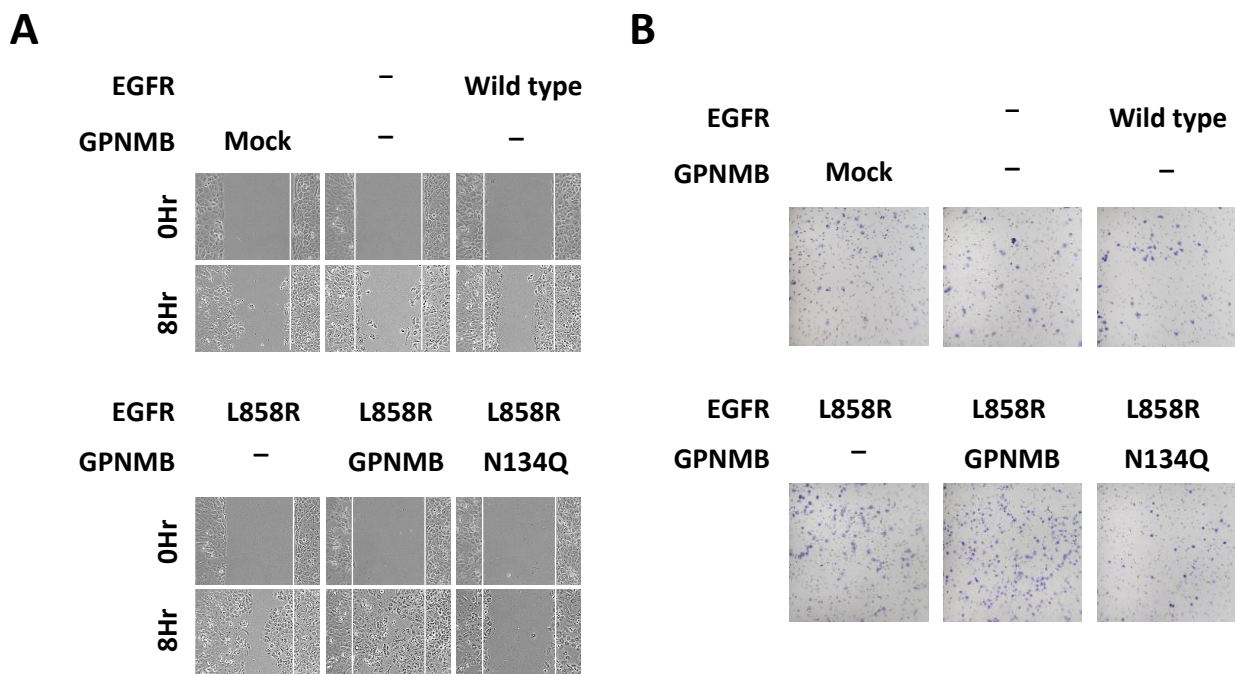


## Figure S4



**Fig. S4. Photos of cell migration and invasion in Fig.4E.** The migratory and invasive abilities of H1299/ mock, H1299/ EGFR-wild-type, H1299/ EGFR-L858R, H1299/ EGFR-L858R+GPNMB-wild-type, and H1299/ EGFR-L858R+GPNMB-N134Q cells were examined by wound healing assay and modified boyden chamber invasion assay. (A) Photos of migration assay were taken at 0h and 8h after removing the chamber; and the migrated cells were counted. (B) Photos of invasion assay were taken after stained with 10% Gemisa Stain solution.