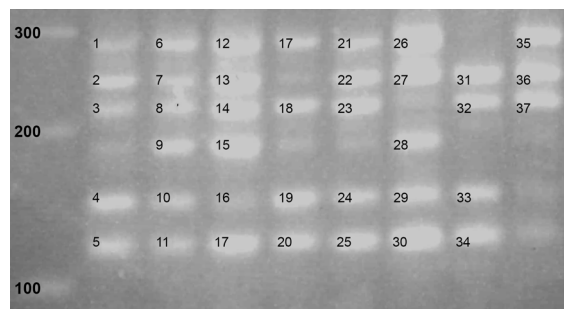


**Sex differences in population dynamics during formation of kidney bacterial communities by uropathogenic *Escherichia coli***

Lisa K. McLellan, Allyssa L. Daugherty, and David A. Hunstad



**Supplementary Figure 1. Sample multiplex PCR gel image.** The combined inoculum of 40 isolates used in mouse experiments was subjected to DNA extraction, amplification, and electrophoresis. Indicated numerically are the 37 bands consistently observed and therefore used for analysis. Left, molecular weight markers (labeled in bp).