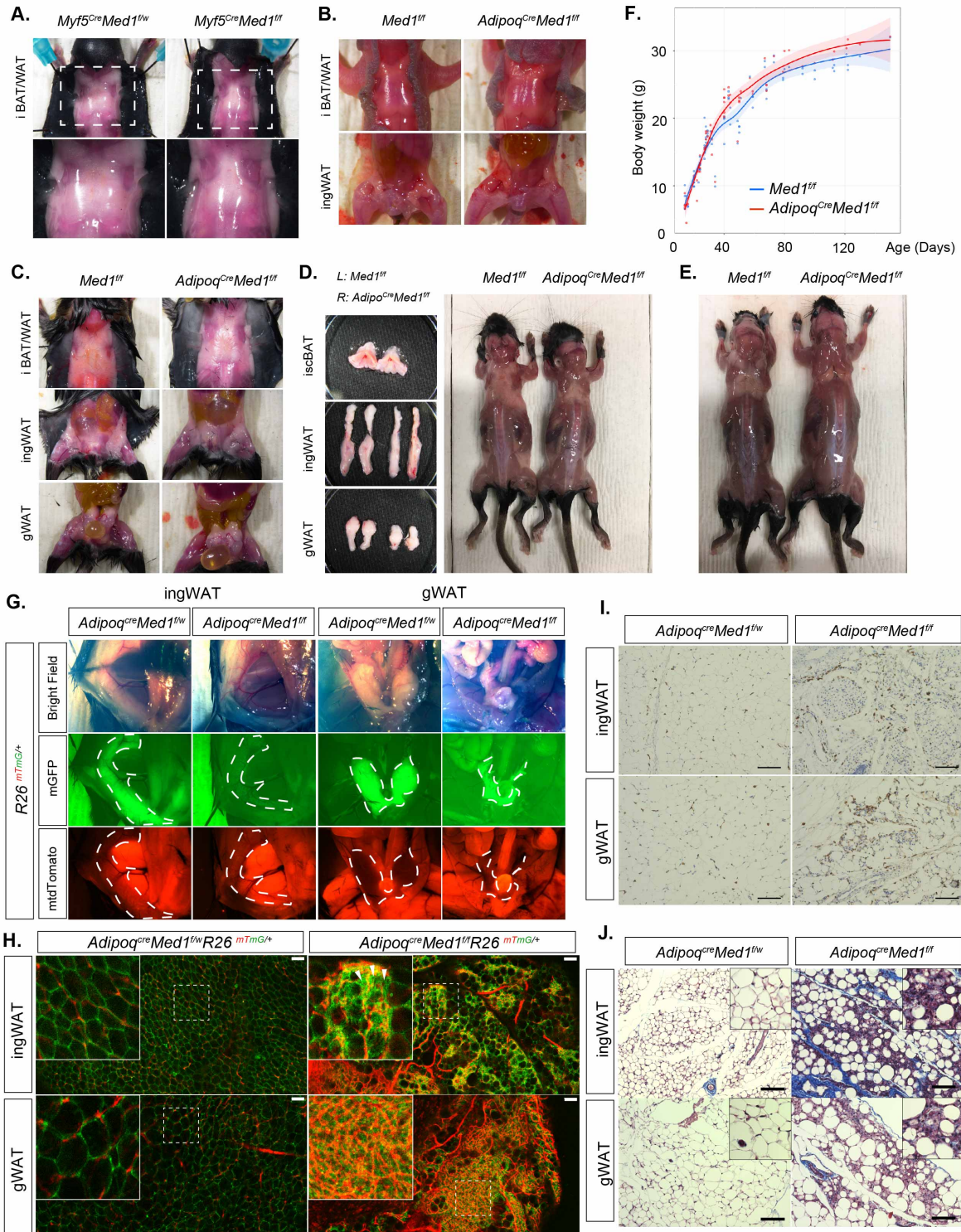


Supplemental\_Fig\_S6



**Figure S6. Examination of WAT tissues in *Myf5<sup>Cre</sup> Med1<sup>ff</sup>* and *Adipo<sup>Cre</sup> Med1<sup>ff</sup>* mice**

**A)** Macroscopic images of *Myf5<sup>Cre</sup>Med1<sup>f/w</sup>* and *Myf5<sup>Cre</sup>Med1<sup>ff</sup>* mice at P10. Note a reduction in WAT of *Myf5<sup>Cre</sup>Med1<sup>ff</sup>* mice. **B-E).** Macroscopic images of different WATs of *Control* and *Adipo<sup>Cre</sup>Med1<sup>ff</sup>* at B) P4, C) P15, D) 4 weeks, and E) 6 weeks of age. **F)** Body weight changes of *Med1<sup>ff</sup>* and *Adipo<sup>Cre</sup>Med1<sup>ff</sup>* male mice (Mean, Confidence interval 0.95). **G)** Macroscopic fluorescent image of adipose tissues from 10-week old *Adipoq<sup>Cre</sup>Med1<sup>f/w</sup>* and *Adipoq<sup>Cre</sup>Med1<sup>ff</sup>* female mice harboring a *Rosa-mTmG* allele. Efficient and specific labeling of adipose tissues with mGFP is confirmed. **H)** Whole mount fluorescence confocal images of female ingWAT and gWAT from *Adipoq<sup>Cre</sup>Med1<sup>f/w</sup>* and *Adipoq<sup>Cre</sup>Med1<sup>ff</sup>* mice harboring a *Rosa-mTmG* allele. Magnified images of areas surrounded by dotted squares are shown in the upper left corner. White arrowheads indicate examples of clustered mGFP-labeled non-lipid containing cells. White bars indicate 100  $\mu$ m. **I)** Immunohistochemical analysis of CD11b of male ingWAT and gWAT from *Adipoq<sup>Cre</sup>Med1<sup>f/w</sup>* and *Adipoq<sup>Cre</sup>Med1<sup>ff</sup>* mice. Bars indicate 100  $\mu$ m. **J)** Masson's Trichrome staining of male ingWAT and gWAT of *Adipoq<sup>Cre</sup>Med1<sup>f/w</sup>* and *Adipoq<sup>Cre</sup>Med1<sup>ff</sup>* mice. Magnified images of the parenchyma are displayed on the upper right corner of each image. Bars indicate 100  $\mu$ m.