

Supplemental_Fig_S7

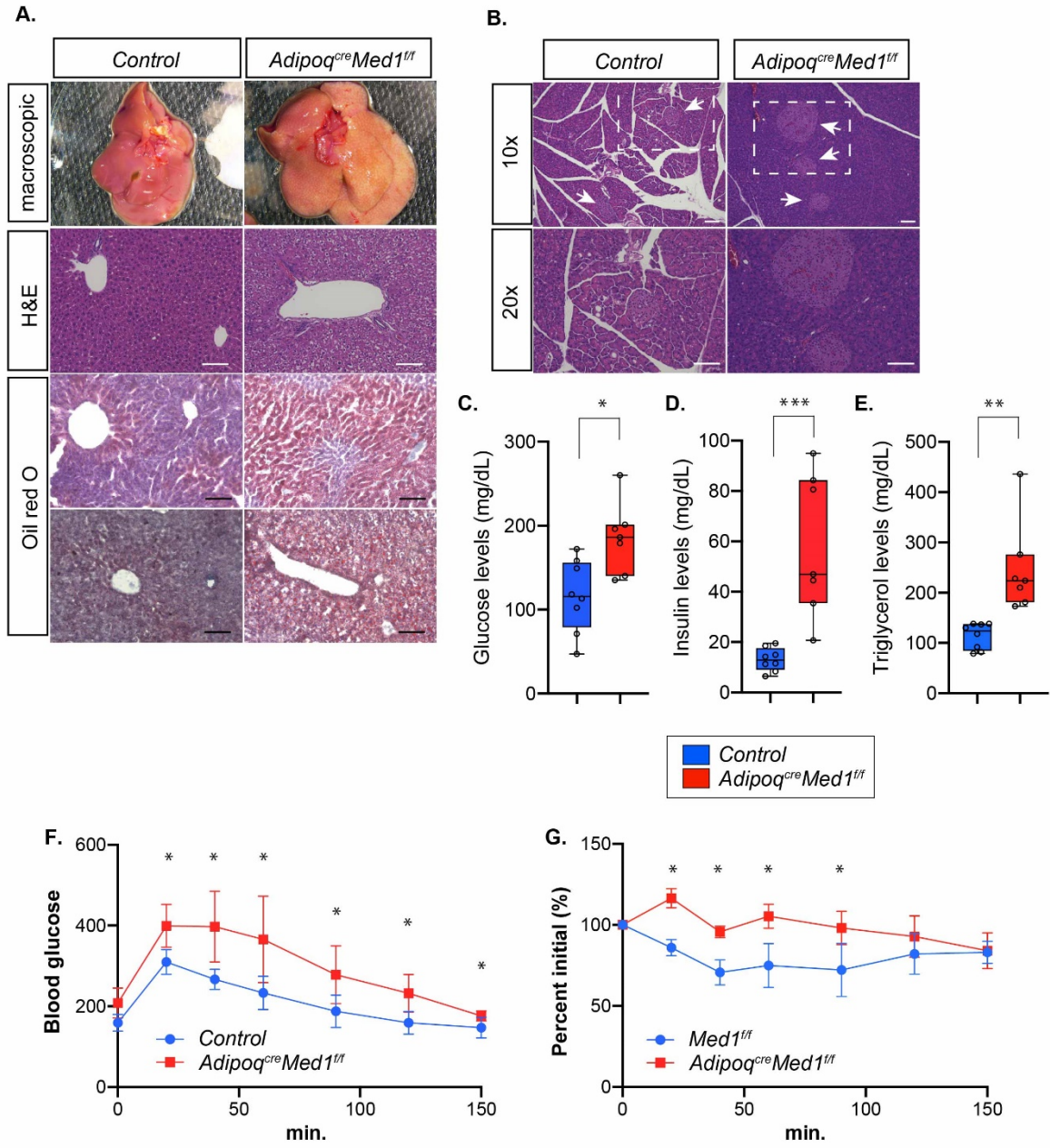


Figure S7: Metabolic characterization of *Adipoq^{Cre}Med1^{ff}* mice

A) Macroscopic images of livers dissected from 3-month old *Med1^{f/w}* and *Adipoq^{Cre}Med1^{ff}* mice (upper panels). H&E examination of paraffin sections of the liver (middle panels), and oil-red-O staining of cryo-sections of two independent livers with different degrees of steatosis (lower panels). White bars indicate 100 μ m. **B)** H&E staining of pancreases from 3 months old *Med1^{f/w}* and *Adipoq^{Cre}Med1^{ff}* mice. White arrows indicate the islets. White bars indicate 100 μ m. **C-E)** Non-fasted serum levels of C) glucose, D) insulin, and E) triglyceride levels from 2-3 month old *Med1^{f/w}* (n=8) and *Adipoq^{Cre}Med1^{ff}* (n=7) male mice. **F)** Glucose tolerance test at 3-4 months old mice. *Control* (*Adipoq^{Cre}Med1^{f/w}* and *Med1^{ff}*, n=9) and *Adipoq^{Cre}Med1^{ff}* (n=8) mice. **G)** Insulin tolerance test in 2-3 months old male *Med1^{ff}* (n=4) and *Adipoq^{Cre}Med1^{ff}* (n=4) mice (C to G, mean, \pm SD, *p<0.05 (T-test)).