

Figure S5A. Spearman correlogram of CD4+ count, CD4/CD8 ratio, virological and immunological biomarkers at 24 weeks of ART. Heat map is used to indicate the strengths of associations between biomarkers. Red indicates a negative correlation, blue a positive correlation.

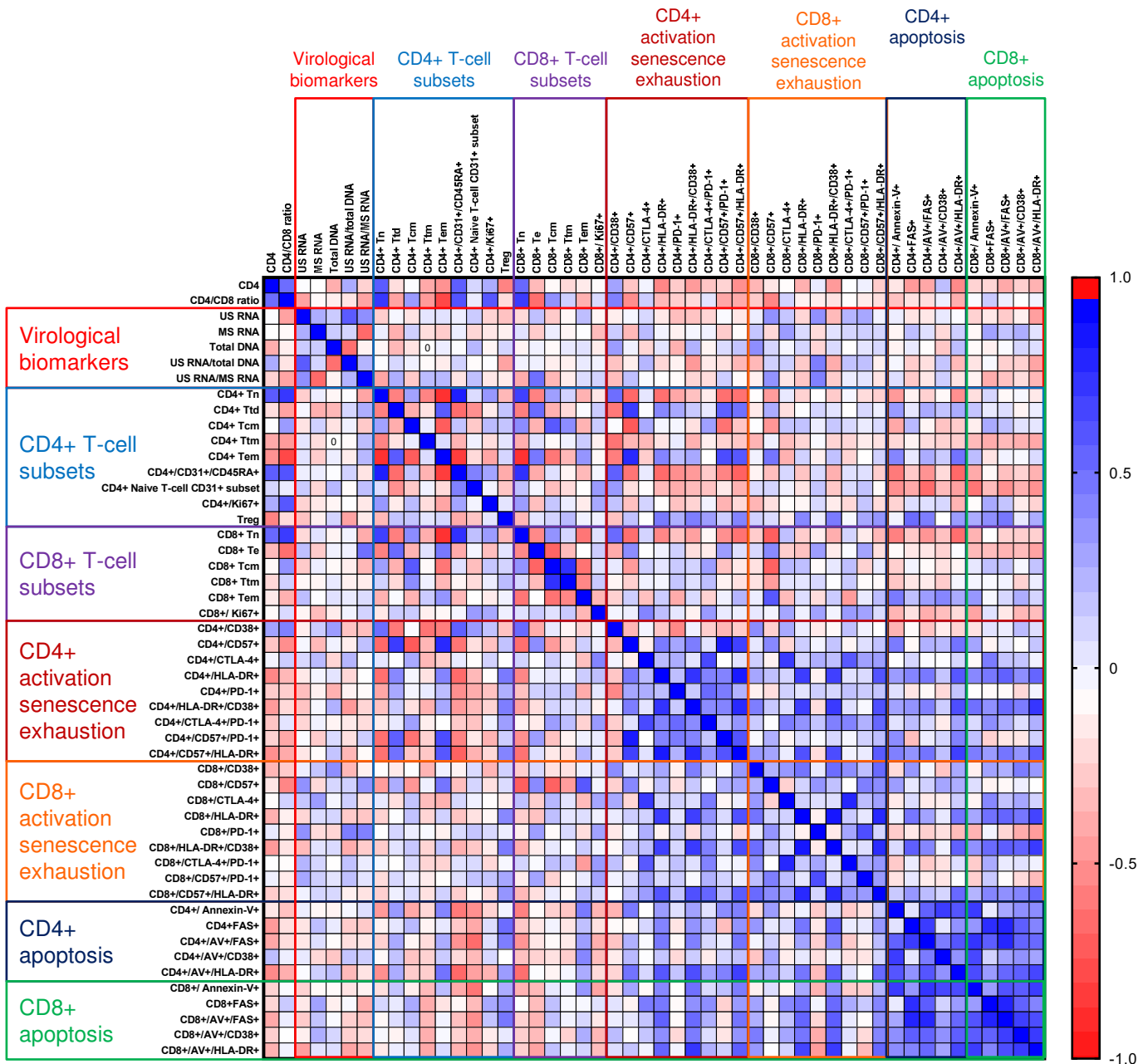


Figure S5B. Spearman correlogram of CD4+ count, CD4/CD8 ratio, virological and immunological biomarkers at 48 weeks of ART. Heat map is used to indicate the strengths of associations between biomarkers. Red indicates a negative correlation, blue a positive correlation.

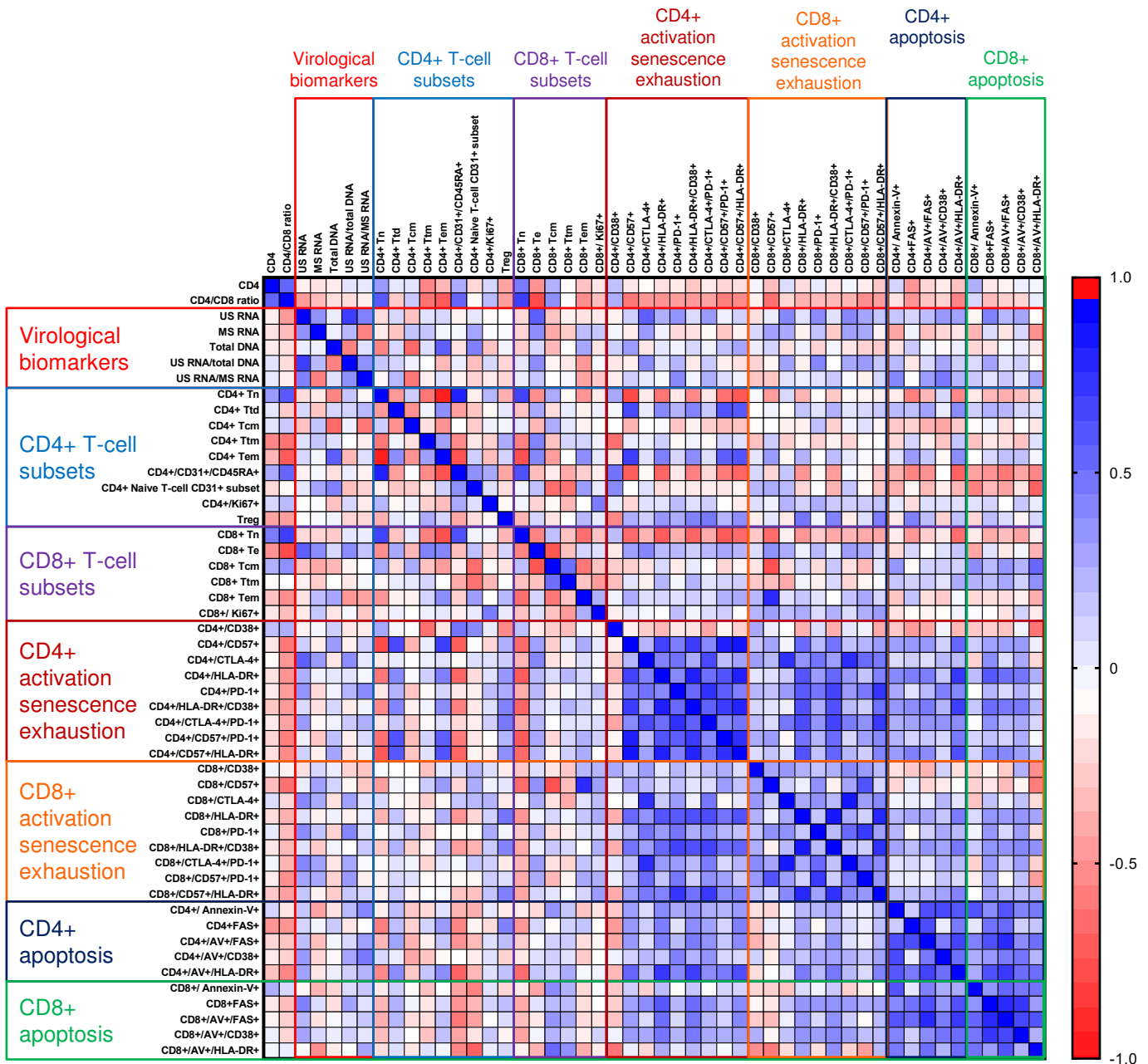


Figure S5C. Spearman correlogram of CD4+ count, CD4/CD8 ratio, virological and immunological biomarkers at 96 weeks of ART. Heat map is used to indicate the strengths of associations between biomarkers. Red indicates a negative correlation, blue a positive correlation.