

**A**

```

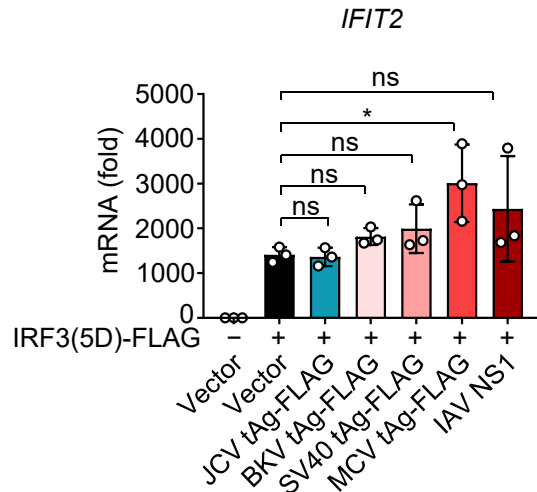
MCV      mdlvlnrkerealcklleispncygniplmkaafkrscldkhhpdkggnpvimmelntlws 60
SV40     mdkvlnreeslqlmdllglersawgniplmrkaylkkckefhpdkggdeekmkkmntlyk 60
JCV      mdkvlnreesmelmdllglersawgnipvmrkaylkkckelhpdkggdedkmkrmflyk 60
BKV      mdkvlnreesmelmdllgleraawgniplmrkaylrkckefhpdkggdedkmkrmntlyk 60
          ** ***** * .** :. .:***:***: * : .* : *****: * .* *:.

MCV      kfqgnihklr-sdfsmfdevstkfwpweeygtlkdymsqsgynarfcrp-gpcmlkqlrds 118
SV40     kmedgvkyahqpdfggf-----wdatevfasslnpgvdamyckqwpacak--kmsan 110
JCV      kmeqgvkvahqpdfgt-----wnssev-scdfppnsdtlyckewpncat--npsvh 108
BKV      kmeqdvkvahqpdfgt-----wssev-cadfpplcpdtlyckdwpicsk--kpsvh 108
          *:::~::~ : ** . * . : : : * : * * . :

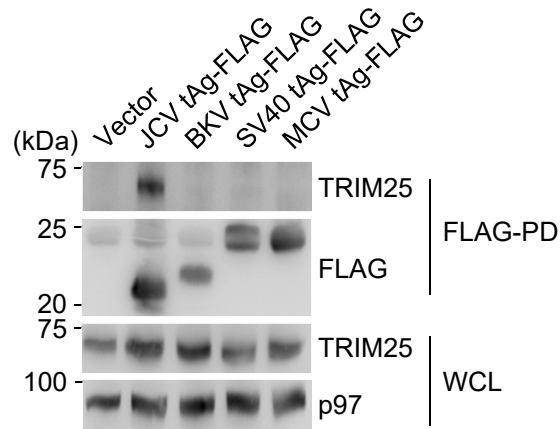
MCV      caciscslsrqhcslktlkqkncltwgcefcyqcfilwfgfpptwesfdwqktleedy 178
SV40     cicllcllrnkhenrk-lyrkdlplvwddcycfdcfmwfgldlcegtlllwcddiigq 169
JCV      cpclmcmklrhrnrk-flrsslplwidcycfdcfmwfgcdltqeahcwekviqdt 167
BKV      cpcmlcqlrlrhlrnrk-flrkeplvwidcycidcftqwfglldteetlqwwvqi 167
          * * : * * : * . * : :.. * . * : * : * : * * * * * : : * . : : * :

MCV      cllhlhlf 186
SV40     rdlkl--- 174
JCV      rdlkl--- 172
BKV      rdlkl--- 172
          *:*
  
```

**B**



**C**



**FIGURE S5**