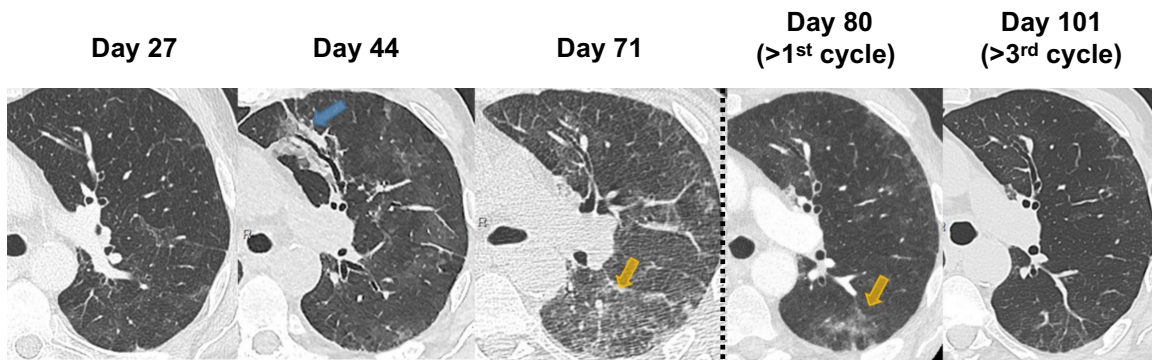


Supplemental Figure 1, Zimmerli et al.

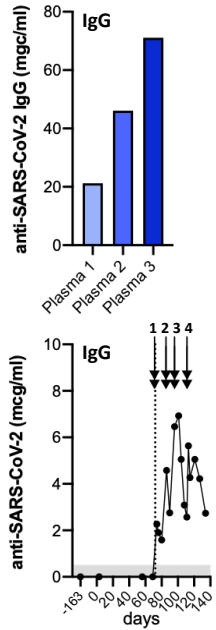


Supplemental Figure 2, Zimmerli et al.

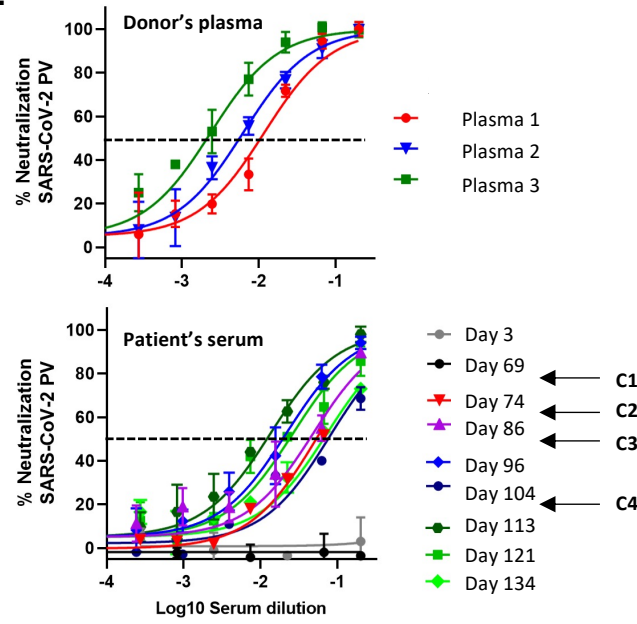
A.

Date	Day	Cycles of plasma transfusion			EUROimmun/ELISA		Total IgG within plasma	
		Cycles	Transfused unit	Volume	anti-S1 IgG S/CO	anti-S1 IgA S/CO	g/l	g/unit of transfusion
11.06	72	Cycle 1	Donor 1 - unit 1	1x200 ml	4.43	1.62	10.3	2.06
12.06	73	Cycle 1	Donor 1 - unit 2	1x200 ml				2.06
23.06	84	Cycle 2	Donor 1 - unit 3	1x200 ml				2.06
24.06	85	Cycle 2	Donor 2 - unit 1	1x200 ml	5.29	2.95	8.23	1.65
3.07	94	Cycle 3	Donor 2 - unit 2	1x200 ml				1.65
4.07	95	Cycle 3	Donor 2 - unit 3	1x200 ml				1.65
20.07	111	Cycle 4	Donor 3 - unit 1	1x200 ml	7.67	n.a.	6.6	1.32
21.07	112	Cycle 4	Donor 3 - unit 2	1x200 ml				1.32

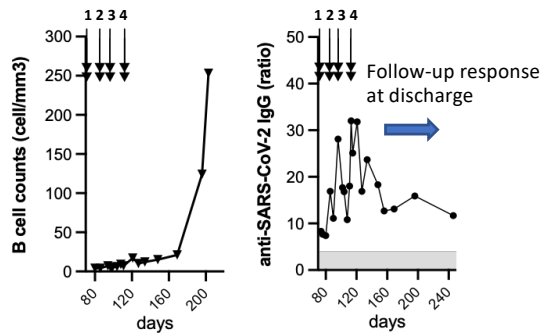
B.

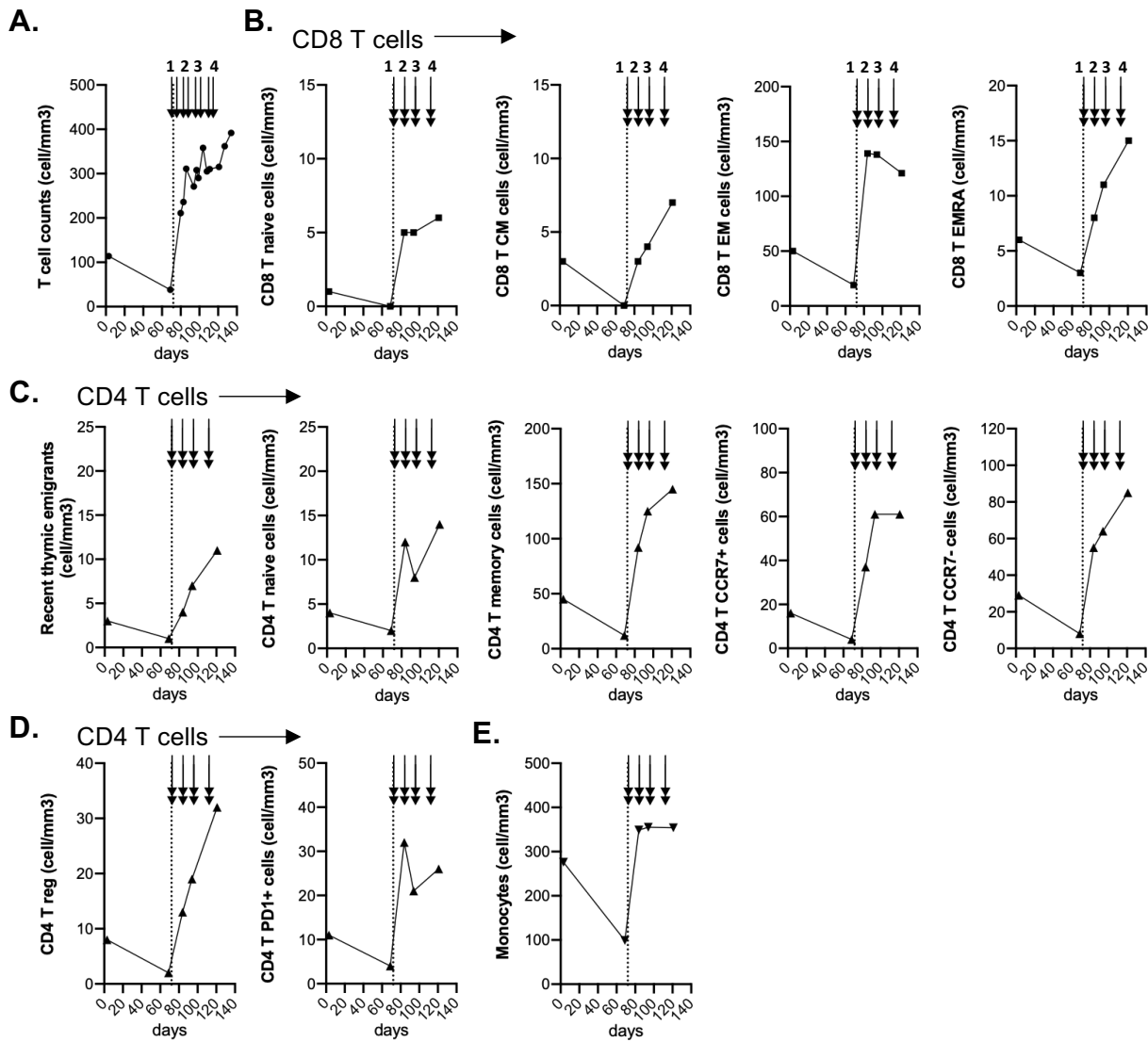


C.



D.





F.

Day 121 30.07.2020	Naive B cells	Unswitched memory B cells	Switched memory B cells	Late memory B cells
cell/mm ³	CD27-IgD+ 2	CD27+IgD+ 14	CD27+IgD- 1	CD27-IgD- 0
%	12.7	80.5	4.8	0

Day 203 20.10.2020	Naive B cells	Unswitched memory B cells	Switched memory B cells	Late memory B cells
cell/mm ³	CD27-IgD+ 157	CD27+IgD+ 3	CD27+IgD- 1	CD27-IgD- 49
%	61.8	1.3	17.6	19.3