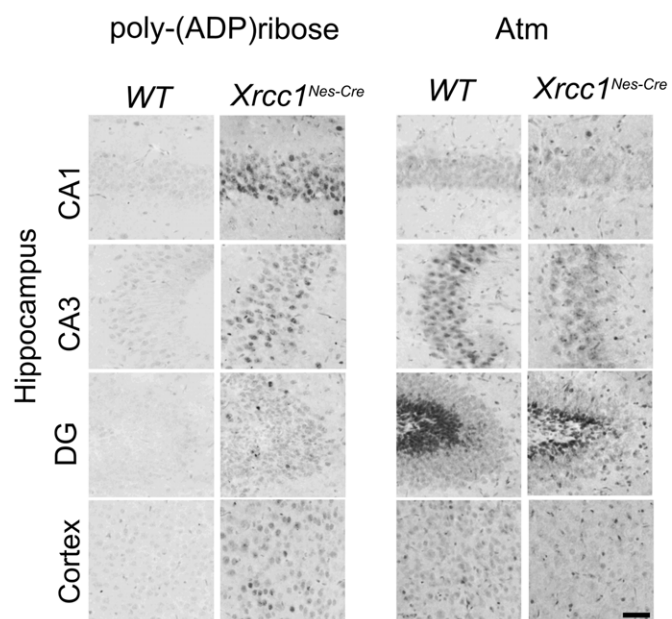


## Expanded View Figures



**Figure EV1. Levels of poly(ADP-ribose) and Atm in Wild-type and *Xrcc1<sup>Nes-cre</sup>* brain.**

Sagittal sections obtained from mice (p15) of the indicated genotypes were immunostained using anti-poly(ADP-ribose) antibody (Trevigen; 4336) or for Atm protein using the antibody EPR17059 (Abcam; ab199726). Representative images of the hippocampal regions CA1, CA3 and dentate gyrus (DG), and in the cerebral cortex, are shown as indicated. Scale bar 50  $\mu$ m.