

# **Abnormal liver tests in patients with SARS-CoV-2 or influenza – prognostic similarities and temporal disparities**

Noa Shafran, Assaf Issachar, Tzippy Shochat, Inbal Haya Shafran, Michael  
Bursztyn, Amir Shlomai

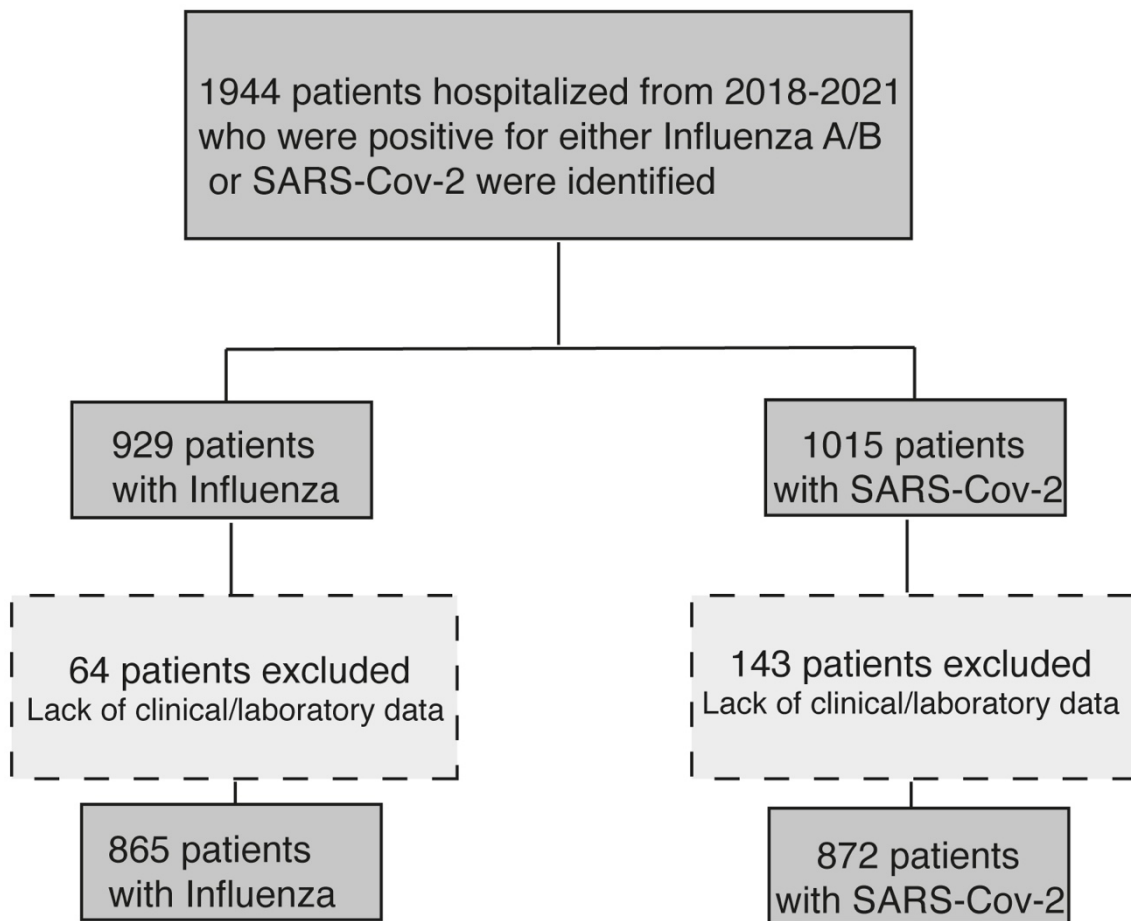
## Table of contents

Table S1.....	2
Fig. S1.....	4
Fig. S2.....	5
Fig. S3.....	6
Fig. S4.....	7

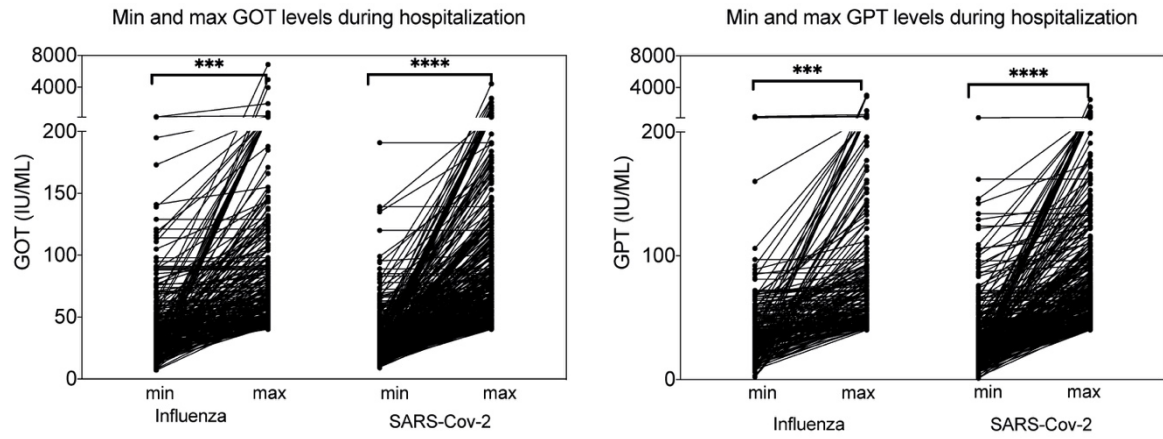
**Table S1. Univariate analysis of various parameters with a composite outcome of death or mechanical ventilation during hospitalization.**

	Influenza				SARS-Cov-2			
	OR	Lower 95% C.L	Upper 95% C.L	p value	OR	Lower 95% C.L	Upper 95% C.L	p value
Age	1.04	1.02	1.057	<0.0001	1.037	1.025	1.048	<0.0001
Gender	1.148	0.712	1.851	0.570	1.567	1.115	2.201	0.010
BMI	0.965	0.92	1.012	0.139	0.991	0.965	1.019	0.535
CV disease	1.526	0.945	2.464	0.084	2.225	1.579	3.135	<0.0001
Liver Disease	1.27	0.43	3.68	0.658	1.32	0.516	3.375	0.563
GGT $\geq$ 40	5.14	2.96	8.92	<0.0001	4.92	3.26	7.42	<0.0001
GOT $\geq$ 40	6.02	3.57	10.14	<0.0001	8.877	5.932	13.284	<0.0001
GPT $\geq$ 40	3.76	2.314	6.126	<0.0001	3.569	2.535	5.023	<0.0001
Bilirubin <sub>max</sub>	1.485	1.213	1.819	<0.0001	1.886	1.562	2.277	<0.0001
Albumin <sub>min</sub>	0.184	0.127	0.267	<0.0001	0.085	0.085	0.123	<0.0001
CRP <sub>max</sub>	1.079	1.058	1.10	<0.0001	1.126	1.106	1.146	<0.0001
Lymph <sub>min</sub>	0.12	0.05	0.29	<0.0001	0.935	0.802	1.089	0.387
PT/INR <sub>max</sub>	1.485	1.102	2.003	0.009	4.295	2.596	7.107	<0.0001
Systolic BP <sub>min</sub>	0.947	0.934	0.960	<0.0001	0.953	0.943	0.963	<0.0001
Blood oxygen Saturation <sub>min</sub>	0.885	0.854	0.917	<0.0001	0.862	0.840	0.884	<0.0001
Anti-viral treatment	1.16	0.609	2.208	0.65	2.359	1.628	3.418	<0.0001
Antibiotics	6.108	2.617	14.253	<0.0001	5.636	3.767	8.434	<0.0001
Length of hospitalization	1.061	1.038	1.085	<0.0001	1.103	1.082	1.125	<0.0001

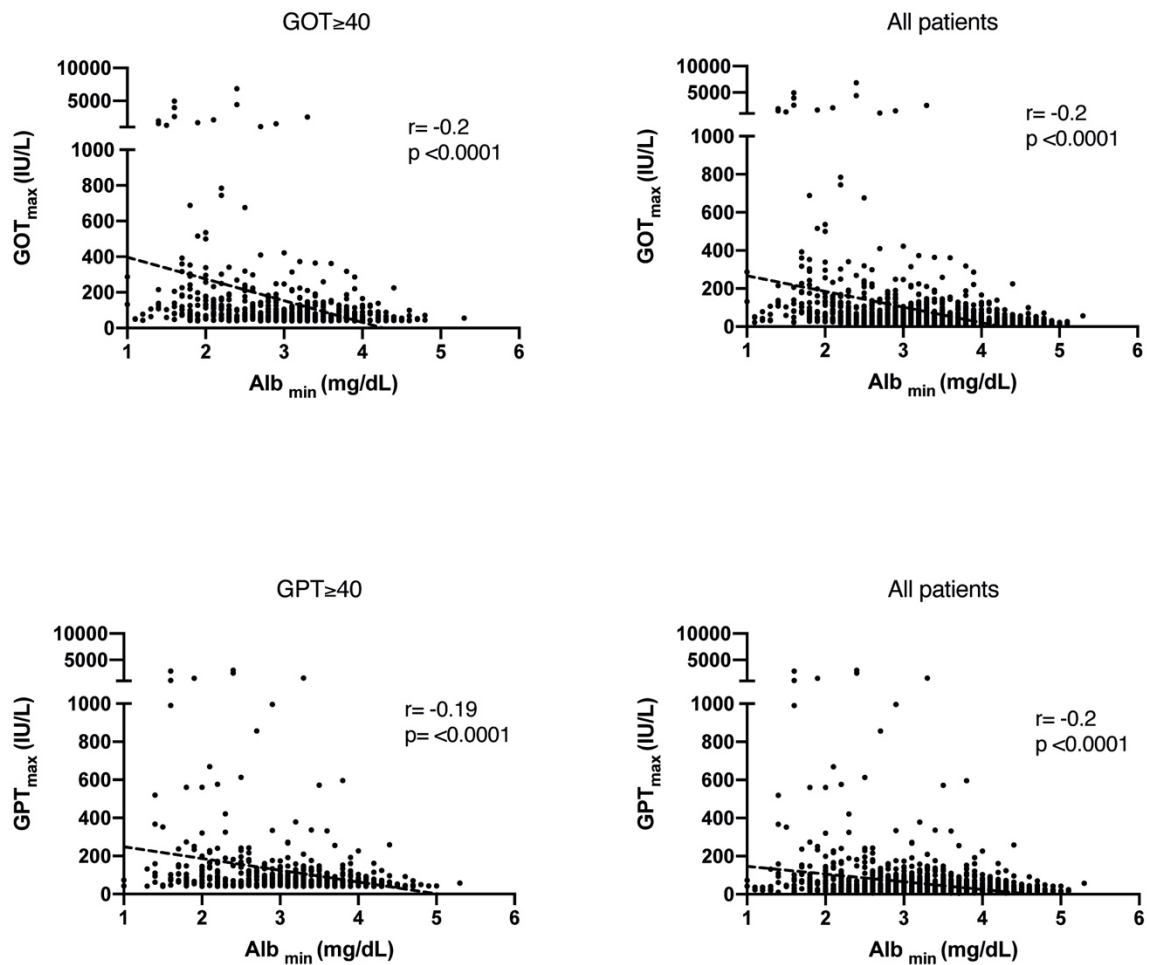
In Hospital pneumonia	3.775	2.283	6.242	<0.0001	2.225	1.079	4.588	0.030
ICU	8.988	3.652	22.12	<0.0001	13.865	7.184	26.760	<0.0001
Enoxaparin					4.20	2.83	6.24	<0.0001
Remdesivir					3.69	2.41	5.63	<0.0001
Dexamethasone					7.46	5.14	10.82	<0.0001



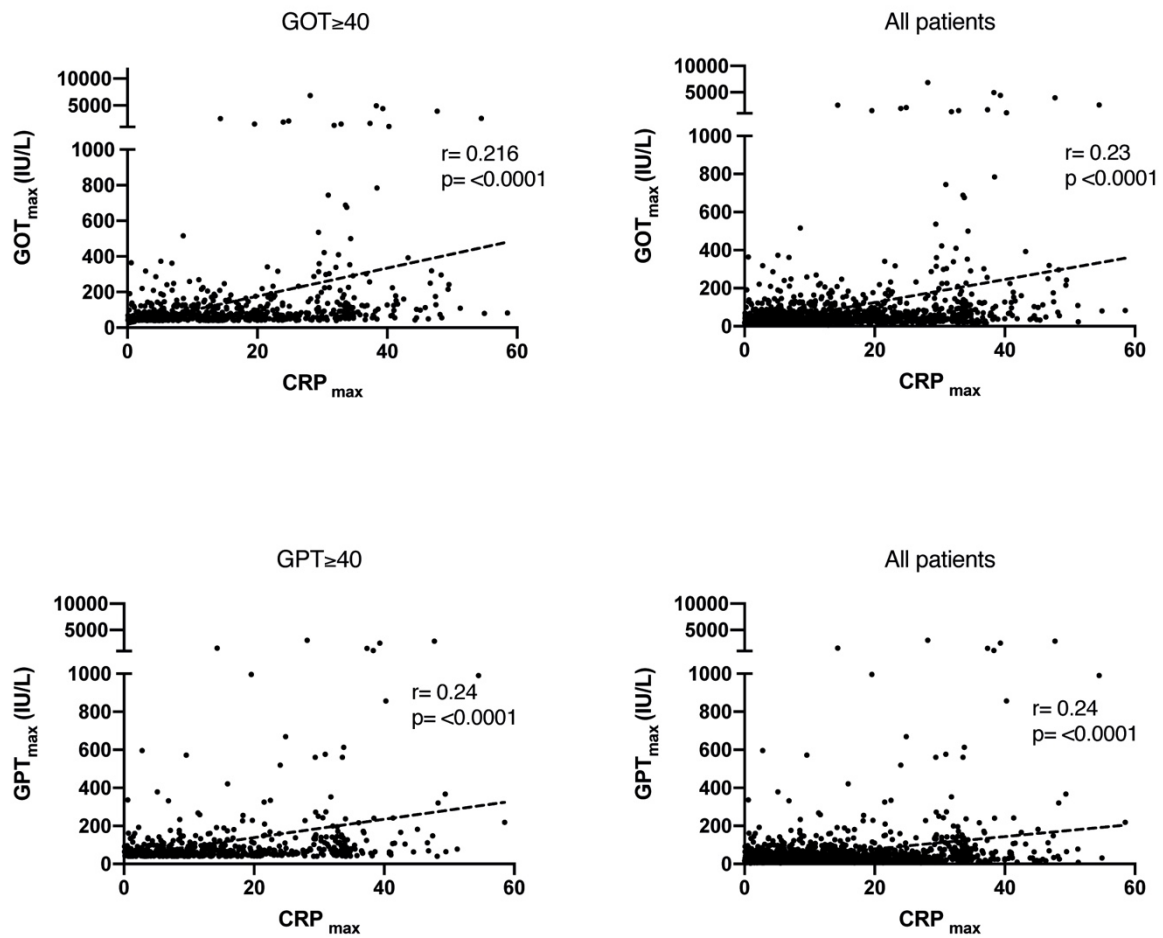
**Fig S1.** Study flow-chart



**Fig S2.** Comparison of minimal and maximal levels of liver tests during hospitalization among patients with abnormal liver tests according to the type of infection. Statistical differences were calculated using unpaired t test (asterisk indicate statistical significance).



**Fig S3. Correlation curves between serum albumin<sub>min</sub> and peak liver tests levels during hospitalization.** A pearson's correlation analysis of the maximal level of each liver test (GPT or GOT) and minimal albumin level during hospitalization are displayed, with the corresponding pearson's correlation coefficient (r) values and their p values. Left panels display the results only for patients with abnormal liver tests and right panels display the results for all hospitalized patients (regardless of the type of infection).



**Fig S4. Correlation curves between serum  $CRP_{max}$  and peak liver tests levels during hospitalization.** A Pearson's correlation analysis of the maximal level of each liver test (GPT or GOT) and maximal CRP level during hospitalization are displayed with the corresponding Pearson's correlation coefficient ( $r$ ) values and their  $p$  values. Left panels display the results only for patients with abnormal liver tests and right panels display the results for all hospitalized patients (regardless of the type of infection).