

Supplemental Online Content

de Boniface J, Szulkin R, Johansson ALV. Survival after breast conservation vs mastectomy adjusted for comorbidity and socioeconomic status: a Swedish national 6-year follow-up of 48 986 women. *JAMA Surg*. Published online May 5, 2021. doi:10.1001/jamasurg.2021.1438

eTable 1. ICD-10 codes based on the Royal College of Surgeons' adaptation of the Charlson Comorbidity Index

eTable 2. Hazard ratios of OS and BCSS for locoregional treatment and prognostic group by short (0-5 years) and long (>5 years) follow-up

eFigure 1. CONSORT diagram for all primary breast cancer cases diagnosed in Sweden 2008-2017

eFigure 2. Survival proportions for breast cancer-specific survival by locoregional treatment group and age

eFigure 3. Survival proportions for overall survival by locoregional treatment group and prognostic group

eFigure 4. Survival proportions for overall survival by locoregional treatment group and age

This supplemental material has been provided by the authors to give readers additional information about their work.

eTable 1. ICD-10 codes based on the Royal College of Surgeons' adaptation of the Charlson Comorbidity Index

Disease category	Weight	ICD-10
Diabetes mellitus	1	E10, E11, E12, E13, E14
Dementia	1	F00, F01, F02, F03, G30, G31, A81, F05
Cerebrovascular Disease	1	G45, G46, I60, I61, I62, I63, I64, I65, I66, I67, I68, I69
Congestive Heart Failure	1	I11, I42, I43, I50, I51
Congestive Heart Failure or Renal Disease *	1	I13
Myocardial Infarction	1	I21, I22, I23
Congestive Heart Failure or Myocardial Infarction *	1	I25
Chronic Pulmonary Disease	1	I26, I27, J40, J41, J42, J43, J44, J45, J46, J47, J60, J61, J62, J63, J64, J65, J66, J67, J68, J70
Peripheral Vascular Disease	1	I70, I71, I72, I73, I77, K55, Z95
Rheumatological Disease	1	M05, M06, M09, M32, M33, M34, M35, M36, M12, M31
Any malignancy	2	C00, C01, C02, C03, C04, C05, C06, C07, C08, C09, C10, C11, C12, C13, C14, C15, C16, C17, C18, C19, C20, C21, C22, C23, C24, C25, C26, C30, C31, C32, C33, C34, C37, C38, C39, C40, C41, C43, C45, C46, C47, C48, C49, C50, C51, C52, C53, C54, C55, C56, C57, C58, C60, C61, C62, C63, C64, C65, C66, C67, C68, C69, C70, C71, C72, C73, C74, C75, C76, C80, C81, C82, C83, C84, C85, C88, C90, C91, C92, C93, C94, C95, C96, C97
Hemiplegia or paraplegia	2	G81, G82, G83, G11
Renal Disease	2	I12, N01, N03, N05, N07, N08, N18, N19, N25, Z49, N17, Z99
Renal Disease or Liver Disease *	2	Z94
Liver Disease	3	B18, I85, K70, K71, K76, I86, I98, K72
AIDS/HIV	6	B20, B21, B22, B24
Metastatic solid tumor	6	C77, C78, C79

* Due to ICD-10 being included as 3-digit codes in the patient register, it was not possible to separate these diseases.

eTable 2. Hazard ratios of OS and BCSS for locoregional treatment and prognostic group by short (0-5 years) and long (>5 years) follow-up.

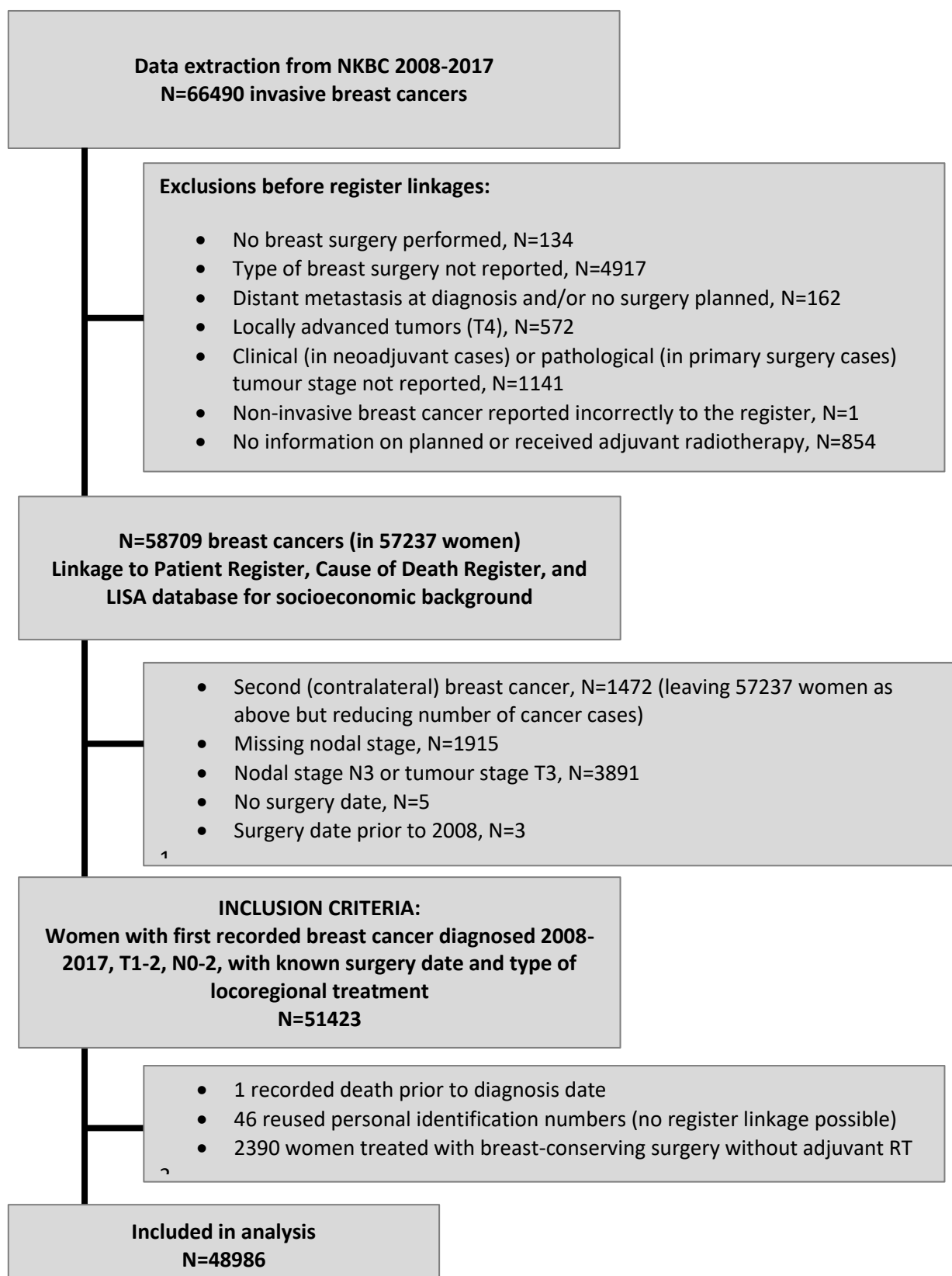
	OS		OS		BCSS		BCSS	
	0-5 year		>5 year		0-5 year		>5 year	
	HR (95% CI) ^a	p-value	HR (95% CI) ^a	p-value	HR (95% CI) ^a	p-value	HR (95% CI) ^a	p-value
All prognostic groups								
BCS+RT	1.00 (reference)		1.00 (reference)		1.00 (reference)		1.00 (reference)	
Mx-RT	1.83 (1.67-2.00)	<0.001	1.72 (1.55-1.92)	<0.001	1.78 (1.52-2.09)	<0.001	1.45 (1.15-1.82)	0.001
Mx+RT	1.25 (1.11-1.41)	<0.001	1.24 (1.07-1.43)	0.004	1.34 (1.13-1.60)	<0.001	1.17 (0.91-1.49)	0.224
Prognostic group:								
T1N0								
BCS+RT	1.00 (reference)		1.00 (reference)		1.00 (reference)		1.00 (reference)	
Mx-RT	1.53 (1.33-1.76)	<0.001	1.59 (1.36-1.87)	<0.001	1.55 (1.12-2.13)	0.008	1.88 (1.30-2.73)	<0.001
Mx+RT	1.37 (0.93-2.02)	0.117	1.38 (0.89-2.13)	0.146	1.54 (0.77-3.07)	0.224	2.19 (1.04-4.60)	0.039
T1N1								
BCS+RT	1.00 (reference)		1.00 (reference)		1.00 (reference)		1.00 (reference)	
Mx-RT	2.00 (1.51-2.65)	<0.001	2.04 (1.46-2.86)	<0.001	1.21 (0.68-2.17)	0.514	0.58 (0.22-1.57)	0.287
Mx+RT	1.31 (0.97-1.78)	0.078	1.64 (1.13-2.37)	0.009	1.73 (1.09-2.75)	0.021	1.08 (0.50-2.35)	0.842
T1N2								
BCS+RT	1.00 (reference)		1.00 (reference)		1.00 (reference)		1.00 (reference)	
Mx-RT	4.32 (2.22-8.42)	<0.001	2.51 (0.90-7.04)	0.08	5.77 (2.37-14.02)	<0.001	4.31 (1.19-15.56)	0.026
Mx+RT	1.30 (0.77-2.21)	0.327	1.32 (0.73-2.40)	0.358	1.62 (0.83-3.16)	0.157	0.90 (0.40-2.04)	0.809
T2N0								
BCS+RT	1.00 (reference)		1.00 (reference)		1.00 (reference)		1.00 (reference)	
Mx-RT	1.78 (1.47-2.16)	<0.001	1.58 (1.26-1.99)	<0.001	1.70 (1.26-2.29)	<0.001	1.55 (1.00-2.42)	0.051
Mx+RT	1.35 (0.93-1.96)	0.117	1.77 (1.21-2.60)	0.003	1.39 (0.80-2.40)	0.241	2.17 (1.11-4.24)	0.023
T2N1								

BCS+RT	1.00 (reference)		1.00 (reference)		1.00 (reference)		1.00 (reference)	
Mx-RT	2.09 (1.63- 2.69)	<0.00 1	2.04 (1.49- 2.78)	<0.00 1	1.68 (1.19- 2.38)	0.003	1.17 (0.67- 2.05)	0.573
Mx+RT	1.23 (0.95- 1.58)	0.11	1.49 (1.09- 2.05)	0.013	1.10 (0.80- 1.51)	0.566	1.59 (0.98- 2.58)	0.061
	OS		OS		BCSS		BCSS	
	0-5 year		>5 year		0-5 year		>5 year	
	HR (95% CI)^a	p- value	HR (95% CI)^a	p- value	HR (95% CI)^a	p- value	HR (95% CI)^a	p- value
T2N2								
BCS+RT	1.00 (reference)		1.00 (reference)		1.00 (reference)		1.00 (reference)	
Mx-RT	3.45 (2.21- 5.40)	<0.00 1	2.13 (1.16- 3.92)	0.015	3.12 (1.80- 5.41)	<0.00 1	0.95 (0.30- 2.97)	0.931
Mx+RT	1.75 (1.17- 2.59)	0.006	0.77 (0.49- 1.22)	0.272	1.64 (1.04- 2.59)	0.035	0.66 (0.35- 1.25)	0.203

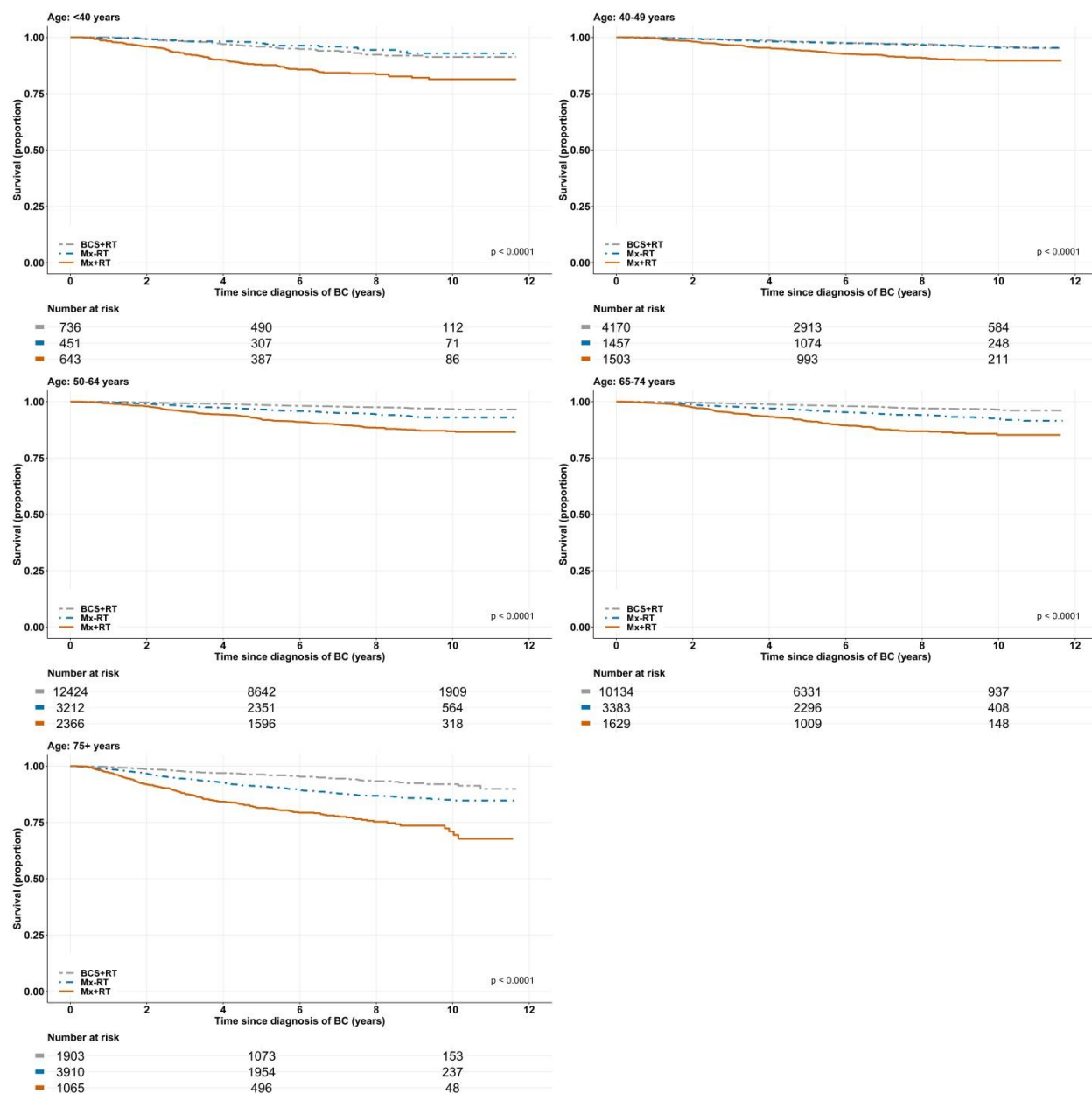
^a Adjusted for age and calendar year at diagnosis, region, country of birth, family income, highest education, Nottingham grade, subtype, and Charlson Comorbidity Index one year prior to surgery.

OS, overall survival; BCSS, breast cancer-specific survival; BCS, breast-conserving surgery; Mx, mastectomy; RT, radiotherapy

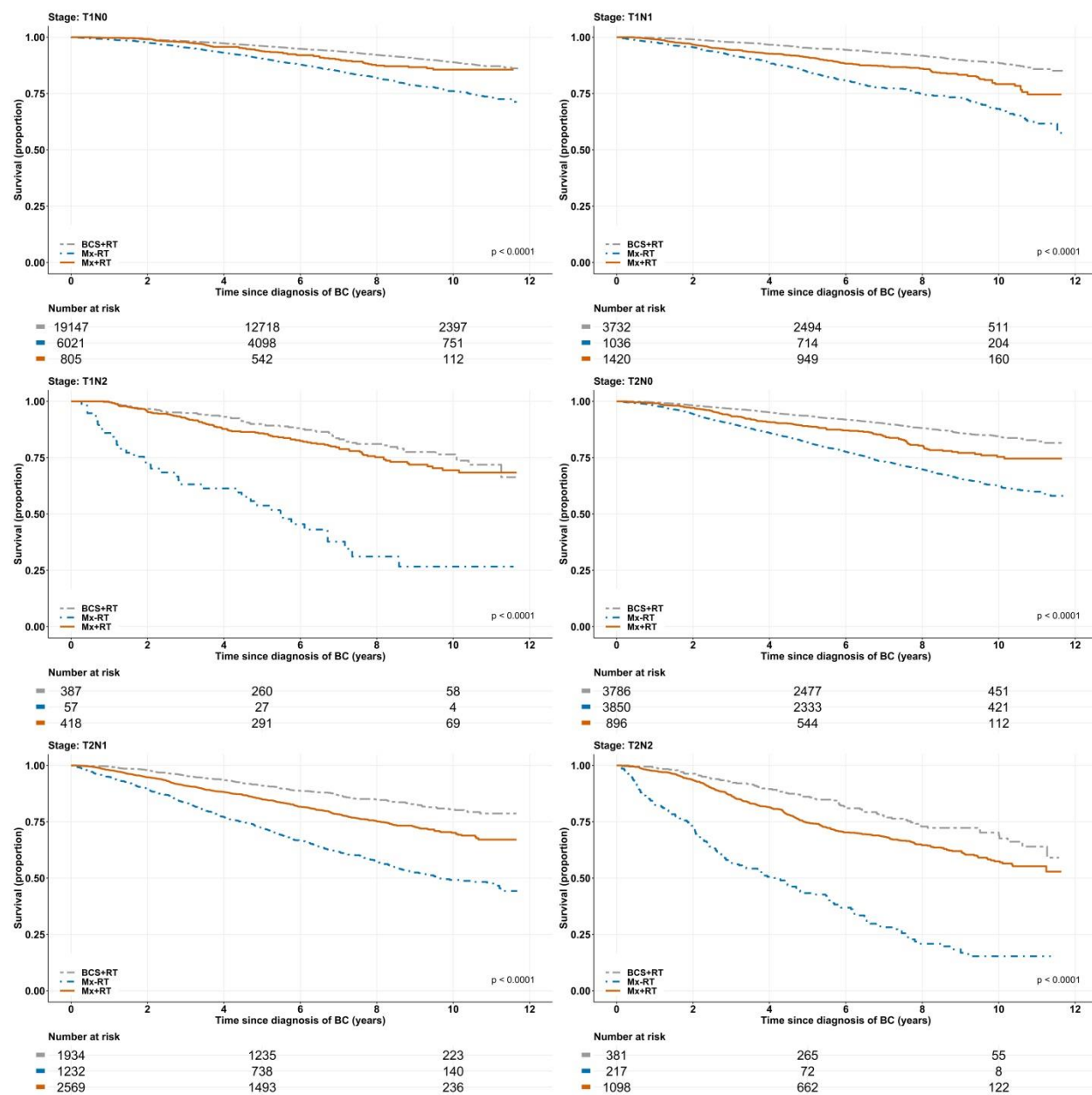
eFigure 1. CONSORT diagram for all primary breast cancer cases diagnosed in Sweden 2008-2017



eFigure 2. Survival proportions for breast cancer-specific survival by locoregional treatment group and age.



eFigure 3. Survival proportions for overall survival by locoregional treatment group and prognostic group.



eFigure 4. Survival proportions for overall survival by locoregional treatment group and age.

