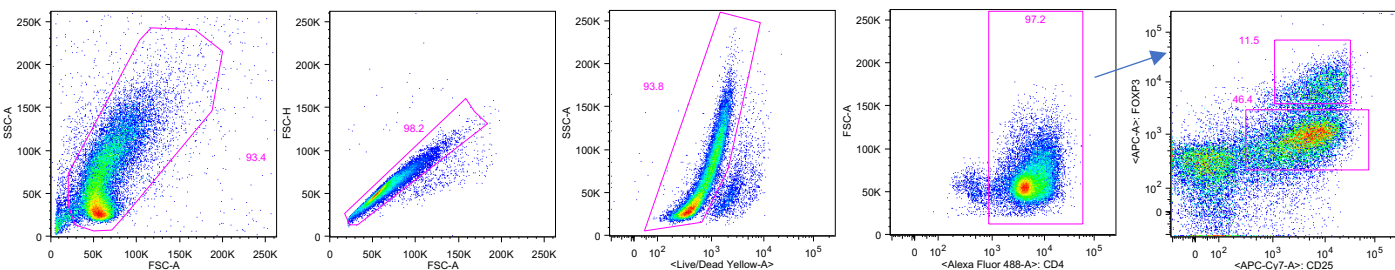
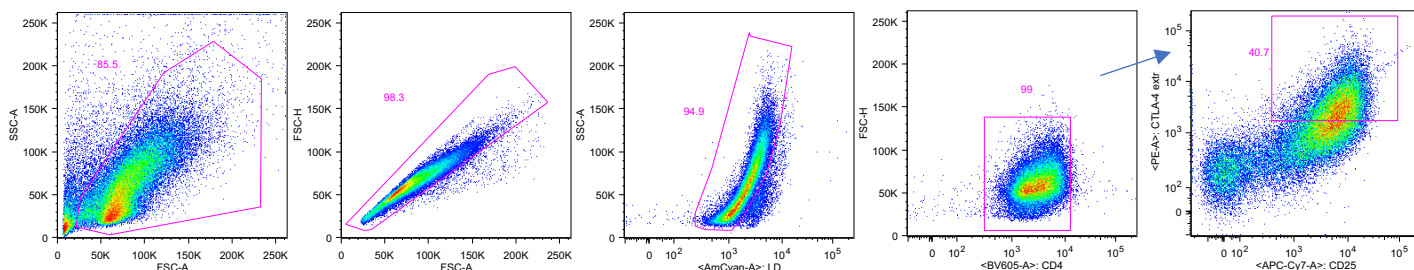


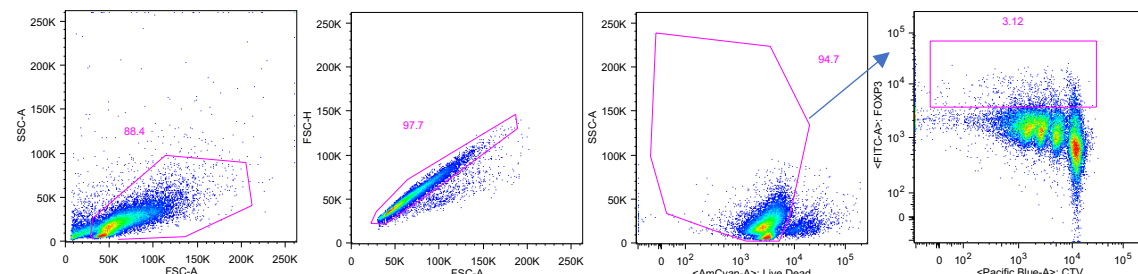
iTreg conversion gating strategy (FOXP3 vs CD25 expression) used in the following figures:  
Figure 1C, 2B, 3C, 4A, 7A and Sup Figure 1B



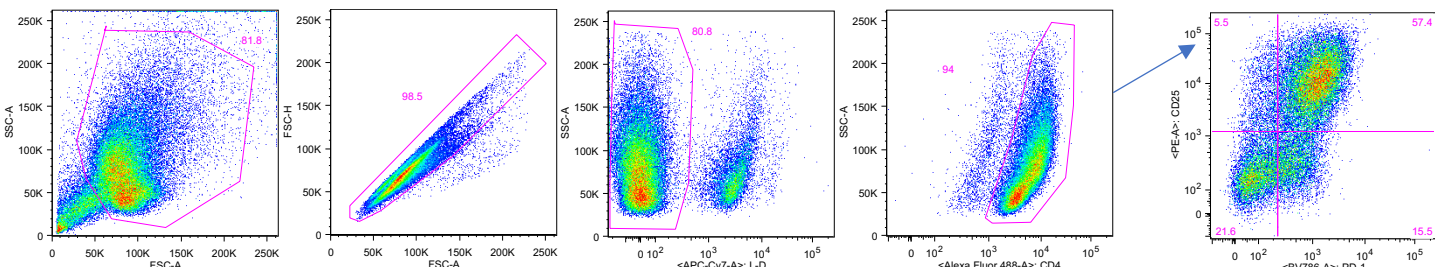
iTreg conversion gating strategy (CTLA-4 vs CD25 expression) used in the following figures:  
Sup Figure 1A and Sup Figure 1B (bottom panel)



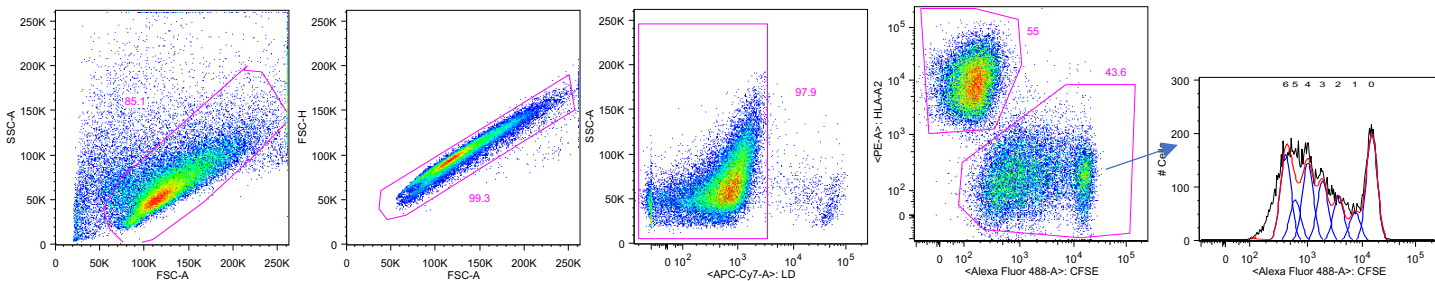
CTV gating strategy (FOXP3 vs CTV expression) used in Figure 2E



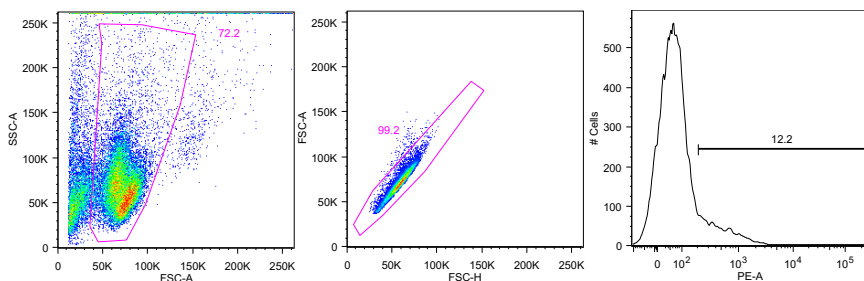
CRISPR/Cas9-*PD-1* gene editing efficiency (CD25 vs PD-1 expression) gating strategy used in  
Figure 2A



Suppression assay gating strategy used in the following figures: Figure 2F and 3D



Phospho ERK 1/2 gating strategy used in the Figure 6A



Phospho AKT, STAT3 and STAT5 gating strategy used in the following figures: Figures 5D and 6E

