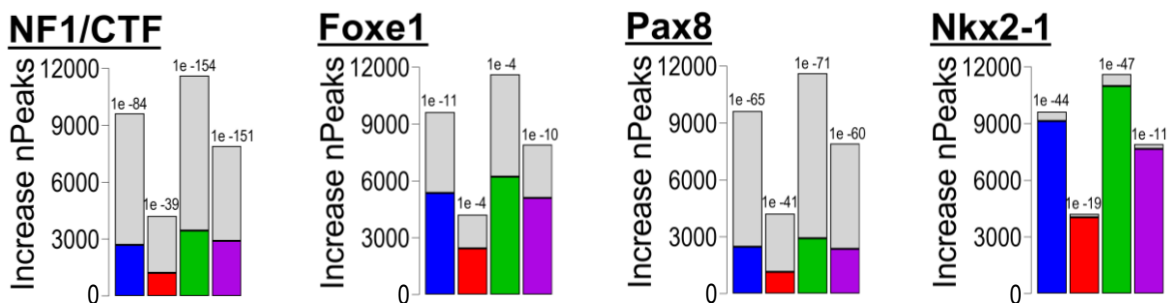
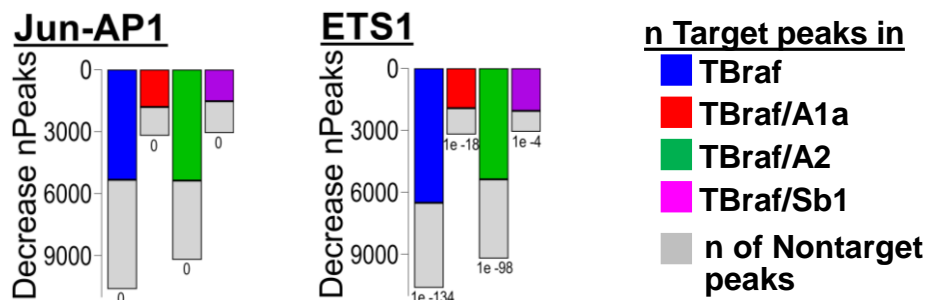
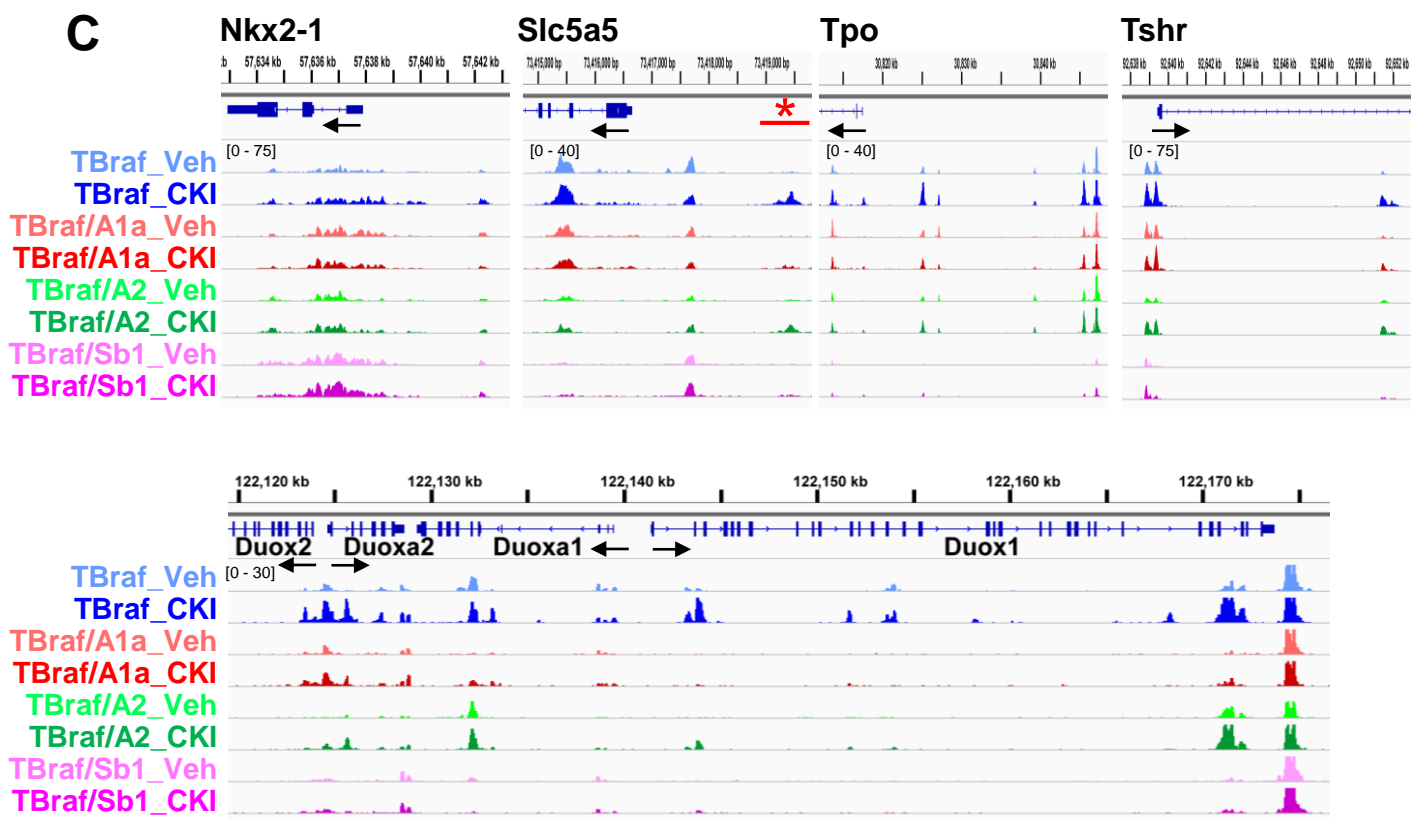


**A****B****C**

**Supplementary Figure S8: Effects of MEK inhibition on chromatin accessibility at thyroid lineage TF targets and at key MAPK downstream effectors in *TBraf* and *TBraf*/Swi-Snf deficient tumors.** (A) Increase in peaks with *NF1/CTF*, *Foxe1*, *Nkx2-1* or *Pax8* motifs post-CKI (genotype-specific colored bars); grey shaded bar shows total number of peaks increased for the indicated genotypes. P-values are as indicated. (B) Decrease in peaks with *Jun-AP1* or *ETS1* motifs post-CKI (colored bars); grey shade shows total number of peaks decreased for the indicated genotypes. (C) ATAC-seq IGV plots of the representative thyroid differentiation genes for the indicated mouse genotypes treated with or without CKI.