

Thawed cryopreserved synovial mesenchymal stem cells show comparable effects to cultured cells in the inhibition of osteoarthritis progression in rats

Kiyotaka Horiuchi¹, Nobutake Ozeki¹, Kentaro Endo¹, Mitsuru Mizuno¹, Hisako Katano¹, Masako Akiyama², Kunikazu Tsuji³, Hideyuki Koga⁴ and Ichiro Sekiya¹

¹Center for Stem Cell and Regenerative Medicine, Tokyo Medical and Dental University, 1-5-45, Bunkyo-ku, Yushima, Tokyo, Japan

²Research Administration Division, Tokyo Medical and Dental University, Tokyo, Japan.

³Department of Cartilage Regeneration, Tokyo Medical and Dental University, Tokyo, Japan.

⁴Department of Joint Surgery and Sports Medicine, Tokyo Medical and Dental University, Tokyo, Japan.

*** Correspondence information:**

Ichiro Sekiya, MD, PhD

Director and Professor, Center for Stem Cell and Regenerative Medicine

Tokyo Medical and Dental University

1-5-45 Yushima, Bunkyo-ku, Tokyo 113-8510, Japan

Phone: +81-3-5803-4017

FAX: +81-3-5803-0192

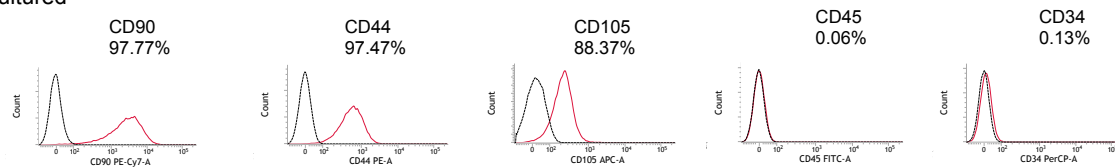
E-mail: sekiya.arm@tmd.ac.jp

SUPPLEMENTARY INFORMATION

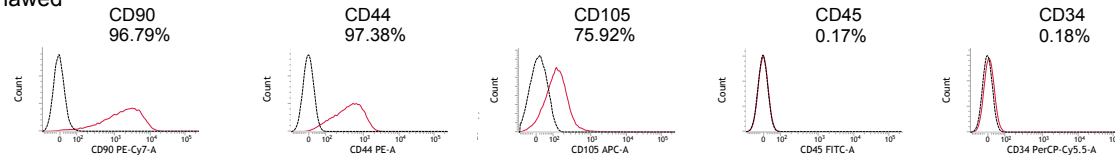
Additional supporting information may be found in the online version of this article:

Supplementary Figure 1

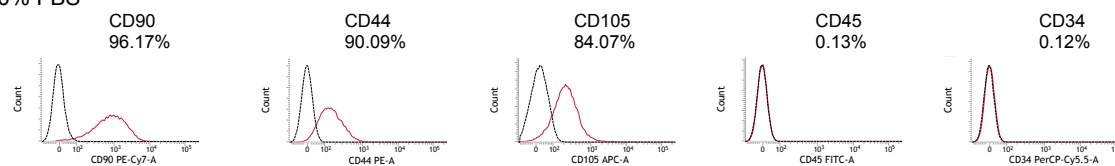
Cultured



Thawed



100% FBS



Supplementary Figure 1. Representative histogram of surface epitopes. Black line shows isotype control.