

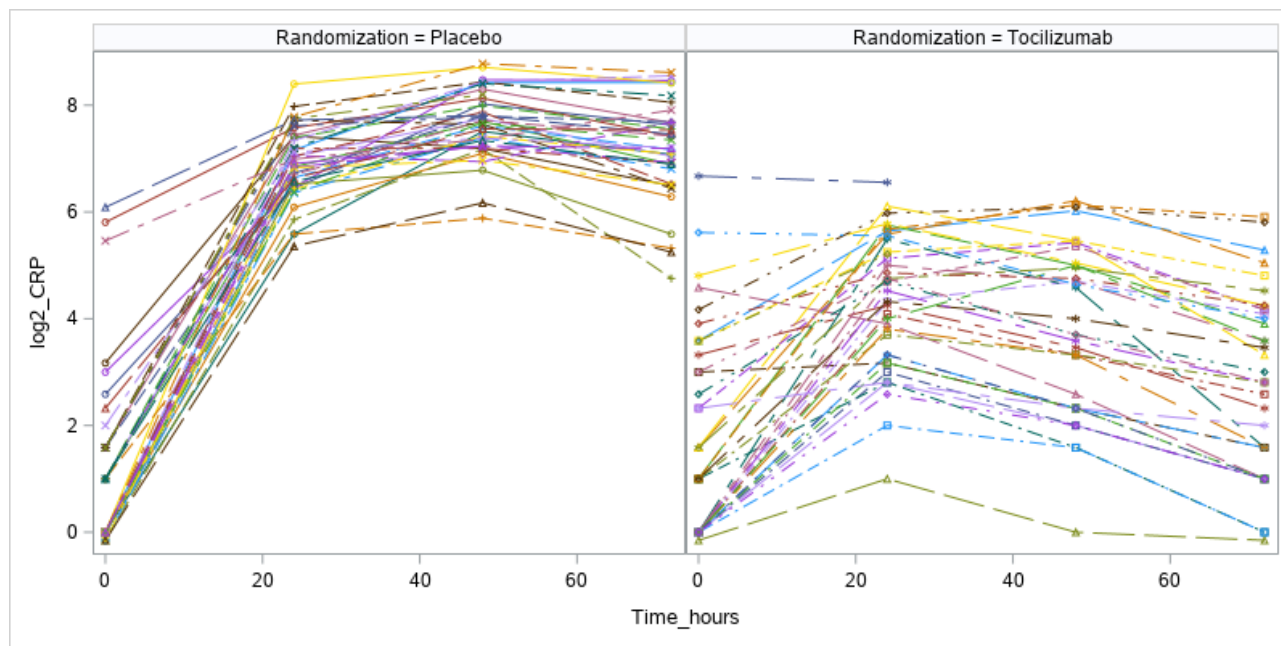
## **SUPPLEMENTAL MATERIAL**

Supplemental material for the manuscript:

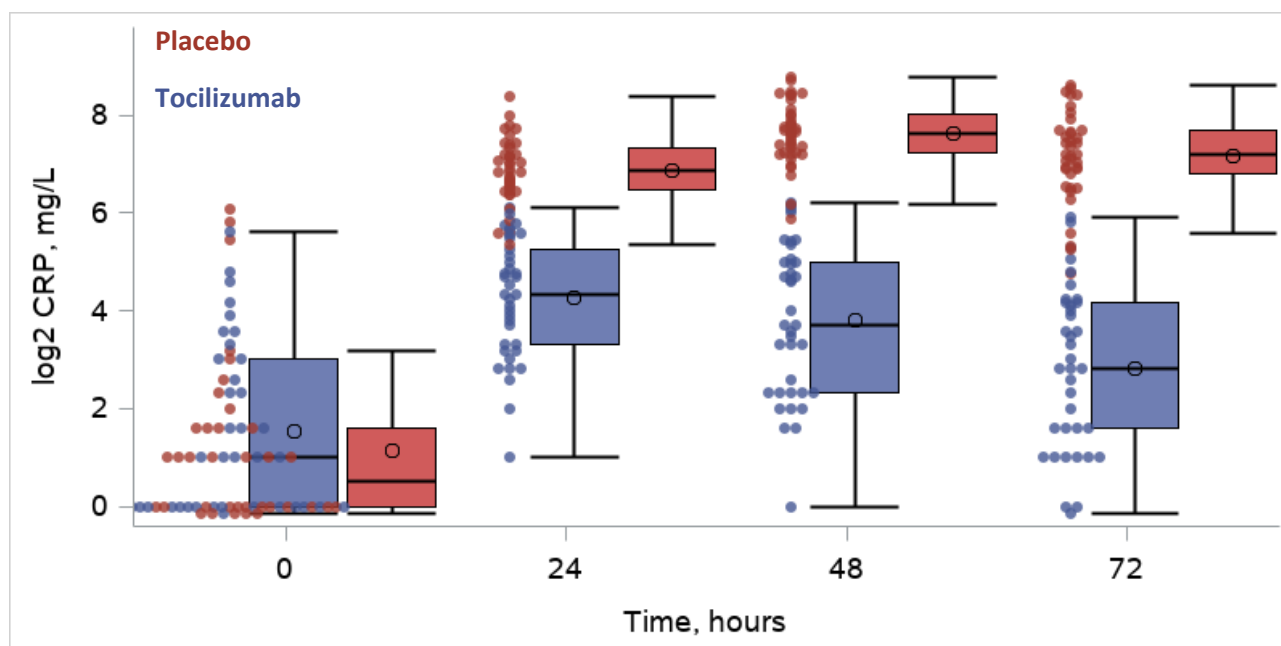
*Treatment effects of Interleukin-6 Receptor Antibodies for Modulating the Systemic Inflammatory Response after Out-of-Hospital Cardiac Arrest (The IMICA trial): a double-blinded, placebo-controlled, single-center, randomized clinical trial.*

Figure I. Observed values of CRP

A



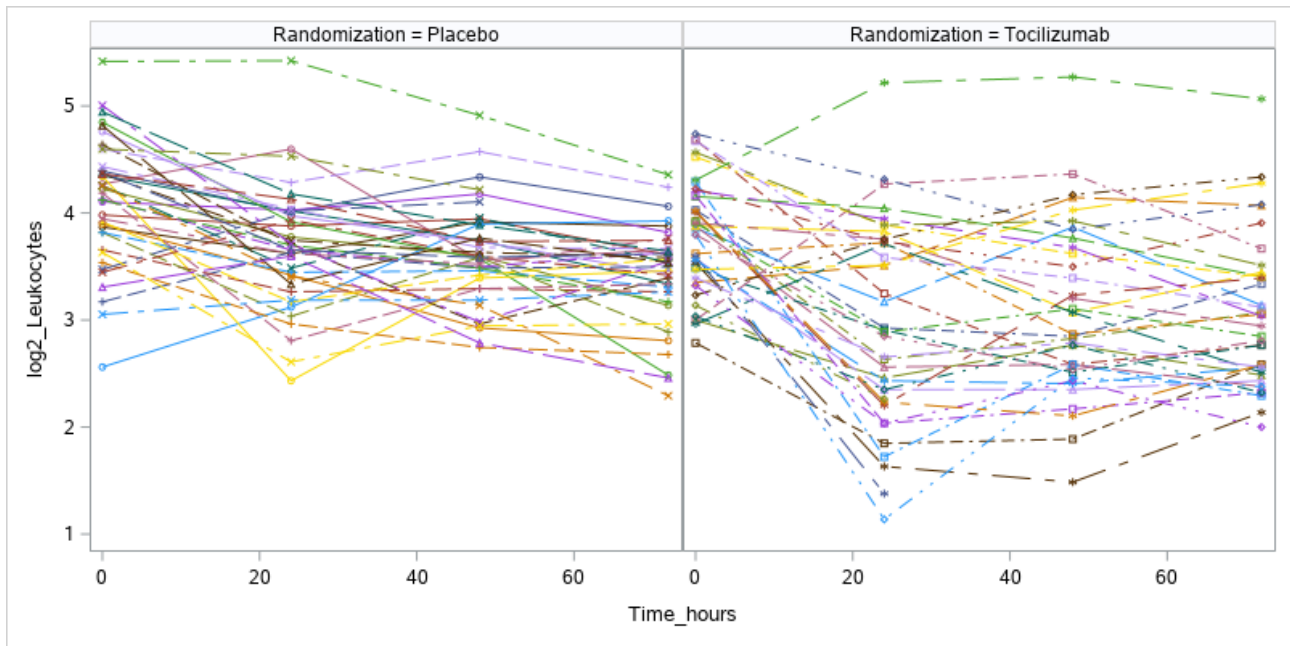
B



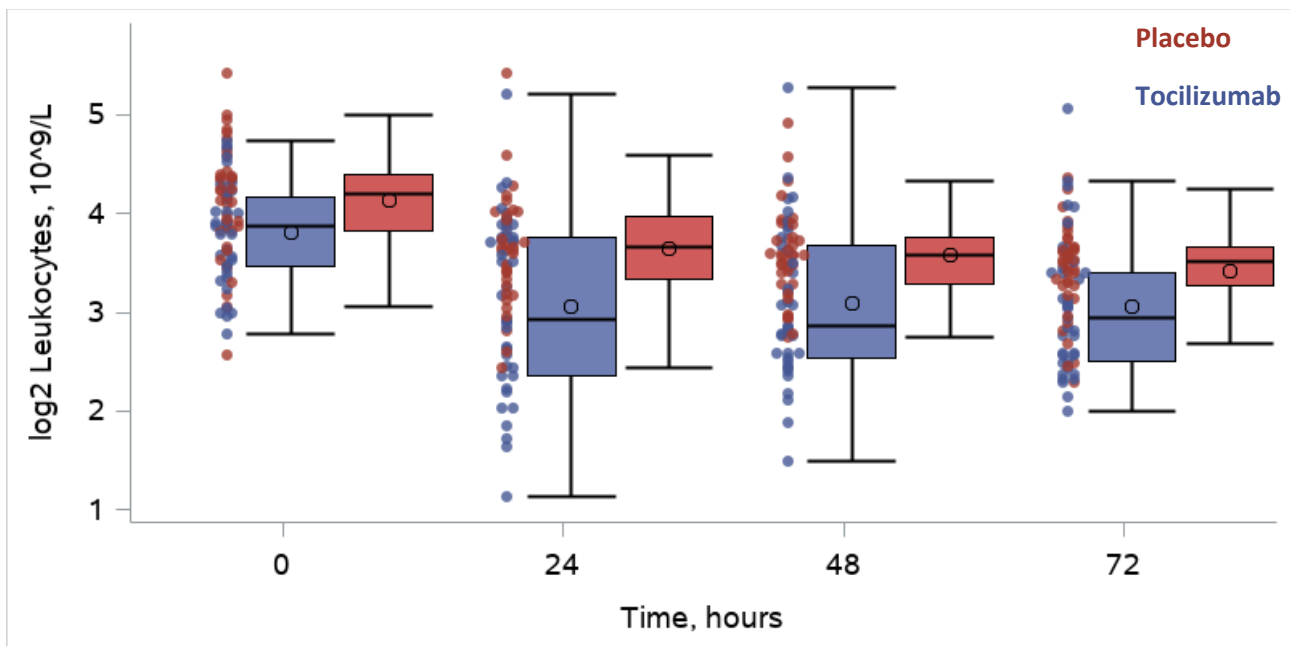
Legend: Observed values of CRP. A) Data overview: Spaghetti plot with log2 transformed individual values for all patients. B) Complete cases: Box-plot with an overlay of individual values after log2 transformation for patients with available values for all scheduled samples only. CRP: C-reactive protein.

Figure II. Observed values of leukocytes

A



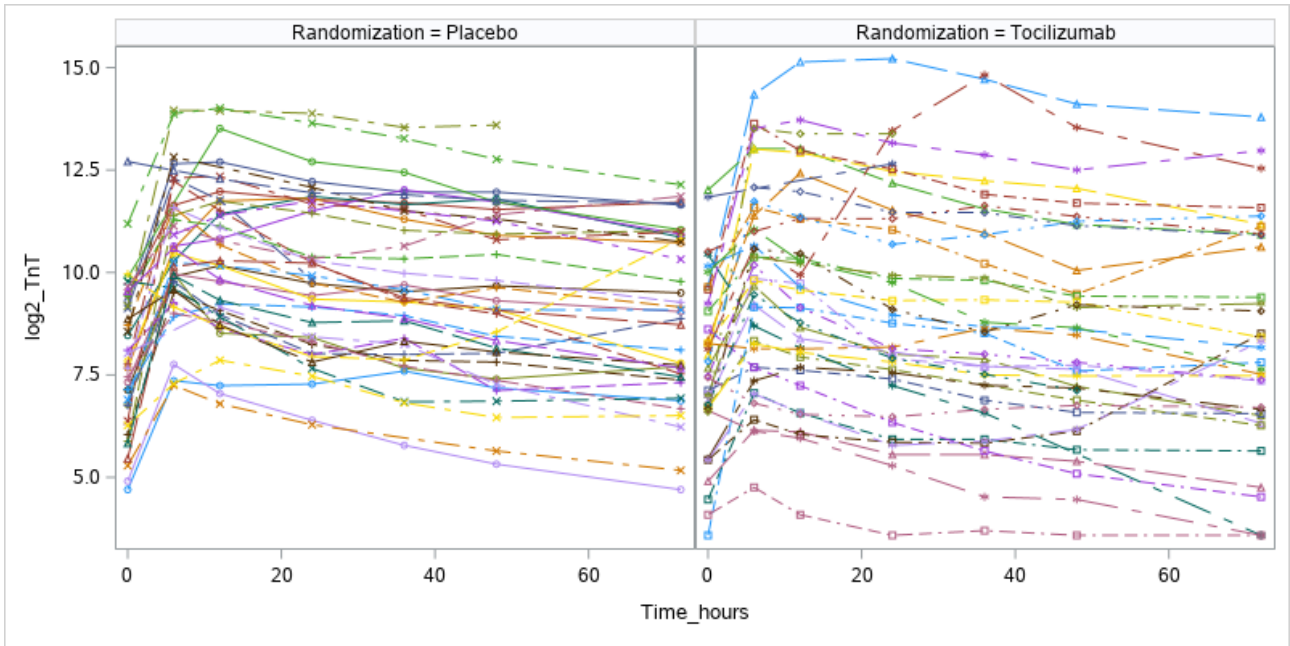
B



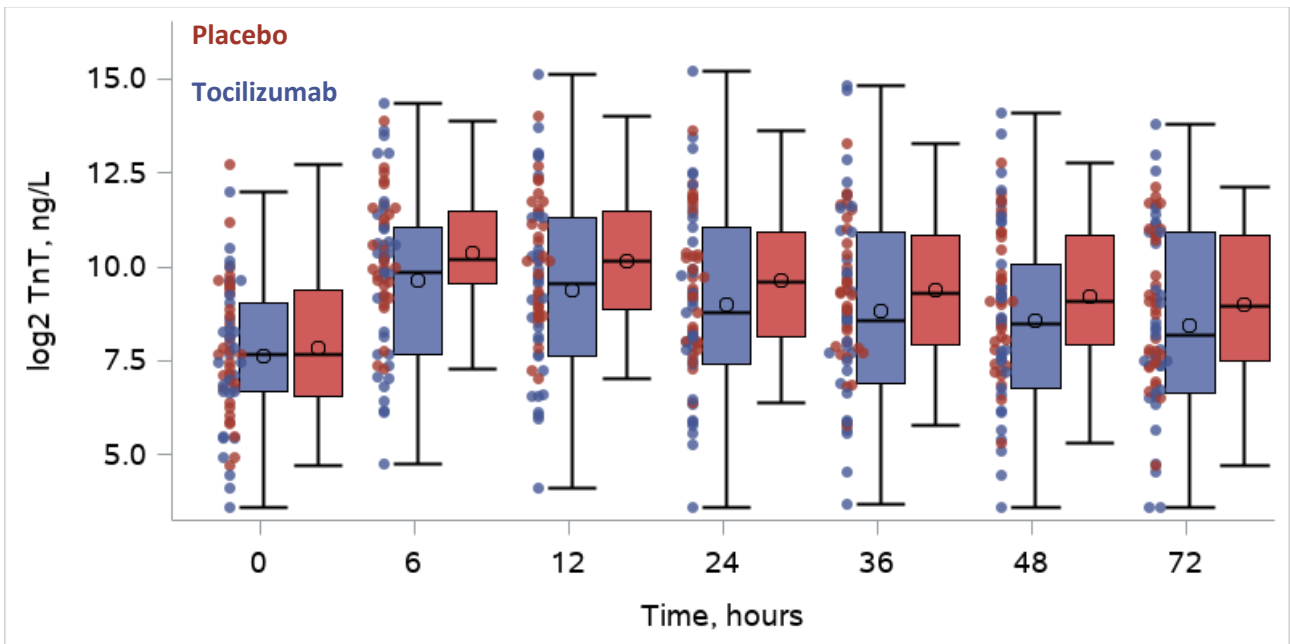
Legend: Observed values of Leukocytes. A) Data overview: Spaghetti plot with log<sub>2</sub> transformed individual values for all patients. B) Complete cases: Box-plot with an overlay of individual values after log<sub>2</sub> transformation for patients with available values for all scheduled samples only.

Figure III. Observed values of TnT

A



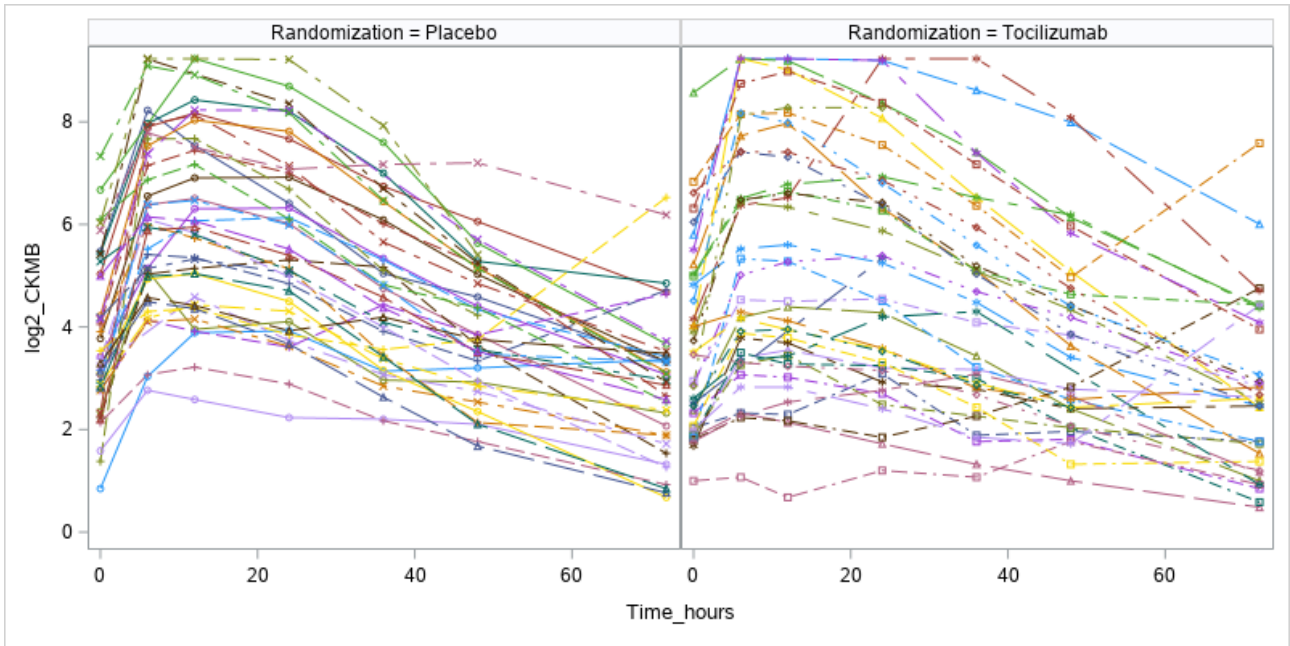
B



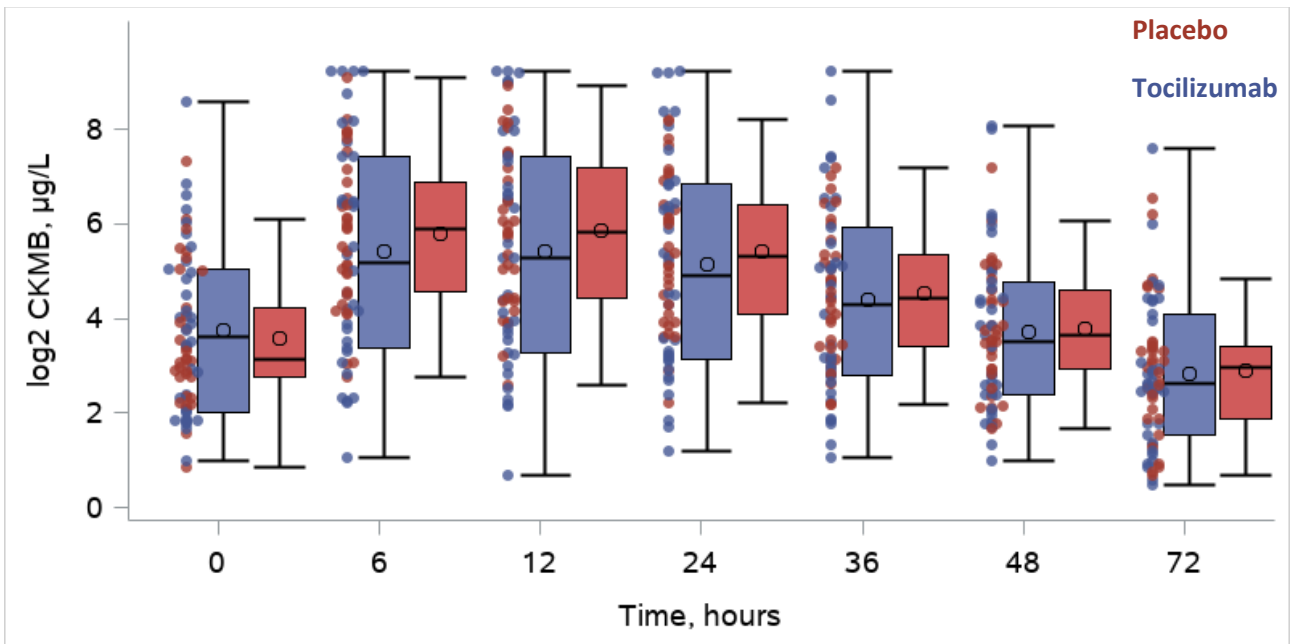
Legend: Observed values of TnT. A) Data overview: Spaghetti plot with  $\log_2$  transformed individual values for all patients. B) Complete cases: Box-plot with an overlay of individual values after  $\log_2$  transformation for patients with available values for all scheduled samples only. TnT: Troponin T.

Figure IV. Observed values of CKMB

A



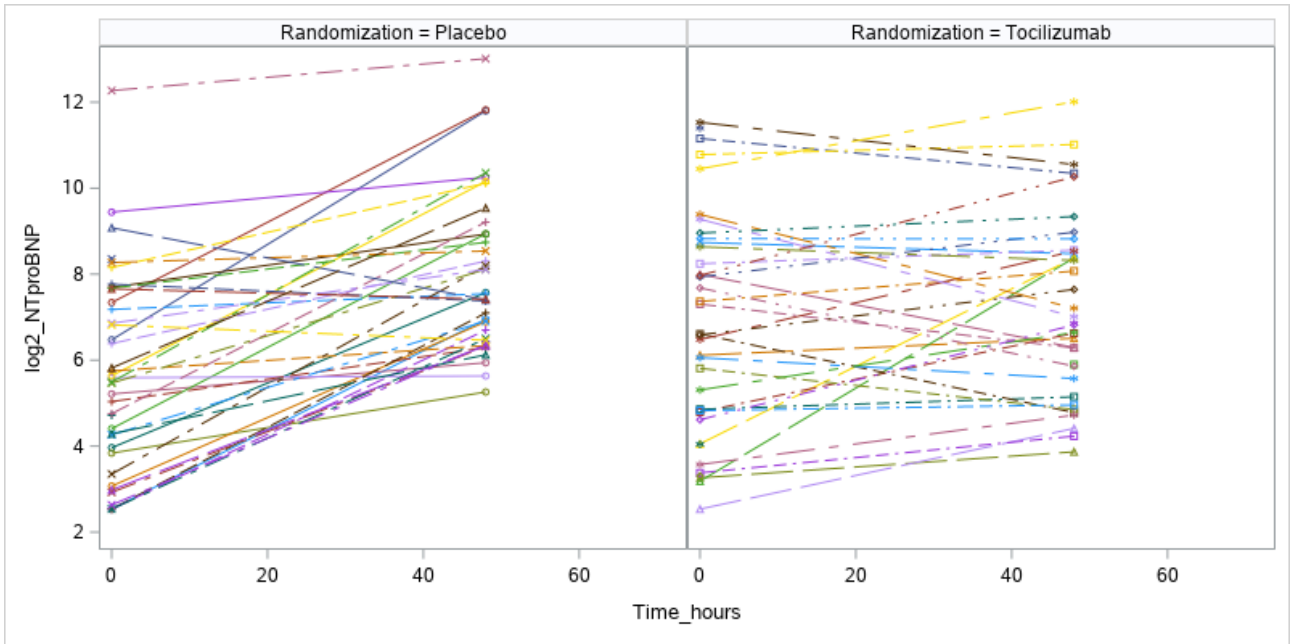
B



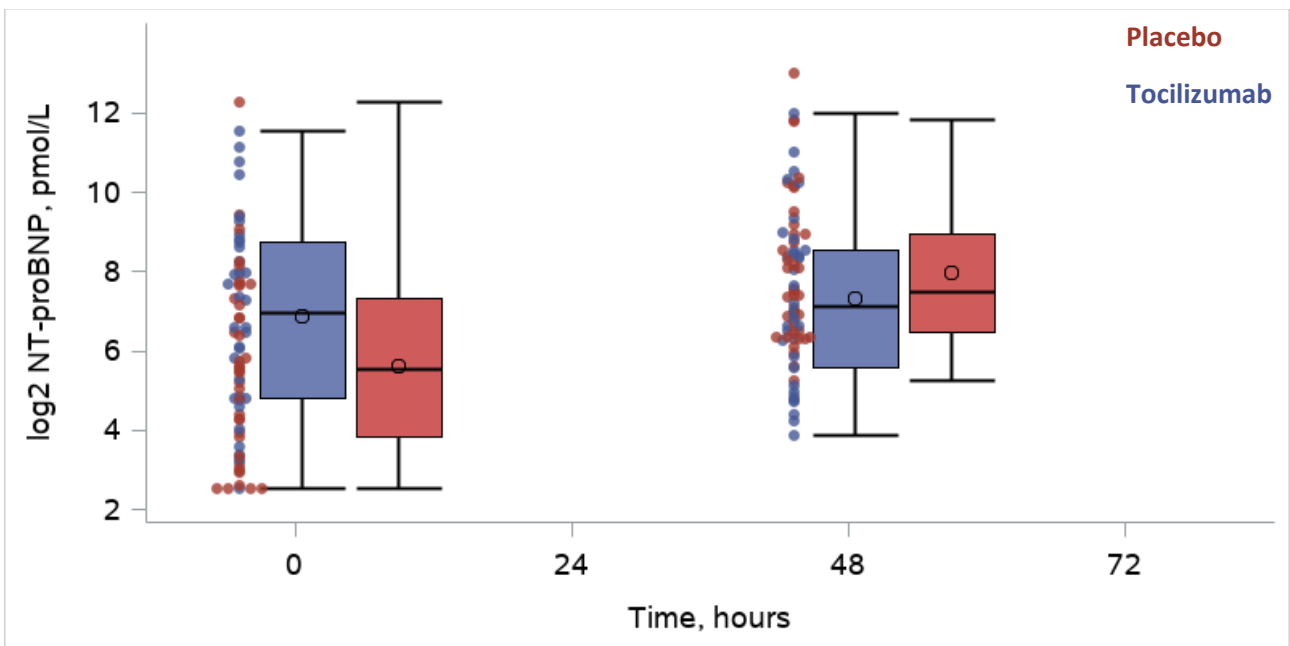
Legend: Observed values of CKMB. A) Data overview: Spaghetti plot with log<sub>2</sub> transformed individual values for all patients. B) Complete cases: Box-plot with an overlay of individual values after log<sub>2</sub> transformation for patients with available values for all scheduled samples only. CKMB: Creatine kinase myocardial band.

Figure V. Observed values of NT-proBNP

A



B



Legend: Observed values of NT-proBNP. A) Data overview: Spaghetti plot with log<sub>2</sub> transformed individual values for all patients. B) Complete cases: Box-plot with an overlay of individual values after log<sub>2</sub> transformation for patients with available values for all scheduled samples only. NT-proBNP: N-terminal pro B-type.