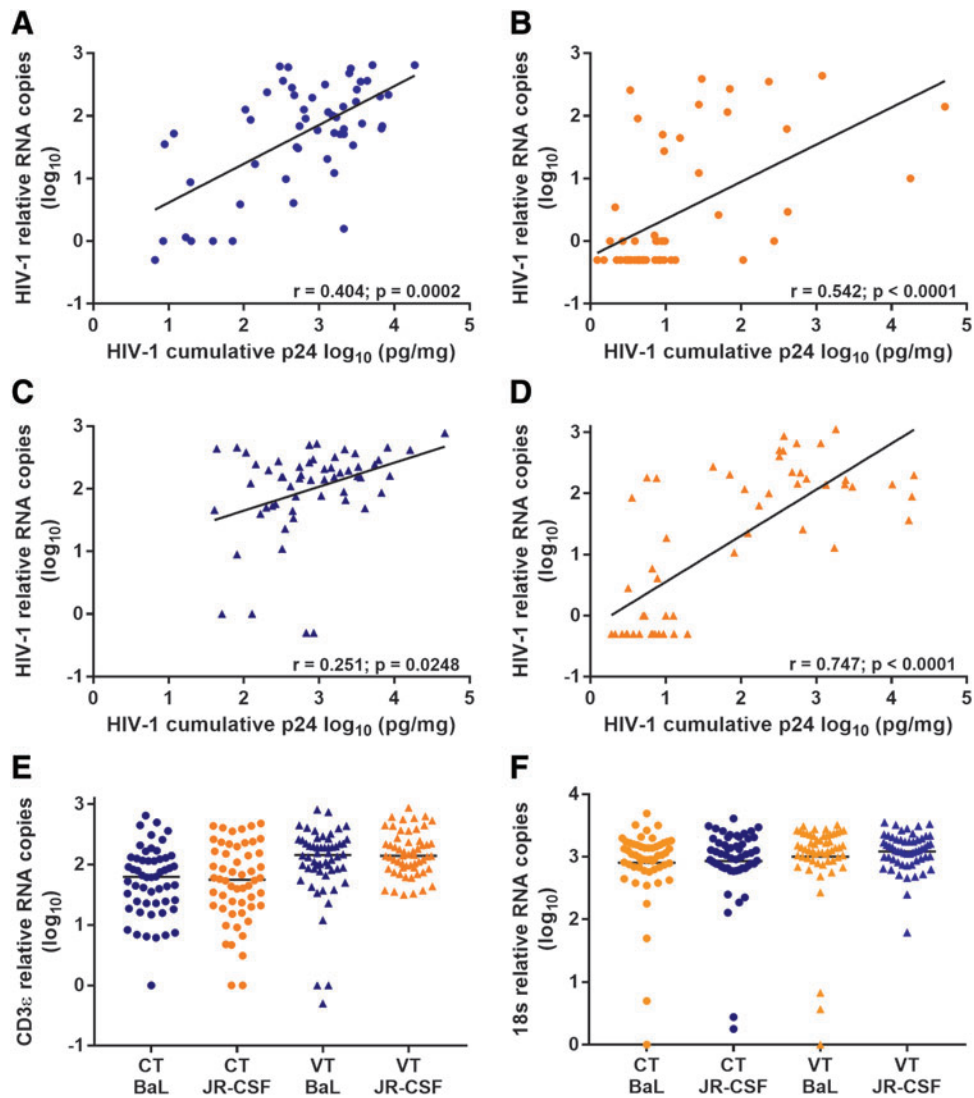


Supplementary Data



SUPPLEMENTARY FIG. S1. Correlation between cumulative p24 and HIV-1 relative RNA copies. Cumulative p24 in CT (A, C) and VT (B, D) biopsies was compared to HIV-1 relative RNA copies in tissues collected at study end. Linear regression showed that both measures significantly correlated. An RNA internal control of CD3_ε, which reflects relative T cell CD3 expression, shows comparable expression between HIV-1_{BaL} and HIV-1_{JR-CSF} treated CT and VT, but CT had significantly lower CD3_ε expression compared to VT (E). 18s relative RNA expression was similar between CT and VT, which reflects the general RNA internal control (F). CT, cervical tissue; VT, vaginal tissue.