

Table S1 Number and mortality of patients with different ACLF grades under EASL criteria

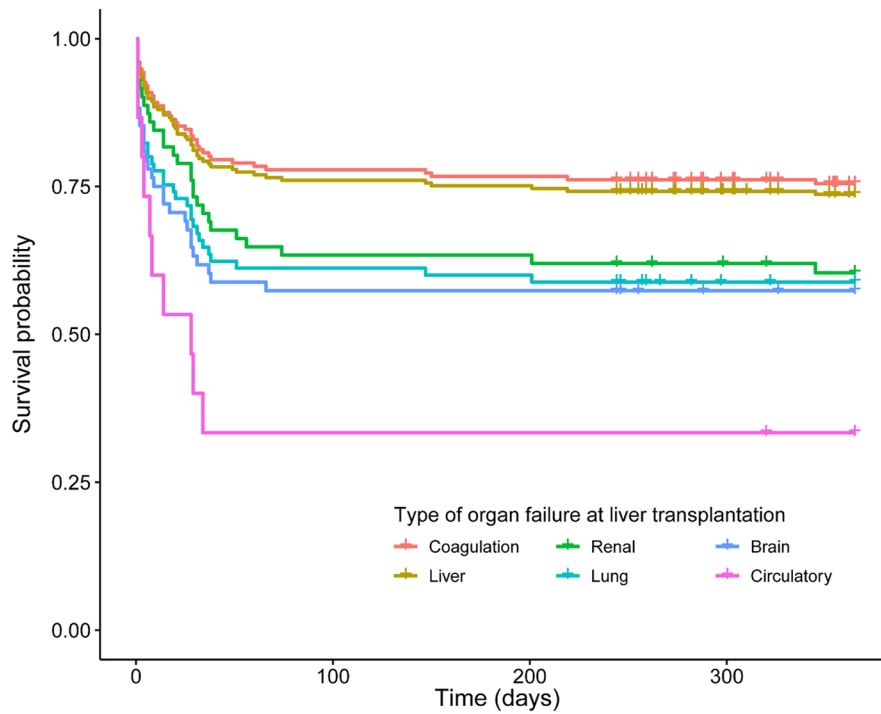
Criteria	n	Mortality, n (%)			
		28-day	90-day	180-day	1-year
HBV-ACLF (APASL criteria)	290	44 (15.2)	61 (21.0)	65 (22.4)	67 (23.1)
HBV-ACLF (EASL criteria)					
Non-ACLF	72	4 (5.6)	7 (9.7)	8 (11.1)	8 (11.1)
All ACLF grades	218	40 (18.3)	54 (24.8)	57 (26.1)	59 (27.1)
ACLF grade 1	15	0 (0.0)	1 (6.7)	1 (6.7)	1 (6.7)
ACLF grade 2	100	12 (12.0)	16 (16.0)	17 (17.0)	18 (18.0)
ACLF grade 3	103	28 (27.2)	37 (35.9)	39 (37.9)	40 (38.8)

ACLF, acute-on-chronic liver failure; APASL, Asian Pacific Association for the Study of the Liver; EASL, European Association for the Study of the Liver; HBV, hepatitis B virus.

Table S2 One-year post-transplant mortality, MELD, MELD-Na, Child-Pugh score of HBV-ACLF patients with different number of organ failures

Number of organ failure	n	1-year mortality	MELD	MELD-Na	Child-Pugh score
0	44	13.64%	16.5 (13.3–23.0)*	12.4 (5.3–22.6)*	10.0 (9.0–11.0)
1	43	6.98%	29.0 (24.0–33.0)*	30.1 (21.7–26.2)	11.0 (10.0–12.0)
2	100	18.00%	35.0 (32.0–39.5)*	34.0 (26.2–42.3)	11.0 (10.2–12.0)
3	56	32.14%	39.5 (34.0–44.8)	36.4 (25.5–45.1)	12.0 (11.0–13.0)
4	19	21.05%	42.0 (38.0–49.0)	37.9 (32.0–44.6)	12.0 (12.0–13.0)
5,6	28	62.29%	44.5 (39.3–49.8)	40.6 (34.1–46.0)	13.0 (12.0–13.0)

*, P value (<0.05) for comparisons between patients with one more organ failure. Where applicable, data are presented as median (interquartile range). ACLF, acute-on-chronic liver failure; HBV, hepatitis B virus; MELD, model for end-stage liver disease.



	Number of patients at risk			
	0	100	200	300
Coagulation	176	137	135	122
Liver	217	165	163	146
Renal	71	45	45	40
Lung	85	52	51	42
Brain	68	39	39	34
Circulatory	15	5	5	5

Figure S1 Patient survival probability stratified by the type of organ failure at the time of liver transplantation.

Table S3 Twenty-eight-day, 90-day, 6-month, and 1-year post-transplant mortality of HBV-ACLF patients with different type of organ failure

Type of organ failure	n	28-day mortality	90-day mortality	6-month mortality	1-year mortality
Liver	217	17.97%	23.96%	25.35%	26.27%
Lung	85	30.59%	38.82%	41.18%	41.18%
Renal	71	23.94%	36.62%	38.03%	39.44%
Brain	68	35.29%	42.65%	42.65%	42.65%
Coagulation	176	16.48%	22.16%	23.30%	24.43%
Cardiovascular	15	53.33%	66.67%	66.67%	66.67%

ACLF, acute-on-chronic liver failure; HBV, hepatitis B virus.

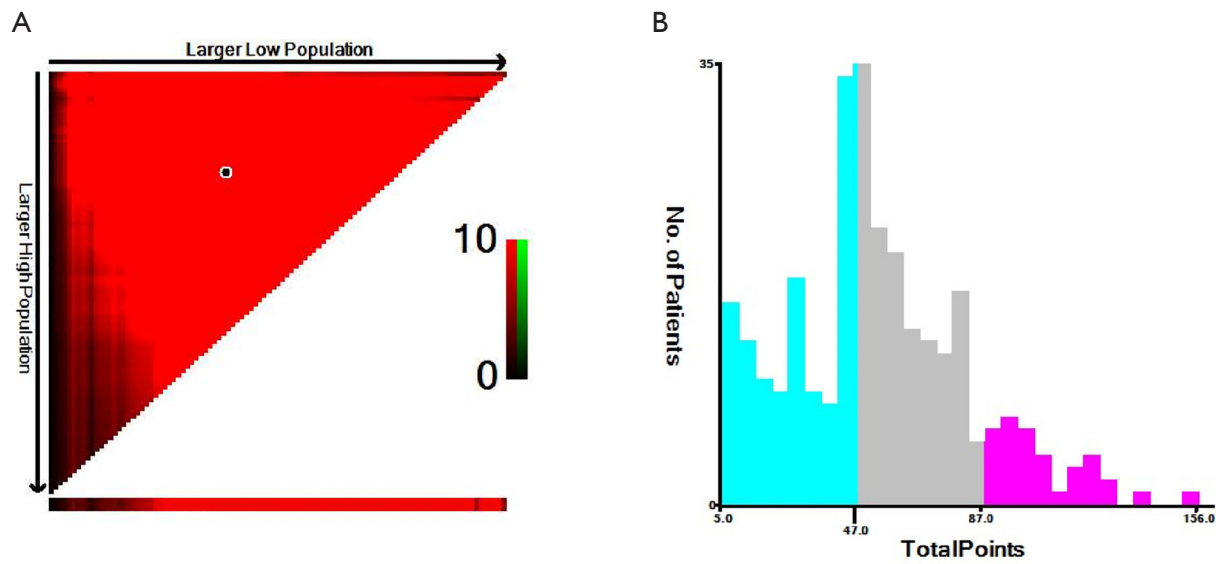


Figure S2 Cut-off value of total points calculated using the X-tile software. Coloration of the plot (A) represents the strength of the association at each division, ranging from low (dark, black) to high (green). The trisection cut-off value (blue: 0–47.0; grey: 47.1–87.0; red: ≥ 87.1) was demonstrated on a histogram (B) of all recruited patients