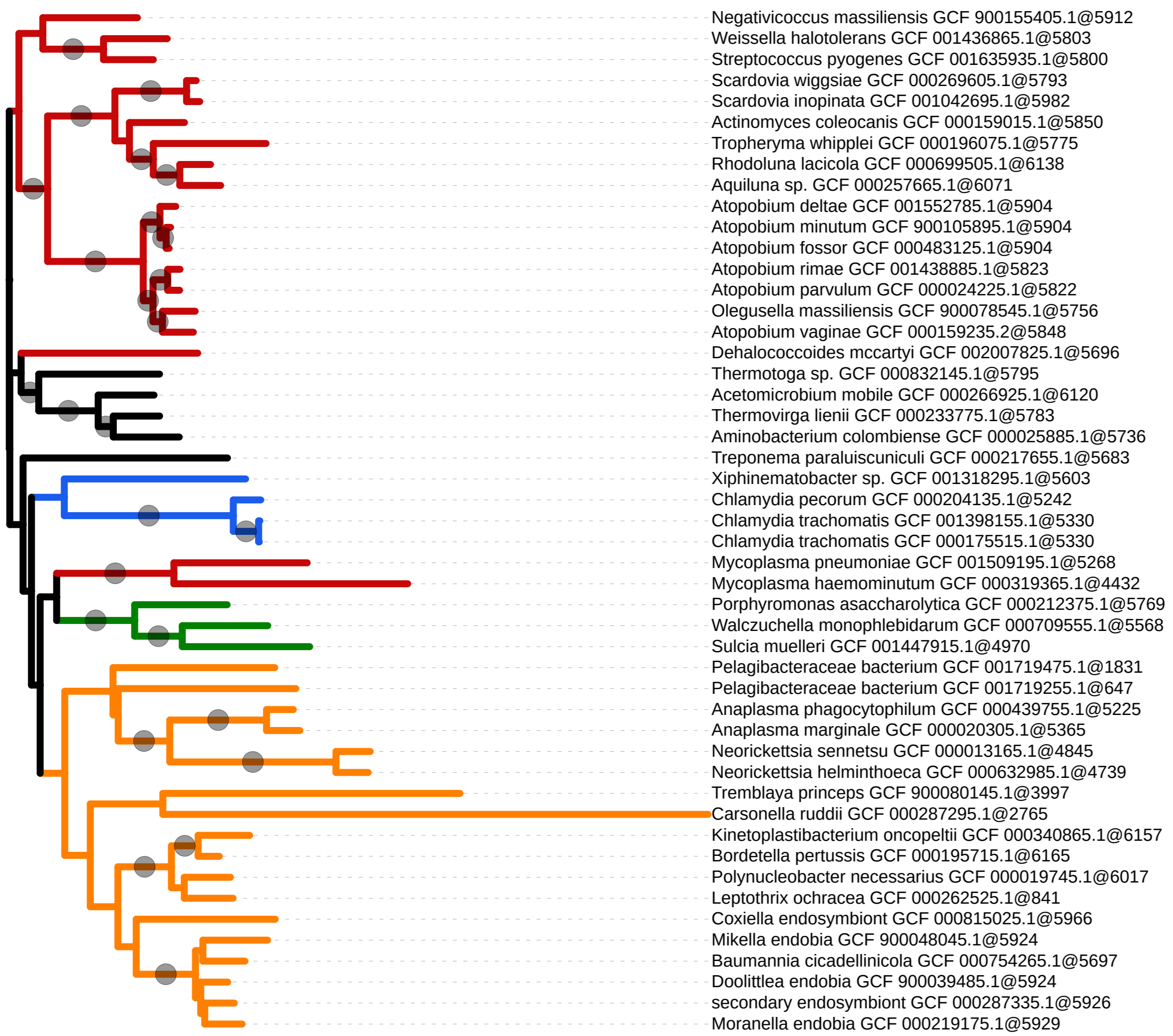


Tree scale: 0.1



- Negativicoccus massiliensis GCF 900155405.1@5912
- Weissella halotolerans GCF 001436865.1@5803
- Streptococcus pyogenes GCF 001635935.1@5800
- Scardovia wiggisiae GCF 000269605.1@5793
- Scardovia inopinata GCF 001042695.1@5982
- Actinomyces coleocanis GCF 000159015.1@5850
- Tropheryma whipplei GCF 000196075.1@5775
- Rhodoluna ladicola GCF 000699505.1@6138
- Aquiluna sp. GCF 000257665.1@6071
- Atopobium deltae GCF 001552785.1@5904
- Atopobium minutum GCF 900105895.1@5904
- Atopobium fossor GCF 000483125.1@5904
- Atopobium rimae GCF 001438885.1@5823
- Atopobium parvulum GCF 000024225.1@5822
- Olegusella massiliensis GCF 900078545.1@5756
- Atopobium vaginae GCF 000159235.2@5848
- Dehalococcoides mccartyi GCF 002007825.1@5696
- Thermotoga sp. GCF 000832145.1@5795
- Acetomicrobium mobile GCF 000266925.1@6120
- Thermovirga lienii GCF 000233775.1@5783
- Aminobacterium colombiense GCF 000025885.1@5736
- Treponema paraluisuniculi GCF 000217655.1@5683
- Xiphinematobacter sp. GCF 001318295.1@5603
- Chlamydia pecorum GCF 000204135.1@5242
- Chlamydia trachomatis GCF 001398155.1@5330
- Chlamydia trachomatis GCF 000175515.1@5330
- Mycoplasma pneumoniae GCF 001509195.1@5268
- Mycoplasma haemominutum GCF 000319365.1@4432
- Porphyromonas asaccharolytica GCF 000212375.1@5769
- Walczuchella monophlebidarum GCF 000709555.1@5568
- Sulcia muelleri GCF 001447915.1@4970
- Pelagibacteraceae bacterium GCF 001719475.1@1831
- Pelagibacteraceae bacterium GCF 001719255.1@647
- Anaplasma phagocytophilum GCF 000439755.1@5225
- Anaplasma marginale GCF 000020305.1@5365
- Neorickettsia sennetsu GCF 000013165.1@4845
- Neorickettsia helminthoeca GCF 000632985.1@4739
- Tremblaya princeps GCF 900080145.1@3997
- Carsonella ruddii GCF 000287295.1@2765
- Kinetoplastibacterium oncopeltii GCF 000340865.1@6157
- Bordetella pertussis GCF 000195715.1@6165
- Polynucleobacter necessarius GCF 000019745.1@6017
- Leptothrix ochracea GCF 000262525.1@841
- Coxiella endosymbiont GCF 000815025.1@5966
- Mikella endobia GCF 900048045.1@5924
- Baumannia cicadellinicola GCF 000754265.1@5697
- Doolittlea endobia GCF 900039485.1@5924
- secondary endosymbiont GCF 000287335.1@5926
- Moranella endobia GCF 000219175.1@5929

- Firmicutes**
- Actinobacteria**
- Chloroflexi**
- Thermotogales**
- Synergistaceae**
- Spirochaetaceae**
- Verrucomicrobia**
- Chlamydiaceae**
- Mycoplasma**
- Bacteroidetes**
- Alphaproteobacteria**
- Betaproteobacteria**
- Gammaproteobacteria**

**Terrabacteria Group**

**PVC Group**

**FCB Group**

**Proteobacteria**