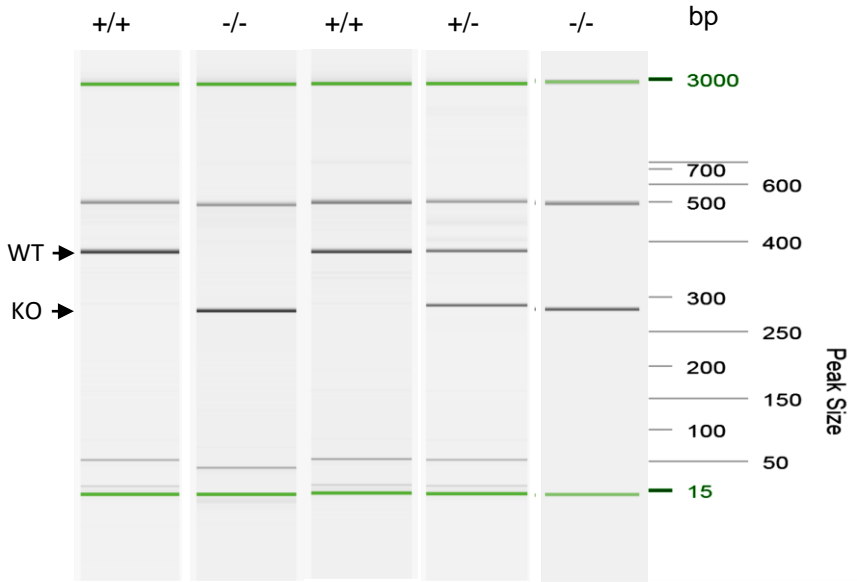
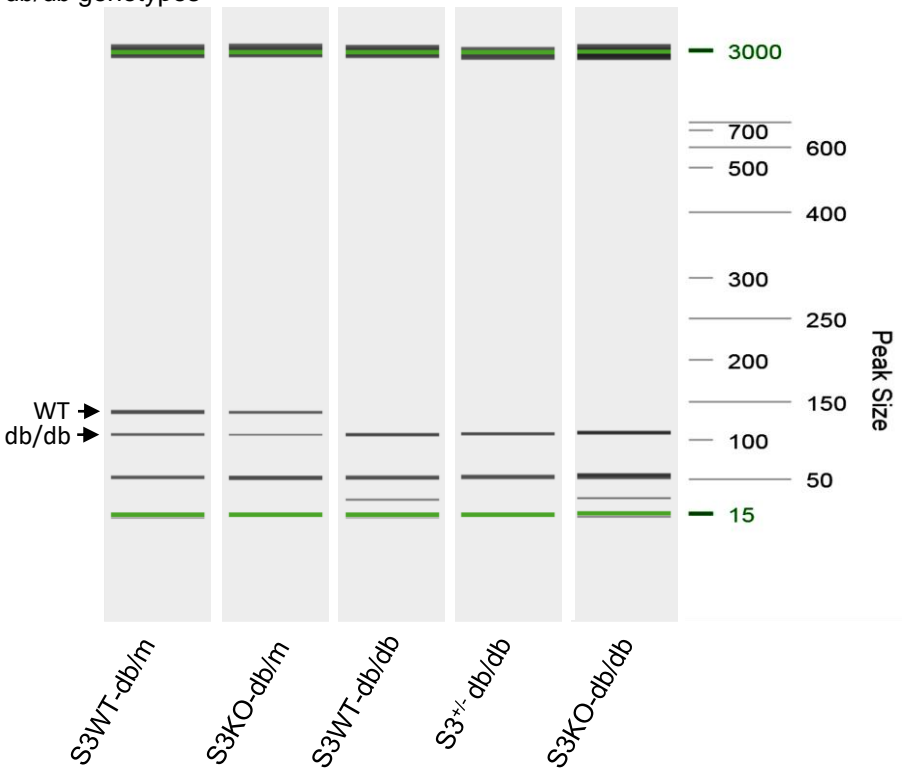


A Smad3 genotypes



B db/db genotypes



Supplementary Figure 1. Genotypic determination of Smad3 KO from db/db mice.

PCR with individual primers specific to Smad3 or db/db shows that Smad3 WT (431bp) and Smad3 KO (248bp) in db/m (WT 135bp) and db/db (108bp) mice are clearly identified and 5 mouse genotypes are determined.