

Figure S1 Figure showing the position of the different designed dsRNAs used in the present study to silence circ-10720 expression. A fragment of exon 12 and exon 6 from *CUL2* gene is shown, in the position where is produced the binding of both exons during circularization of circ-10720.

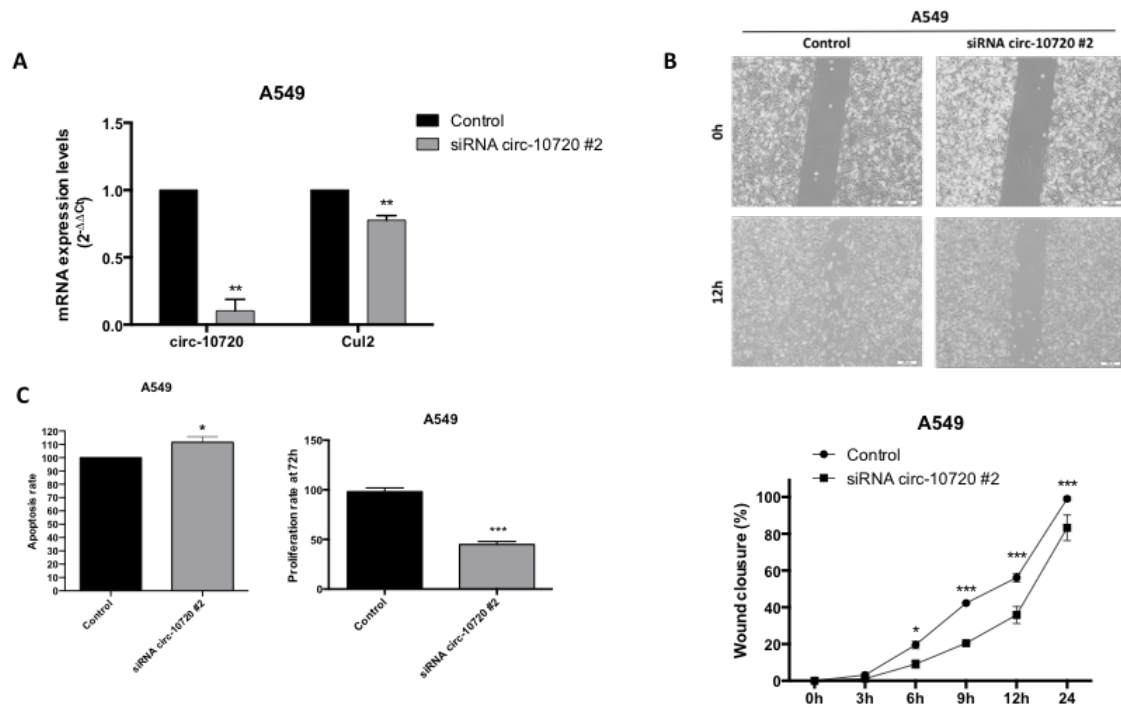


Figure S2 Validation of key experiments in A549 using siRNA circ-10720 #2. (A) circ-10720 and *CUL2* mRNA expression in control *vs.* siRNA cells. (B) Migration assay. (C) Apoptosis and proliferation assay.

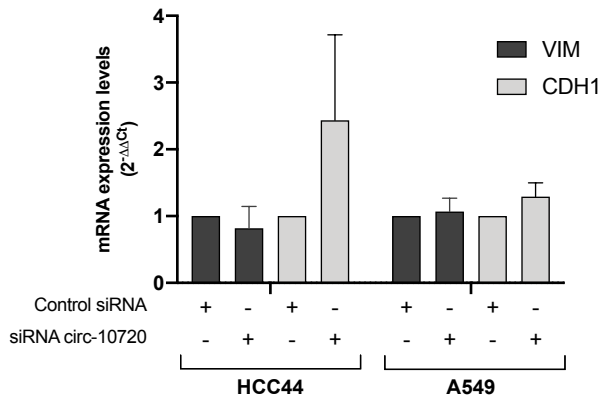


Figure S3 mRNA expression levels of VIM and CDH1 after silencing circ-10720. VIM, Vimentin; CDH1, E-cadherin.

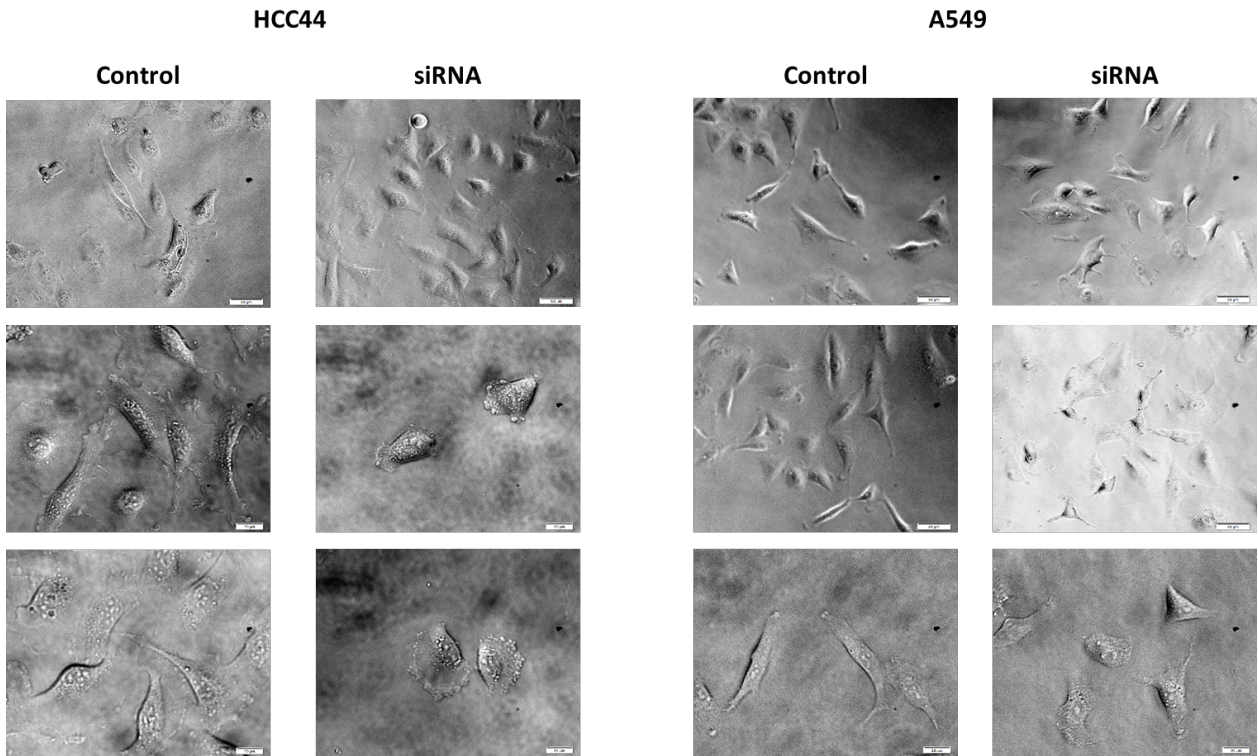


Figure S4 Bright field images to observe morphological changes of control or circ-10720 silenced HCC44 (left panel) and A549 (right panel) cell lines.

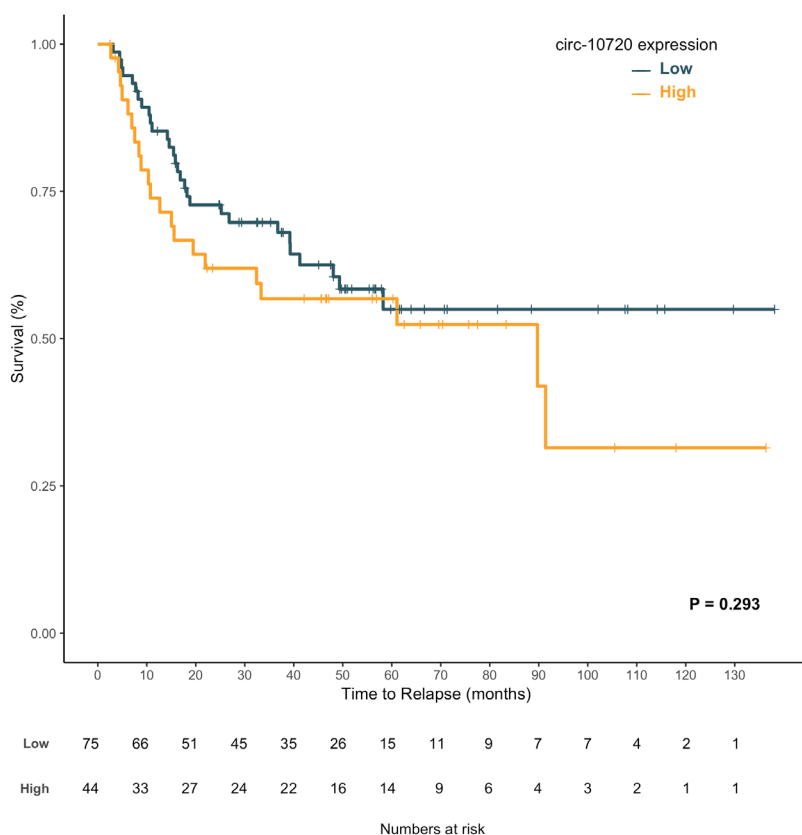


Figure S5 TTR analysis in the whole cohort (n=119) according circ-10720 levels. TTR, time to relapse.

Table S1 DsiRNAs sequences used in the study

Circ-10720 dsiRNAs	Strand	Sequence
siRNA circ-10720	Sense	5'-CAUAUCCAAUGCUAGCAGUUCAGG-3'
	AntiSense	5'-CCUGAACUGCUAGCAUUGGAUAUG-3'
siRNA circ-10720 #2	Sense	5'-CUGAACUGCUAGCAUUGGAUAUGU-3'
	AntiSense	5'-ACAUAUCCAAUGCUAGCAGUUCAG-3'

Table S2 Main clinical characteristics of patients not receiving adjuvant treatment (n=83)

Characteristics	Value	N=83 (%)	TTR, P value
Sex	Male	65 (78.3)	0.379
	Female	18 (21.7)	
Age, yrs	Mean [range]	67 [51–77]	0.203
	≤65	33 (39.8)	
	>65	50 (60.2)	
ECOG PS	0	21 (25.3)	0.927
	1	62 (74.7)	
Stage	I	67 (80.7)	0.078
	II	9 (10.8)	
	III	7 (8.4)	
Histology	ADK	43 (51.8)	0.948
	SCC	35 (42.2)	
	Adenosquamous carcinoma	1 (1.2)	
	Large cell carcinoma	1 (1.2)	
	Neuroendocrine	2 (2.4)	
	Sarcomatoid	1 (1.2)	
Smoking history	Current smoker	30 (36.2)	0.934
	Former smoker	44 (53)	
	Never smoker	9 (10.8)	
Type of surgery	Lobectomy	66 (79.5)	0.946
	Pneumonectomy	5 (6.0)	
	Atypical resection	5 (6.0)	
	Anatomical resection	7 (8.5)	
Relapse	No	51 (61.4)	–
	Yes	32 (38.6)	
Mutation status	TP53 mutation	25/62 (40.3)	0.004
	KRAS mutation	12/71 (16.9)	

TTR, time to relapse; ECOG PS, Eastern Cooperative Oncology Group performance status; ADK, adenocarcinoma; SCC, squamous cell carcinoma.