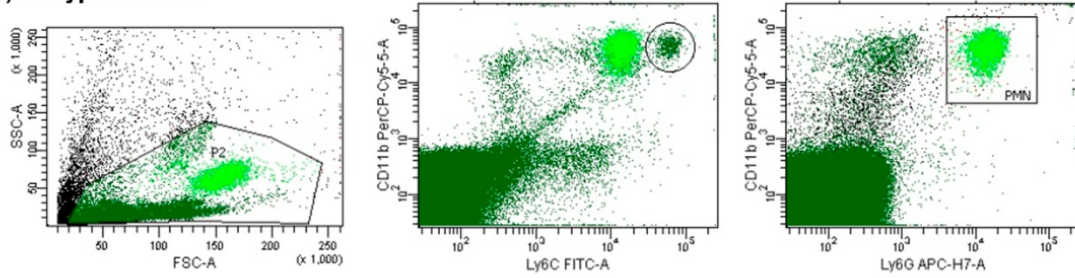
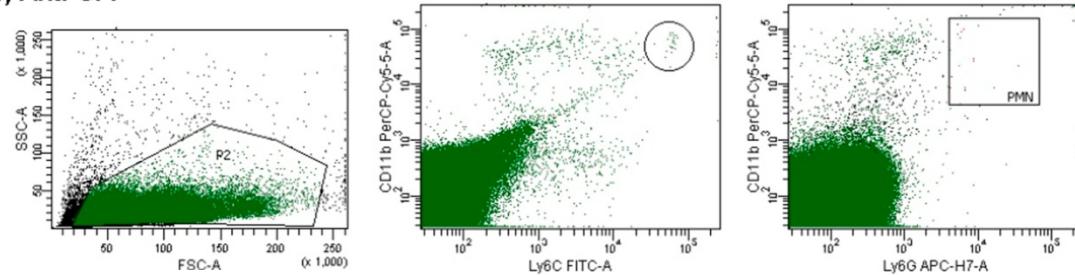


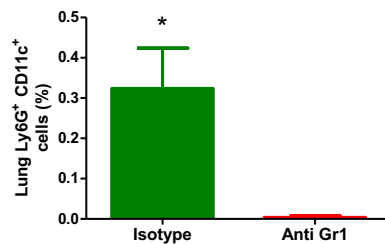
A) Isotype control



B) Anti-Gr1



C)



Supplemental Figure 1. Depletion of Gr1⁺ cells. Mice (n=3) were i.p. treated with 100 μ g of isotype control antibody rat IgG2b, clone HB152 (A) or monoclonal anti-Gr1 antibody clone RB6-8C5, (B) and after 12 h were i.n. treated with PMBL (18 μ g/30 μ l). Peripheral blood was drawn (24 h after PMBL treatment) to assess the efficacy of PMNs depletion by flow cytometry using the following antibodies CD11b-PerCPCy5, Ly6C-FITC y Ly6G-APCCy7. The administration of RB6-8C5 antibodies induced almost absolute reduction in peripheral blood PMNs populations assessed both as CD11b⁺/Ly6C⁺ (circle) and CD11b⁺/Ly6G⁺ (square) 24 h after PMBL treatment, compared with those receiving the isotype control antibody. (C) Mean \pm SEM of lung Ly6G⁺ CD11b⁺ cells (shown as % from total lung viable cells).*, p<0.05, Unpaired Man Whitney Test.