

Supplementary materials

Figure S1: Cell viability of NCM460. Cell viability was determined in following propranolol concentrations: 0  $\mu$ M, 20  $\mu$ M, 40  $\mu$ M, 60  $\mu$ M, 80  $\mu$ M, 100  $\mu$ M for 24h, 48h and 72h by MTT assay.

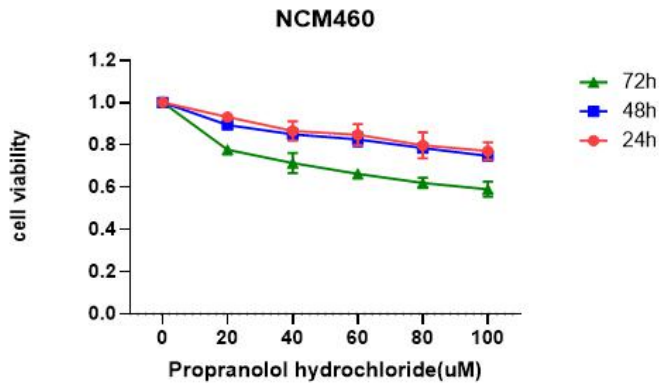
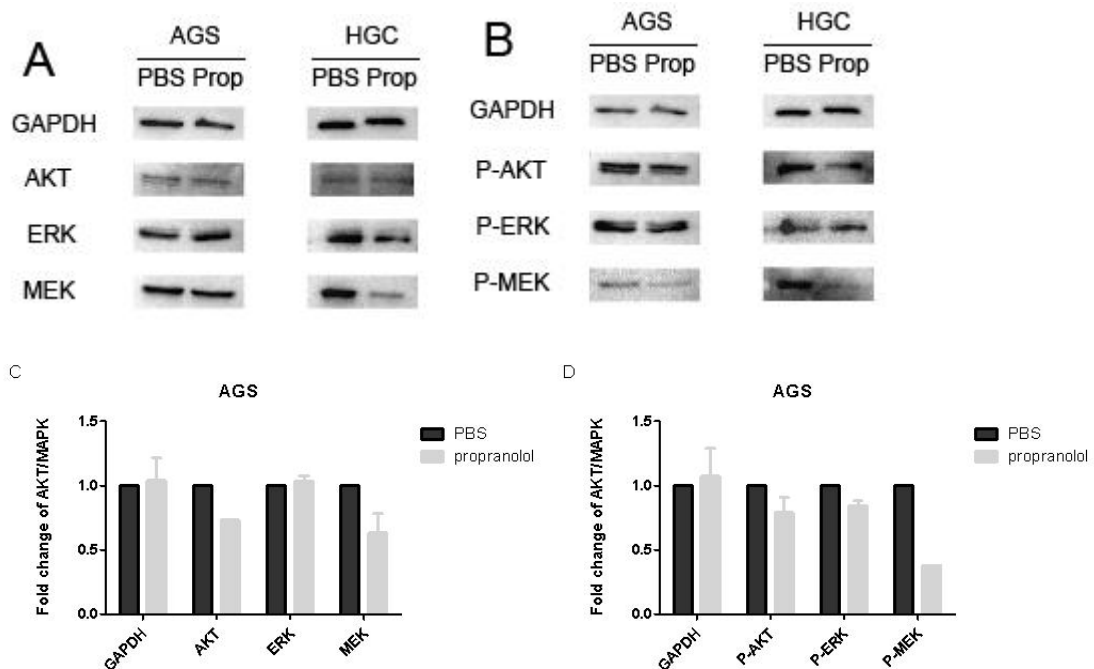
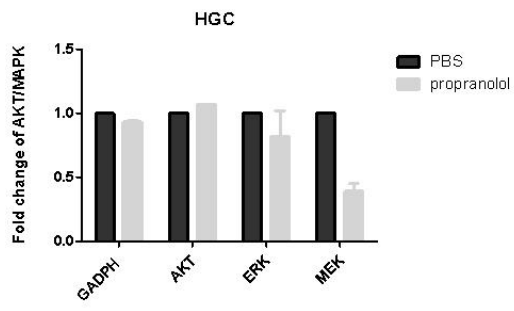


Figure S2: Propranolol inhibited proliferation by inhibiting AKT/MAPK pathway. A-B, The expression of GAPDH, AKT, MEK, ERK, p-AKT, p-MEK, p-ERK following treatment of propranolol (corresponding IC<sub>50</sub> concentration) for 24h in AGS and HGC cell lines. E-F, Quantification of each protein. Results are presented as mean $\pm$ SEM. All experiments were repeated for at least three times independently.



E



F

