

# THE LANCET

## Infectious Diseases

### Supplementary appendix

This appendix formed part of the original submission and has been peer reviewed. We post it as supplied by the authors.

Supplement to: Lund LC, Hallas J, Nielsen H, et al. Post-acute effects of SARS-CoV-2 infection in individuals not requiring hospital admission: a Danish population-based cohort study. *Lancet Infect Dis* 2021; published online May 10. [https://doi.org/10.1016/S1473-3099\(21\)00211-5](https://doi.org/10.1016/S1473-3099(21)00211-5).

## Supplementary material

### Appendix

Appendix S1. Outcome definition for acute kidney injury.

### Figures

Figure S1. Propensity score distributions for non-hospitalised individuals tested positive or negative for SARS-CoV-2.

Figure S2. Area graph depicting the proportion of individuals having reached a maximum severity healthcare state during follow-up for each cohort.

Figure S3. Histogram of the number of general practitioner and hospital outpatient clinic visits for SARS-CoV-2 positive and test-negative individuals.

### Tables

Table S1. List of outcomes, components of outcomes, ICD-10 and ATC codes used to define outcomes

Table S2. ICD-10 and ATC codes used to define baseline covariates included in the propensity score model

Table S3. Number of events, risks, risk differences and risk ratios for the initiation of drug groups potentially representing post-acute effects of COVID-19 during the period 2 weeks to 6 months after a SARS-CoV-2 test.

Table S4. Number of events, risks, risk differences and risk ratios for hospital diagnoses potentially representing post-acute effects of COVID-19 during the period 2 weeks to 6 months after a SARS-CoV-2 test.

Table S5. Rates of health care utilisation 6 months to 2 weeks before and 2 weeks to 6 months after a SARS-CoV-2 test.

Table S6. Number of reinitiators and risk estimates for drugs suspected to represent delayed complications of SARS-CoV-2 infection during the period 2 weeks to 6 months after a SARS-CoV-2 test.

Table S7. Number of readmissions and risk estimates for diagnoses suspected to represent delayed complications of SARS-CoV-2 infection during the period 2 weeks to 6 months after a SARS-CoV-2 test.

Table S8. Hypothesis-free screening for increased risks of initiating a given drug 2 weeks to 6 months after SARS-CoV-2 infection

Table S9. Hypothesis-free screening for increased risks of receiving first hospital diagnoses 2 weeks to 6 months after SARS-CoV-2 infection.

Table S10. Baseline characteristics of individuals with non-hospitalised SARS-CoV-2 infection and individuals hospitalised with SARS-CoV-2 infection.

Table S11. Number of initiators and risks for drugs suspected to represent delayed complications of SARS-CoV-2 infection during the period 2 weeks to 6 months after a SARS-CoV-2 test.

Table S12. Number of first-ever diagnoses and risks for diagnoses suspected to represent delayed complications of SARS-CoV-2 infection during the period 2 weeks to 6 months after a SARS-CoV-2 test.

Table S13. Number of events, risks, risk differences and risk ratios for the initiation of drug groups potentially representing post-acute effects of COVID-19 during the period 2 to 14 weeks after a SARS-CoV-2 test.

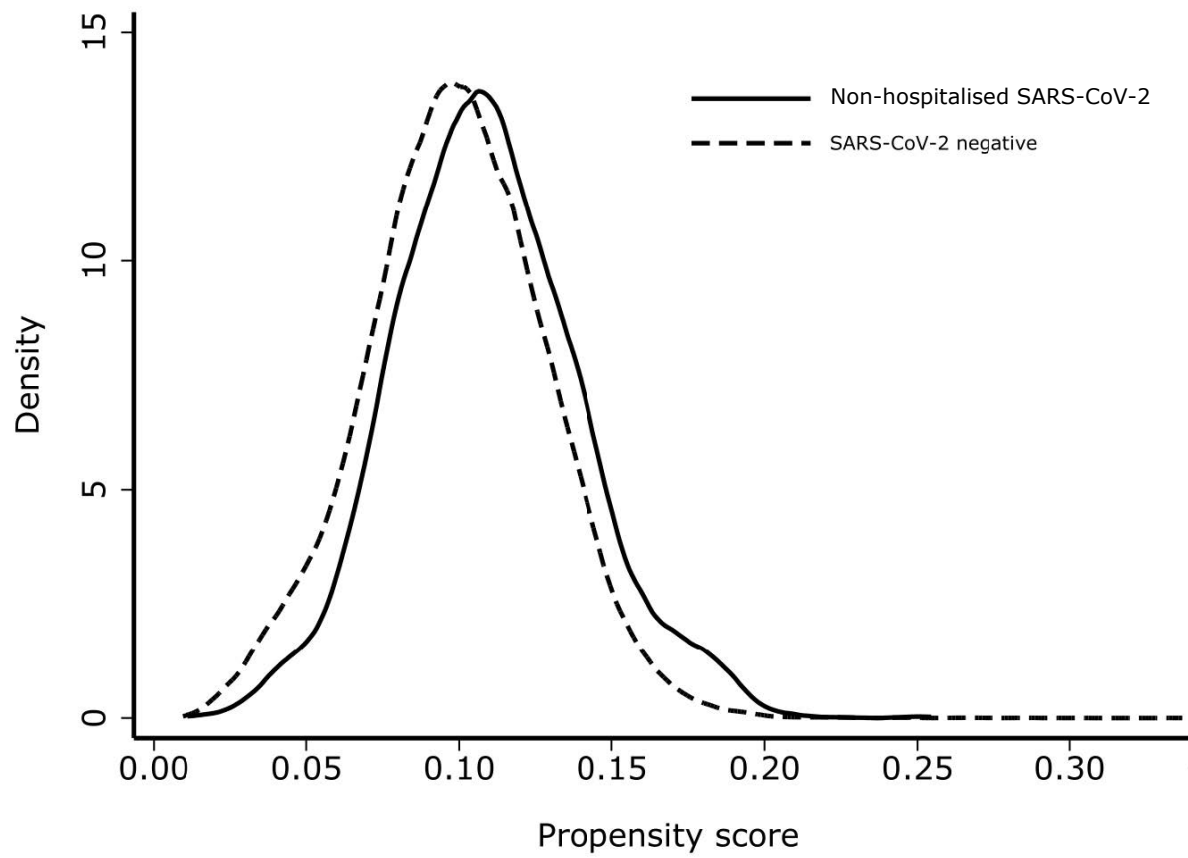
Table S14. Number of events, risks, risk differences and risk ratios for hospital diagnoses potentially representing post-acute effects of COVID-19 during the period 2 to 14 weeks after a SARS-CoV-2 test.

Table S15. Rates of health care utilisation 14 to 2 weeks before and 2 to 14 weeks after a SARS-CoV-2 test.

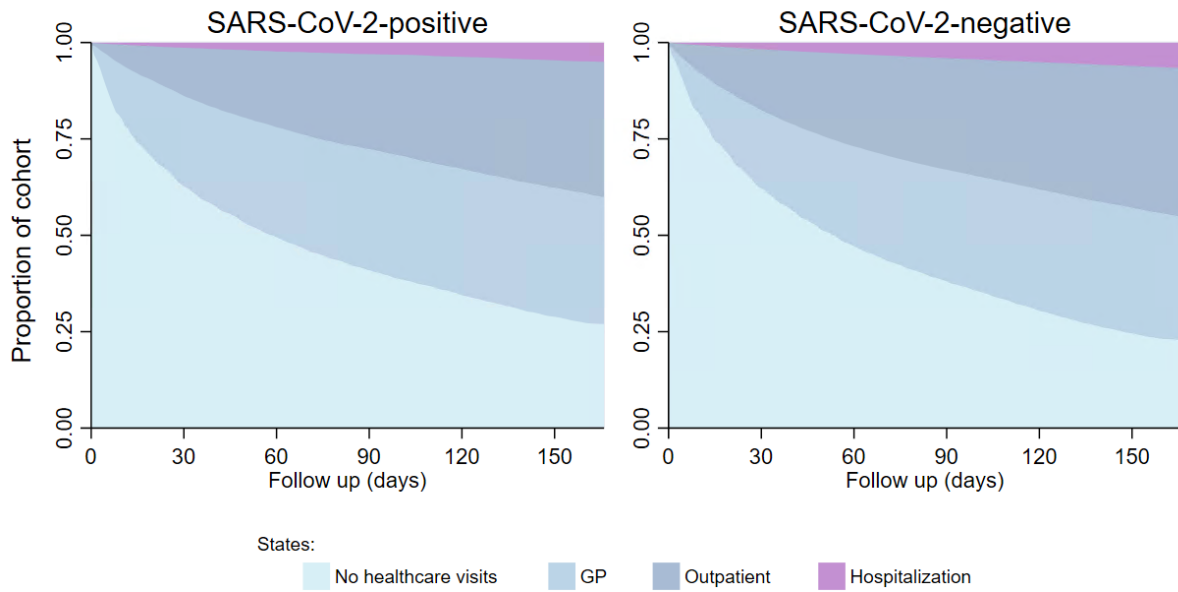
**Appendix S1. Outcome definition used for acute kidney injury.**

The outcome of acute kidney injury was defined based on Kidney Disease Improving Global Outcomes guideline criteria (Kidney International Supplements(2012)2,1; doi:10.1038/kisup.2012.1). Any creatinine measurement taken during follow up was evaluated. For each measurement, baseline creatinine was calculated as the median creatinine during the period 365-7 days prior to the measurement being evaluated. To ensure that the onset of the acute kidney injury was recent, i.e. not during the primary SARS-CoV-2 infection, we demanded a “normal” creatinine measurement ( $\pm 10\%$  of the baseline creatinine) up to 7 days prior to the measurement being evaluated. Creatinine measurements that greater than 1.5 times the baseline value were considered to represent acute kidney injury. In the case of missing creatinine measurements, individuals were considered not to have had acute kidney injury during follow-up.

Figure S1. Propensity score distributions for non-hospitalised individuals tested positive or negative for SARS-CoV-2.



**Figure S2. Area graph depicting the proportion of individuals having reached a maximum severity healthcare state during follow-up for each non-hospitalised cohort.**  
The possible states are (in ascending order): no health care visits, GP visit, hospital outpatient clinic visit, emergency department visit, inpatient hospitalisation, death

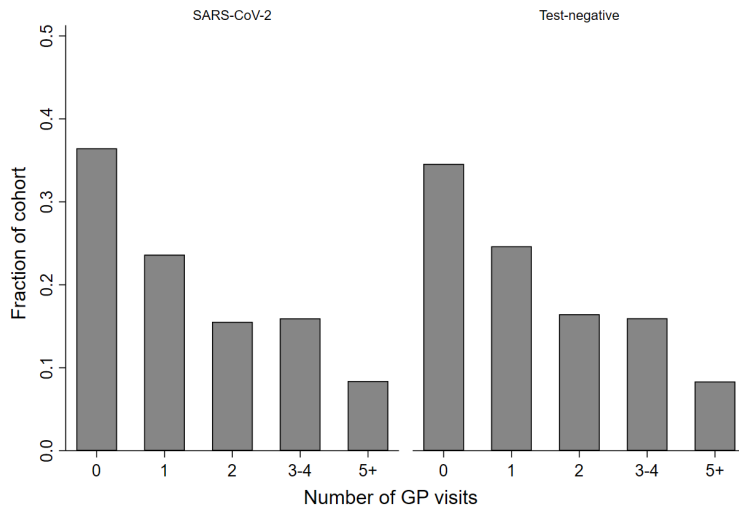


**Figure S3. Histogram of the number of general practitioner and hospital outpatient clinic visits for SARS-CoV-2 positive and test-negative individuals.**

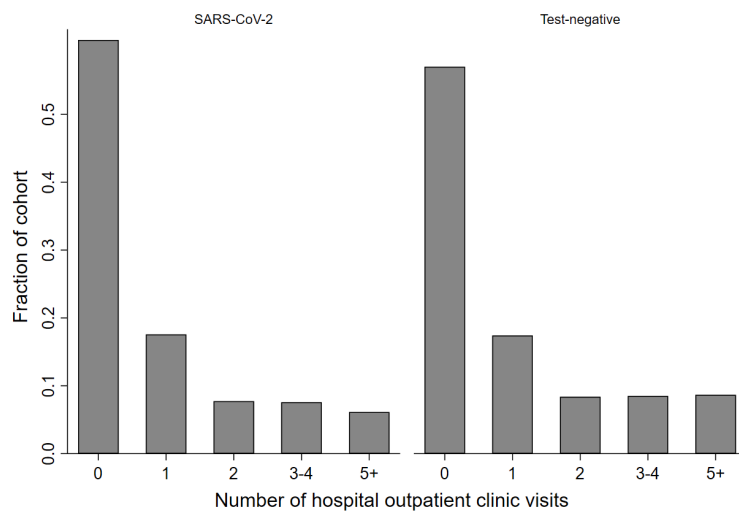
A) General practitioner visits

B) Hospital outpatient clinic visits

A)



B)



**Table S1. List of outcomes, components of outcomes, ICD-10 and ATC codes used to define outcomes**

<b>Outcome</b>	<b>Components</b>	<b>Coding system</b>	<b>Codes</b>
<b>Delayed acute complications</b>			
Myocarditis	-	ICD-10	I40, I41, I541
Venous thromboembolism	Pulmonary embolism, deep vein thrombosis	ICD-10	I26, I801, I802, I803, I808, I809, I822, I823, I829
Arterial embolism and thrombosis	-	ICD-10	I739, I74, I779
Ischaemic stroke or TIA	-	ICD-10	I63, I64, G45
Cerebral haemorrhage	-	ICD-10	I60-I62
Guillain-Barré syndrome	-	ICD-10	G610
Encephalitis	-	ICD-10	G04, G05
Psychosis	-	ICD-10	F20-F29 excl. F21, F30
Kawasaki disease	-	ICD-10	M303
PIMS-related diagnoses	-	ICD-10	M303, A483, I40, I41
Acute kidney injury	Defined using creatinine measurements according to KDIGO guidelines	ICD-10	-
<b>Chronic disease</b>			
Pulmonary disease	Asthma, chronic obstructive pulmonary disease, bronchiectasis, other chronic lower respiratory diseases, interstitial lung diseases, lung absces, lung empyema, pneumothorax, pleural effusion	ICD-10	J40-J47, J80-J99
Interstitial pulmonary fibrosis	-	ICD-10	J841
Cardiovascular disease	Ischaemic heart disease, pulmonary embolism, pericarditis, myocarditis, supraventricular tachycardias, heart failure, ischaemic stroke	ICD-10	I20-I25, I26, I30-I32, I40-I43, I47-150, I63, I64
Heart failure	-	ICD-10	I50
Diabetes mellitus	Type 1 diabetes, type 2 diabetes	ICD-10	E10-E14
Neurological disease	Encephalitis, myelitis, encephalomyelitis, epilepsy, migraine, other headache syndromes, neuropathies	ICD-10	G04, G05, G40, G43, G44, G45, G50-G59, G60-G64



Neuropathies	-	ICD-10	G50-59, G60-G64
Psychiatric illness	Psychoses, affective disorders, neurotic- and stress disorders	ICD-10	F20-F29, F30-F39, F40-F48
Depression	-	ICD-10	F32
Anxiety disorders	-	ICD-10	F41 F43
<b>Persisting symptoms (hospital diagnoses)</b>			
Dyspnoea	-	ICD-10	R060
Cough	-	ICD-10	R05
Anosmia	-	ICD-10	R430
Headache	-	ICD-10	R51, G43, G44
Fatigue related disorders	-	ICD-10	R53, G933
Nonspecific pain	-	ICD-10	R52
<b>Prescription drug use</b>			
Bronchodilating agents	Inhaled short- and long-acting beta-2 agonists, short- and long-acting muscarinic receptor antagonists		R03AC02-04, R03AC12-13, R03AC18-19, R03AK06-08, R03AK10-11, R03AL01-09, R03CC02, R03BB01, R03BB04-07
		ATC	
SABA	-	ATC	R03AC02-04, R03AL01-02, R03CC02
ICS	-	ATC	R03BA, R0AK, R03AL08, R03AL09
Cough preparations	Oral codeine and dextromethorphan	ATC	R05DA04, R05DA09
Paracetamol	-	ATC	N02BE01
NSAIDs	-	ATC	M01A excl. M01AX
Opioids and opioid-like drugs	-	ATC	N02A
Triptans	-	ATC	N02CC
Glucose lowering drugs	Oral antidiabetic drugs and insulin	ATC	A10
Antidepressants	-	ATC	N06A

Benzodiazapines and Z-drugs	Benzodiazepines and non-benzodiazepine benzodiazepine receptor agonists	ATC	N05BA, N05CF
Antipsychotics	First and second generation antipsychotics	ATC	N05A
Platelet inhibitors	Aspirin, clopidogrel, prasugrel, ticagrelor, dipyridamol	ATC	B01AC06, B01AC07, B01AC22, B01AC24, B01AC30, N02BA01, B01AC04
Anticoagulants	Direct-acting oral anticoagulants, vitamin-K antagonists	ATC	B01AA03, B01AA04, B01AF01-B01AF03, B01AE07

ICD-10 = International Statistical Classification of Diseases and Health Related Problems 10th revision

ATC = Anatomical Therapeutical Chemical Classification

**Table S2. ICD-10 and ATC codes used to define baseline covariates included in the propensity score model**

<b>Covariate</b>	<b>Coding system</b>	<b>Codes</b>
<b>Medical conditions</b>		
Pulmonary disease	ICD-10	J40-J47, J80-J99
Cardiovascular disease	ICD-10	I20-I25, I26, I30-I32, I40-I43, I47-I50, I63, I64
Chronic kidney disease	ICD-10	N00, N01, N03-N06, N08.8, N14.1, N14.2, N16.8, N17, N25.1, N26, N27
Markers of smoking	ICD-10	J41-J44, F17, Z71.6, Z72.0
Alcohol related disorders	ICD-10	F10, E24.4, G31.2, G62.1, G72.1, I42.6, K29.2, K70, K85.2, K86.0, Q86.0, Z50.2, Z71.4, Z72.1
Dementia	ICD-10	F01-F04
Obesity	ICD-10	E66
Cancer	ICD-10	C00-C97, excluding C44
<b>Prescription drug use</b>		
Opioids and opioid-like drugs	ATC	N02A
Glucose lowering drugs	ATC	A10
Antipsychotics	ATC ATC	N05A
Platelet inhibitors	ATC	B01AC06, B01AC07, B01AC22, B01AC24, B01AC30, N02BA01, B01AC04
VKA and DOACs		B01AA03, B01AA04, B01AF01-B01AF03, B01AE07
Antihypertensives	ATC	C08, C03A, C07, C09
Antidiabetic drugs	ATC	A10
Loop diuretics	ATC	C03CA, C03CB
Lipid lowering drugs*	ATC	C10AA, C10AB

ICD-10 = International Statistical Classification of Diseases and Health Related Problems 10th revision

ATC = Anatomical Therapeutical Chemical Classification

\* = Not included in the propensity score model

**Table S3. Number of events, risks, risk differences and risk ratios for the initiation of drug groups potentially representing post-acute effects of SARS-CoV-2 infection during the period 2 weeks to 6 months after a SARS-CoV-2 test.**

Drug group	Non-hospitalised SARS-CoV-2	Test-negative	Unweighted		PS weighted	
	Risk: n/N (%)	Risk: n/N (%)	RD: % (95% CI)	RR (95% CI)	RD: % (95% CI)	RR (95% CI)
Bronchodilating agents	121/6782 (1.78)	814/55482 (1.47)	0.32 (-0.01 to 0.65)	1.22 (1.01 to 1.47)	0.33 (-0.00 to 0.66)	1.23 (1.01 to 1.48)
SABA	117/6935 (1.69)	743/57206 (1.30)	0.39 (0.07 to 0.71)	1.30 (1.07 to 1.58)	0.41 (0.09 to 0.73)	1.32 (1.09 to 1.60)
ICS	57/7696 (0.74)	733/64870 (1.13)	-0.39 (-0.60 to -0.18)	0.66 (0.50 to 0.86)	-0.39 (-0.60 to -0.18)	0.65 (0.50 to 0.86)
Cough preparations	28/7456 (0.38)	262/64857 (0.40)	-0.03 (-0.18 to 0.12)	0.93 (0.63 to 1.37)	0.00 (-0.14 to 0.15)	1.01 (0.68 to 1.49)
Paracetamol	153/4781 (3.20)	1422/39052 (3.64)	-0.44 (-0.97 to 0.09)	0.88 (0.75 to 1.04)	-0.37 (-0.90 to 0.17)	0.90 (0.76 to 1.06)
NSAIDs	83/3234 (2.57)	745/24688 (3.02)	-0.45 (-1.04 to 0.13)	0.85 (0.68 to 1.06)	-0.44 (-1.03 to 0.15)	0.85 (0.68 to 1.07)
Opioids and opioid-like drugs	72/6316 (1.14)	721/51042 (1.41)	-0.27 (-0.55 to 0.01)	0.81 (0.63 to 1.03)	-0.26 (-0.54 to 0.02)	0.81 (0.64 to 1.04)
Triptans	33/8292 (0.40)	198/72828 (0.27)	0.13 (-0.01 to 0.27)	1.46 (1.01 to 2.11)	0.14 (0.00 to 0.28)	1.55 (1.07 to 2.25)
Glucose lowering drugs	23/8457 (0.27)	254/75984 (0.33)	-0.06 (-0.18 to 0.06)	0.81 (0.53 to 1.25)	-0.01 (-0.13 to 0.10)	0.95 (0.62 to 1.46)
Antidepressants Benzodiazapines and Z- drugs	47/7324 (0.64)	478/58620 (0.82)	-0.17 (-0.37 to 0.02)	0.79 (0.58 to 1.06)	-0.12 (-0.32 to 0.07)	0.84 (0.62 to 1.13)
42/7364 (0.57)	368/61354 (0.60)	-0.03 (-0.21 to 0.15)	0.95 (0.69 to 1.31)	0.01 (-0.17 to 0.20)	1.03 (0.75 to 1.41)	
Antipsychotics	24/8527 (0.28)	271/74255 (0.36)	-0.08 (-0.20 to 0.04)	0.77 (0.51 to 1.17)	-0.02 (-0.14 to 0.10)	0.93 (0.61 to 1.42)
Platelet inhibitors	28/8229 (0.34)	284/72700 (0.39)	-0.05 (-0.18 to 0.08)	0.87 (0.59 to 1.28)	-0.04 (-0.18 to 0.09)	0.88 (0.60 to 1.30)
Anticoagulants	23/8659 (0.27)	209/77469 (0.27)	-0.00 (-0.12 to 0.11)	0.98 (0.64 to 1.51)	0.01 (-0.11 to 0.12)	1.03 (0.67 to 1.59)
Antihypertensives	58/6856 (0.85)	525/59086 (0.89)	-0.04 (-0.27 to 0.19)	0.95 (0.73 to 1.25)	-0.03 (-0.26 to 0.20)	0.97 (0.74 to 1.27)

RD = Risk difference, RR = Risk ratio, SABA = Short-acting beta-2 agonists, ICS = inhaled corticosteroids, NSAIDs = Non-steroidal anti-inflammatory drugs, PS = Propensity score, CI = Confidence interval

**Table S4. Number of events, risks, risk differences and risk ratios for hospital diagnoses potentially representing post-acute effects of SARS-CoV-2 infection during the period 2 weeks to 6 months after a SARS-CoV-2 test.**

Diagnosis	Non-hospitalised	Test-negative	Unweighted		PS weighted	
	SARS-CoV-2 Risk: n/N (%)		Risk: n/N (%)	RD: % (95% CI)	RR (95% CI)	RD: % (95% CI)
<b>Delayed acute complications</b>						
Myocarditis	0/NR (0)	n < 5	-	-	-	-
Heart failure	5/8908 (0.06)	86/79893 (0.1)	-0.05 (-0.11 to 0.00)	0.52 (0.21 to 1.28)	-0.04 (-0.10 to 0.01)	0.58 (0.23 to 1.43)
Venous thromboembolism	20/8785 (0.2)	110/78872 (0.1)	0.09 (-0.01 to 0.19)	1.63 (1.01 to 2.63)	0.10 (-0.00 to 0.20)	1.77 (1.09 to 2.86)
Peripheral vascular disease	n < 5	22/80232 (0.03)	NR	NR	NR	NR
Ischaemic stroke or TIA	12/8748 (0.1)	117/78411 (0.2)	-0.01 (-0.09 to 0.07)	0.92 (0.51 to 1.66)	0.00 (-0.08 to 0.08)	1.00 (0.55 to 1.82)
Cerebral haemorrhage	0/8947 (0)	22/80462 (0.03)	-	-	-	-
Guillain-Barré syndrome	0/8976 (0)	n < 5	-	-	-	-
Encephalitis	0/8975 (0)	n < 5	-	-	-	-
Psychosis	n < 5	43/80244 (0.05)	NR	NR	NR	NR
Kawasaki disease	0/NR (0)	0/80882 (0)	-	-	-	-
PIMS	0/8976 (0)	n < 5	-	-	-	-
Acute kidney injury	58/8983 (0.7)	492/80894 (0.6)	0.04 (-0.14 to 0.21)	1.06 (0.81 to 1.39)	0.08 (-0.10 to 0.25)	1.13 (0.86 to 1.48)
<b>Chronic disease</b>						
Pulmonary disease	22/8195 (0.3)	441/70721 (0.6)	-0.36 (-0.48 to -0.23)	0.43 (0.28 to 0.66)	-0.33 (-0.46 to -0.20)	0.45 (0.29 to 0.69)
Interstitial pulmonary fibrosis	0/8977 (0)	11/80800 (0.01)	-	-	-	-
Cardiovascular disease	32/8146 (0.4)	328/71774 (0.5)	-0.06 (-0.21 to 0.08)	0.86 (0.60 to 1.23)	-0.04 (-0.18 to 0.11)	0.91 (0.63 to 1.31)
Diabetes mellitus	9/8691 (0.1)	81/77928 (0.1)	-0.00 (-0.07 to 0.07)	1.00 (0.50 to 1.98)	0.01 (-0.07 to 0.08)	1.06 (0.53 to 2.13)
Neurological disease	33/8028 (0.4)	343/69664 (0.5)	-0.08 (-0.23 to 0.07)	0.83 (0.58 to 1.19)	-0.05 (-0.19 to 0.10)	0.90 (0.63 to 1.29)
Neuropathies	11/8537 (0.1)	188/75365 (0.3)	-0.12 (-0.20 to -0.04)	0.52 (0.28 to 0.95)	-0.11 (-0.19 to -0.02)	0.55 (0.30 to 1.01)
Psychiatric illness	27/8586 (0.3)	429/74641 (0.6)	-0.26 (-0.39 to -0.13)	0.55 (0.37 to 0.81)	-0.19 (-0.32 to -0.07)	0.62 (0.42 to 0.91)
Depression	9/8884 (0.1)	107/79616 (0.1)	-0.03 (-0.10 to 0.04)	0.75 (0.38 to 1.49)	-0.01 (-0.08 to 0.06)	0.91 (0.46 to 1.80)
Anxiety disorders	15/8786 (0.2)	293/77654 (0.4)	-0.21 (-0.30 to -0.11)	0.45 (0.27 to 0.76)	-0.15 (-0.24 to -0.05)	0.54 (0.32 to 0.90)
<b>Persisting symptoms</b>						
Dyspnoea	103/8676 (1.2)	499/76728 (0.7)	0.54 (0.30 to 0.77)	1.83 (1.48 to 2.25)	0.59 (0.36 to 0.83)	2.00 (1.62 to 2.48)
Cough	17/8677 (0.2)	300/77596 (0.4)	-0.19 (-0.29 to -0.09)	0.51 (0.31 to 0.83)	-0.19 (-0.30 to -0.09)	0.50 (0.31 to 0.82)
Anosmia	n < 5	0/80865 (0)	-	-	-	-
Headache	33/8400 (0.4)	299/73799 (0.4)	-0.01 (-0.15 to 0.13)	0.97 (0.68 to 1.39)	0.04 (-0.10 to 0.18)	1.10 (0.77 to 1.58)
Fatigue related disorders	18/8809 (0.2)	175/78543 (0.2)	-0.02 (-0.12 to 0.08)	0.92 (0.56 to 1.49)	-0.01 (-0.11 to 0.09)	0.97 (0.60 to 1.59)
Nonspecific pain	24/8438 (0.3)	301/74235 (0.4)	-0.12 (-0.24 to 0.00)	0.70 (0.46 to 1.06)	-0.06 (-0.19 to 0.06)	0.82 (0.54 to 1.24)

RD = Risk difference, RR = Risk ratio, CI = Confidence interval, PS = Propensity score, TIA = transitory ischaemic attack, PIMS = Diagnoses related to paediatric inflammatory multisystemic syndrome, n < 5 = counts less than 5 cannot be reported due to Danish legislation, NR = not reported due to Danish Data protection laws

**Table S5. Rates of health care utilisation 6 months to 2 weeks before and 2 weeks to 6 months after a SARS-CoV-2 test.**

Rates are reported as the number of events per 1000 individuals during the baseline and follow up period.

Outcome	Baseline period			Follow up			Rate ratio	PERR (95% CI)
	Non-hospitalised SARS-CoV-2, events (n/1000 individuals)	Test-negative, events (n/1000 individuals)	Rate ratio	Non-hospitalised SARS-CoV-2, events (n/1000 individuals)	Test-negative, events (n/1000 individuals)	Rate ratio		
<b>All</b>								
GP	11025/8983 (1227)	130202/80894 (1610)	0.76	14707/8983 (1637)	146657/80894 (1813)	0.90	1.18 (1.15 to 1.22)	
Outpatient Emergency department	8411/8983 (936)	113974/80894 (1409)	0.66	9851/8983 (1097)	121185/80894 (1498)	0.73	1.10 (1.05 to 1.16)	
Hospitalisation	220/8983 (24)	2044/80894 (25)	0.97	296/8983 (33)	2561/80894 (32)	1.04	1.07 (0.88 to 1.30)	
	463/8983 (52)	6576/80894 (81)	0.63	547/8983 (61)	7791/80894 (96)	0.63	1.00 (0.87 to 1.14)	
<b>Age 0-17</b>								
GP	515/584 (882)	6287/5662 (1110)	0.79	619/584 (1060)	7165/5662 (1265)	0.84	1.05 (0.93 to 1.20)	
Outpatient Emergency department	313/584 (536)	4124/5662 (728)	0.74	338/584 (579)	4208/5662 (743)	0.78	1.06 (0.86 to 1.31)	
Hospitalisation	14/584 (24)	180/5662 (32)	0.75	12/584 (21)	147/5662 (26)	0.79	1.05 (0.42 to 2.61)	
	9/584 (15)	245/5662 (43)	0.36	15/584 (26)	199/5662 (35)	0.73	2.05 (0.69 to 6.11)	
<b>Age 18-34</b>								
GP	2927/2436 (1202)	34337/22045 (1558)	0.77	3740/2436 (1535)	39493/22045 (1791)	0.86	1.11 (1.05 to 1.18)	
Outpatient Emergency department	2146/2436 (881)	26541/22045 (1204)	0.73	2744/2436 (1126)	28825/22045 (1308)	0.86	1.18 (1.07 to 1.29)	
Hospitalisation	71/2436 (29)	555/22045 (25)	1.16	76/2436 (31)	691/22045 (31)	1.00	0.86 (0.59 to 1.26)	
	90/2436 (37)	1306/22045 (59)	0.62	131/2436 (54)	1762/22045 (80)	0.67	1.08 (0.80 to 1.45)	
<b>Age 35-54</b>								
GP	4077/3481 (1171)	47651/31004 (1537)	0.76	5861/3481 (1684)	54712/31004 (1765)	0.95	1.25 (1.20 to 1.31)	
Outpatient Emergency department	2714/3481 (780)	39436/31004 (1272)	0.61	3472/3481 (997)	41061/31004 (1324)	0.75	1.23 (1.12 to 1.34)	
Hospitalisation	76/3481 (22)	725/31004 (23)	0.93	119/3481 (34)	932/31004 (30)	1.14	1.22 (0.89 to 1.67)	
	114/3481 (33)	1837/31004 (59)	0.55	137/3481 (39)	2082/31004 (67)	0.59	1.06 (0.78 to 1.44)	
<b>Age 55-74</b>								
GP	2797/2014 (1389)	33417/18259 (1830)	0.76	3532/2014 (1754)	35888/18259 (1965)	0.89	1.18 (1.11 to 1.24)	
Outpatient Emergency department	2635/2014 (1308)	35408/18259 (1939)	0.67	2679/2014 (1330)	38098/18259 (2087)	0.64	0.94 (0.85 to 1.05)	
Hospitalisation	46/2014 (23)	462/18259 (25)	0.90	76/2014 (38)	605/18259 (33)	1.14	1.26 (0.88 to 1.82)	
	125/2014 (62)	2104/18259 (115)	0.54	140/2014 (70)	2448/18259 (134)	0.52	0.96 (0.72 to 1.29)	
<b>Age 75+</b>								
GP	709/468 (1515)	8510/3924 (2169)	0.70	955/468 (2041)	9399/3924 (2395)	0.85	1.22 (1.09 to 1.36)	

Outpatient	603/468 (1288)	8465/3924 (2157)	0·60	618/468 (1321)	8993/3924 (2292)	0·58	0·96 (0·78 to 1·19)
Emergency							
department	13/468 (28)	122/3924 (31)	0·89	13/468 (28)	186/3924 (47)	0·59	0·66 (0·25 to 1·71)
Hospitalisation	125/468 (267)	1084/3924 (276)	0·97	124/468 (265)	1300/3924 (331)	0·80	0·83 (0·60 to 1·13)



**Table S6. Number of reinitiators and risk estimates for drugs suspected to represent delayed complications of SARS-CoV-2 infection during the period 2 weeks to 6 months after a SARS-CoV-2 test.**

Reinitiation is defined as a new prescription for the drug of interest during follow-up among former users (individuals who have not redeemed a prescription for the drug of interest during the previous 12 months)

Drug group	Non-hospitalised	Test-negative	Comparison	
	SARS-CoV-2		Risk: n/N (%)	RD: % (95% CI)
Bronchodilating agents	92/1444 (6.4)	794/14428 (5.5)	0.87 (-0.45 to 2.18)	1.16 (0.94 to 1.43)
SABA	90/1446 (6.2)	859/14863 (5.8)	0.44 (-0.86 to 1.75)	1.08 (0.87 to 1.33)
ICS	40/756 (5.3)	454/8864 (5.1)	0.17 (-1.49 to 1.83)	1.03 (0.75 to 1.41)
Cough preparations	21/1254 (1.7)	184/13006 (1.4)	0.26 (-0.48 to 1.00)	1.18 (0.76 to 1.85)
Paracetamol	253/1945 (13)	2464/19073 (13)	0.09 (-1.48 to 1.66)	1.01 (0.89 to 1.14)
NSAIDs	322/4264 (7.6)	3271/40674 (8.0)	-0.49 (-1.33 to 0.35)	0.94 (0.84 to 1.05)
Opioids and opioid-like drugs	76/2076 (3.7)	1244/22512 (5.5)	-1.87 (-2.73 to -1.00)	0.66 (0.53 to 0.83)
Triptans	20/475 (4.2)	198/5472 (3.6)	0.59 (-1.28 to 2.46)	1.16 (0.74 to 1.83)
Glucose lowering drugs	7/120 (5.8)	70/1230 (5.7)	0.14 (-4.25 to 4.53)	1.03 (0.48 to 2.18)
Antidepressants	29/1025 (2.8)	526/13378 (3.9)	-1.10 (-2.17 to -0.04)	0.72 (0.50 to 1.04)
Benzodiazapines and Z-drugs	40/1257 (3.2)	525/14802 (3.6)	-0.36 (-1.38 to 0.65)	0.90 (0.65 to 1.23)
Antipsychotics	8/288 (2.8)	143/4186 (3.4)	-0.64 (-2.61 to 1.34)	0.81 (0.40 to 1.64)
Platelet inhibitors	9/358 (2.5)	115/3602 (3.2)	-0.68 (-2.40 to 1.04)	0.79 (0.40 to 1.54)
Anticoagulants	n < 5	34/1180 (2.88)		NR
Antihypertensives	35/764 (4.6)	381/7772 (4.9)	-0.32 (-1.88 to 1.24)	0.93 (0.67 to 1.31)

RD = Risk difference, RR = Risk ratio, SABA = Short-acting beta-2 agonists, CI = Confidence interval, ICS = inhaled corticosteroids, NSAIDs = Non-steroidal anti-inflammatory drugs, n < 5 = counts less than 5 cannot be reported due to Danish Data protection laws, NR = not reported due to Danish Data protection laws

**Table S7. Number of readmissions and risk estimates for diagnoses suspected to represent delayed complications of SARS-CoV-2 infection during the period 2 weeks to 6 months after a SARS-CoV-2 test.**

Readmission is defined as a discharge diagnosis during follow-up among individuals with a history of the diagnosis of interest

Diagnosis	Non-hospitalised	Test-negative	Comparison	
	SARS-CoV-2		Risk: n/N (%)	RD: % (95% CI)
<b>Delayed acute complications</b>				
Myocarditis	0/NR (0)	0/52 (0)	-	-
Heart failure	n < 5	95/1001 (9.5)	NR	NR
Venous thromboembolism	7/198 (3.5)	53/2022 (2.6)	0.91 (-1.75 to 3.58)	1.35 (0.62 to 2.93)
Peripheral vascular disease	n < 5	27/662 (4.1)	NR	NR
Ischaemic stroke or TIA	n < 5	54/2483 (2.2)	NR	NR
Cerebral haemorrhage	0/36 (0)	n < 5	-	-
Guillain-Barré syndrome	n < 5	n < 5	NR	NR
Encephalitis	0/8 (0.00)	n < 5	-	-
Psychosis	10/39 (25)	135/650 (21)	4.87 (-9.18 to 18.93)	1.23 (0.71 to 2.15)
Kawasaki disease	0/NR (0)	0/12 (0)	-	-
PIMS	0/7 (0)	0/68 (0)	-	-
<b>Chronic disease</b>				
Pulmonary disease	51/788 (6.5)	878/10173 (8.6)	-2.16 (-3.96 to -0.36)	0.75 (0.57 to 0.99)
Interstitial pulmonary fibrosis	n < 5	14/94 (14.9)	NR	NR
Cardiovascular disease	52/837 (6.2)	686/9120 (7.5)	-1.31 (-3.03 to 0.41)	0.83 (0.63 to 1.09)
Diabetes mellitus	75/292 (26)	648/2966 (22)	3.84 (-1.39 to 9.06)	1.18 (0.96 to 1.45)
Neurological disease	42/955 (4.4)	534/11230 (4.8)	-0.36 (-1.72 to 1.00)	0.92 (0.68 to 1.26)
Neuropathies	13/446 (2.9)	137/5529 (2.5)	0.44 (-1.18 to 2.05)	1.18 (0.67 to 2.06)
Psychiatric illness	39/397 (9.8)	627/6253 (10.0)	-0.20 (-3.22 to 2.82)	0.98 (0.72 to 1.33)
Depression	n < 5	57/1278 (4.5)	NR	NR
Anxiety disorders	14/197 (7.1)	222/3240 (6.9)	0.25 (-3.44 to 3.95)	1.04 (0.62 to 1.75)
<b>Persisting symptoms</b>				
Dyspnoea	7/307 (2.3)	195/4166 (4.7)	-2.40 (-4.19 to -0.61)	0.49 (0.23 to 1.03)
Cough	6/306 (2.0)	83/3298 (2.5)	-0.56 (-2.20 to 1.09)	0.78 (0.34 to 1.77)
Anosmia	0/6 (0)	n < 5	-	-
Headache	18/583 (3.1)	289/7095 (4.1)	-0.99 (-2.46 to 0.49)	0.76 (0.47 to 1.21)
Fatigue related disorders	n < 5	33/2351 (1.4)	NR	NR
Nonspecific pain	12/545 (2.2)	225/6659 (3.4)	-1.18 (-2.48 to 0.13)	0.65 (0.37 to 1.16)

RD = Risk difference, RR = Risk ratio, CI = Confidence interval, PS = Propensity score, TIA = transitory ischaemic attack, PIMS = Diagnoses related to paediatric inflammatory multisystemic syndrome, n < 5 = counts less than 5 cannot be reported due to Danish legislation, NR = not reported due to Danish Data protection laws

**Table S8. Hypothesis-free screening for increased risks of initiating a given drug 2 weeks to 6 months after SARS-CoV-2 infection**

Drugs are ranked according to the risk difference. The 50 highest ranked drugs are reported. Initiation was defined as the first ever prescription for a given drug

Drug	ATC	Non-hospitalised SARS-CoV-2		Comparison	
		Risk: n/N (%)	Test-negative Risk: n/N (%)	RD: % (95% CI)	RR (95% CI)
Salbutamol	R03AC02	112/7945 (1·41)	760/67594 (1·12)	0·29 (0·01 to 0·56)	1·25 (1·03 to 1·53)
Terbutaline	R03AC03	37/7797 (0·47)	213/66779 (0·32)	0·16 (-0·00 to 0·31)	1·49 (1·05 to 2·11)
Ketoconazole	D01AC08	44/7707 (0·57)	315/69071 (0·46)	0·11 (-0·06 to 0·29)	1·25 (0·91 to 1·71)
Miconazole	A01AB09	35/8501 (0·41)	230/75553 (0·30)	0·11 (-0·03 to 0·25)	1·35 (0·95 to 1·93)
Fusidic acid	S01AA13	32/6324 (0·51)	222/54187 (0·41)	0·10 (-0·09 to 0·28)	1·24 (0·85 to 1·79)
Sumatriptan	N02CC01	32/8415 (0·38)	206/74155 (0·28)	0·10 (-0·03 to 0·24)	1·37 (0·94 to 1·99)
Hydroxocobalamin	B03BA03	10/8828 (0·11)	21/79064 (0·03)	0·09 (0·02 to 0·16)	4·26 (2·01 to 9·05)
Progesterone	G03DA04	15/8829 (0·17)	80/79108 (0·10)	0·07 (-0·02 to 0·16)	1·68 (0·97 to 2·91)
Diazepam	N05BA01	11/8676 (0·13)	51/76913 (0·07)	0·06 (-0·02 to 0·14)	1·91 (1·00 to 3·67)
Ganirelix	H01CC01	11/8890 (0·12)	52/79845 (0·07)	0·06 (-0·02 to 0·13)	1·90 (0·99 to 3·64)
Hydrocortisone and antibiotics	D07CA01	15/8595 (0·17)	99/76985 (0·13)	0·05 (-0·05 to 0·14)	1·36 (0·79 to 2·33)
Tobramycin	S01AA12	15/8334 (0·18)	95/73751 (0·13)	0·05 (-0·04 to 0·15)	1·40 (0·81 to 2·41)
Aciclovir	D06BB03	12/8684 (0·14)	67/77579 (0·09)	0·05 (-0·03 to 0·13)	1·60 (0·87 to 2·96)
Follitropin alfa	G03GA05	11/8841 (0·12)	60/79226 (0·08)	0·05 (-0·03 to 0·12)	1·64 (0·86 to 3·12)
Empagliflozin	A10BK03	11/8917 (0·12)	57/80428 (0·07)	0·05 (-0·02 to 0·13)	1·74 (0·91 to 3·32)
Diclofenac	S01BC03	18/8823 (0·20)	127/78767 (0·16)	0·04 (-0·06 to 0·14)	1·27 (0·77 to 2·07)
Isotretinoin	D10BA01	12/8667 (0·14)	74/78519 (0·09)	0·04 (-0·04 to 0·13)	1·47 (0·80 to 2·70)
Docusate sodium, incl· combinations	A06AG10	11/8874 (0·12)	67/79849 (0·08)	0·04 (-0·04 to 0·12)	1·48 (0·78 to 2·79)
Buprenorphine	N02AE01	12/8885 (0·14)	73/79653 (0·09)	0·04 (-0·04 to 0·12)	1·47 (0·80 to 2·71)
Levocabastine	S01GX02	10/8646 (0·12)	60/77347 (0·08)	0·04 (-0·04 to 0·11)	1·49 (0·76 to 2·91)
Imiquimod	D06BB10	7/8916 (0·08)	34/80213 (0·04)	0·04 (-0·02 to 0·10)	1·85 (0·82 to 4·18)
Latanoprost	S01EE01	6/8904 (0·07)	25/80204 (0·03)	0·04 (-0·02 to 0·09)	2·16 (0·89 to 5·27)
Buserelin	L02AE01	5/8912 (0·06)	14/80136 (0·02)	0·04 (-0·01 to 0·09)	3·21 (1·16 to 8·91)
Valaciclovir	J05AB11	20/8716 (0·23)	157/78042 (0·20)	0·03 (-0·08 to 0·13)	1·14 (0·72 to 1·82)
Sildenafil	G04BE03	19/8629 (0·22)	144/77336 (0·19)	0·03 (-0·07 to 0·14)	1·18 (0·73 to 1·91)
Mupirocin	D06AX09	10/8668 (0·12)	67/77138 (0·09)	0·03 (-0·05 to 0·10)	1·33 (0·68 to 2·58)
Laurilsulfate, incl· combinations	A06AG11	10/8901 (0·11)	69/80024 (0·09)	0·03 (-0·05 to 0·10)	1·30 (0·67 to 2·53)
Tadalafil	G04BE08	8/8815 (0·09)	51/79290 (0·06)	0·03 (-0·04 to 0·09)	1·41 (0·67 to 2·97)
Rizatriptan	N02CC04	8/8835 (0·09)	44/79207 (0·06)	0·03 (-0·03 to 0·10)	1·63 (0·77 to 3·46)

Dapagliflozin	A10BK01	7/8952 (0·08)	35/80580 (0·04)	0·03 (-0·02 to 0·09)	1·80 (0·80 to 4·05)
Dexamethasone and antiinfectives	S03CA01	6/8680 (0·07)	28/77582 (0·04)	0·03 (-0·02 to 0·09)	1·92 (0·79 to 4·62)
Benzoyl peroxide	D10AE01	5/8893 (0·06)	23/79957 (0·03)	0·03 (-0·02 to 0·08)	1·95 (0·74 to 5·14)
Amorolfine	D01AE16	5/8875 (0·06)	24/79983 (0·03)	0·03 (-0·02 to 0·08)	1·88 (0·72 to 4·92)
Desloratadine	R06AX27	31/8390 (0·37)	257/74406 (0·35)	0·02 (-0·11 to 0·16)	1·07 (0·74 to 1·55)
Diclofenac	M02AA15	14/8858 (0·16)	112/79485 (0·14)	0·02 (-0·07 to 0·10)	1·12 (0·64 to 1·95)
Adapalene, combinations	D10AD53	13/8717 (0·15)	101/78605 (0·13)	0·02 (-0·06 to 0·11)	1·16 (0·65 to 2·07)
Clotrimazole	G01AF02	12/8529 (0·14)	93/76111 (0·12)	0·02 (-0·06 to 0·10)	1·15 (0·63 to 2·10)
Ramipril	C09AA05	11/8802 (0·12)	84/78091 (0·11)	0·02 (-0·06 to 0·09)	1·16 (0·62 to 2·18)
Fluocinolone acetonide and antiinfectives	S02CA05	10/8894 (0·11)	73/80069 (0·09)	0·02 (-0·05 to 0·09)	1·23 (0·64 to 2·39)
Lymecycline	J01AA04	8/8654 (0·09)	60/77847 (0·08)	0·02 (-0·05 to 0·08)	1·20 (0·57 to 2·51)
Zopiclone	N05CF01	25/8138 (0·31)	213/71017 (0·30)	0·01 (-0·12 to 0·13)	1·02 (0·68 to 1·55)
Levonorgestrel and ethinylestradiol	G03AA07	21/7638 (0·27)	179/67484 (0·27)	0·01 (-0·11 to 0·13)	1·04 (0·66 to 1·63)
Ferrous sulfate	B03AA07	17/8776 (0·19)	146/78706 (0·19)	0·01 (-0·09 to 0·10)	1·04 (0·63 to 1·72)
Apixaban	B01AF02	13/8888 (0·15)	112/80004 (0·14)	0·01 (-0·08 to 0·09)	1·04 (0·59 to 1·85)
Choriogonadotropin alfa	G03GA08	11/8769 (0·13)	90/78404 (0·11)	0·01 (-0·07 to 0·09)	1·09 (0·58 to 2·04)
Clindamycin, combinations	D10AF51	10/8472 (0·12)	83/76236 (0·11)	0·01 (-0·07 to 0·09)	1·08 (0·56 to 2·09)
Methylphenidate	N06BA04	10/8865 (0·11)	83/78725 (0·11)	0·01 (-0·07 to 0·08)	1·07 (0·56 to 2·06)
Pivampicillin	J01CA02	9/8243 (0·11)	68/71633 (0·09)	0·01 (-0·06 to 0·09)	1·15 (0·57 to 2·30)
Pimecrolimus	D11AH02	10/8773 (0·11)	80/78877 (0·10)	0·01 (-0·06 to 0·09)	1·12 (0·58 to 2·17)
Candesartan	C09CA06	8/8866 (0·09)	66/79502 (0·08)	0·01 (-0·06 to 0·07)	1·09 (0·52 to 2·26)
Escitalopram	N06AB10	8/8732 (0·09)	61/77193 (0·08)	0·01 (-0·05 to 0·08)	1·16 (0·56 to 2·42)
Hydroxyzine	N05BB01	7/8896 (0·08)	54/79909 (0·07)	0·01 (-0·05 to 0·07)	1·16 (0·53 to 2·56)
Ketorolac	S01BC05	6/8848 (0·07)	46/79893 (0·06)	0·01 (-0·05 to 0·07)	1·18 (0·50 to 2·76)
Tars	D05AA	5/8935 (0·06)	40/80533 (0·05)	0·01 (-0·05 to 0·06)	1·13 (0·44 to 2·85)
Osmotically acting laxatives	A06AD	6/8899 (0·07)	50/80313 (0·06)	0·01 (-0·05 to 0·06)	1·08 (0·46 to 2·53)
Hydrocortisone	S01BA02	6/8973 (0·07)	44/80722 (0·05)	0·01 (-0·04 to 0·07)	1·23 (0·52 to 2·88)
Adapalene	D10AD03	5/8693 (0·06)	38/78348 (0·05)	0·01 (-0·04 to 0·06)	1·19 (0·47 to 3·01)
Alfuzosin	G04CA01	5/8863 (0·06)	38/79948 (0·05)	0·01 (-0·04 to 0·06)	1·19 (0·47 to 3·01)

RD = Risk difference, RR = Risk ratio, CI = Confidence interval, ATC = Anatomical Therapeutical Classification

**Table S9. Hypothesis-free screening for increased risks of receiving first hospital diagnoses 2 weeks to 6 months after a SARS-CoV-2 test.**  
Diagnoses are ranked according to the risk difference. The 50 highest ranked diagnoses are reported.

Diagnosis	ICD-10	Non-hospitalised SARS-CoV-2	Test-negative	Comparison	
		Risk: n/N (%)	Risk: n/N (%)	RD: % (95% CI)	RR (95% CI)
Viral infection of unspecified site	B34	161/6148 (2.62)	40/77662 (0.05)	2.57 (2.17 to 2.97)	50.84 (36.00 to 71.81)
Other special examinations and investigations of persons without complaint or reported diagnosis	Z01	203/2673 (7.59)	1188/17630 (6.74)	0.86 (-0.21 to 1.93)	1.13 (0.98 to 1.30)
Sequelae of other and unspecified infectious and parasitic diseases	B94	NR	NR	NR	63.03 (28.56 to 139.11)
Abnormalities of breathing	R06	98/8533 (1.15)	509/74841 (0.68)	0.47 (0.23 to 0.70)	1.69 (1.36 to 2.09)
Pain in throat and chest	R07	64/8445 (0.76)	389/74333 (0.52)	0.23 (0.04 to 0.43)	1.45 (1.11 to 1.88)
Need for immunization against other single viral diseases	Z25	18/8875 (0.20)	30/80450 (0.04)	0.17 (0.07 to 0.26)	5.44 (3.03 to 9.75)
Maternal infectious and parasitic diseases classifiable elsewhere but complicating pregnancy, childbirth and the puerperium	O98	14/8961 (0.16)	7/80724 (0.01)	0.15 (0.07 to 0.23)	18.02 (7.27 to 44.63)
Open wound of wrist and hand	S61	34/7060 (0.48)	210/63267 (0.33)	0.15 (-0.02 to 0.32)	1.45 (1.01 to 2.08)
Supervision of normal pregnancy	Z34	47/6591 (0.71)	333/57277 (0.58)	0.13 (-0.08 to 0.34)	1.23 (0.90 to 1.66)
Contact with and exposure to communicable diseases	Z20	18/8344 (0.22)	84/77161 (0.11)	0.11 (0.00 to 0.21)	1.98 (1.19 to 3.30)
Medical observation and evaluation for suspected diseases and conditions	Z03	109/2829 (3.85)	839/22445 (3.74)	0.11 (-0.64 to 0.87)	1.03 (0.85 to 1.25)
Open wound of head	S01	23/7526 (0.31)	150/67735 (0.22)	0.08 (-0.05 to 0.21)	1.38 (0.89 to 2.14)
Cystitis	N30	33/8420 (0.39)	239/75408 (0.32)	0.07 (-0.06 to 0.21)	1.24 (0.86 to 1.78)
Other headache syndromes	G44	16/8820 (0.18)	88/78649 (0.11)	0.07 (-0.02 to 0.16)	1.62 (0.95 to 2.76)
Other abnormal products of conception	O02	13/8626 (0.15)	61/77352 (0.08)	0.07 (-0.01 to 0.16)	1.91 (1.05 to 3.48)
Postpartum care and examination	Z39	29/6834 (0.42)	222/60927 (0.36)	0.06 (-0.10 to 0.22)	1.16 (0.79 to 1.71)
Erysipelas	A46	14/8853 (0.16)	79/79626 (0.10)	0.06 (-0.03 to 0.14)	1.59 (0.90 to 2.81)
Orchitis and epididymitis	N45	7/8927 (0.08)	16/80244 (0.02)	0.06 (-0.00 to 0.12)	3.93 (1.62 to 9.56)
Sexual dysfunction, not caused by organic disorder or disease	F52	6/8961 (0.07)	10/80620 (0.01)	0.05 (0.00 to 0.11)	5.40 (1.96 to 14.85)
Postpartum haemorrhage	O72	39/7923 (0.49)	309/69898 (0.44)	0.05 (-0.11 to 0.21)	1.11 (0.80 to 1.55)
Abnormalities of heart beat	R00	19/8796 (0.22)	130/78636 (0.17)	0.05 (-0.05 to 0.15)	1.31 (0.81 to 2.11)
Pulmonary embolism	I26	10/8914 (0.11)	49/80246 (0.06)	0.05 (-0.02 to 0.12)	1.84 (0.93 to 3.63)
Other venous embolism and thrombosis	I82	7/8948 (0.08)	20/80554 (0.02)	0.05 (-0.01 to 0.11)	3.15 (1.33 to 7.45)
Disturbances of smell and taste	R43	5/8973 (0.06)	7/80837 (0.01)	0.05 (-0.00 to 0.10)	6.43 (2.04 to 20.27)
Care involving use of rehabilitation procedures	Z50	47/8246 (0.57)	386/72521 (0.53)	0.04 (-0.13 to 0.21)	1.07 (0.79 to 1.45)
Single spontaneous delivery	O80	28/7128 (0.39)	222/63200 (0.35)	0.04 (-0.11 to 0.19)	1.12 (0.76 to 1.66)
Perineal laceration during delivery	O70	30/7902 (0.38)	237/69581 (0.34)	0.04 (-0.10 to 0.18)	1.11 (0.76 to 1.63)
Haemorrhoids and perinal venous thrombosis	K64	19/8861 (0.21)	140/79029 (0.18)	0.04 (-0.06 to 0.14)	1.21 (0.75 to 1.95)

Senile cataract	H25	14/8664 (0.16)	97/78100 (0.12)	0.04 (-0.05 to 0.13)	1.30 (0.74 to 2.28)
Rash and other nonspecific skin eruption	R21	10/8932 (0.11)	58/80322 (0.07)	0.04 (-0.03 to 0.11)	1.55 (0.79 to 3.03)
Conjunctivitis	H10	8/8646 (0.09)	41/77974 (0.05)	0.04 (-0.03 to 0.11)	1.76 (0.83 to 3.75)
Other injuries of lower limb, level unspecified	T13	7/8950 (0.08)	29/80523 (0.04)	0.04 (-0.02 to 0.10)	2.17 (0.95 to 4.96)
Ectopic pregnancy	O00	5/8898 (0.06)	9/79949 (0.01)	0.04 (-0.00 to 0.09)	4.99 (1.67 to 14.89)
Special screening examination for other diseases and disorders	Z13	15/8085 (0.19)	112/71873 (0.16)	0.03 (-0.07 to 0.13)	1.19 (0.69 to 2.04)
Superficial injury of forearm	S50	11/8347 (0.13)	74/73550 (0.10)	0.03 (-0.05 to 0.11)	1.31 (0.70 to 2.47)
Superficial injury of hip and thigh	S70	9/8704 (0.10)	59/77837 (0.08)	0.03 (-0.04 to 0.10)	1.36 (0.68 to 2.75)
Other retinal disorders	H35	7/8862 (0.08)	41/79710 (0.05)	0.03 (-0.03 to 0.09)	1.54 (0.69 to 3.42)
Abnormal involuntary movements	R25	7/8934 (0.08)	40/80148 (0.05)	0.03 (-0.03 to 0.09)	1.57 (0.70 to 3.50)
Open wound of forearm	S51	7/8735 (0.08)	39/78494 (0.05)	0.03 (-0.03 to 0.09)	1.61 (0.72 to 3.60)
Follow-up care involving plastic surgery	Z42	8/8895 (0.09)	48/79982 (0.06)	0.03 (-0.03 to 0.09)	1.50 (0.71 to 3.17)
Fracture of skull and facial bones	S02	7/8692 (0.08)	38/77980 (0.05)	0.03 (-0.03 to 0.09)	1.65 (0.74 to 3.70)
Procedures for purposes other than remedying health state	Z41	6/8894 (0.07)	33/79775 (0.04)	0.03 (-0.03 to 0.08)	1.63 (0.68 to 3.89)
Delirium, not induced by alcohol and other psychoactive substances	F05	6/8955 (0.07)	32/80701 (0.04)	0.03 (-0.03 to 0.08)	1.69 (0.71 to 4.04)
Other diseases of digestive system	K92	6/8922 (0.07)	29/79981 (0.04)	0.03 (-0.02 to 0.09)	1.85 (0.77 to 4.47)
Need for immunization against certain single viral diseases	Z24	5/8667 (0.06)	24/79113 (0.03)	0.03 (-0.02 to 0.08)	1.90 (0.73 to 4.98)
Other disorders of brain	G93	5/8970 (0.06)	21/80628 (0.03)	0.03 (-0.02 to 0.08)	2.14 (0.81 to 5.67)
Aortic aneurysm and dissection	I71	5/8964 (0.06)	22/80578 (0.03)	0.03 (-0.02 to 0.08)	2.04 (0.77 to 5.39)
Follow-up examination after treatment for conditions other than malignant neoplasms	Z09	51/7319 (0.70)	413/61280 (0.67)	0.02 (-0.18 to 0.22)	1.03 (0.77 to 1.38)
Dislocation, sprain and strain of joints and ligaments at ankle and foot level	S93	28/7174 (0.39)	229/62335 (0.37)	0.02 (-0.13 to 0.17)	1.06 (0.72 to 1.57)
Other orthopaedic follow-up care	Z47	22/8111 (0.27)	184/73388 (0.25)	0.02 (-0.10 to 0.14)	1.08 (0.70 to 1.68)
Gonarthrosis [arthrosis of knee]	M17	15/8613 (0.17)	120/77061 (0.16)	0.02 (-0.07 to 0.11)	1.12 (0.65 to 1.91)
Other local infections of skin and subcutaneous tissue	L08	8/8750 (0.09)	56/78776 (0.07)	0.02 (-0.05 to 0.09)	1.29 (0.61 to 2.70)
Family history of certain disabilities and chronic diseases leading to disablement	Z82	7/8921 (0.08)	49/80075 (0.06)	0.02 (-0.04 to 0.08)	1.28 (0.58 to 2.83)
Malignant neoplasm of breast	C50	5/8868 (0.06)	33/79823 (0.04)	0.02 (-0.04 to 0.07)	1.36 (0.53 to 3.49)
Other abnormal findings of blood chemistry	R79	5/8947 (0.06)	26/80529 (0.03)	0.02 (-0.03 to 0.07)	1.73 (0.66 to 4.51)
Family history of other specific disorders	Z83	5/8958 (0.06)	29/80535 (0.04)	0.02 (-0.03 to 0.07)	1.55 (0.60 to 4.00)
Diseases of vocal cords and larynx, not elsewhere classified	J38	5/8931 (0.06)	30/80186 (0.04)	0.02 (-0.03 to 0.07)	1.50 (0.58 to 3.86)
Dislocation, sprain and strain of joints and ligaments of knee	S83	16/7944 (0.20)	134/70243 (0.19)	0.01 (-0.09 to 0.11)	1.06 (0.63 to 1.77)
Superficial injury of head	S00	11/7958 (0.14)	90/70814 (0.13)	0.01 (-0.07 to 0.10)	1.09 (0.58 to 2.03)
Synovitis and tenosynovitis	M65	10/8675 (0.12)	84/77385 (0.11)	0.01 (-0.07 to 0.08)	1.06 (0.55 to 2.04)
Cerebral infarction	I63	9/8868 (0.10)	76/79663 (0.10)	0.01 (-0.06 to 0.08)	1.06 (0.53 to 2.12)
Other disorders of breast	N64	9/8804 (0.10)	71/78975 (0.09)	0.01 (-0.06 to 0.08)	1.14 (0.57 to 2.27)

Chronic ischaemic heart disease	I25	7/8805 (0·08)	58/78875 (0·07)	0·01 (-0·06 to 0·07)	1·08 (0·49 to 2·37)
Sequelae of injuries of upper limb	T92	8/8723 (0·09)	67/77924 (0·09)	0·01 (-0·06 to 0·07)	1·07 (0·51 to 2·22)
Unspecified haematuria	R31	8/8703 (0·09)	62/78048 (0·08)	0·01 (-0·05 to 0·08)	1·16 (0·55 to 2·42)
Benign lipomatous neoplasm	D17	8/8804 (0·09)	61/79321 (0·08)	0·01 (-0·05 to 0·08)	1·18 (0·57 to 2·47)
Inguinal hernia	K40	8/8691 (0·09)	62/78354 (0·08)	0·01 (-0·05 to 0·08)	1·16 (0·56 to 2·43)
Cervical disc disorders	M50	6/8839 (0·07)	46/79084 (0·06)	0·01 (-0·05 to 0·07)	1·17 (0·50 to 2·73)
Disturbances of skin sensation	R20	6/8930 (0·07)	46/80124 (0·06)	0·01 (-0·05 to 0·07)	1·17 (0·50 to 2·74)
Dislocation, sprain and strain of joints and ligaments at neck level	S13	6/8587 (0·07)	49/76059 (0·06)	0·01 (-0·05 to 0·06)	1·08 (0·46 to 2·53)
False labour	O47	5/8766 (0·06)	40/78382 (0·05)	0·01 (-0·05 to 0·06)	1·12 (0·44 to 2·83)
Premature rupture of membranes	O42	5/8717 (0·06)	39/78162 (0·05)	0·01 (-0·05 to 0·06)	1·15 (0·45 to 2·92)
Oedema, not elsewhere classified	R60	6/8934 (0·07)	42/80401 (0·05)	0·01 (-0·04 to 0·07)	1·29 (0·55 to 3·02)
Complications following abortion and ectopic and molar pregnancy	O08	5/8867 (0·06)	36/79579 (0·05)	0·01 (-0·04 to 0·06)	1·25 (0·49 to 3·18)

RD = Risk difference, RR = Risk ratio, CI = Confidence interval, ICD-10: International classification of diseases and related health problems 10<sup>th</sup> revision, NR = Not reported due to Danish data protection laws



**Table S10. Baseline characteristics of individuals with non-hospitalised SARS-CoV-2 infection and individuals hospitalised with SARS-CoV-2 infection.**

	<b>Non-hospitalised</b> N = 8,983	<b>Hospitalised</b> N = 1,310
<b>Demographics</b>		
Age, median (IQR)	43 (30-56)	64 (52-76)
Age < 18	584 (6.5)	7 (0.5)
Female sex	5,471 (60.9)	657 (50.2)
<b>Prescription drug use*</b>		
Bronchodilating agents	757 (8.4)	239 (18.2)
ICS	531 (5.9)	152 (11.6)
Paracetamol	2,257 (25.1)	676 (51.6)
NSAIDs	1,485 (16.5)	288 (22.0)
Opioids and opioid-like drugs	591 (6.6)	238 (18.2)
Antidepressants	634 (7.1)	211 (16.1)
Benzodiazapines and Z-drugs	362 (4.0)	173 (13.2)
Antipsychotics	168 (1.9)	60 (4.6)
Platelet inhibitors	396 (4.4)	244 (18.6)
Anticoagulants	214 (2.4)	196 (15.0)
Loop diuretics	171 (1.9)	176 (13.4)
<b>Lifestyle related diagnoses</b>		
Obesity	682 (7.6)	160 (12.2)
Markers of smoking	246 (2.7)	135 (10.3)
Alcohol related disorders	184 (2.0)	49 (3.7)
<b>Mental health</b>		
Depression	99 (1.1)	38 (2.9)
Anxiety disorders	197 (2.2)	48 (3.7)
Psychosis	39 (0.4)	6 (0.5)
<b>Frailty-related diagnoses</b>		
Cancer	398 (4.4)	168 (12.8)
Dementia	69 (0.8)	29 (2.2)
<b>Chronic conditions</b>		
Diabetes mellitus†	526 (5.9)	231 (17.6)
Hypertension†	2,127 (23.7)	753 (57.5)
Cardiovascular diseases	837 (9.3)	427 (32.6)
Peripheral vascular disease	44 (0.5)	22 (1.7)
Pulmonary disease	788 (8.8)	318 (24.3)
Kidney disease**	49 (0.5)	44 (3.4)

\* = Defined as having redeemed a prescription during the year prior to start of follow up

† = Defined as having redeemed a prescription for a drug used to treat this condition

\*\* = Defined as having received a kidney disease related hospital diagnosis

IQR = interquartile range, SMD = standardized mean difference, SABA = Short-acting beta-2 agonists, ICS = inhaled corticosteroids, NSAIDs = Non-steroidal anti-inflammatory drugs, NA = Not applicable as counts less than 5 cannot be reported due to Danish legislation

**Table S11. Number of initiators and risks for drugs suspected to represent delayed complications of SARS-CoV-2 infection during the period 2 weeks to 6 months after a positive SARS-CoV-2 test.**

Community-managed individuals compared to hospitalised individuals with SARS-CoV-2 infection. Initiation was defined as the first ever prescription for a given drug

<b>Drug group</b>	<b>Non-hospitalised Risk: n/N (%)</b>	<b>Hospitalised Risk: n/N (%)</b>	<b>RD: % (95% CI)</b>	<b>RR (95% CI)</b>
Bronchodilating agents	121/6782 (1.78)	26/861 (3.02)	-1.24 (-2.42 to -0.05)	0.59 (0.39 to 0.90)
SABA	117/6935 (1.69)	24/911 (2.63)	-0.95 (-2.03 to 0.14)	0.64 (0.42 to 0.99)
ICS	57/7696 (0.74)	20/1029 (1.94)	-1.20 (-2.07 to -0.34)	0.38 (0.23 to 0.63)
Cough preparations	28/7456 (0.38)	10/943 (1.06)	-0.68 (-1.35 to -0.02)	0.35 (0.17 to 0.73)
Paracetamol	153/4781 (3.20)	22/353 (6.23)	-3.03 (-5.60 to -0.46)	0.51 (0.33 to 0.79)
NSAIDs	83/3234 (2.57)	5/269 (1.86)	0.71 (-1.00 to 2.41)	1.38 (0.56 to 3.38)
Opioids and opioid-like drugs	72/6316 (1.14)	17/615 (2.76)	-1.62 (-2.95 to -0.30)	0.41 (0.24 to 0.70)
Triptans	33/8292 (0.40)	n < 5	NR	NR
Glucose lowering drugs	23/8457 (0.27)	15/1079 (1.39)	-1.12 (-1.83 to -0.41)	0.20 (0.10 to 0.37)
Antidepressants	47/7324 (0.64)	12/887 (1.35)	-0.71 (-1.49 to 0.07)	0.47 (0.25 to 0.89)
Benzodiazapines and Z-drugs	42/7364 (0.57)	16/844 (1.90)	-1.33 (-2.26 to -0.39)	0.30 (0.17 to 0.53)
Antipsychotics	24/8527 (0.28)	14/1187 (1.18)	-0.90 (-1.52 to -0.27)	0.24 (0.12 to 0.46)
Platelet inhibitors	28/8229 (0.34)	10/890 (1.12)	-0.78 (-1.49 to -0.08)	0.30 (0.15 to 0.62)
Anticoagulants	23/8659 (0.27)	10/1063 (0.94)	-0.68 (-1.27 to -0.08)	0.28 (0.13 to 0.59)
Antihypertensives	58/6856 (0.85)	10/557 (1.80)	-0.95 (-2.07 to 0.17)	0.47 (0.24 to 0.92)

RD = Risk difference, RR = Risk ratio, SABA = Short-acting beta-2 agonists, ICS = inhaled corticosteroids, NSAIDs = Non-steroidal anti-inflammatory drugs, PS = Propensity score, CI = Confidence interval

**Table S12. Number of first-ever diagnoses and risks for diagnoses suspected to represent delayed complications of SARS-CoV-2 infection during the period 2 weeks to 6 months after a SARS-CoV-2 test.**

Community-managed individuals compared to hospitalised individuals with SARS-CoV-2 infection.

Diagnosis	Non-hospitalised SARS-CoV-2	Hospitalised SARS-CoV-2	Comparison	
	Risk: n/N (%)	Risk: n/N (%)	RD: % (95% CI)	RR (95% CI)
<b>Delayed acute complications</b>				
Myocarditis	0/NR (0)	0/NR (0)	-	-
Heart failure	5/8908 (0.06)	n < 5	NR	NR
Venous thromboembolism	20/8785 (0.2)	11/1190 (0.9)	-0.70 (-1.25 to -0.14)	0.25 (0.12 to 0.51)
Peripheral vascular disease	n < 5	0/1288 (0)	-	-
Ischaemic stroke or TIA	12/8748 (0.1)	10/1175 (0.9)	-0.71 (-1.24 to -0.18)	0.16 (0.07 to 0.37)
Cerebral haemorrhage	0/8947 (0)	n < 5	-	-
Guillain-Barré syndrome	0/8976 (0)	0/NR (0)	-	-
Encephalitis	0/8975 (0)	0/NR (0)	-	-
Psychosis	n < 5	n < 5	NR	NR
Kawasaki disease	0/NR (0)	0/1310 (0)	-	-
PIMS	0/8976 (0)	0/NR (0)	-	-
<b>Chronic disease</b>				
Pulmonary disease	22/8195 (0.3)	28/992 (2.8)	-2.55 (-3.59 to -1.52)	0.10 (0.05 to 0.17)
Interstitial pulmonary fibrosis	0/8977 (0)	n < 5	-	-
Cardiovascular disease	32/8146 (0.4)	23/883 (2.6)	-2.21 (-3.27 to -1.15)	0.15 (0.09 to 0.26)
Diabetes mellitus	9/8691 (0.1)	n < 5	NR	NR
Neurological disease	33/8028 (0.4)	19/1058 (1.8)	-1.38 (-2.20 to -0.57)	0.23 (0.13 to 0.40)
Neuropathies	11/8537 (0.1)	12/1182 (1.0)	-0.89 (-1.46 to -0.31)	0.13 (0.06 to 0.29)
Psychiatric illness	27/8586 (0.3)	6/1202 (0.5)	-0.18 (-0.60 to 0.23)	0.63 (0.26 to 1.52)
Depression	9/8884 (0.1)	0/1272 (0)	-	-
Anxiety disorders	15/8786 (0.2)	n < 5	NR	NR
<b>Persisting symptoms</b>				
Dyspnoea	103/8676 (1.2)	37/1140 (3.3)	-2.06 (-3.11 to -1.00)	0.37 (0.25 to 0.53)
Cough	17/8677 (0.2)	n < 5	NR	NR
Anosmia	n < 5	n < 5	NR	NR
Headache	33/8400 (0.4)	5/1177 (0.4)	-0.03 (-0.43 to 0.36)	0.92 (0.36 to 2.36)
Fatigue related disorders	18/8809 (0.2)	15/1251 (1.2)	-0.99 (-1.61 to -0.38)	0.17 (0.09 to 0.34)
Nonspecific pain	24/8438 (0.3)	7/1181 (0.6)	-0.31 (-0.76 to 0.14)	0.48 (0.21 to 1.11)

RD = Risk difference, RR = Risk ratio, CI = Confidence interval, PS = Propensity score, TIA = transitory ischaemic attack, PIMS = Diagnoses related to paediatric inflammatory multisystemic syndrome, n < 5 = counts less than 5 cannot be reported due to Danish legislation, NR = not reported due to Danish data protection laws

**Table S13. Number of events, risks, risk differences and risk ratios for the initiation of drug groups potentially representing post-acute effects of SARS-CoV-2 infection during the period 2 weeks to 14 weeks after a SARS-CoV-2 test.**

Drug group	Non-hospitalised	Test-negative	Unweighted		PS weighted	
	SARS-CoV-2 Risk: n/N (%)		Risk: n/N (%)	RD: % (95% CI)	RR (95% CI)	RD: % (95% CI)
Bronchodilating agents	80/6782 (1.2)	621/55482 (1.1)	0.06 (-0.21 to 0.33)	1.05 (0.84 to 1.33)	0.05 (-0.22 to 0.32)	1.04 (0.83 to 1.32)
SABA	79/6935 (1.1)	576/57206 (1.0)	0.13 (-0.13 to 0.40)	1.13 (0.90 to 1.43)	0.12 (-0.14 to 0.39)	1.12 (0.88 to 1.42)
ICS	33/7696 (0.4)	534/64870 (0.8)	-0.39 (-0.56 to -0.23)	0.52 (0.37 to 0.74)	-0.41 (-0.57 to -0.24)	0.51 (0.36 to 0.73)
Cough preparations	18/7456 (0.2)	169/64857 (0.3)	-0.02 (-0.14 to 0.10)	0.93 (0.57 to 1.51)	-0.01 (-0.13 to 0.11)	0.97 (0.60 to 1.59)
Paracetamol	80/4781 (1.7)	803/39052 (2.1)	-0.38 (-0.77 to 0.01)	0.81 (0.65 to 1.02)	-0.37 (-0.76 to 0.02)	0.82 (0.65 to 1.03)
NSAIDs	38/3234 (1.2)	397/24688 (1.6)	-0.43 (-0.84 to -0.03)	0.73 (0.52 to 1.02)	-0.44 (-0.84 to -0.03)	0.73 (0.52 to 1.02)
Opioids and opioid-like drugs	37/6316 (0.6)	407/51042 (0.8)	-0.21 (-0.41 to -0.01)	0.73 (0.53 to 1.03)	-0.21 (-0.42 to -0.01)	0.74 (0.53 to 1.03)
Triptans	12/8292 (0.1)	104/72828 (0.1)	0.00 (-0.08 to 0.09)	1.01 (0.56 to 1.84)	0.01 (-0.08 to 0.09)	1.06 (0.58 to 1.93)
Glucose lowering drugs	14/8457 (0.2)	128/75984 (0.2)	-0.00 (-0.09 to 0.09)	0.98 (0.57 to 1.71)	0.02 (-0.07 to 0.11)	1.12 (0.64 to 1.96)
Antidepressants	27/7324 (0.4)	256/58620 (0.4)	-0.07 (-0.22 to 0.08)	0.84 (0.57 to 1.25)	-0.04 (-0.19 to 0.11)	0.90 (0.60 to 1.34)
Benzodiazapines and Z-drugs	22/7364 (0.3)	206/61354 (0.3)	-0.04 (-0.17 to 0.10)	0.89 (0.57 to 1.38)	-0.01 (-0.15 to 0.12)	0.95 (0.61 to 1.48)
Antipsychotics	16/8527 (0.2)	148/74255 (0.2)	-0.01 (-0.11 to 0.09)	0.94 (0.56 to 1.58)	0.03 (-0.07 to 0.12)	1.16 (0.69 to 1.96)
Platelet inhibitors	11/8229 (0.1)	160/72700 (0.2)	-0.09 (-0.17 to -0.00)	0.61 (0.33 to 1.12)	-0.08 (-0.17 to 0.01)	0.63 (0.34 to 1.16)
Anticoagulants	16/8659 (0.2)	115/77469 (0.2)	0.04 (-0.06 to 0.13)	1.24 (0.74 to 2.10)	0.03 (-0.06 to 0.13)	1.21 (0.72 to 2.05)
Antihypertensives	31/6856 (0.5)	300/59086 (0.5)	-0.06 (-0.22 to 0.11)	0.89 (0.62 to 1.29)	-0.05 (-0.22 to 0.12)	0.90 (0.62 to 1.31)

RD = Risk difference, RR = Risk ratio, SABA = Short-acting beta-2 agonists, ICS = inhaled corticosteroids, NSAIDs = Non-steroidal anti-inflammatory drugs, PS = Propensity score, CI = Confidence interval

**Table S14. Number of events, risks, risk differences and risk ratios for hospital diagnoses potentially representing post-acute effects of SARS-CoV-2 infection during the period 2 weeks to 14 weeks after a SARS-CoV-2 test.**

Diagnosis	Non-hospitalised	Test-negative	Unweighted		PS weighted	
	Risk: n/N (%)	Risk: n/N (%)	RD: % (95% CI)	RR (95% CI)	RD: % (95% CI)	RR (95% CI)
<b>Delayed acute complications</b>						
Myocarditis	0/NR (0)	0/80842 (0)	-	-	-	-
Heart failure	n < 5	50/79893 (0.06)	NR	NR	NR	NR
Venous thromboembolism	14/8785 (0.16)	68/78872 (0.09)	0.07 (-0.01 to 0.16)	1.85 (1.04 to 3.28)	0.07 (-0.01 to 0.16)	1.82 (1.02 to 3.25)
Peripheral vascular disease	n < 5	7/80232 (0.01)	NR	NR	NR	NR
Ischaemic stroke or TIA	NR	79/78411 (0.10)	NR	NR	NR	NR
Cerebral haemorrhage	0/8947 (0.00)	10/80462 (0.01)	.	.	.	.
Guillain-Barré syndrome	0/8976 (0)	0/80853 (0)	-	-	-	-
Encephalitis	0/8975 (0)	n < 5	-	-	-	-
Psychosis	0/8944 (0)	23/80244 (0.03)	-	-	-	-
Kawasaki disease	0/NR (0)	0/80882 (0)	-	-	-	-
PIMS	0/8976 (0)	0/80826 (0)	-	-	-	-
Acute kidney injury	35/8983 (0.39)	299/80894 (0.37)	0.02 (-0.12 to 0.16)	1.05 (0.74 to 1.50)	0.03 (-0.10 to 0.17)	1.08 (0.76 to 1.54)
<b>Chronic disease</b>						
Pulmonary disease	11/8195 (0.13)	258/70721 (0.36)	-0.23 (-0.32 to -0.14)	0.37 (0.20 to 0.67)	-0.22 (-0.31 to -0.13)	0.38 (0.21 to 0.70)
Interstitial pulmonary fibrosis	0/8977 (0.00)	6/80800 (0.01)	-	-	-	-
Cardiovascular disease	20/8146 (0.25)	209/71774 (0.29)	-0.05 (-0.16 to 0.07)	0.84 (0.53 to 1.33)	-0.04 (-0.15 to 0.08)	0.87 (0.55 to 1.38)
Diabetes mellitus	NR	50/77928 (0.06)	NR	NR	NR	NR
Neurological disease	16/8028 (0.20)	189/69664 (0.27)	-0.07 (-0.18 to 0.03)	0.73 (0.44 to 1.22)	-0.05 (-0.16 to 0.05)	0.80 (0.48 to 1.33)
Neuropathies	5/8537 (0.06)	100/75365 (0.13)	-0.07 (-0.13 to -0.02)	0.44 (0.18 to 1.08)	-0.06 (-0.12 to -0.00)	0.49 (0.20 to 1.21)
Psychiatric illness	16/8586 (0.19)	244/74641 (0.33)	-0.14 (-0.24 to -0.04)	0.57 (0.34 to 0.94)	-0.10 (-0.20 to -0.00)	0.65 (0.39 to 1.07)
Depression	n < 5	61/79616 (0.08)	NR	NR	NR	NR
Anxiety disorders	7/8786 (0.08)	172/77654 (0.22)	-0.14 (-0.21 to -0.07)	0.36 (0.17 to 0.77)	-0.11 (-0.18 to -0.04)	0.42 (0.20 to 0.90)
<b>Persisting symptoms</b>						
Dyspnoea	54/8676 (0.62)	304/76728 (0.40)	0.23 (0.05 to 0.40)	1.57 (1.18 to 2.10)	0.25 (0.08 to 0.42)	1.66 (1.24 to 2.22)
Cough	10/8677 (0.12)	192/77596 (0.25)	-0.13 (-0.21 to -0.05)	0.47 (0.25 to 0.88)	-0.14 (-0.22 to -0.06)	0.46 (0.24 to 0.86)
Anosmia	n < 5	0/80865 (0.00)	NR	NR	NR	NR
Headache	17/8400 (0.20)	166/73799 (0.22)	-0.02 (-0.12 to 0.08)	0.90 (0.55 to 1.48)	-0.00 (-0.10 to 0.10)	0.99 (0.60 to 1.63)
Fatigue related disorders	8/8809 (0.09)	92/78543 (0.12)	-0.03 (-0.09 to 0.04)	0.78 (0.38 to 1.60)	-0.02 (-0.09 to 0.05)	0.83 (0.40 to 1.71)

Nonspecific pain	14/8438 (0.17)	162/74235 (0.22)	-0.05 (-0.15 to 0.04)	0.76 (0.44 to 1.31)	-0.02 (-0.11 to 0.07)	0.89 (0.51 to 1.55)
------------------	----------------	------------------	-----------------------	---------------------	-----------------------	---------------------

RD = Risk difference, RR = Risk ratio, CI = Confidence interval, PS = Propensity score, TIA = transitory ischaemic attack, PIMS = Diagnoses related to paediatric inflammatory multisystemic syndrome, n < 5 = counts less than 5 cannot be reported due to Danish legislation, NR = not reported due to Danish data protection laws

**Table S15. Rates of health care utilisation 14 to 2 weeks before and 2 to 14 weeks after a SARS-CoV-2 test.**

Rates are reported as the number of events per 1000 individuals during the baseline and follow up period.

Outcome	Baseline period			Follow up			PERR (95% CI)
	Non-hospitalised SARS-CoV-2, events (n/1000 individuals)	Test-negative, events (n/1000 individuals)	Rate ratio	Non-hospitalised SARS-CoV-2, events (n/1000 individuals)	Test-negative, events (n/1000 individuals)	Rate ratio	
GP	5772/8983 (643)	67519/80894 (835)	0.77	8339/8983 (928)	77819/80894 (962)	0.96	1.25 (1.21 to 1.30)
Outpatient	4295/8983 (478)	58763/80894 (726)	0.66	4991/8983 (556)	65068/80894 (804)	0.69	1.05 (0.99 to 1.11)
Emergency department	118/8983 (13)	1069/80894 (13)	0.99	203/8983 (23)	1526/80894 (19)	1.20	1.21 (0.93 to 1.56)
Hospitalisation	212/8983 (24)	3273/80894 (40)	0.58	319/8983 (36)	4300/80894 (53)	0.67	1.15 (0.95 to 1.38)

CI = Confidence interval