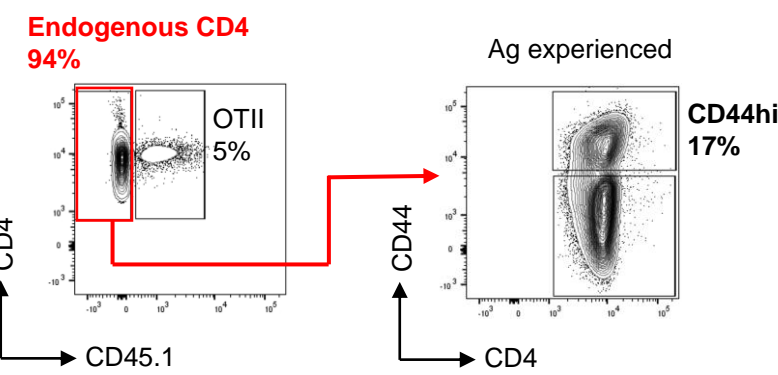
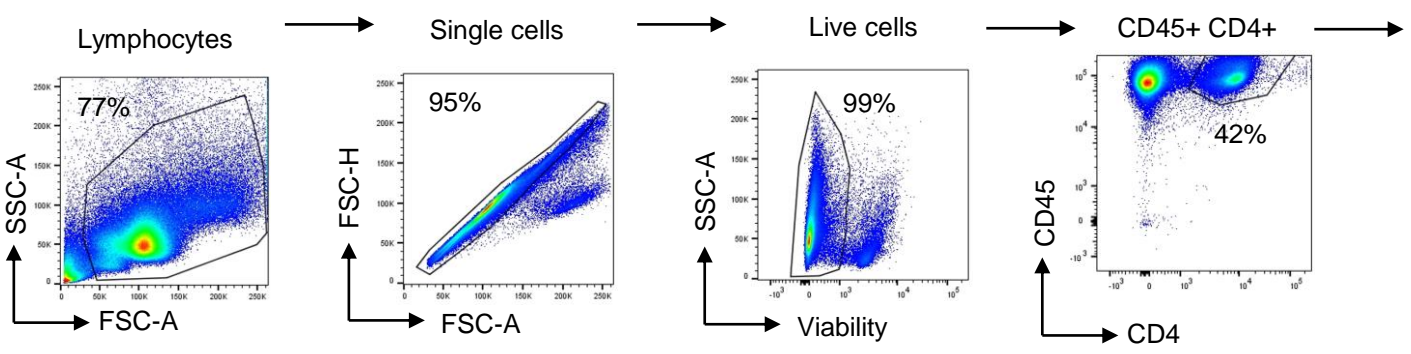
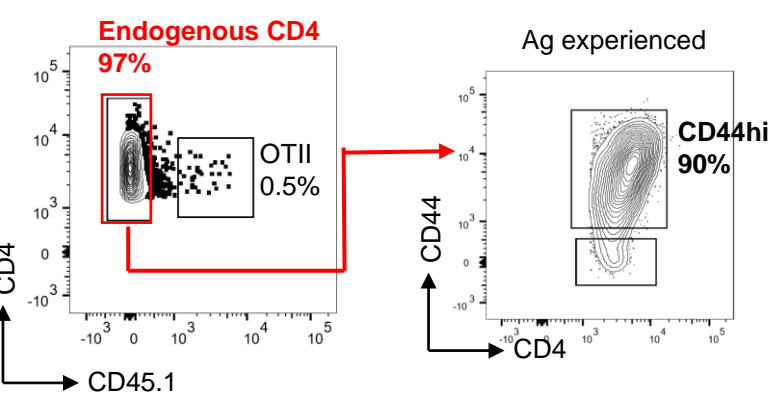
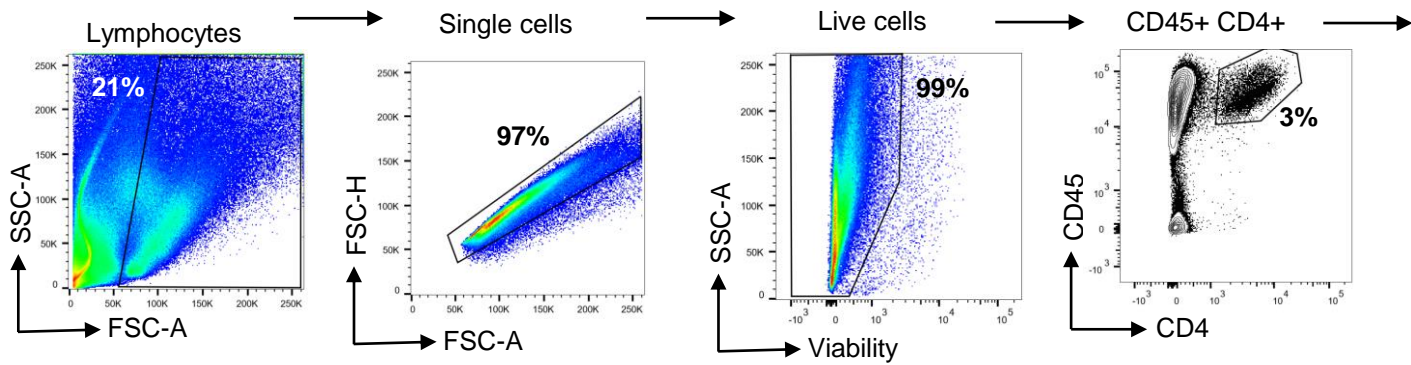


Sup fig 1

A) Early Inflamed pLN (HAO)

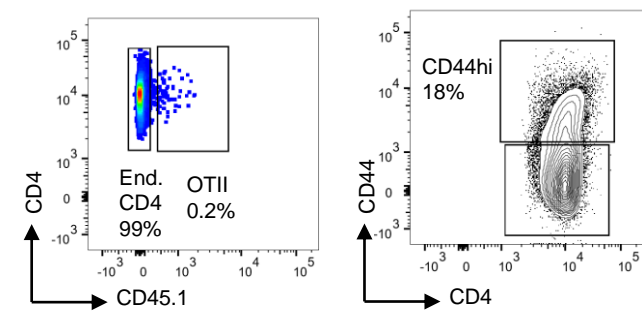


B) Early Inflamed Joint (HAO)

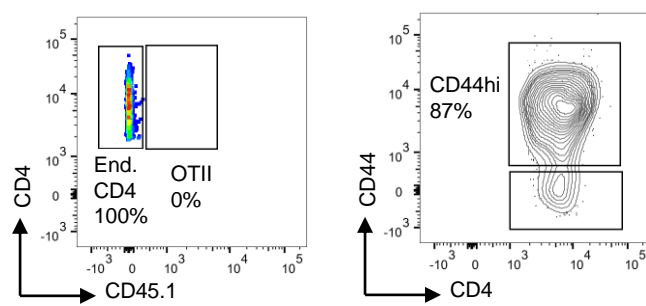


Sup fig 2

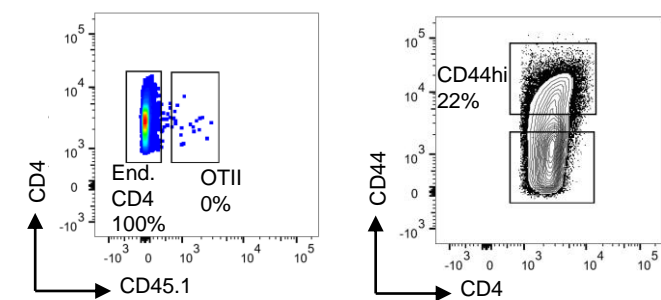
A) Early control pLN (PBS)



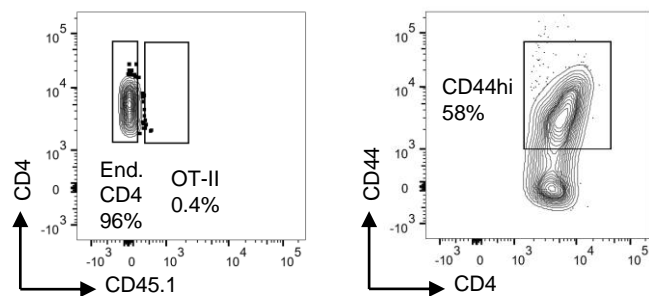
B) Early control joint (PBS)



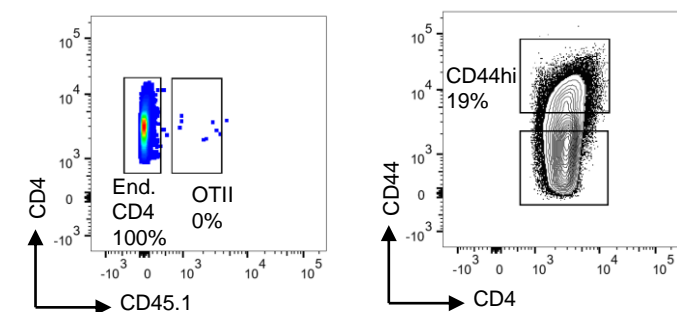
C) Late control pLN (IFA)



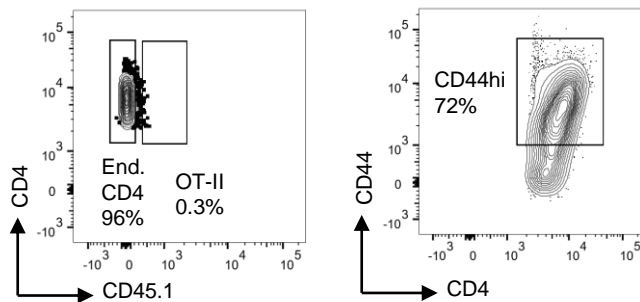
D) Late control joint (IFA)



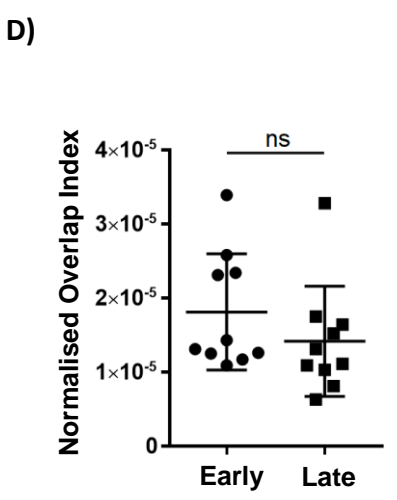
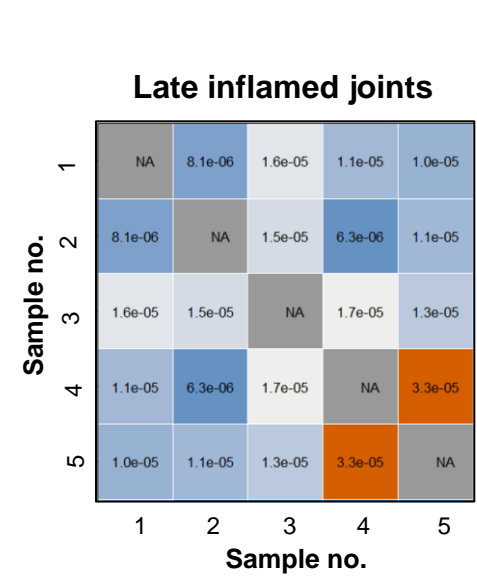
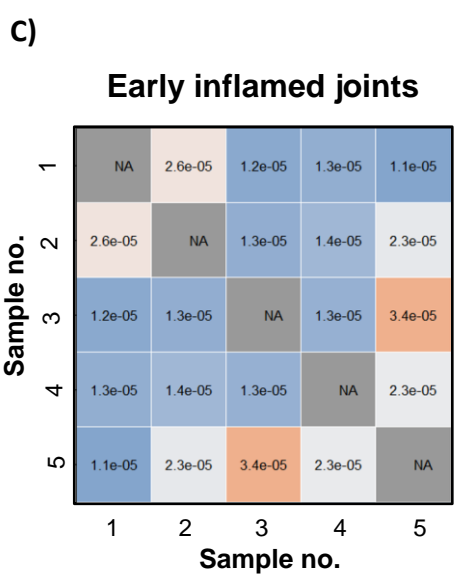
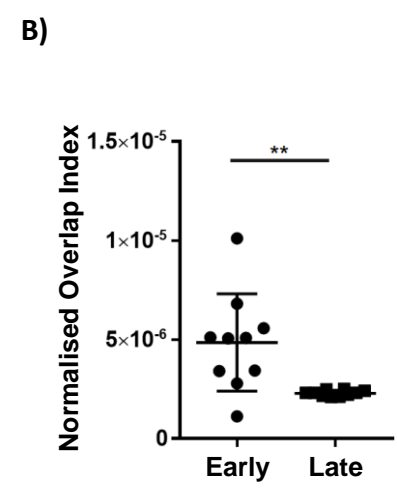
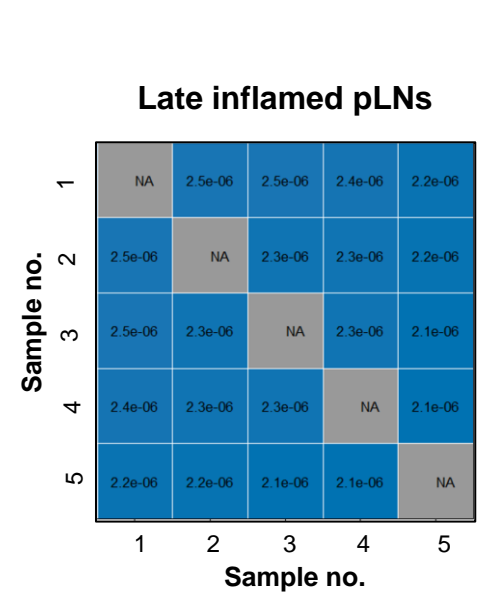
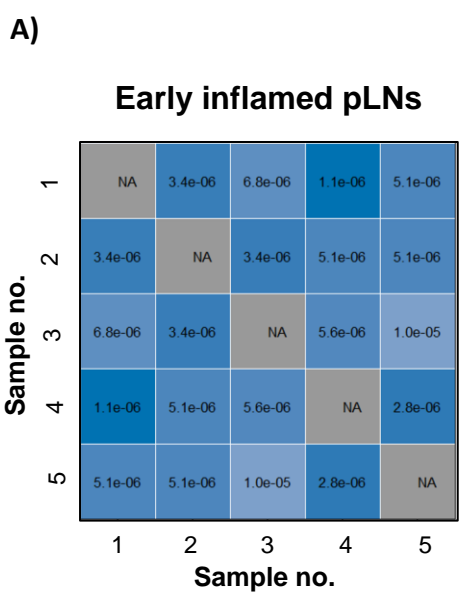
E) Late inflamed pLN (HAO+IFA)



F) Late inflamed joint (HAO+IFA)



Sup fig 3



Sup table 1

Sample	CDR3 β amino acid sequence	V-gene	Read count in pLN	Rank in pLN	Rank in joint
Top 10 early joint 1 in early pLN 1	CASSPGQGTGERLFF	TRBV26	4276	2	1
	CASSQTGGSYEQYF	TRBV2	275	95	7
	CASSNRDWGQDTQYF	TRBV16	267	98.5	3
	CASSFAGHYEQYF	TRBV3	94	196	5
Top 10 early joint 2 in early pLN 2	CASSLVGEDTQYF	TRBV16	1727	2	9
	CASSPQGNVYAEQFF	TRBV2	1705	3	4
	CASSPGGGNYAEQFF	TRBV2	1384	6	10
	CASSLVQNTGQLYF	TRBV16	1004	15	7
	CASSRTGGNSDYTF	TRBV2	628	39	1
	CASSLGAYAEQFF	TRBV3	616	40	8
	CASSKLGGLSYEQYF	TRBV19	340	98	3
Top 10 early joint 3 in early pLN 3	CASSPLGGRNTGQLYF	TRBV5	2307	2	1
	CASSLGGESQNTLYF	TRBV12-2	1250	11	8
	CASSNREGTQYF	TRBV16	753	36	3
	CGAGQGNTVEVFF	TRBV20	101	193	9
Top 10 early joint 4 in early pLN 4	CASSLGGESQNTLYF	TRBV12-2	14841	1	2
	CASSQGTGGQDTQYF	TRBV2	280	129	3
	CASSFGLEGQNTLYF	TRBV3	228	154	1
	CTCSARGSNTVEVFF	TRBV1	209	174	6
	CASSPGQGVNTEVFF	TRBV4	61	506	8
Top 10 early joint 5 in early pLN 5	CASSQAGGYAEQFF	TRBV2	631	45	1
	CASSQTGVNAEQFF	TRBV2	250	153.5	5
	CASSQNTGQLYF	TRBV16	198	198.5	3

Sup table 2

Sample	CDR3β amino acid sequence	V-gene	Read count in pLN	Rank in pLN	Rank in joint
Top 10 late joint 1 in late pLN 1	CASSLDLGGGRGEQYF	TRBV16	976	2	7
	CASSQTGGAREQYF	TRBV2	849	3	3
	CASSRQGNSDYTF	TRBV12-2	807	4	1
	CASSLSGLGGGAEQFF	TRBV26	764	5	2
	CASGGSGTGETLYF	TRBV13-2	456	7	4
	CASSQAQNTVEVFF	TRBV2	330	11	8
	CASSQTGANTEVFF	TRBV2	153	38	10
	CASSLSLGGLEQYF	TRBV26	142	47	5
	CASSSLRGSNQAPLF	TRBV16	95	98	6
Top 10 late joint 2 in late pLN 2	CASSFSGQTEVFF	TRBV14	530	1	1
	CASSWGQGRDQYF	TRBV16	267	6	3
	CASGDLDKYEQYF	TRBV13-2	167	18	2
	CTCSTHSDYTF	TRBV1	90	69.5	7
	CASSQNGALYEQYF	TRBV2	89	71.5	5
	CASSLQSSAETLYF	TRBV16	85	77.5	10
	CASQFRQDNIAEQFF	TRBV14	84	81	9
	CASSPPYINSDYTF	TRBV3	60	171	4
	CASSQAGGYAEQFF	TRBV2	52	226.5	6
CASSKGPYNSPLYF	TRBV19	26	950	8	
Top 10 late joint 3 in late pLN 3	CASSLETGGASEQYF	TRBV12-2	879	1	2
	CASRTASGNTLYF	TRBV19	798	2	4
	CARSTRAYNSPLYF	TRBV19	257	7	7
	CASSSNTGQLYF	TRBV16	217	12	1
	CTCSASGFSNERLFF	TRBV1	199	16	6
	CASSQTGGSYEQYF	TRBV2	164	25	5
	CASSQDSGGRAEQFF	TRBV2	158	31	8
	CASGRNYAEQFF	TRBV13-2	134	39	10
	CASSQDTGGLNTLYF	TRBV2	107	51.5	3
	CASSQPGTNQAPLF	TRBV2	52	197	9
Top 10 late joint 4 in late pLN 4	CASSKPGYAEQFF	TRBV19	435	3.5	1
	CASSQEAGRNTGQLYF	TRBV5	435	3.5	10
	CASSQTGAETLYF	TRBV5	260	14	4
	CASSRGPYNSPLYF	TRBV19	203	20	7
	CASSQAGGYAEQFF	TRBV2	170	26.5	2
	CASSSNTGQLYF	TRBV16	109	59.5	3
	CASSLAGGGYAEQFF	TRBV3	102	68	5
	CASSFGSSAETLYF	TRBV29	55	209.5	6
	CASSGQGWSTGQLYF	TRBV2	35	528	8
	CASSDRASSYEQYF	TRBV3	32	621.5	9
	CASSSNTGQLYF	TRBV16	6	8460	3
	CASSLAGGGYAEQFF	TRBV3	1	30109.5	5
Top 10 late joint 5 in late pLN 5	CASSLAWGGMAEQFF	TRBV16	515	3	4
	CASSHRLANSYTF	TRBV14	496	4	1
	CTCSRDRGSGNTLYF	TRBV1	255	13	3
	CASSNQDTQYF	TRBV16	217	19	7
	CASSPLGNIAEQFF	TRBV2	196	23	5
	CASSPPGQNQAPLF	TRBV2	76	95.5	6
	CASSQMTISNERLFF	TRBV2	76	95.5	10
	CASSLDGRSQNTLYF	TRBV16	34	377	8
	CASSQGGQDTQYF	TRBV2	34	377	9
	CASSQGGQDTQYF	TRBV2	5	10330	9
	CASSQGGQDTQYF	TRBV2	3	17765.5	9
	CASSQGGQDTQYF	TRBV2	1	39595	9