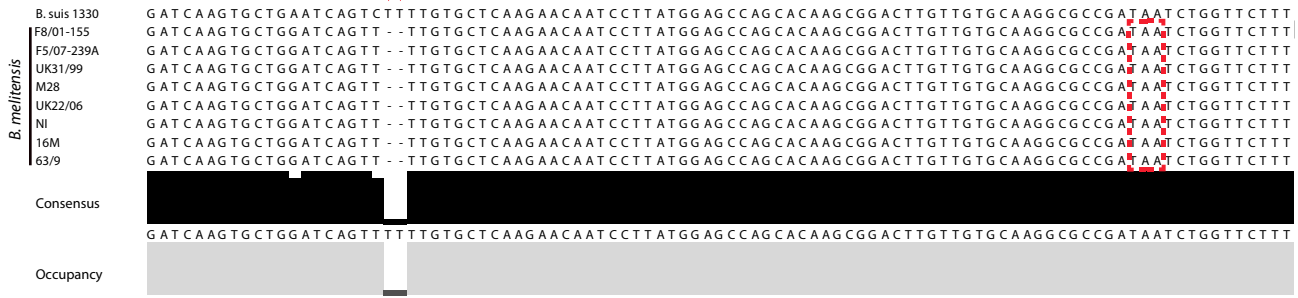


Figure S8

A.

*bmaA*



B.

*bmaB*



C.

*bmaC*



Supplementary figure 8:

Multiple alignments of conserved mutations of (A) *bmaA* orthologues of *B. melitensis*, (B) *bmaB* orthologues of *B. abortus* and (C) *bmaC* orthologues of *B. melitensis*. Conserved mutations are pointed by red arrows and non-sense mutations generated de novo are marked by dotted line squares.